

iPhone

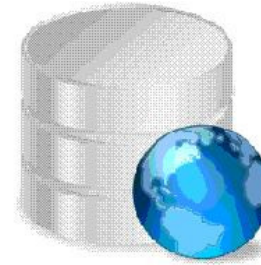
Trimble

Windows
Mobile

Nokia
(Symbian)

iPhone - Windows Mobile
Trimble - Nokia (symbian)

GIS4Mobile



GIS4Mobile

Forbind **mobile** devices **online**

Nikolaj Møller Nielsen nmn@gis4mobile.com

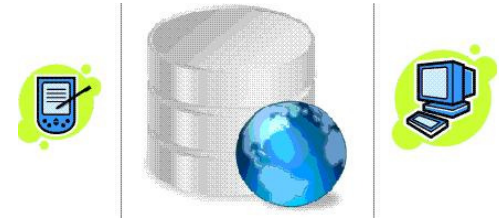
Ove Lindholt Hansen: olh@gis4mobile.com



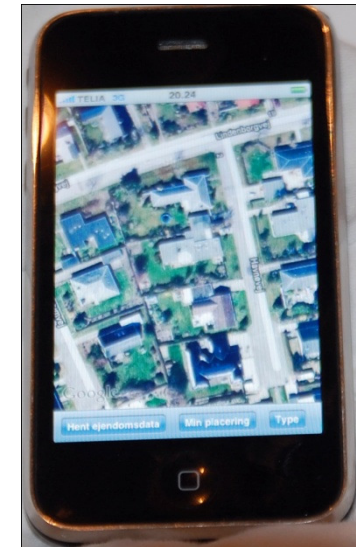
Kloi.dk

- 10 år GIS udvikling erfaring
- Arbejder med MS GML og mobil teknologi til GPS registrering.
- Arbejder på alle gis og cad platforme
- Egenudvikling kombineret med outsource afdeling i lavkost lande

GIS4Mobile overview



- Datafangst med **smartphone** og **GPS**
- Send data til mobile enhed
- Online med et baggrundskort
- Online registrering
- Synkroniseret med Microstation
- Caching når enhed er offline
- Position + attributer + image.
- Systemet består af 3 dele:
 - **Mobile (Mobil telefon, håndholdt GPS)**
 - **Server (webservice "GeoDropBox" med GML)**
 - **GIS: synkronisering mellem Microstation og mobil enhed**



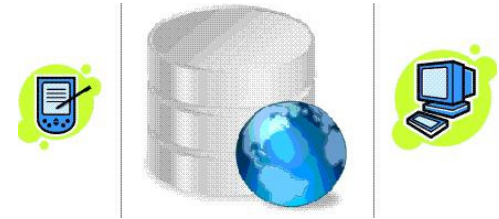
GIS4Mobile - mobile



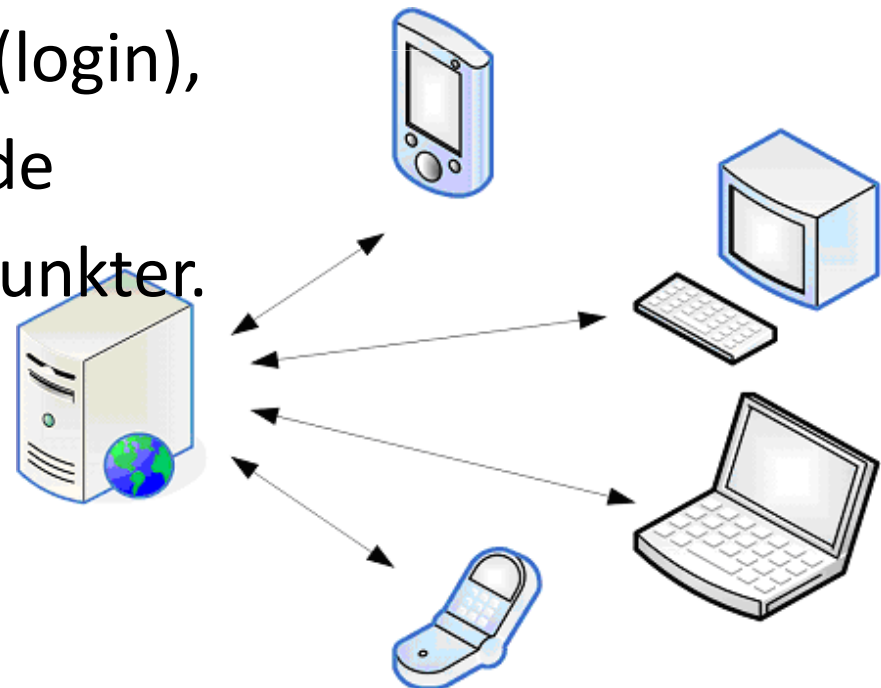
- Smartphones (GPS, kamera, skærm, network)
 - Nokia (J2ME), iPhone, HTC, Android coming soon
- GPS, windows mobile.
- Register med GPS
- Attributes, dropdown, checkbox
- Gem billede
- Baggrundskort til verifikation af punkt
- Online registrering send til GeoDropBox server.
- Display all points, symbology by attribute,
- Free to use, visit: **www.gis4mobile.com**



GIS4Mobile - server



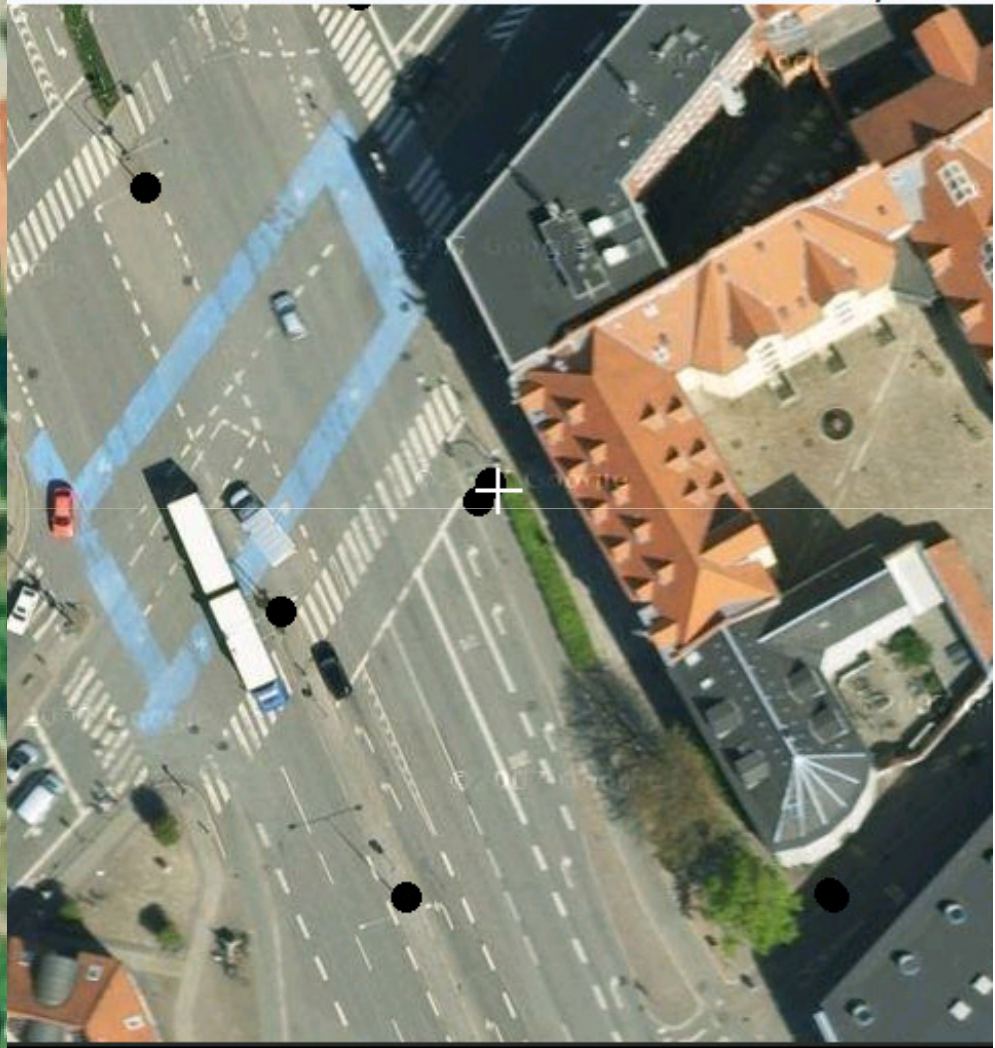
- “GeoDropBox”
 - Web server running spatial GIS database
 - WebServices til input / output,
 - Usernames / password (login),
 - Configure på hjemmeside
 - WebPage til at tjekket punkter.




GIS4Mobile - GIS



- MicroStation program “GeoSync”
 - Import fra GIS4Mobile spatial server
 - Export til GIS4Mobile spatial server
 - Synkronisering og deletes,
 - Bruger timestamps,
 - Bruger skygge filer lokalt til editstatus
 - Finder ændringer af elementer automatisk ved brug af checksum.



- Getlocation
- ejendomsms
- DataCapture
- Search
- FindRute
- Cancel

 **Settings**     ok

Login

Password

External GPS

COM Port

Baudrate



Save   **Cancel**

Afbryd

Registrer

Skilt

SkilteType

Parking



Skal fornyes

Notat

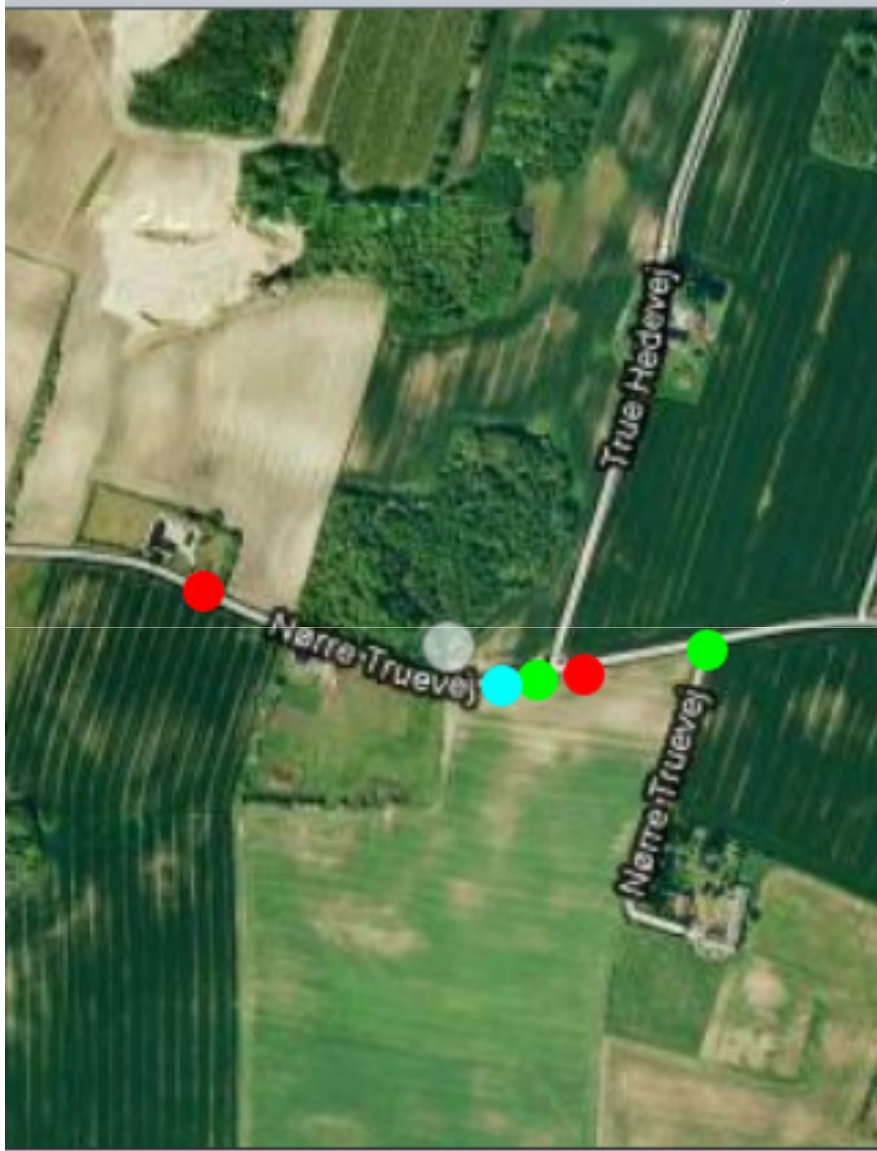
Tag billede

Gem and upload



Annuler



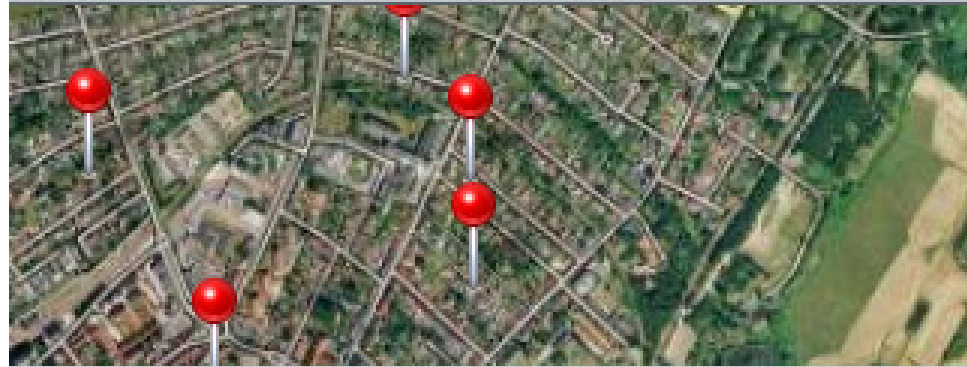


Tools

Map

Settings





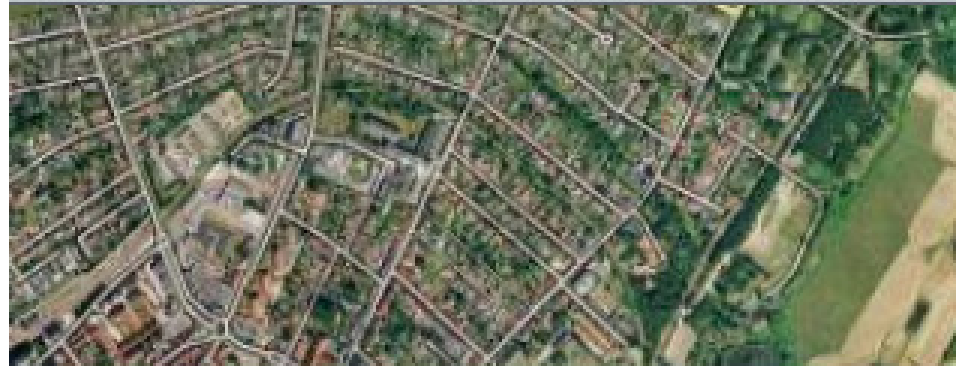
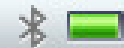
- Road_Signs** ✓
- Broend**
- HistPunkt**

- Normal**
- Satelite**
- Hybrid** ✓

TDC...

3G

9:45 PM



Road_Signs



Broend



HistPunkt



Normal

Satelite

Hybrid



Redskaber

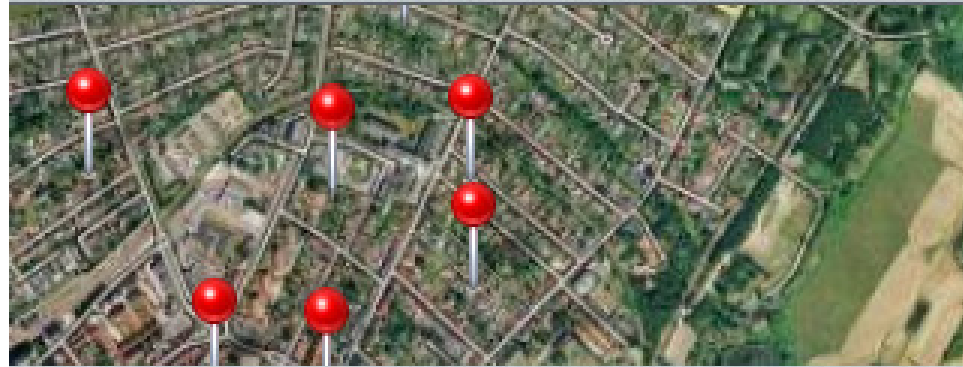
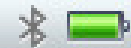
Kort

Settings

TDC...

3G

9:45 PM



Road_Signs



Broend



HistPunkt



Normal

Satelite

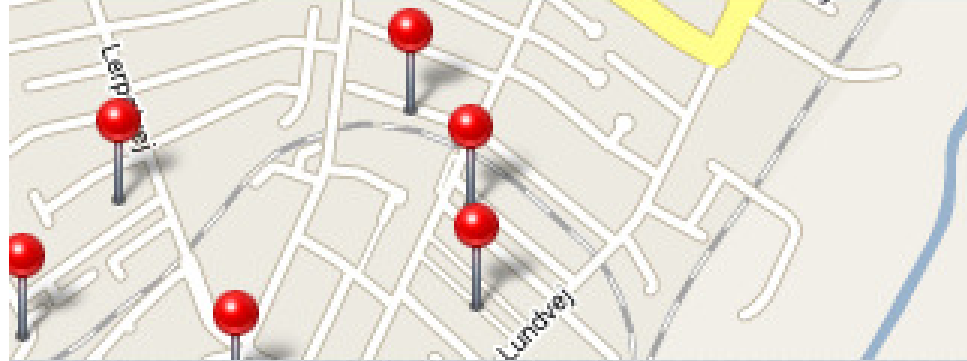
Hybrid



Redskaber

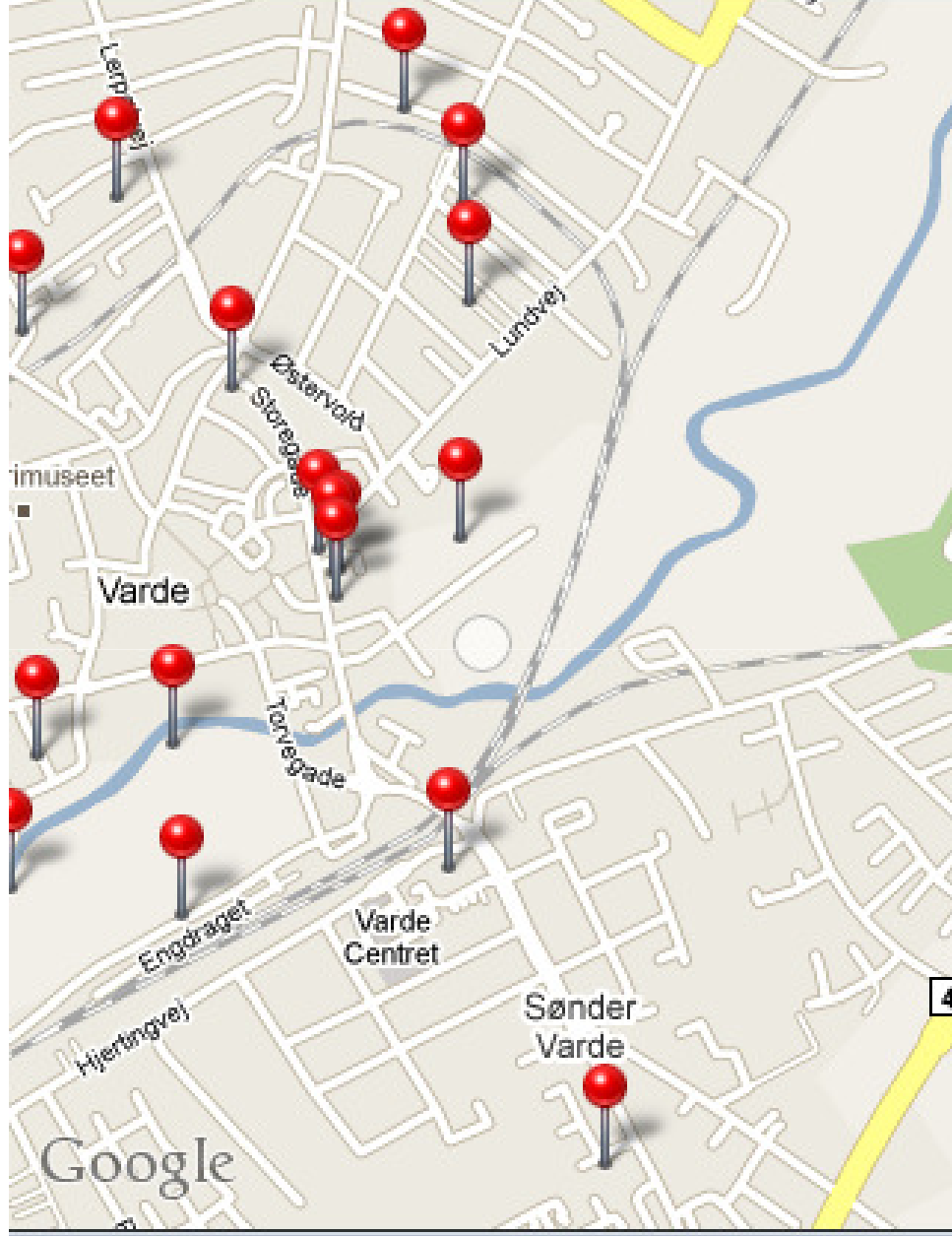
Kort

Settings



- Road_Signs** ✓
- Broend**
- HistPunkt**

- Normal** ✓
- Satelite**
- Hybrid**

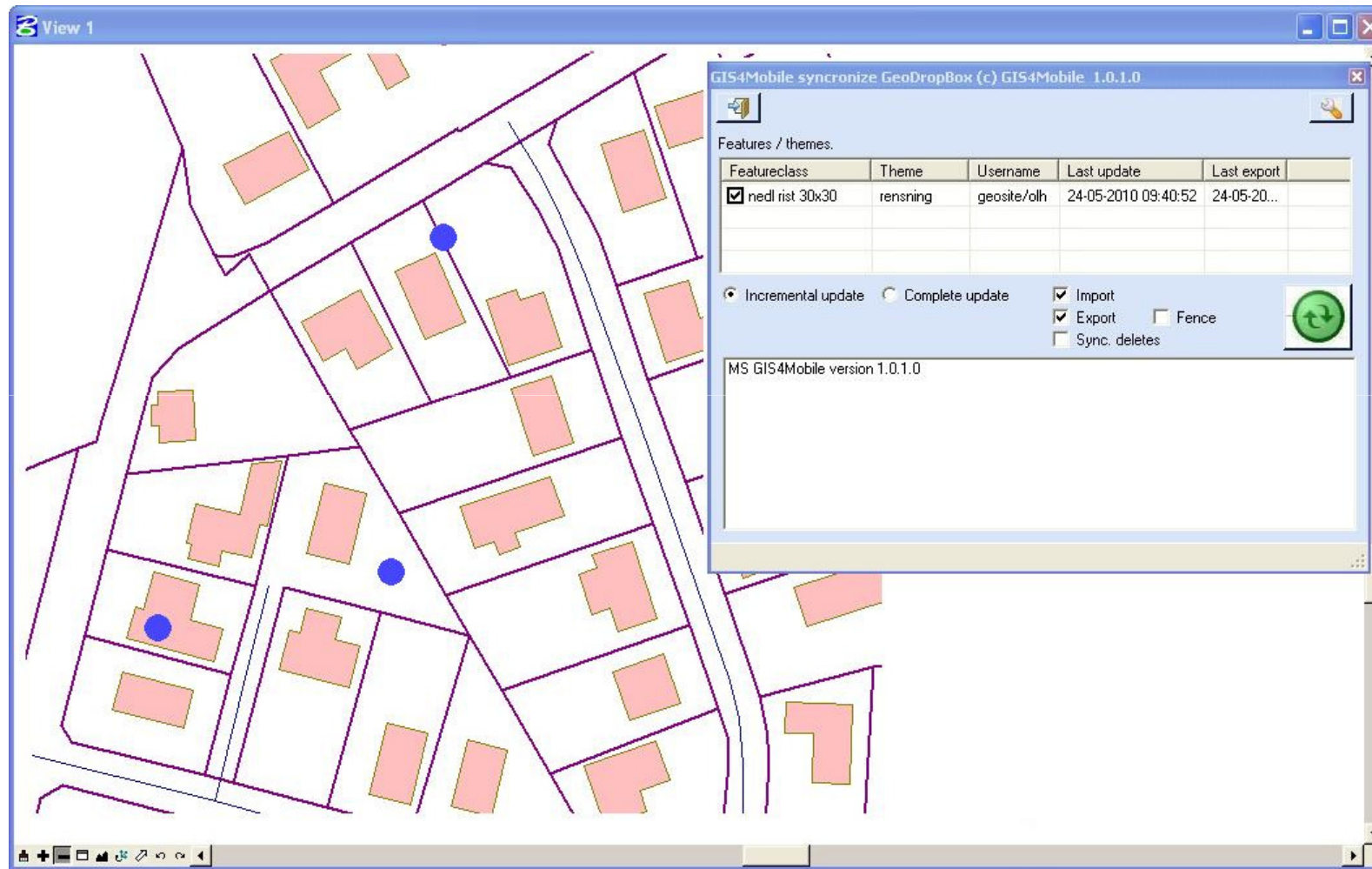


Redskaber

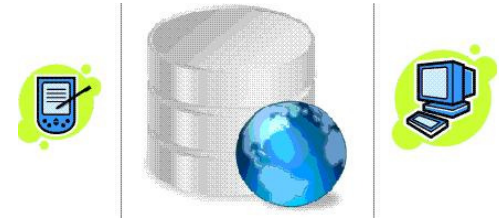
Kort

Settings

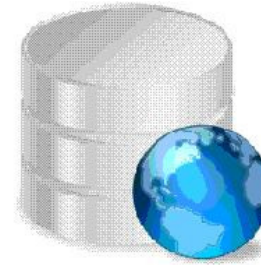
GIS4Mobile screenshot



GIS4Mobile demo



- Will run a live demo using HTC running windows mobile.
- Device has connection to GPS from outside expedition.



GIS4Mobile

Se film på www.gis4mobile.com

Nikolaj Møller Nielsen nmn@gis4mobile.com

Ove Lindholt Hansen: olh@gis4mobile.com