



ProjectWise InterPlot and Dynamic Plot V8i Update

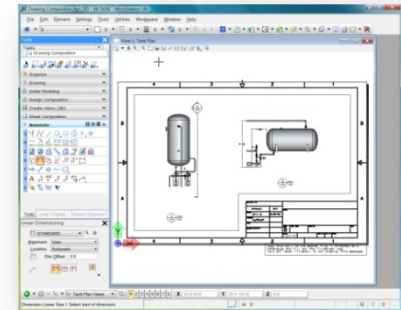
Jo Terri Wright
Product Manager – Collaboration Products

Agenda

- Publishing Priorities
- ProjectWise InterPlot V8i
- ProjectWise Dynamic Plot V8i

Publishing Priorities

- **Right Information**
 - Extract the appropriate content
 - Layout according to predefined rules
 - Present according to project standards
- **Right People**
 - Architects/Engineers, Sub-contractors
 - Project Managers/Coordinators
 - Construction, Maintenance
- **Right Time**
 - Conceptualization, Design, Implementation
 - Construction, Own/Operate
 - Deliverable produced and reproduced on demand



Publishing Solution

ProjectWise InterPlot

A single publishing solution that addresses the needs of distributed project teams to produce standard product deliverables through all phases of the project lifecycle



ProjectWise InterPlot V8i Feature Map



Why Application Integration?

- Single publishing solution that integrates with frequently used applications
- Leveraging investment in existing standards and data
- Reliably produce project deliverables from the point of need

Application Integration

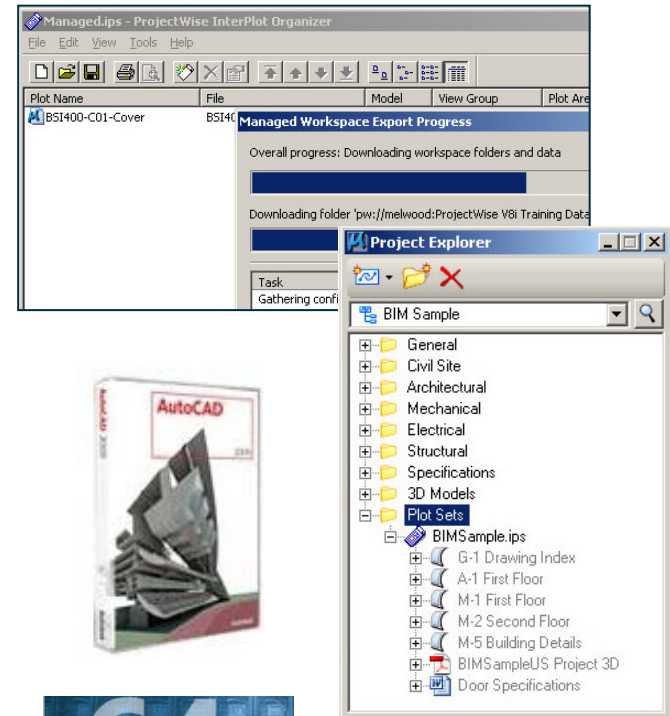
ProjectWise Managed
Print Resources

MicroStation Project Explorer

AutoCAD 2009/2010 (SS2)

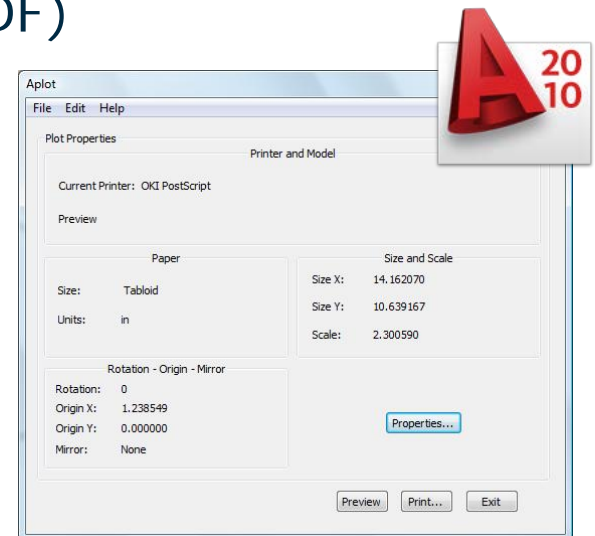
Windows 64-bit

Windows 7 & Server 2008 R2



AutoCAD 2010 Support

- Feature:
 - Plot AutoCAD 2010 files
 - APLOT dialog support for AutoCAD 2010
- Advantage:
 - One solution that handles multiple input formats and versions (e.g. DGN, DWG, Raster, PDF)
- Benefit:
 - Use one tool for all output format needs reduces training, application and maintenance costs



ProjectWise InterPlot V8i Feature Map

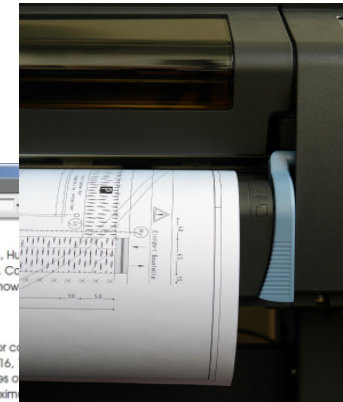
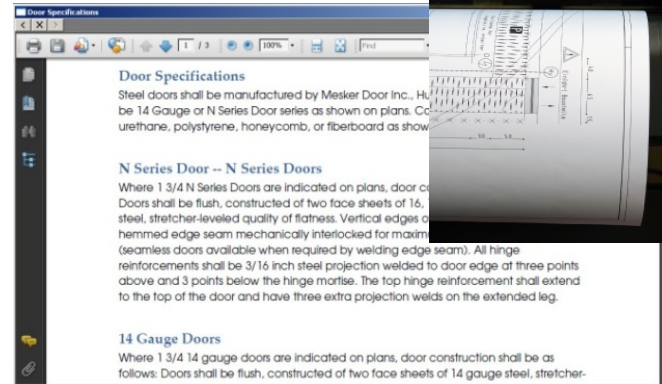


Why Format Support?

- Single publishing solution that handles all the formats important to your project deliverables
- Stay current with the most recent versions
- Consistent handling of both input and output formats

Format Support

PDF and Microsoft Office Input Support

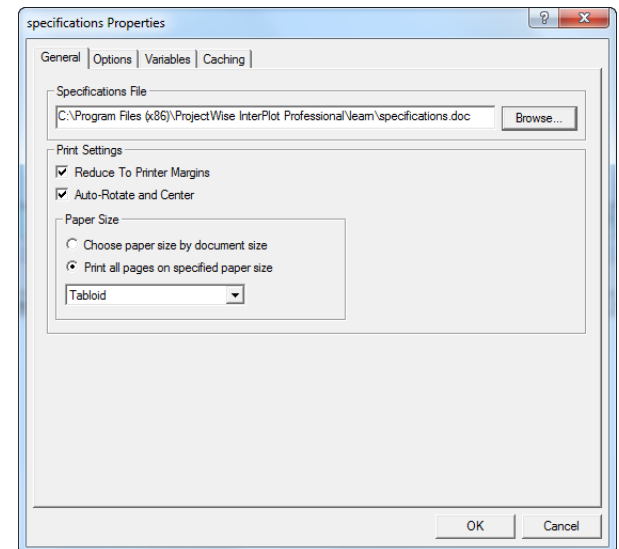


Print the Plans plus Specifications to paper or PDF



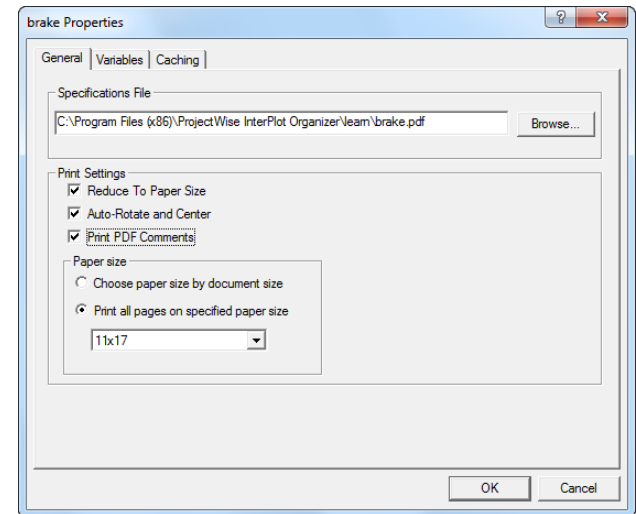
Office and PDF Printing Paper Size Control

- Feature:
 - Define the paper size when printing PDF and Office documents
- Advantage:
 - Provide better control over print behavior of PDF and Office documents with existing comments
- Benefit:
 - Saves time creating the desired paper sizes and reduces cost of wasted plots

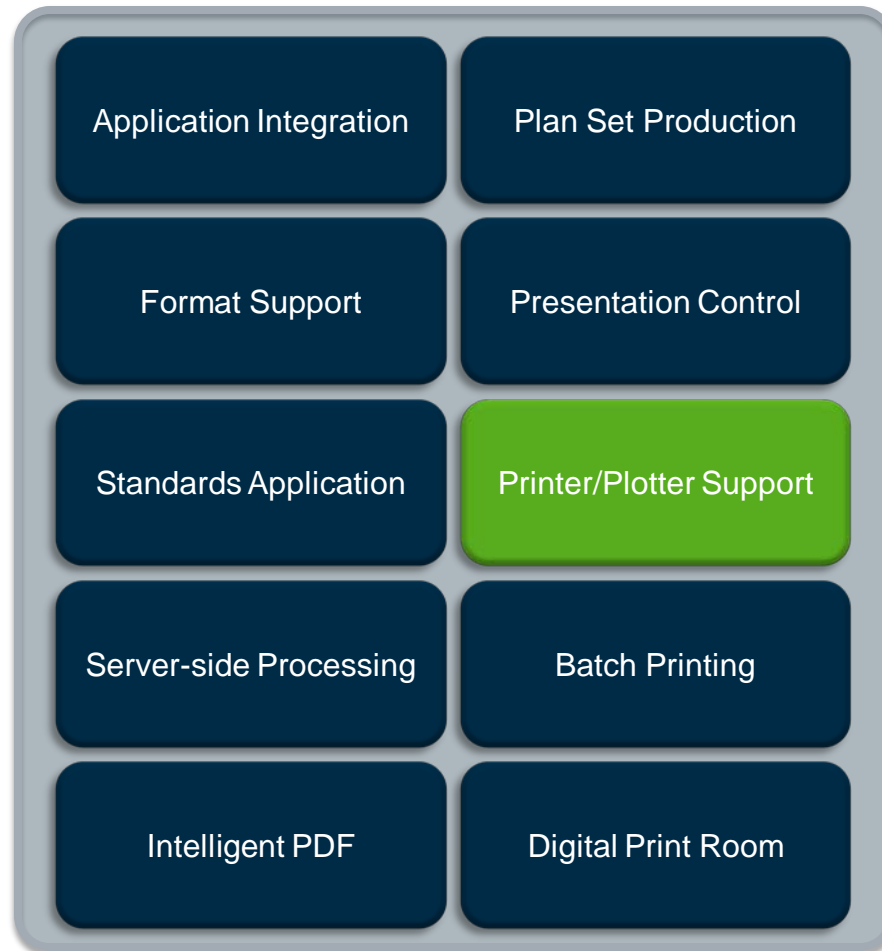


PDF Comment Printing

- Feature:
 - Control whether PDF comments are to be printed
- Advantage:
 - Print existing comments so that others can view them during project reviews
- Benefit:
 - Improve the quality of reviews of PDF documents with existing comments



ProjectWise InterPlot V8i Feature Map



Why Printer/Plotter Support?

- Utilize current printer/plotters on market
- Take advantage of their output features
- Provide consistent output across different makes/models printer
- Robust handling of complex drawings

Printer / Plotter Support

- ProjectWise InterPlot Driver Pack
 - HP DesignJet T1120
 - HP DesignJet 4X20 (4020/4520)
 - HP T1200 (SS2)
 - HP T770 (SS2)
 - Océ TCS 300
 - Océ TDS 320
- ProjectWise InterPlot Mid-Volume Driver Pack
 - Xerox 6030/6050
 - Océ ColorWave 600 (SS2)



ProjectWise InterPlot V8i Feature Map

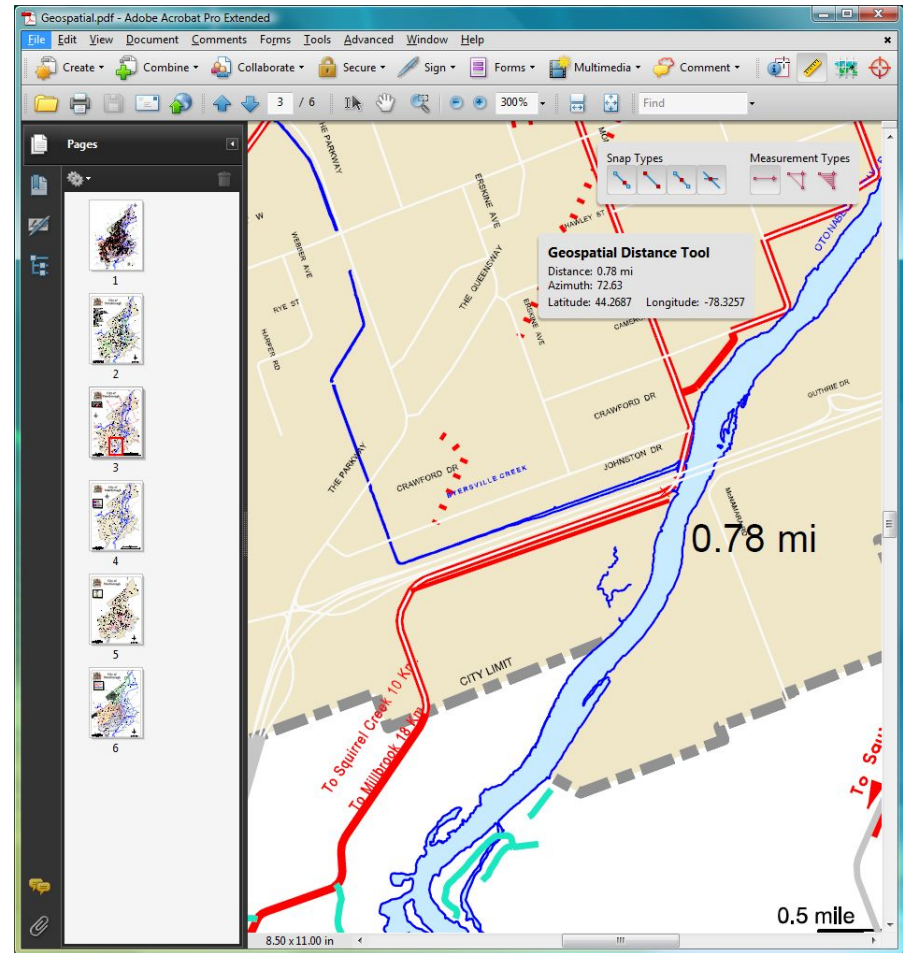


Why Intelligent PDF?

- Ubiquitous format that is the common currency for project information
- Reliable, high-fidelity, and capable of containing more information than just graphics
- Rich container for navigation, security, multi-media and metadata
- Easy-to-use, pervasive applications

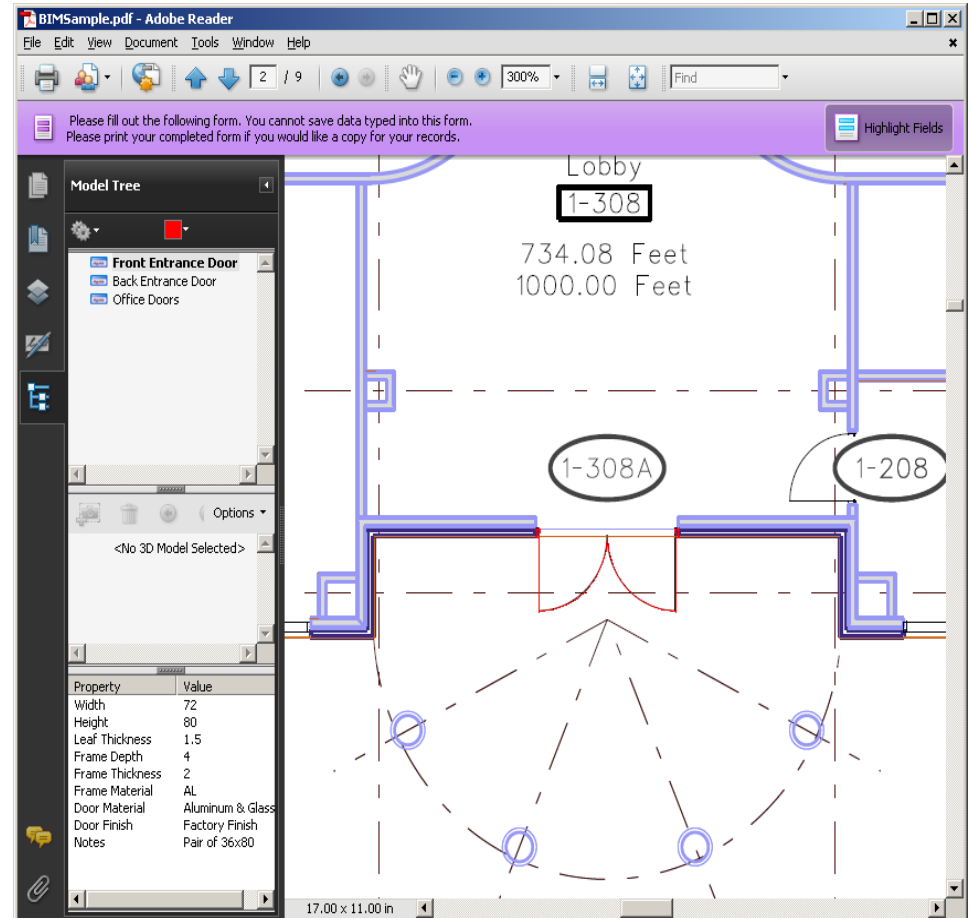
Intelligent PDF: Geo-registered

- Multiple areas per sheet and set
- View coordinates in appropriate projection
- Measure in real world units
- Comment and place markers for follow-up
- Just “print” to PDF



Intelligent PDF: 2D Properties

- Publish design properties directly into 2D PDF drawings
- View, search, & navigate using just Adobe Reader
- Just “print” to PDF



ProjectWise Dynamic Plot

Review/Markup solution that uses plain paper and a digital pen to dramatically streamline the process for updating original design files from office or field worker comments



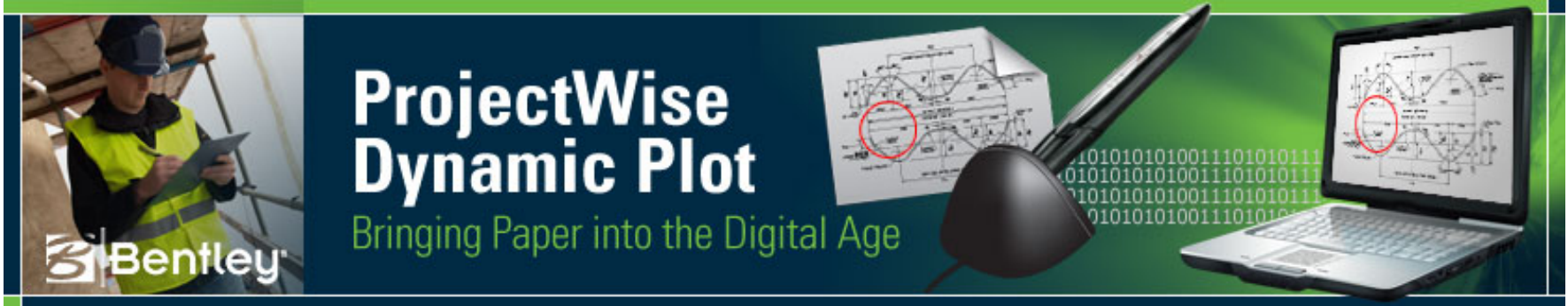
Print



Mark-up



Share



- ✓ Eliminate risk of losing markups during manual transfers
- ✓ Establish markup audit trail for regulatory compliance
- ✓ Dramatically reduce time taken to sync plots and models
- ✓ Increase project quality, improve safety, reduce risk

ProjectWise Dynamic Plot solution Practitioners and Uses

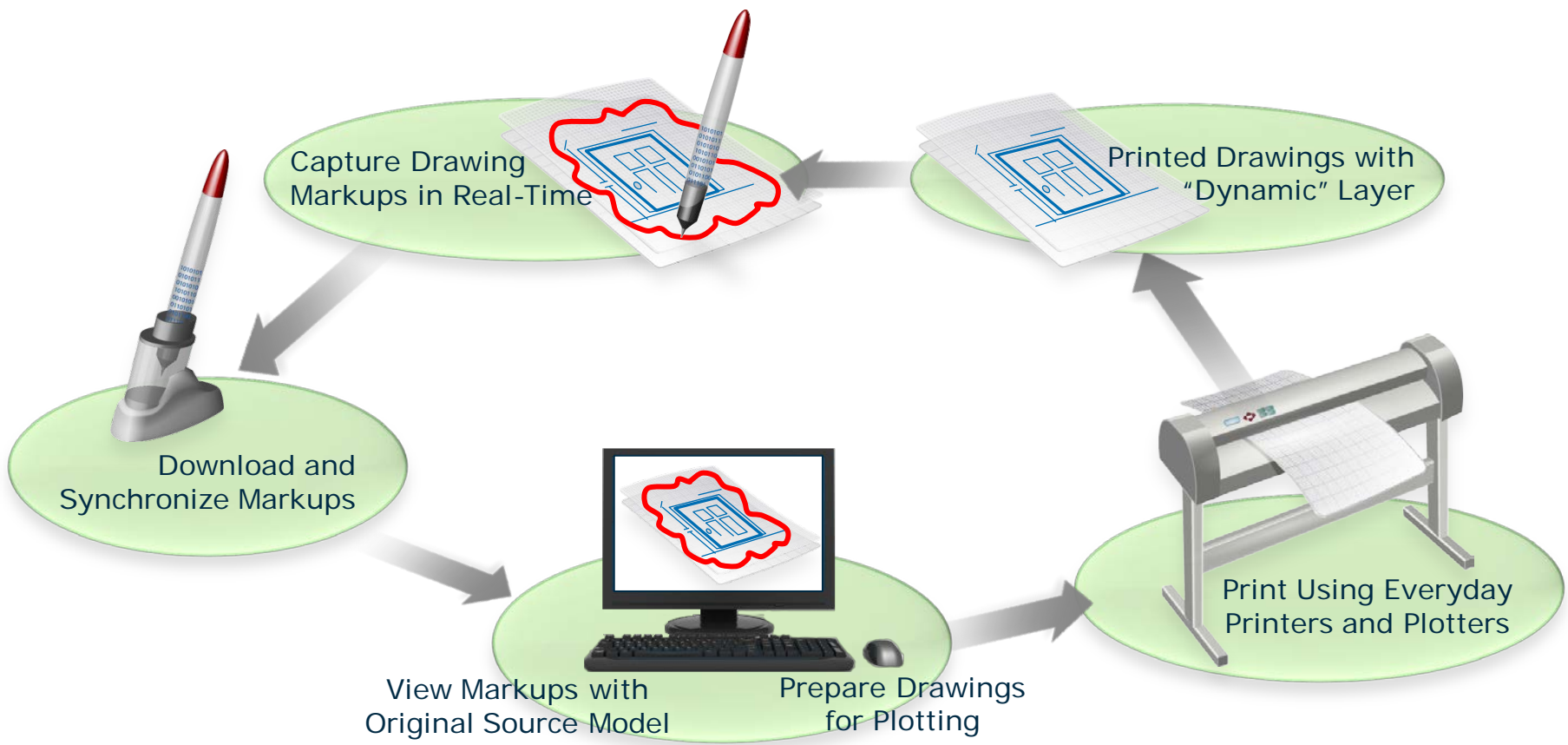
- **Who will use this solution?**
 - Architects
 - Engineers
 - Contractors
 - Field Personnel

- **How will this solution be used?**
 - Design Review
 - As-Built Markups
 - P&ID Walk-downs
 - Inspection
 - Survey
 - A/E Field Notes



ProjectWise Dynamic Plot

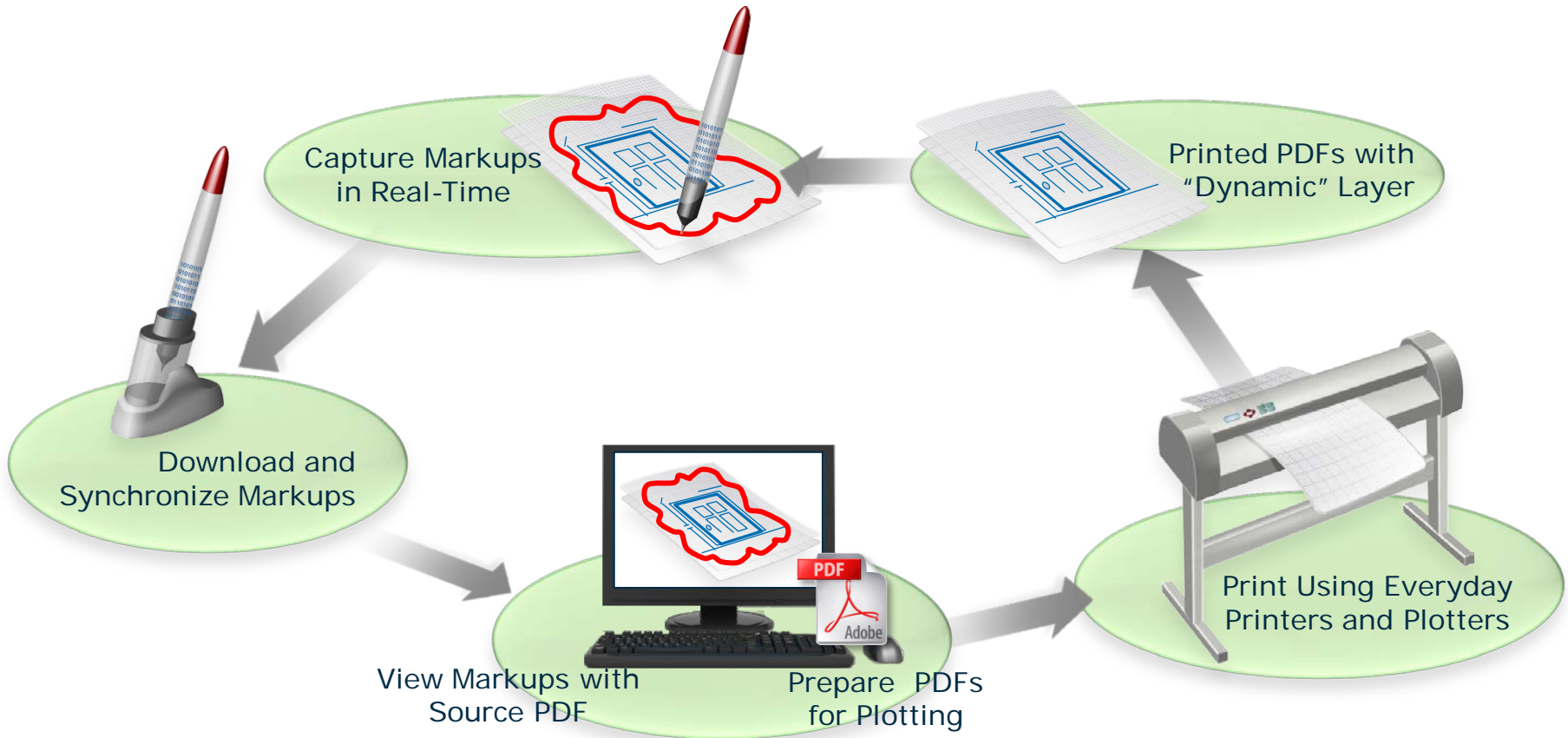
Bringing Paper into the Digital Age





ProjectWise Dynamic Plot

Bringing Paper into the Digital Age

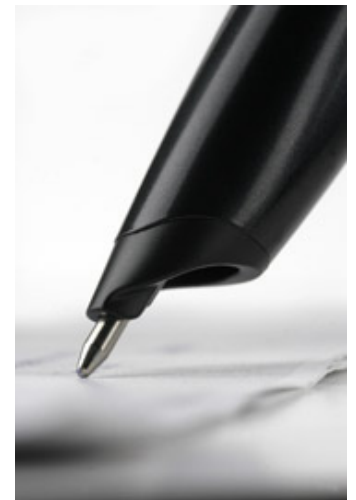


ProjectWise Dynamic Plot Features

- Pen and paper workflow
- Supports everyday printers
- Uses plain paper
- Use of small and large format output
- Creation of dynamic plots from Designs & PDFs
- Printing dynamic plots to PDF
- Provenance
- Digital ink control
- Remote markup synchronization
- Configurable markup folder
- Thin client administration
- Audit trail

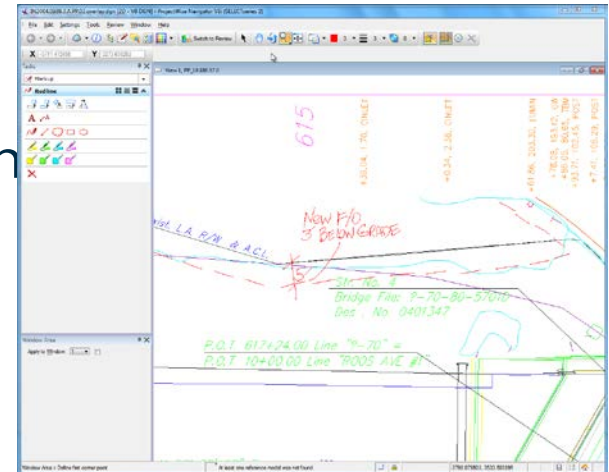
Pen and Paper Workflow

- Feature:
 - Convenient method to create and collect markups that is portable, reliable, and easily usable by reviewers
- Advantage:
 - Does not require bulky, expensive equipment, like a laptop, that is not appropriate for the rigors of field use
- Benefit:
 - Speeds the time required and reduces errors collecting markups, and improves the quality of the markup review workflow



Provenance

- Feature:
 - Reliable and fast method of associating markups with the original design data
- Advantage:
 - Offers a “live connection” to the digital source so that comments applied to the paper are tied to the digital files
- Benefit:
 - Markup review quality is improved and risks of errors are reduced because markups are always associated with the original design content



Supports Everyday Postscript Printers

- Feature:
 - Use color printers for all output types or black and white printers for typical engineering drawings
- Advantage:
 - Use existing devices and consumables for producing dynamic plots
- Benefit:
 - Save money on printer costs



Uses Regular Paper

- Feature:
 - Use the same regular printer paper to produce dynamic plots as you use for everyday project plots
- Advantage:
 - Use regular printer paper
- Benefit:
 - Save time and money not having to manage or maintain special paper



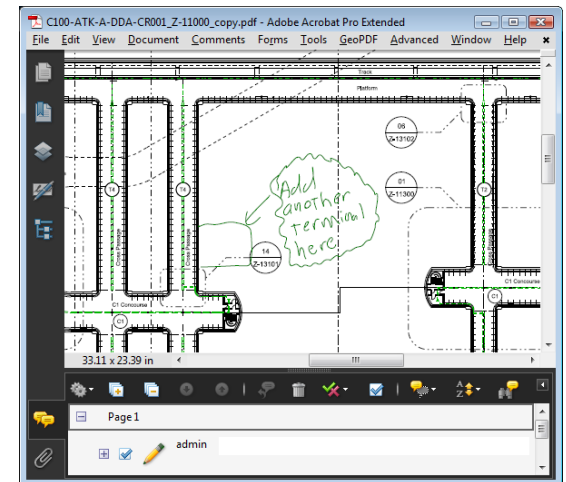
Use of Small and Large Format Output

- Feature:
 - Print on a variety of form sizes up to A0
- Advantage:
 - Choose the form that best fits your needs
- Benefit:
 - Continue using the same paper size for reviews



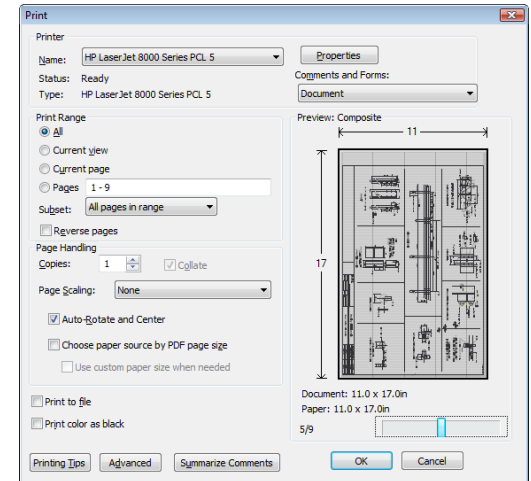
Creation of Dynamic Plots from Designs & PDFs

- Feature:
 - Create dynamic plots both from DGNs and DWGs as well as PDFs
 - Synchronize the markups automatically with the originals
- Advantage:
 - Dynamic Plots and their associated markups can be created from and automatically synchronized with virtually any project file
- Benefit:
 - Improve the quality of design reviews by using dynamic plots created from virtually any project information



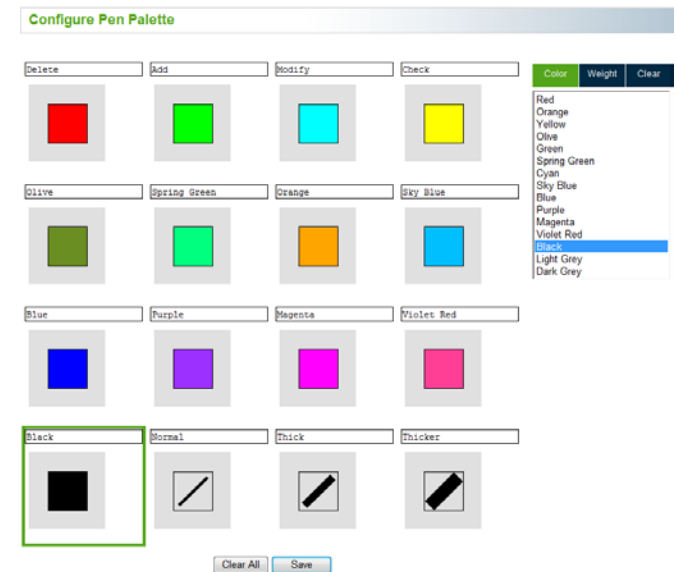
Printing Dynamic Plots to PDF

- Feature:
 - Allow users to publish and distribute dynamic plots to remote users via PDF
- Advantage:
 - Print dynamic plots to PDF just as you do to paper for on-demand printing at remote and contractor offices
- Benefits:
 - Reduce the time required for remote users to start marking up the drawings for faster turnaround
 - Reduce shipping and hardware costs



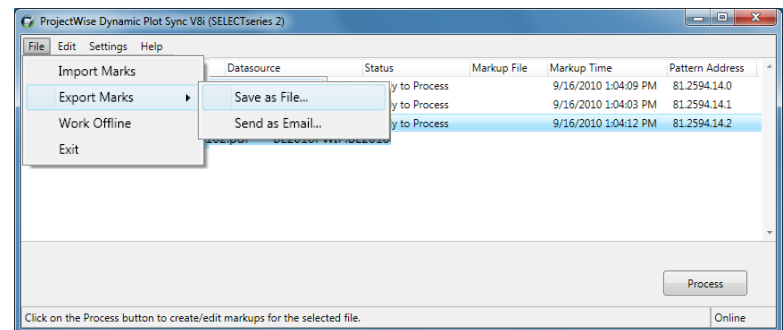
Digital Ink Control

- Feature:
 - A pen palette enables digital markups to show up in multiple colors and line weights
- Advantage:
 - Markups can be differentiated based on type, reviewer or discipline
- Benefit:
 - Improve the quality of design review and reduce errors by choosing colors for markups that fit your business process



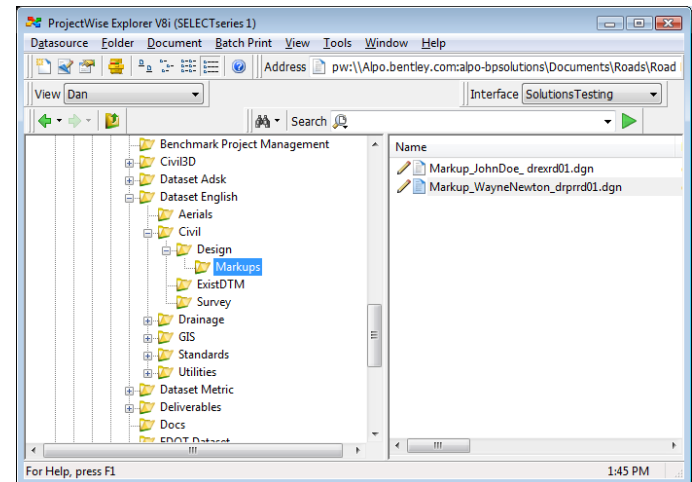
Remote Markup Synchronization

- Feature:
 - Sync markups from disconnected users who either have no ProjectWise connectivity to the project data or don't have an internet connection
- Advantage:
 - Markups can be saved to file in order to be emailed or sent via FTP once there is a connection to the internet
- Benefit:
 - Offers an alternative for offloading markups when there is no project access or network connectivity



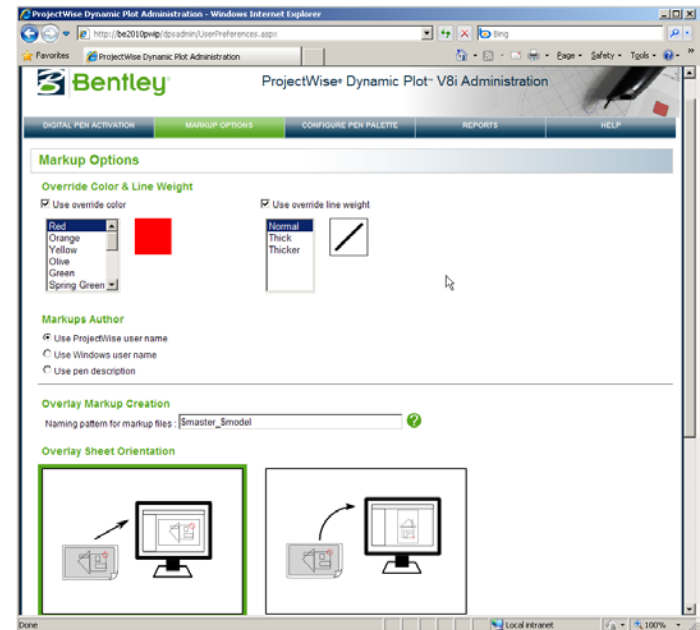
Configurable Markup Folder

- Feature:
 - Customize where overlay and PDF markups are stored in ProjectWise
- Advantage:
 - Save overlay and PDF markups in specified folders that do not include the originating documents
- Benefit:
 - Save time by easily locating markups no matter where the source documents are located
 - Protect your design data by ensuring that reviewers only have access to the markups



Thin-client Administration

- Feature:
 - Administrator interface that can be conveniently accessed remotely for configuration and troubleshooting
- Advantage:
 - Administer ProjectWise Dynamic Plot anywhere, anytime
- Benefit:
 - Spend less time administering the solution and more time on high-value activities



Audit Trail

- Feature:
 - Track who applied markups and where those markups are located
- Advantage:
 - Quickly find out who made what markups when
- Benefit:
 - Avoid legal and financial risks by locating and verifying drawing markups

The screenshot displays the Bentley ProjectWise Dynamic Plot Administration interface. The main window shows a 'Dynamic Plot Report' with a table of dynamic plots. Below this, a 'Markups' window is open, showing a table of markups and a detailed view of a specific markup.

Pattern Address	ProjectWise Document Modeler	Model	Server	Plotter	Creation Date
81.2594.14.0	pw:\BE2010P\WP-BE2010P\15Disc_chnicalSpace.Traininga1.dgn	ANSI D	BE2010P\WP	OKC9900	9/13/2010 2:27:42 PM
81.2594.14.1	pw:\BE2010P\WP-BE2010P\15Disc_chnicalSpace.Traininga2.dgn	ANSI D	BE2010P\WP	OKC9900	9/13/2010 2:28:02 PM
81.2594.14.2	pw:\BE2010P\WP-BE2010P\15Disc_00-atk-5000-c8921_2-13102.pdf		BE2010P\WP	OKC9900	9/13/2010 2:28:14 PM
81.2594.14.3	pw:\BE2010P\WP-BE2010P\15Disc_00-atk-5000-c8931_2-13102.pdf		BE2010P\WP	OKC9900	9/13/2010 2:33:06 PM
81.2594.14.4	pw:\BE2010P\WP-BE2010P\15Disc_chnicalSpace.Traininga1.dgn	ANSI D	BE2010P\WP	OKC9900	9/13/2010 2:53:11 PM
81.2594.14.5	pw:\BE2010P\WP-BE2010P\15Disc_chnicalSpace.Traininga2.dgn	ANSI D	BE2010P\WP	OKC9900	9/13/2010 2:53:14 PM

Name	Description	Review Model	Created By	Date Created	Priority	Status	Assigned To
PP_81.2594.14.33	Dynamic Plot Overlay	PP	Administrator	11/3/2010 4:51:50 PM	Normal	Deferred	ron.gant

Action Name	Date/Time	User Name	Additional Data
Created	11/3/2010 4:51:58 PM	Jo.Wright	In folder 'Plan and Profile'
Checked in	11/3/2010 4:51:59 PM	Jo.Wright	File not changed
Checked out	11/3/2010 4:53:26 PM	John.Simmons	
Checked in	11/3/2010 4:56:59 PM	John.Simmons	Update Server Copy
Checked in	11/3/2010 4:57:09 PM	John.Simmons	

ProjectWise Dynamic Plot Features

- Pen and paper workflow
- Supports everyday printers
- Uses plain paper
- Use of small and large format output
- Creation of dynamic plots from Designs & PDFs
- Printing dynamic plots to PDF
- Provenance
- Digital ink control
- Remote markup synchronization
- Configurable markup folder
- Thin client administration
- Audit trail

Summary

- Publishing Priorities
- ProjectWise InterPlot V8i
- ProjectWise Dynamic Plot V8i



ProjectWise InterPlot and Dynamic Plot V8i Update

Jo Terri Wright
Product Manager – Collaboration Products