

OpenPlant PowerPID V8i

Magnus Cullberg and Ari Rantasalo

Introducing OpenPlant PowerPID V8i

Agenda

- Introduction
 - A brief introduction to the versions of OpenPlant PID V8i
- OpenPlant PowerPID demo
- OpenPlant PowerPID Hands on
- Summary

Focus on OpenPlant PowerPID V8i

OpenPlant PowerPID V8i is our newest P&ID application.

- OpenPlant PowerPID V8i
 - Released December 2008
- OpenPlant PowerPID V8i plus DataManager
 - With option to connect to a Project database – Released in December 2009
- OpenPlant PowerPID V8i SELECTSeries 3
- OpenPlant PowerPID V8i plus OpenPlant Model Server
 - An enterprise application with connection to ProjectWise and other OpenPlant Applications – Due for release in 2011.

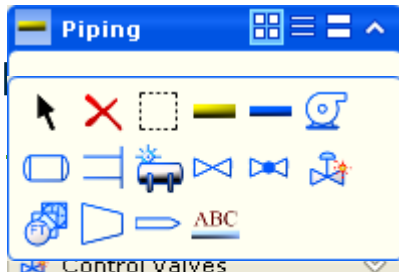
Focus on OpenPlant PowerPID V8i

Key Innovations

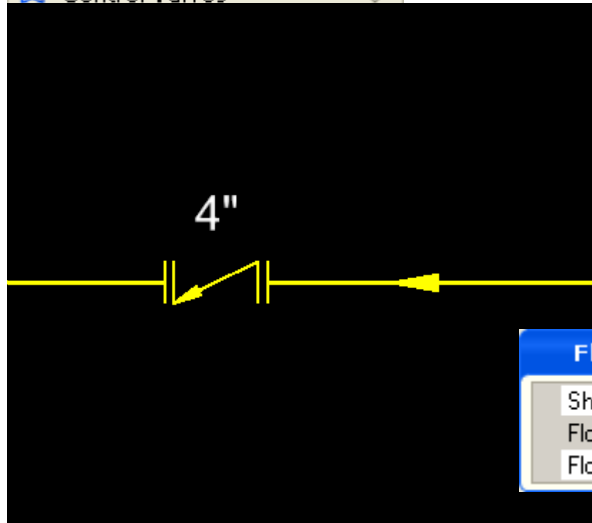
- Native use of ISO15926 Data Model
 - OpenPlant PowerPID V8i uses the ISO15926 class definitions as its base schema
- Support for both DGN and DWG
 - Native use of DGN or DWG formats – The drawing intelligence is persisted in the ISO15926 class structure regardless of format.
 - Your users can work in a single P&ID application and overall training costs go down.

Drafting

- Easy to use task-focused interface
 - Task-based
 - Favorites

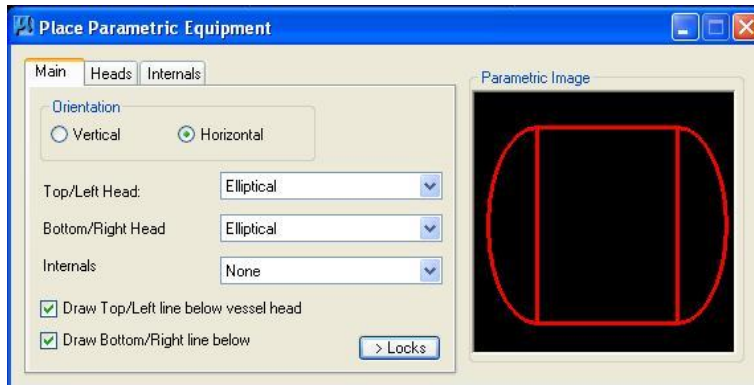


Drafting

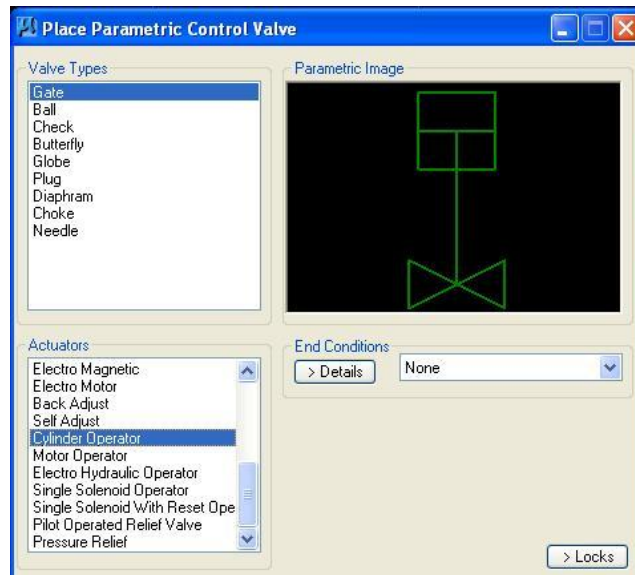


Flow Arrows	
Show Flow A	False
Flow	Backward
Flow Arrow L	Before Vertex

Parametric Equipment and Instrumentation



- Dynamic Orientation
- Dynamic Vessel Heads
- Dynamic Internals
 - Definable number of Trayed/packed sections

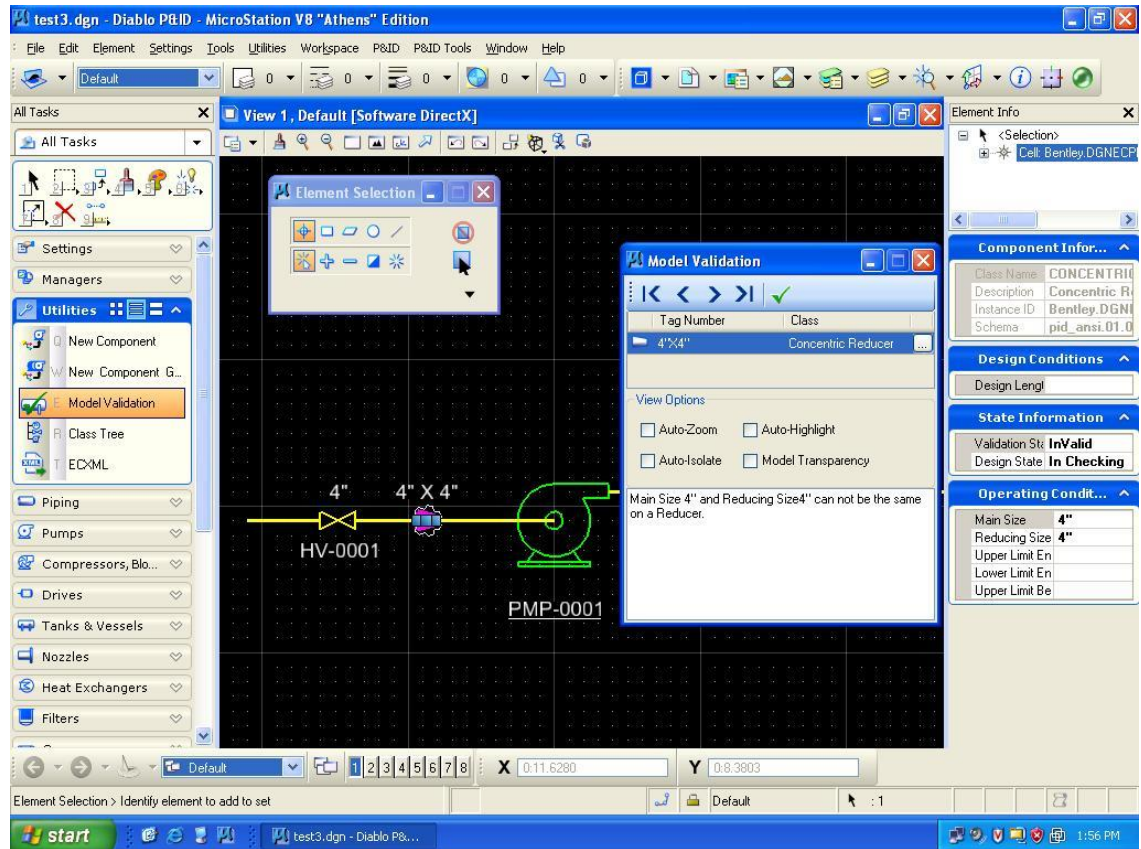


- Dynamic Valve type
- Dynamic Actuator Type

Focus on OpenPlant PowerPID V8i

Key Innovations –

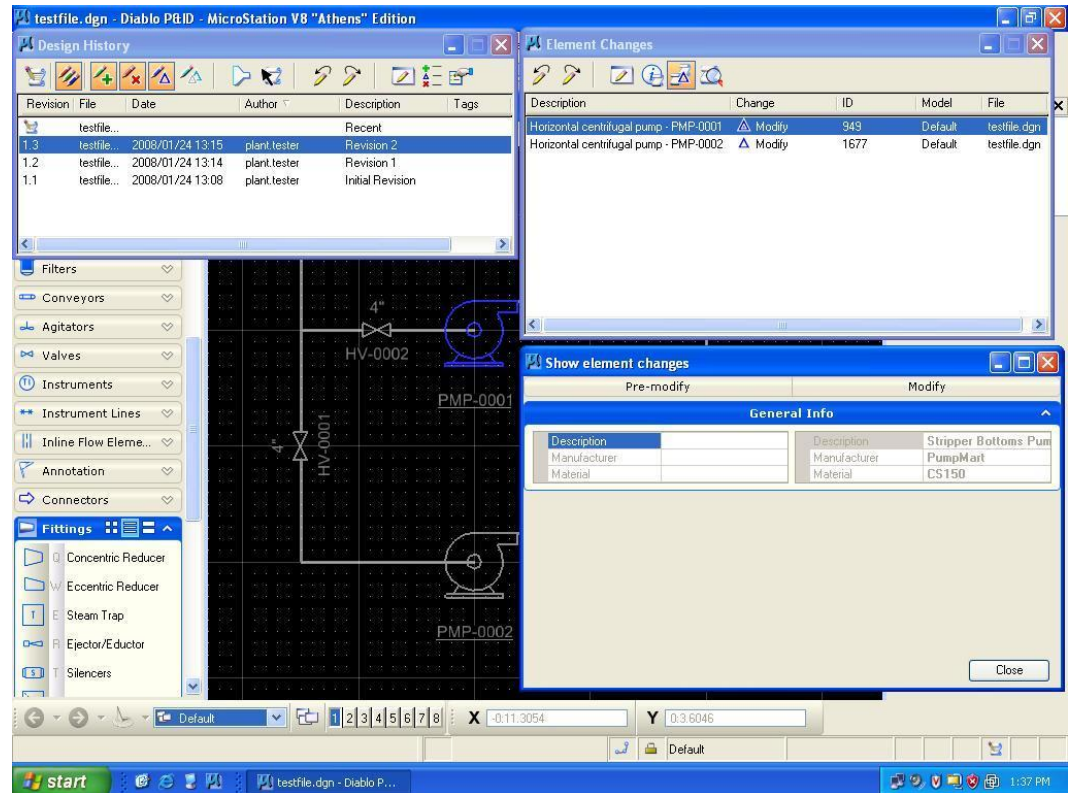
- Model Validation Rules for Easy Customizations
 - Design Rules to validate components in your P&IDs.



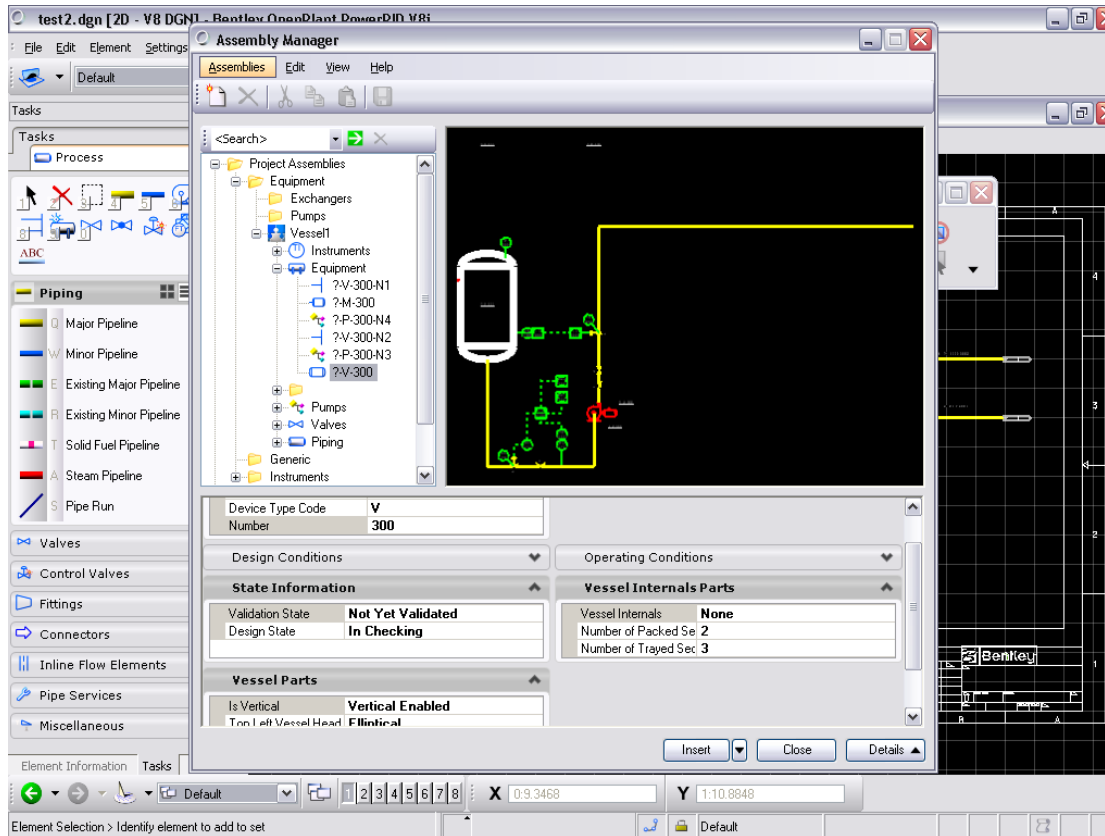
Focus on OpenPlant PowerPID V8i

Key Innovations –

- Design History
 - Ability to save revisions and rollback to a previous design state.

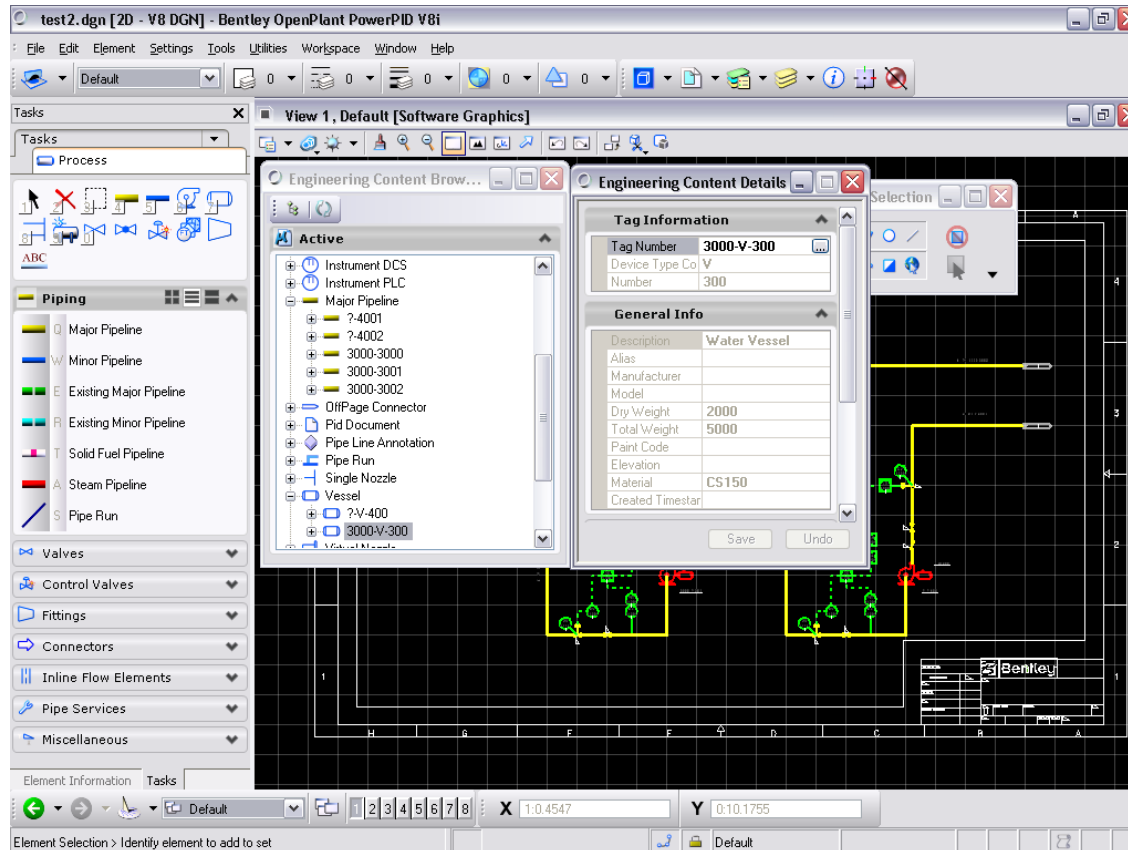


OpenPlant PID *V8i* Assembly Manager



- Choose location to store assemblies (local or on a server)
- Preview Window
- Insert as an Assembly or as individual components

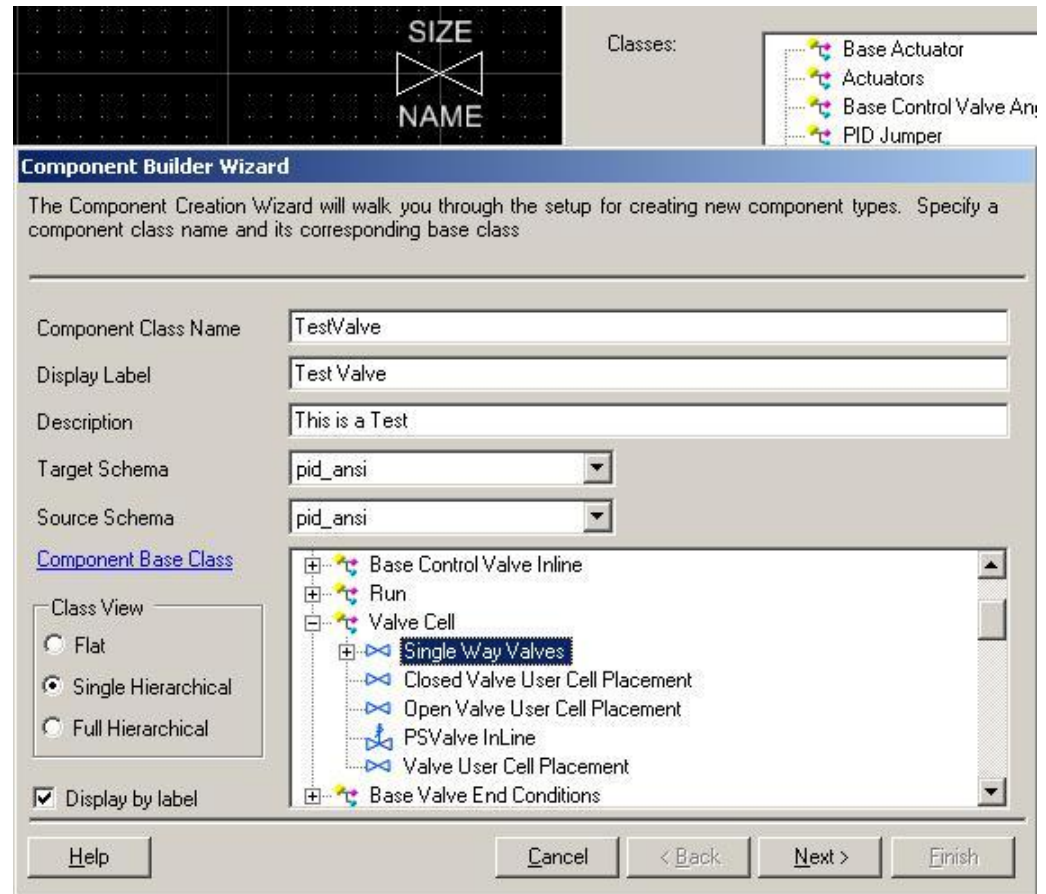
Content Browser



- Easy way to navigate your dense P&IDs
- Find Components – Zoom to them, Isolate them, or highlight them
- Navigate to connected components

New Component Creation

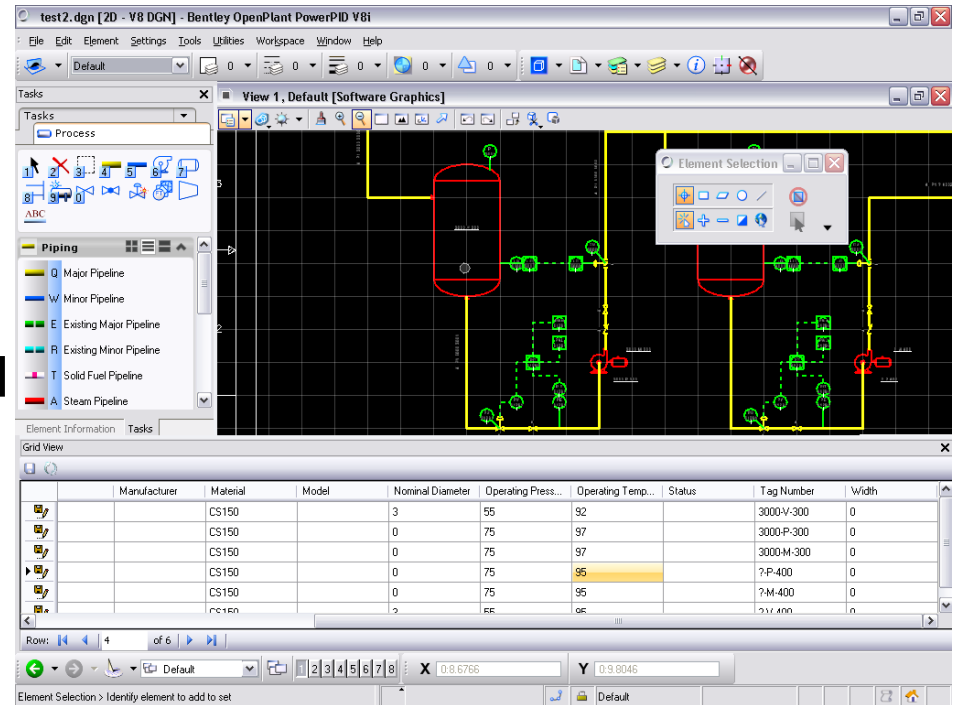
- Easy to use Component Manager allows you to create Components from any graphical elements or existing cells
- User Equipment /Instrument/Valve tools allow you to create new components and classify them from anything drawn on your P&ID.



Focus on OpenPlant PowerPID V8i

Key Innovations –

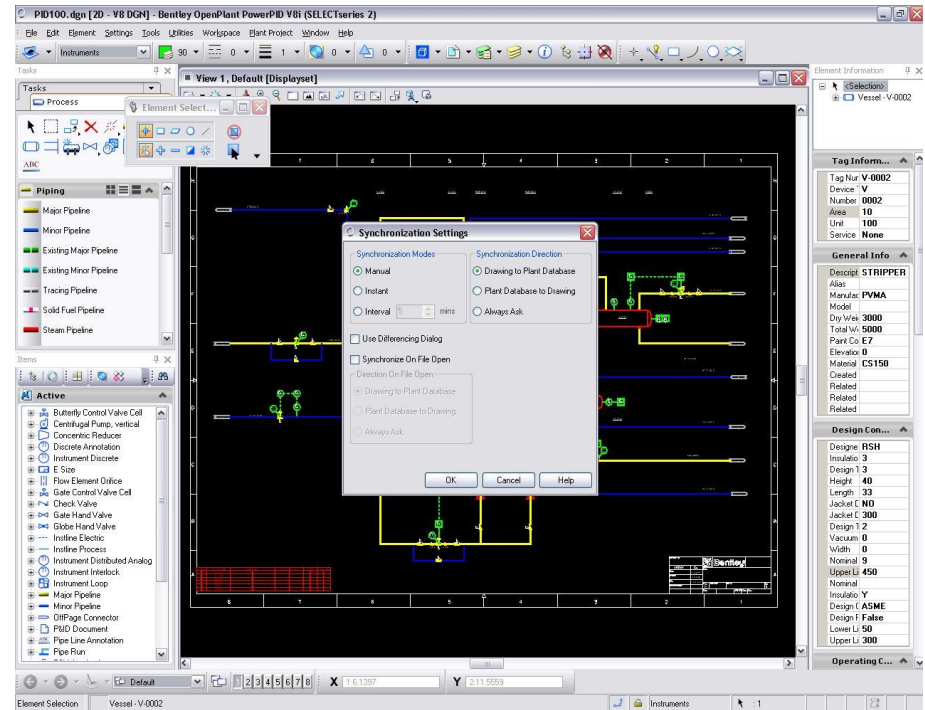
- Reporting
 - Reports can be placed directly on the P&ID or viewed and edited in different formats
 - Reports can be generated for specific classes of components or groups of classes – some examples are:
 - Line List
 - Valve List
 - Equipment List
 - Vessel List
 - Exchanger List



Focus on OpenPlant PowerPID V8i

Database Connectivity

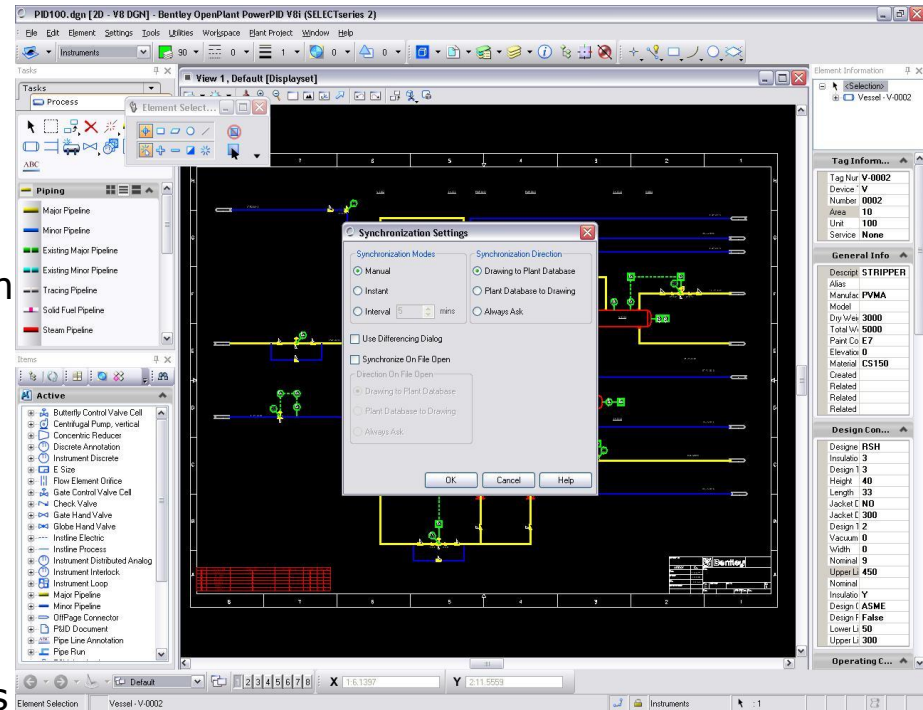
- Connect to the Plant Project Database to store data and share with other applications
 - Data Manager
 - Bentley DataSheets
 - Bentley Instrumentation and Wiring
 - Promis*e
 - Bentley AutoPLANT Plant Design Workgroup



Focus on OpenPlant PowerPID V8i

Database Connectivity

- Project-Wide Reporting with Data Manager
- Synchronization Options
 - Manual – Sync when you choose from drawing to database or vice versa
 - Timed – Choose how long inbetween automated synchronizations and which direction
 - Automatic – Synchronize your work with the project database as you perform the changes.
 - Other Settings Available for Automatically synchronizing drawings with the database on file open and using the available differencing tool



OpenPlant PowerPID *V8i* - Migration

Migration Strategies involve several different applications:

- PlantSpace P&ID – Migration Tools are currently available
- AutoPLANT P&ID – Migration strategy being developed while we continue to develop and support AutoPLANT P&ID
- Microstation/AutoCAD – Similar tools will be available as for PlantSpace and AutoPLANT
- Third Party Applications – Migration will involve moving the P&ID and data to an ISO 15926 representation and importing that model into OpenPlant PowerPID – still under development.

Summary

- OpenPlant PowerPID V8i is the first Schematics tool based entirely on Open Standards.
- Support for both DGN and DWG allows you to produce all your P&ID deliverables through one application.
- Design History gives users the ability to save revisions and revert to previous save points.
- Advanced drafting and reporting features make the product easy to use.
- Connection with the Plant Project Database gives users access to a fully integrated suite of design applications

Thank you

Hands on

- User interface
- Drafting
 - Drawing setting, title block
 - Parametric Equipment, Pipelines, Valves...
 - Offsheet connectors
- Component browser
 - Locate components
 - Zoom options
- Assemblies
- Reporting
- Design History