



# Agenda

- Sustaining infrastructure with AssetWise
- What is Asset Lifecycle Information Management?
- What problem/pains does AssetWise address?
- What is AssetWise?
- Solutions for target markets
- Summary

# About Bentley

## Bentley Subscribers are the ENR Top Design Firms:

- 20 of the Top 20 in:
  - General Building
  - Transportation
  - Power
  - Manufacturing
  - Water
  - Sewer/Waste
- 19 of the Top 20 in:
  - Industrial Process/Petroleum
  - Telecommunications
  - Hazardous Waste
- 47 of the Top 50 Designers in International
- 97 of the Top 100 Pure Design Firms



47 out of 50 U.S. State DOTs use Bentley

## Bentley is:

- #1 in Plant Operations
- #1 in Structural Engineering
- #1 in Water Modeling
- #1 in Roads and Transit Design
- #1 in Bridge Engineering
- #1 in Building Performance

## Global Business:

- Nearly 3,000 colleagues in 45 countries
- \$500 million in annual revenues



# What Is Unique about Operating Infrastructure Assets?

## Heavily governed and regulated

- Public safety is paramount
- High profile accidents often result in new safety/inspection legislation
- Involve several oversight and reporting agencies



## Unique information models

- Comprehensive information network models
- Linear referencing (with overlaid networks)
- Trustworthy information, reports and audit trails



## Support many functional departments, users and locations

- Managers, supervisors, crews
- Public officials and the public
- Central, district and field offices
- Connected and disconnected (mobile)



# Lack of Asset Information Management Is Expensive

## Infrastructure Projects (CAPEX)

- Increases in capital costs
- Extends project schedules
- Increases project risk



## Operation and Maintenance (OPEX)

- Higher operational cost
- Lower asset availability and productivity
- Lost revenues and profitability



## Environmental, Health and Safety

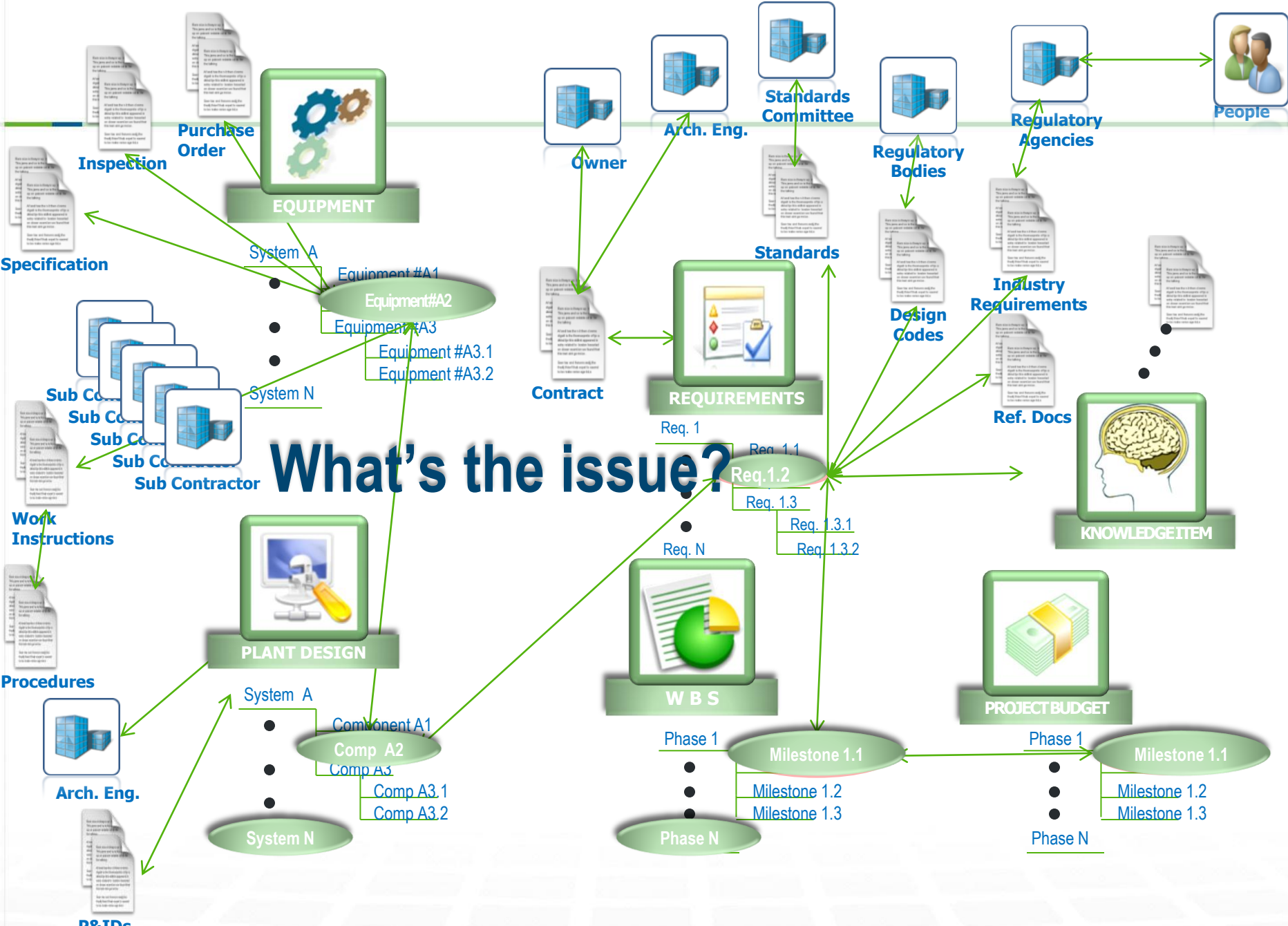
- Risk of non-compliance (fines or shutdown)
- Increasing personnel cost and productivity
- Higher rate and cost of incidents



# What are the Key Pain Points for Owner-Operators?

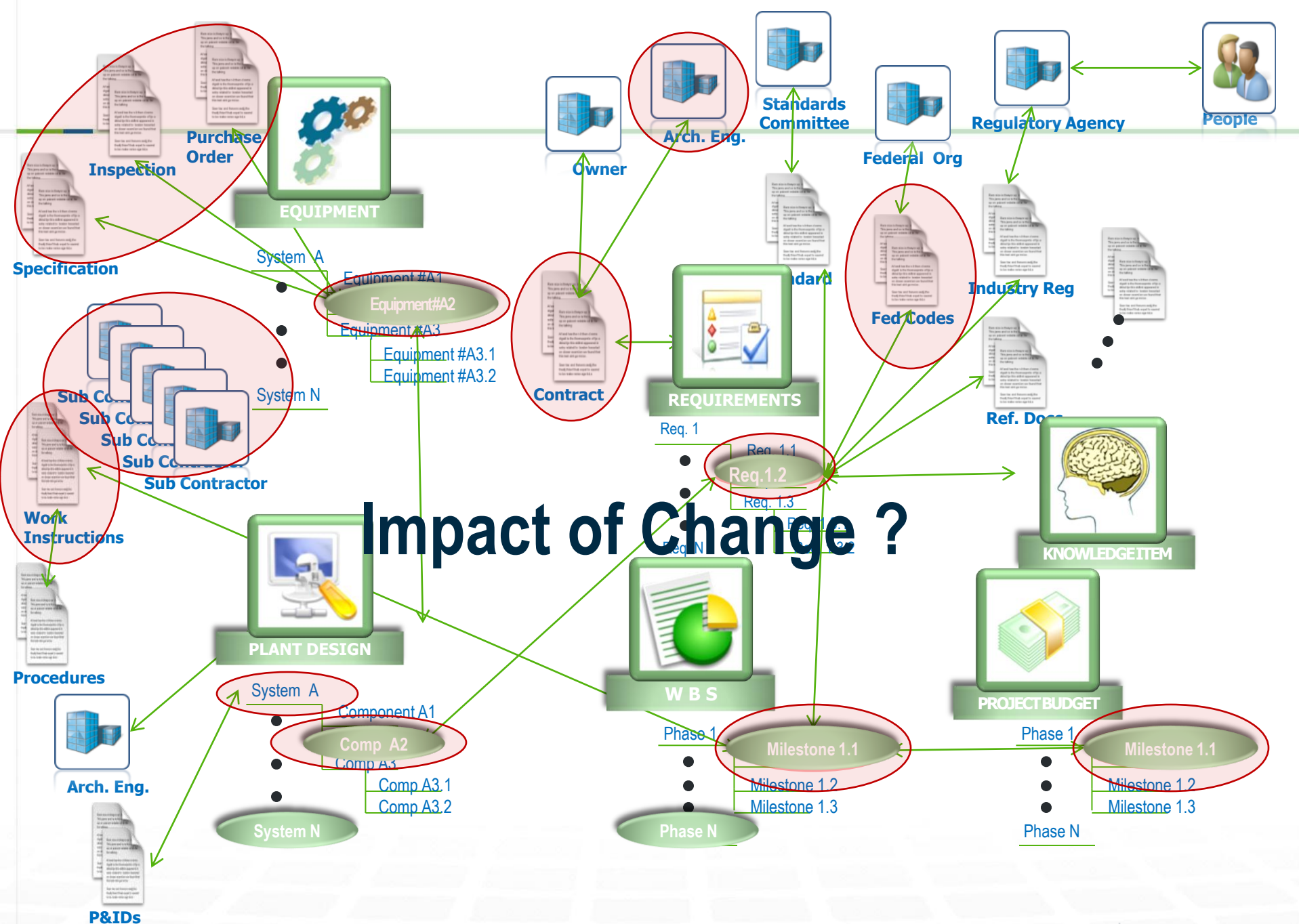
- **Regulatory compliance** (e.g. quality control and auditing)
- **Governance** (e.g. federal funding and filing requirements)
- **Operational efficiency** (access to information you can trust)
- **Maintain service levels** (infrastructure uptime)







# Impact of Change ?





# AssetWise – So what if we could .....

---



**Person**

Name: Larry Roberts  
Department: Mechanical Operations  
Title: Controls Engineer  
Training Certification: Current

**Requirement**

Number: REQ00091  
Name: REACTOR COOLANT ISOLATION PARAMETERS  
Classification: FUNCTIONAL  
Status: SATISFIED

**Knowledge Item**

Number: KI-2010-00146  
Description: CALCULATION ZZ-224 - STROKE TIME REVISIONS FOUND TO IMPACT THIS CONDITION  
Type: ANALYSIS  
Category: SAFETY  
Status: COMPLETE

**Component**

Number/Tag ID: BBHV0013  
Description: RCP A THRM BAR COOL COIL COOL WTR OUT HV  
Classification: COMP\VALVE\MOV\GATE  
Location: Room – ACME PLANT\REACTOR BUILDING\2000  
Status: UNDER CHANGE  
Change Notices: RFR 010065C

**Document**

Number: M-23EG11  
Title: REACTOR COOLANT PUMP PBB01A - COMPONENT COOLING WATER SYS PIPING ISOLATION  
Classification: DRAWING  
Status: LATEST APPROVED (ISSUED)  
Warnings: CHANGE PENDING

**Condition Report**

Number: CR-2010-00023  
Initiator: TOM PERKINS  
Incident Date: 01/30/2010  
Description: EMHV8821A/B OPENING DP DESIGN BASIS REQUIREMENTS  
Requirement: REQ00091  
Priority: L2  
Responsibilities: LARRY ROBERTS  
Process State: CA VERIFICATION  
Related Corrective Actions: CA-2010-000086; CA-2010-000087; CA-2010-000089  
Related Knowledge Items: KI-2010-00123; KI-2010-00146  
Affected Components: BBHV0013; BBHV00130  
Affected Documents: MPR-1861; M-23EG11

**Signal**

Id 1381452  
Latitude 40.374509118  
Longitude -72.549791989  
Mile Post 23  
Number W2030  
Offset (ft) 17  
Signal Type HND  
Track Serving 2  
Travel Direction West

**Catenary Pole (support electric)**

AdjacentTrack 4  
Elevation 2982  
Latitude 41.304558511  
Longitude -73.638804863  
Number 48+908  
Y Offset (ft) 37.000000

**Person**

Name: Jeffrey Rudy  
Department: Rail Operations  
Location: New Jersey – Station N1  
Title: Controls Engineer  
Training Certification: Current

**Rail Defect**

Track 4  
ConditionMeasure -1.0058599710464478  
DefectNumber 09-30932  
Description Crosslevel  
Detected Date 2010-04-05  
14:34:29.66  
Start MPOffset (ft) 4719  
End MPOffset (ft) 4727  
ExceptionLevel 2  
Speed 85  
SurveyNumber 309034

**Document**

Number: SL-2319-2  
Title: SOP – Signal Light Maintenance  
Classification: Standard Operating Procedure  
Status: LATEST APPROVED (ISSUED)  
Warnings: CHANGE PENDING

**Track 2**

Actual Length: 74829.0  
Latitude: 42.374509118  
Longitude: -75.549791989  
TrackType : Low Speed Main



**BRIDGE**  
**CATEGORY:** Overpass  
**STREET:** Fairbrook Rd.  
**INSPECTED:** 30 April 2007  
**INSPECTOR:** R. Flannery  
**HEIGHT:** 22.5 feet  
**ROUTE:** CA-I15-N  
**SEGMENT:** MP-127  
**OFFSET START:** 2018 feet  
**OFFSET FINISH:** 2078 feet

**STREET LIGHT:**  
**CATEGORY:** FWY illumination  
**REPAIR DATE:** 10 Oct 2009  
**REPAIR TYPE:** Bulb  
**HEIGHT:** 21 feet  
**MOUNTING BRACKET:** Pole arm  
**LAMP TYPE:** 1 Low Pressure Sodium  
**SEGMENT:** MP-127  
**OFFSET:** 1592 Feet

**STREET SIGN**  
**CATEGORY:** merge  
**ILLUMINATED:** no  
**MOUNTING HT:** 11.5 feet  
**MOUNTING:** pole  
**ROUTE:** CA-I15-N  
**SEGMENT:** MP-127  
**OFFSET:** 1480 feet

**TRAFFIC LIGHT**  
**CATEGORY:** FWY entrance  
**ILLUMINATED:** yes  
**REPAIR DATE:** 15 Mar 2008  
**REPAIR TYPE:** Bulb  
**MOUNTING HT:** 10.5 feet  
**MOUNTING:** pole  
**ROUTE:** CA-I15-N  
**SEGMENT:** MP-127  
**OFFSET:** 1516 feet

**BARRIER**  
**CATEGORY:** Cement wall  
**LENGTH:** 128 feet  
**ROUTE:** CA-I15-N-M27  
**SEGMENT:** MP-127  
**OFFSET:** 1352 feet

**POT HOLE**  
**CATEGORY:** Hwy defect  
**DAMAGE REPORTED:** 12 Jul 2009  
**REPAIR PRIORITY:** High  
**DATE REPAIRED:** 15 Jul 2009  
**ROUTE:** CA-I15  
**SEGMENT:** MP-127  
**OFFSET START:** 1270 feet  
**OFFSET FINISH:** 1274 feet

Transparent and in context

# AssetWise – Transparent and in context :

eB for EPC™ Enterprise Informatics Projects

Project Dashboard

Project Insk

- Physical It
- Project Bu
- Project De
- Project Loi
- Project Qu
- Project Str
- Project Nr
- 10 CFR 1
- 10 CFR 2
- Project P
- Phase 0
- Phase 1
- Feasibi
- Estim.
- Stage
- Stage
- Miles
- Lamp
- Brai
- MeB
- RFD
- Stage
- Stage
- Phase 2
- Phase 3
- Phase 4
- Phase 5

## Crossrail Contract Administration Dashboard

**CONTRACT(S) SELECTED** C305,C350,C501,C503,C510,C511,C512

**SUMMARY DATA (RED FLAGS & KPIs)**

**EWN**

RAISED BY: CONTRACTOR (302), PM (49)

AVG OPEN TIME: 86 DAYS

< 7 d: 34, 7 - 14 d: 31, > 14 d: 288

**NCE**

RAISED BY: CONTRACTOR (47)

AVG OUTSTANDING TIME: 105 DAYS

< 7 d: 0, 7 - 14 d: 4, > 14 d: 43

**CQT**

INSTRUCTED BY PM: 815

CONTRACTOR RESPONSE OUTSTANDING: 0

SUBMITTED BY: 587

PM RESPONSE OUTSTANDING: 58

ACCEPTED (ICE): 265, REJECTED: 31

RE-SUBMIT CQT: 188

PMA: 49

**ICE**

NUMBER: 424, VALUE: £0, TARGET COST GROWTH: +6.6%

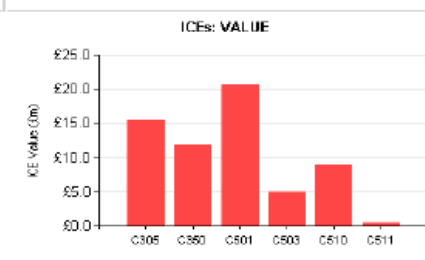
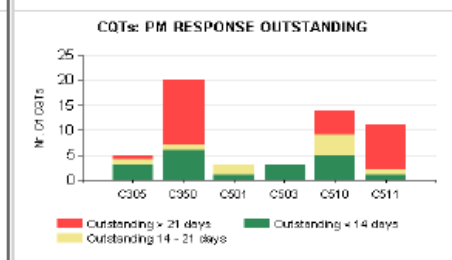
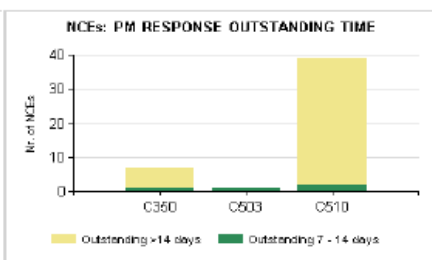
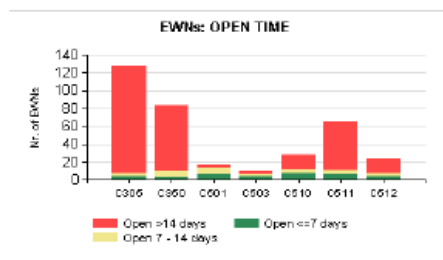
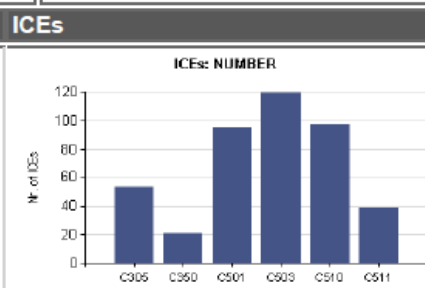
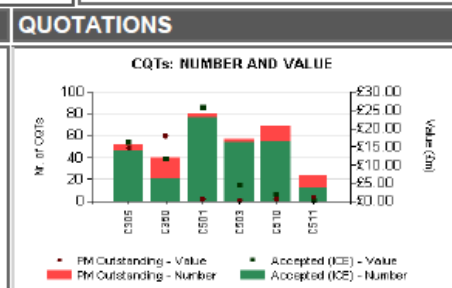
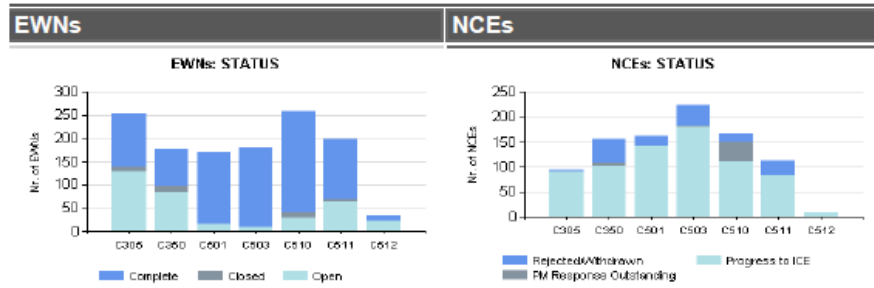
**PMIs (TOP 10 CLAUSES)**

Applicable Clause	Nr.
Clause No. 14.3 - Change the Works Information	596
Clause No. 60.1 - The PM gives an Instruction	90
Clause No. 61.2 - Submit quotation for proposed	53
Clause No. 61.1 - Submit quotation	18
	12
Clause No. 34.1 - To stop or not to start any work	7
Clause No. 62.3 - Submit revised quotation	4
Clause No. 17.1 - Overcome ambiguities and	2
Clause No. 73.1 - Deal with an object of value or	1
Clause No. 82.1 - Repairs	1
Clause No. 61.4 - Submit quotation	1

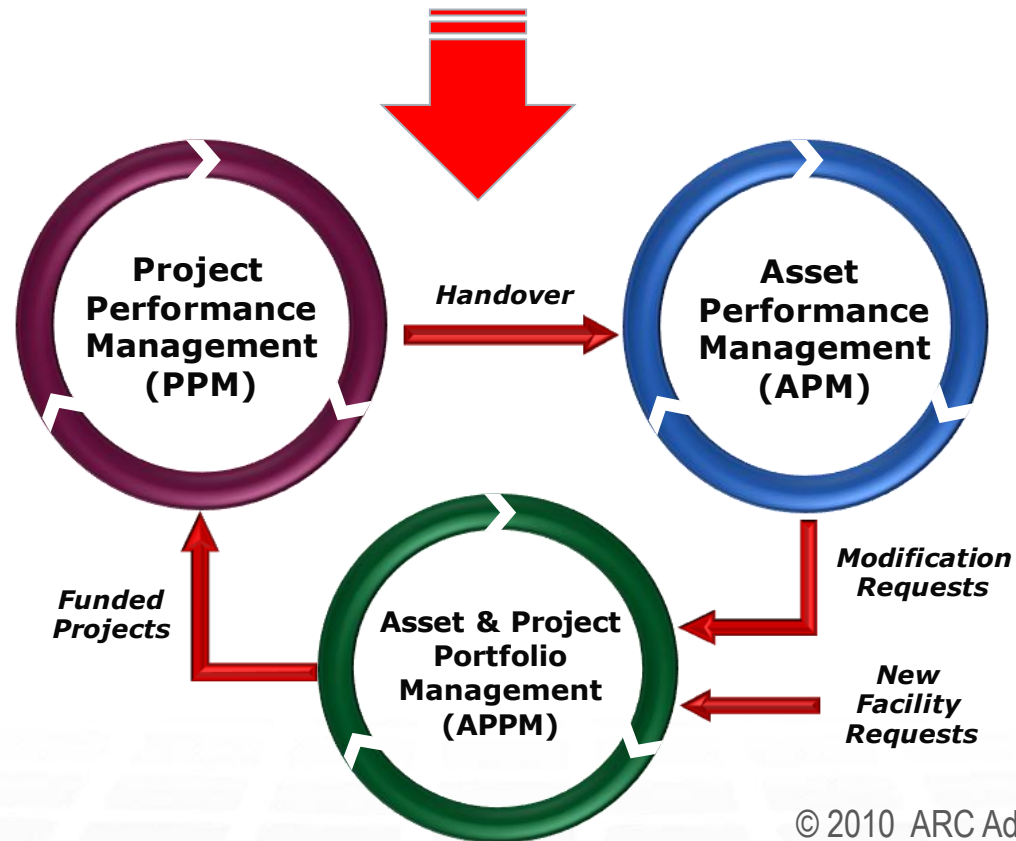
**DATE / TIME** 4/10/2012 10:17:59 PM

**PMAs/ ICEs DEEMED ACCEPTED**

PMAs			ICEs (D.A.)		
Contract	Nr.	Value (£k)	Contract	Nr.	Value (£k)
C503	67	£0k			
C501	24	£0k			
C511	24	£0k			
C305	10	£0k			
C510	2	£0k			



# The ARC Business View



© 2010 ARC Advisory Group

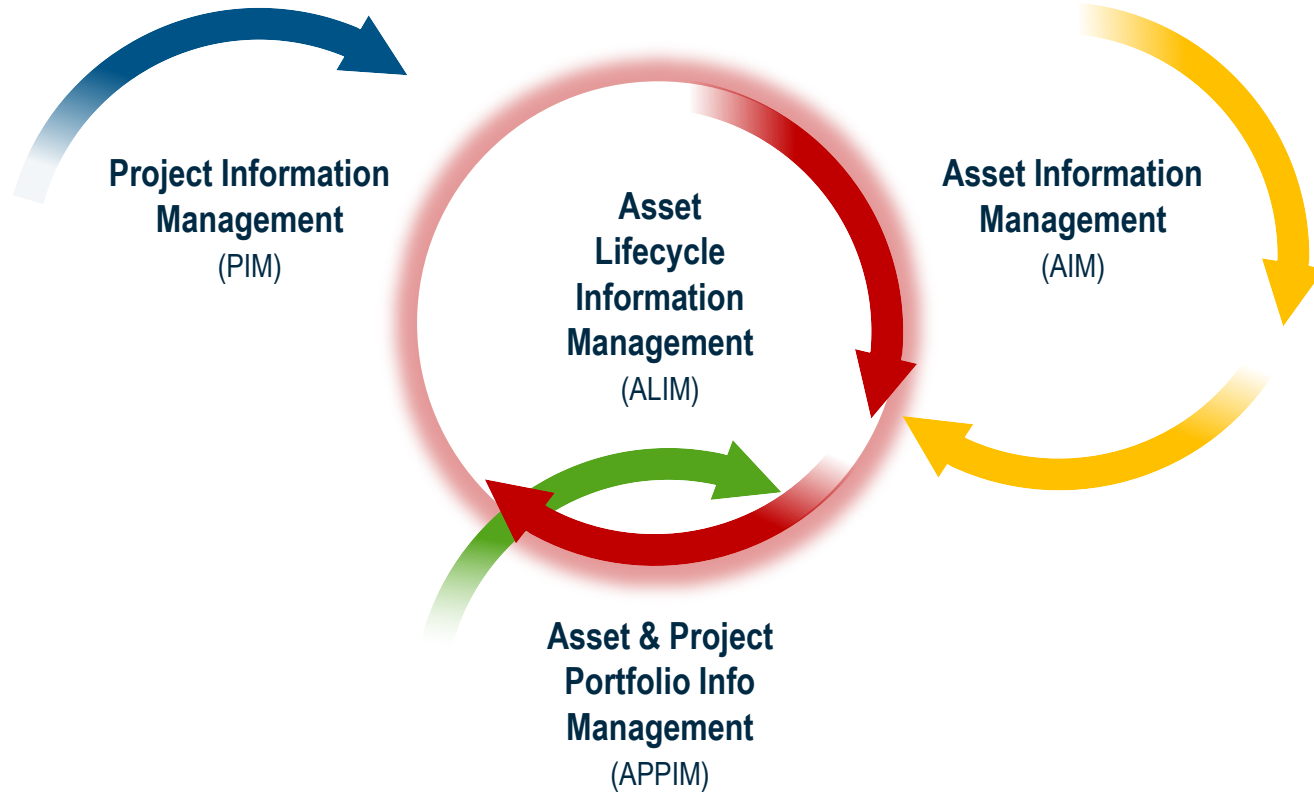


# Asset Lifecycle Information Management



Source: ARC Advisory Group  
Information Management Strategies for Asset Lifecycle Management  
© 2010 ARC Advisory Group

# Asset Lifecycle Information Management (ALIM)

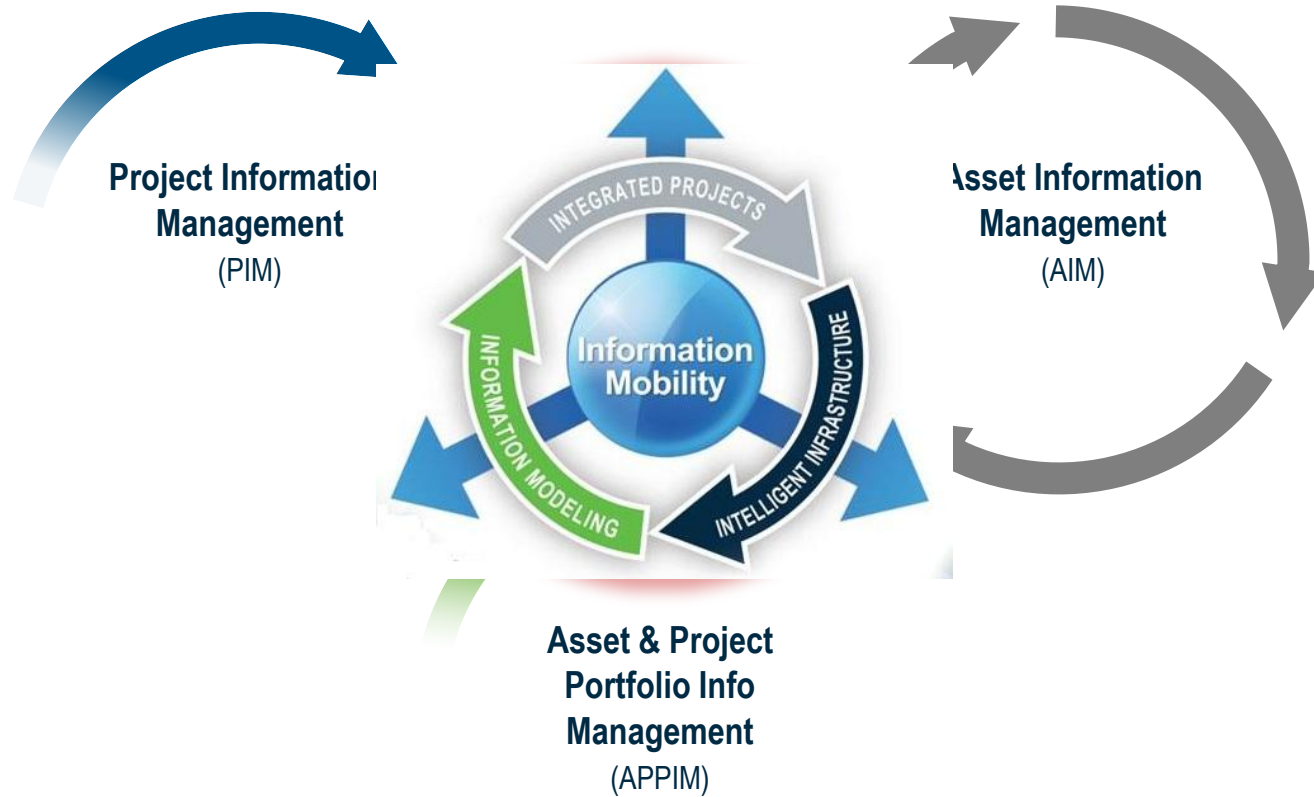


Source: ARC Advisory Group

*Information Management Strategies for Asset Lifecycle Management, January 2010*

© 2010 ARC Advisory Group

# Delivering ALIM :





# Information Modeling

through

# Integrated Projects

for

# Intelligent Infrastructure



# AssetWise Use Cases

## eB Insight Use Cases

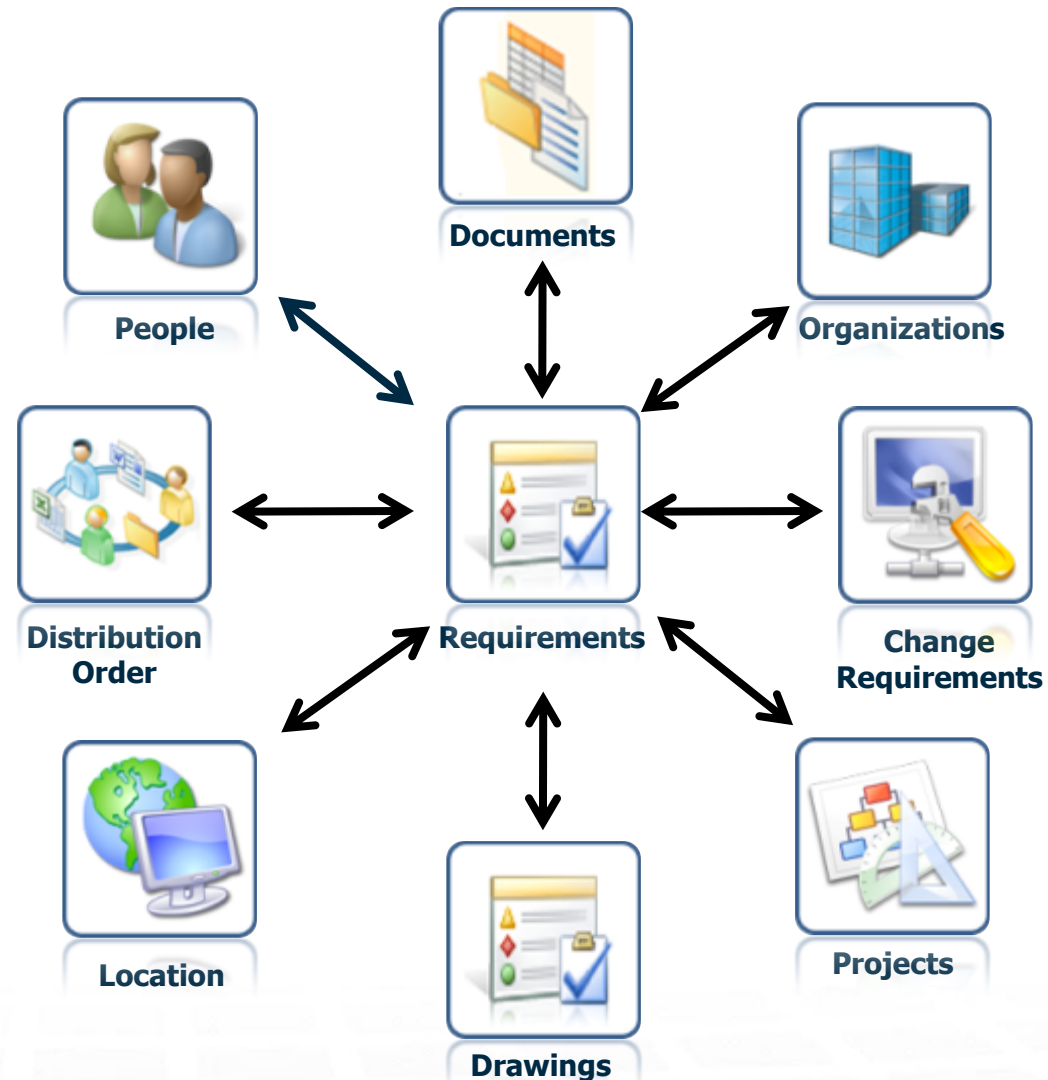
- Corrective Action
- Master Equipment List / Configuration Control
- Management of Change
- Relationship Management
- Drawing Management
- Document Control
- Document Management
- Cyber Security
- Operating Experience
- Benchmarking & Observations
- Requirements Management

## Other Use Cases

- Exor
- SUPERLOAD
- Optram
- sisNET
- InspectTech
- Ivara (APM)

# AssetWise: Operations Information Modeling

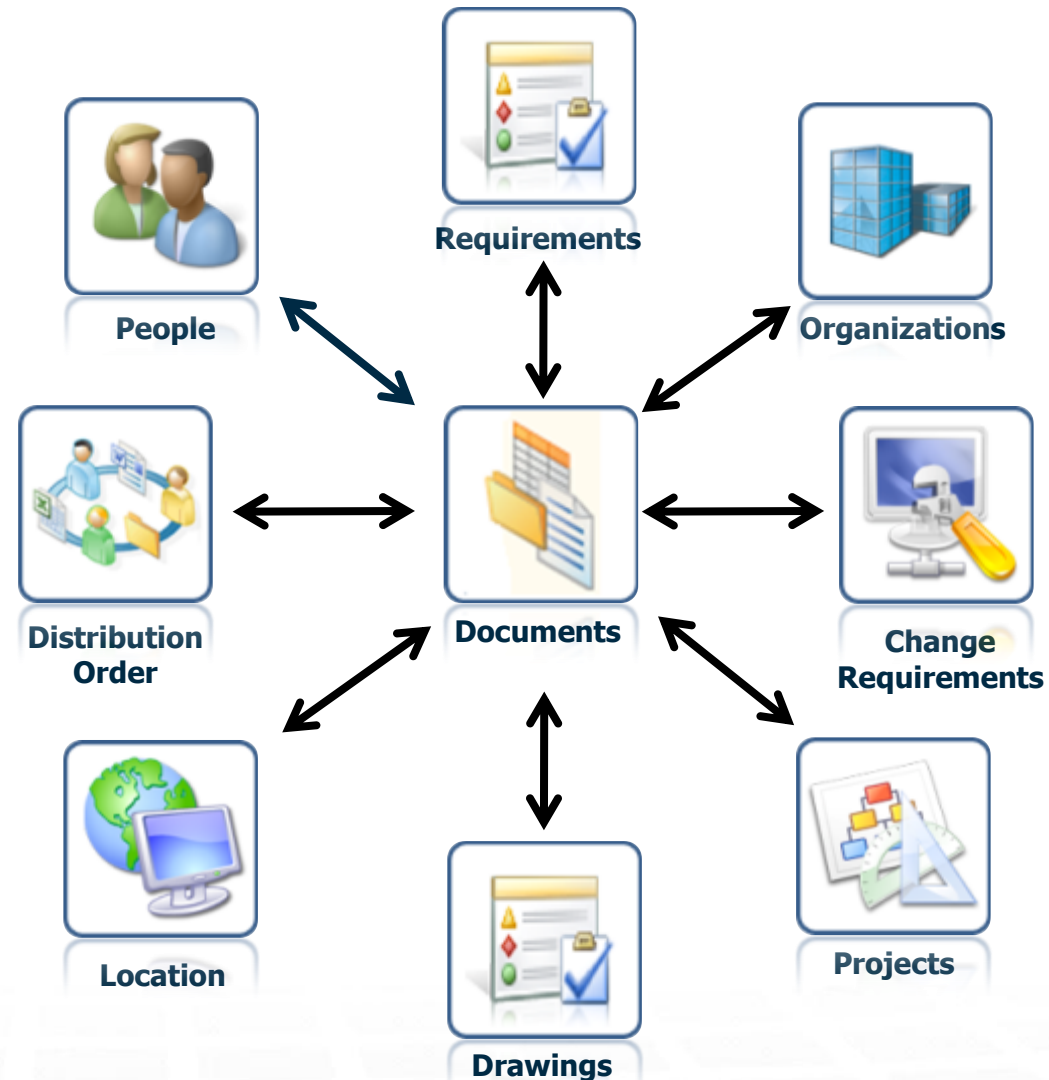
- Manages much more than documents...
- Relates structured and unstructured information to teams, organization & the enterprise
- Focuses on how the information is related to the relationships
- Records conditions, incidents, events and corrective actions
- Captures, tracks, facilitates and transmits changes
- Creates auditable sequences of how and why information changed





# AssetWise: Operations Information Modeling

- Manages much more than documents...
- Relates structured and unstructured information to teams, organization & the enterprise
- Focuses on how the information is related to the relationships
- Records conditions, incidents, events and corrective actions
- Captures, tracks, facilitates and transmits changes
- Creates auditable sequences of how and why information changed

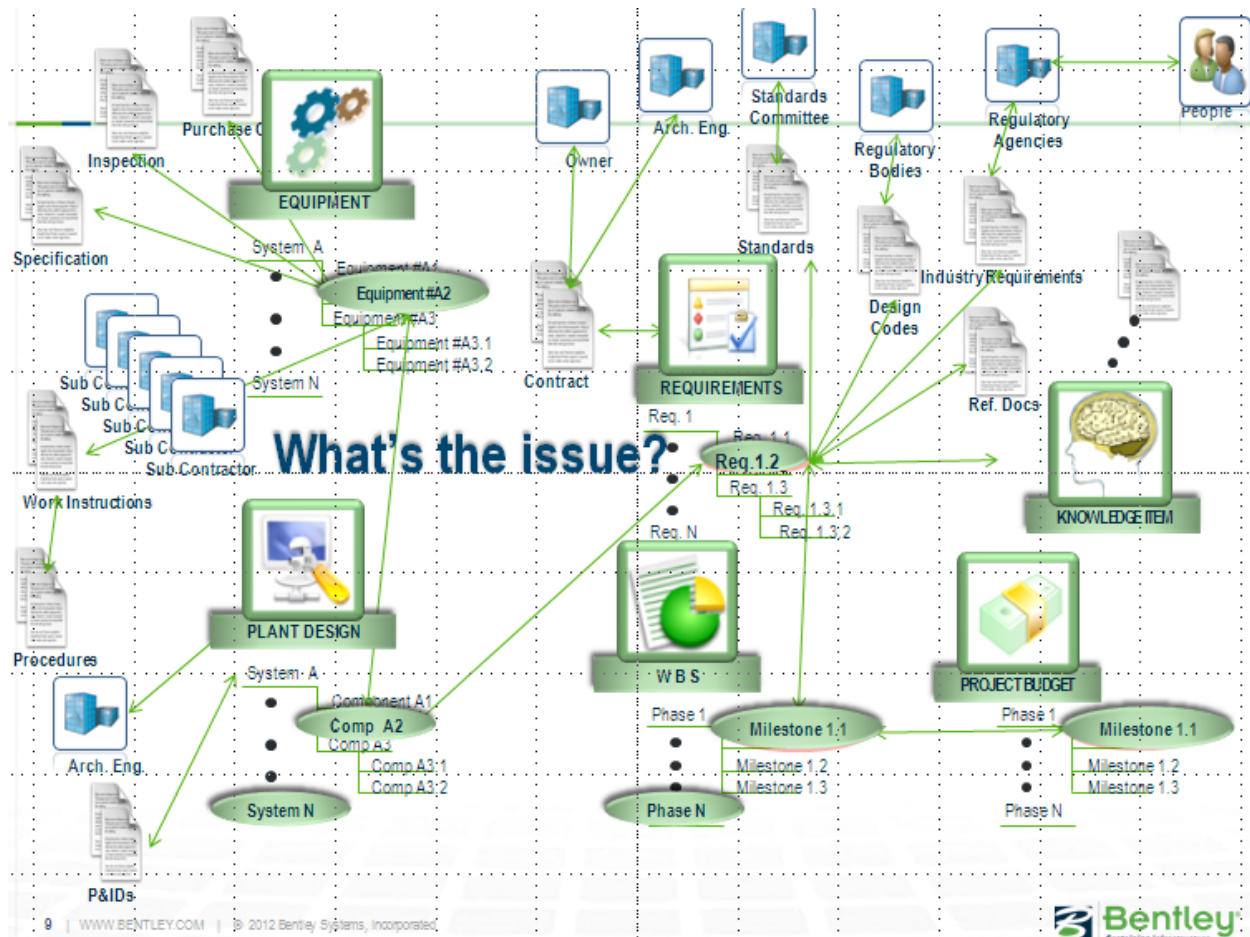


# AssetWise: Operations Information Modeling

- Manages much more than documents...
- Relates structured and unstructured information to teams, organization & the enterprise
- Focuses on how the information is related to the relationships
- Records conditions, incidents, events and corrective actions
- Captures, tracks, facilitates and transmits changes
- Creates auditable sequences of how and why information changed



# Configuration Management

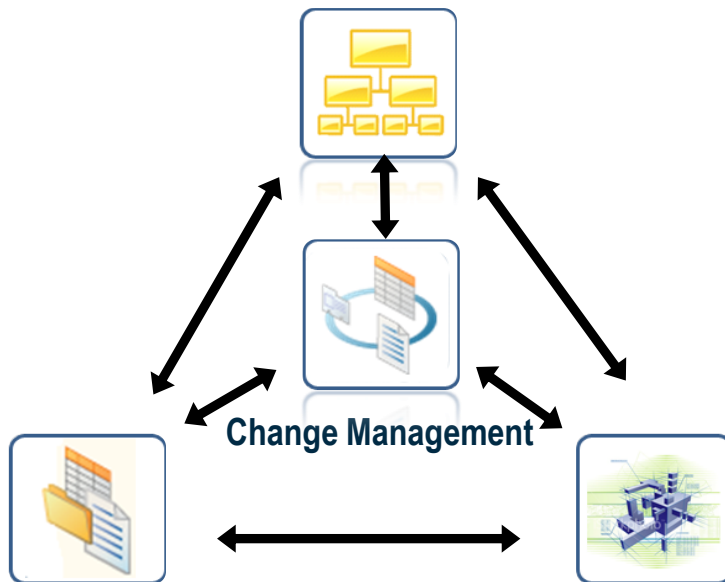




# Configuration Management

Design Basis / Requirements / Regulations /  
Contracts / Permits / Licenses

*"What is allowed to be there"*

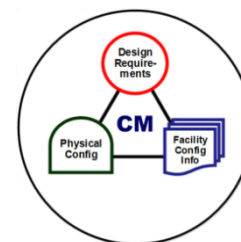


**Information Management**

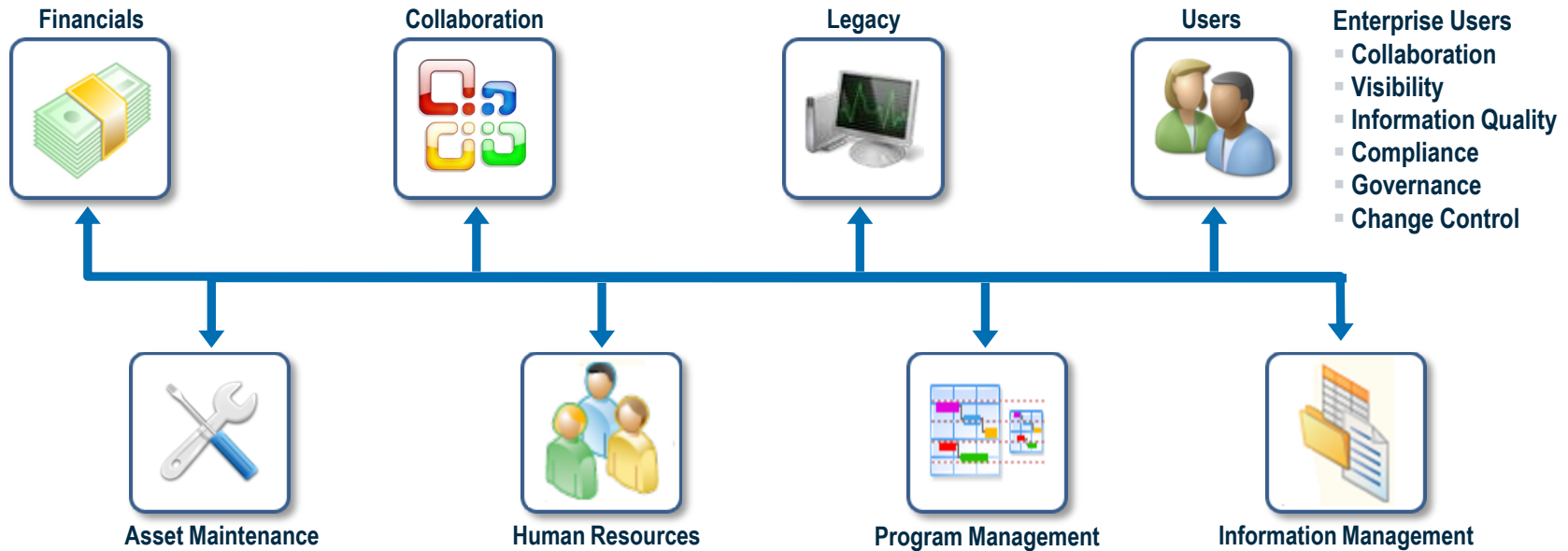
*"What we say is there"*

**Physical Configuration**

*"What is there"*

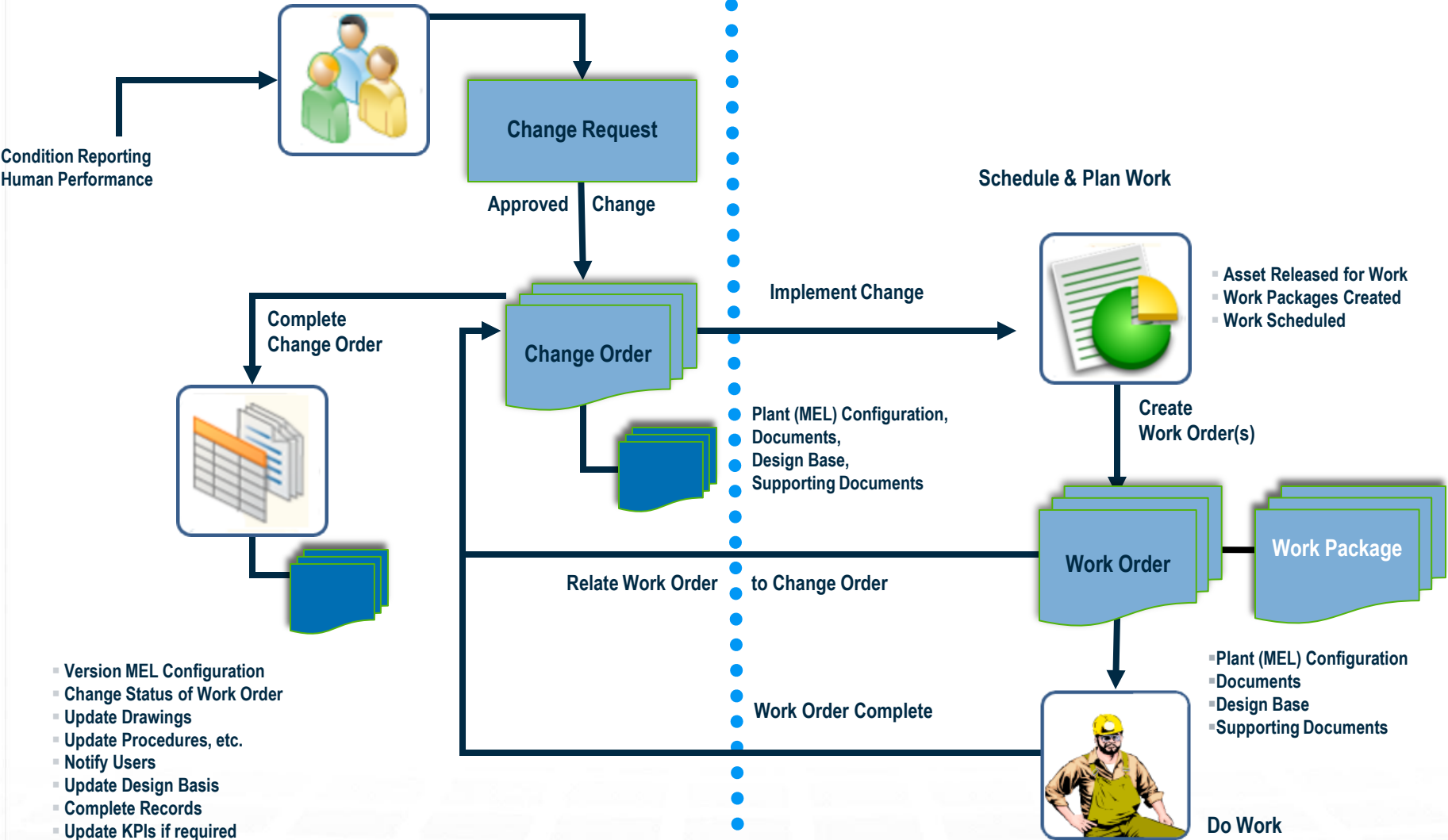


# Enterprise Integration



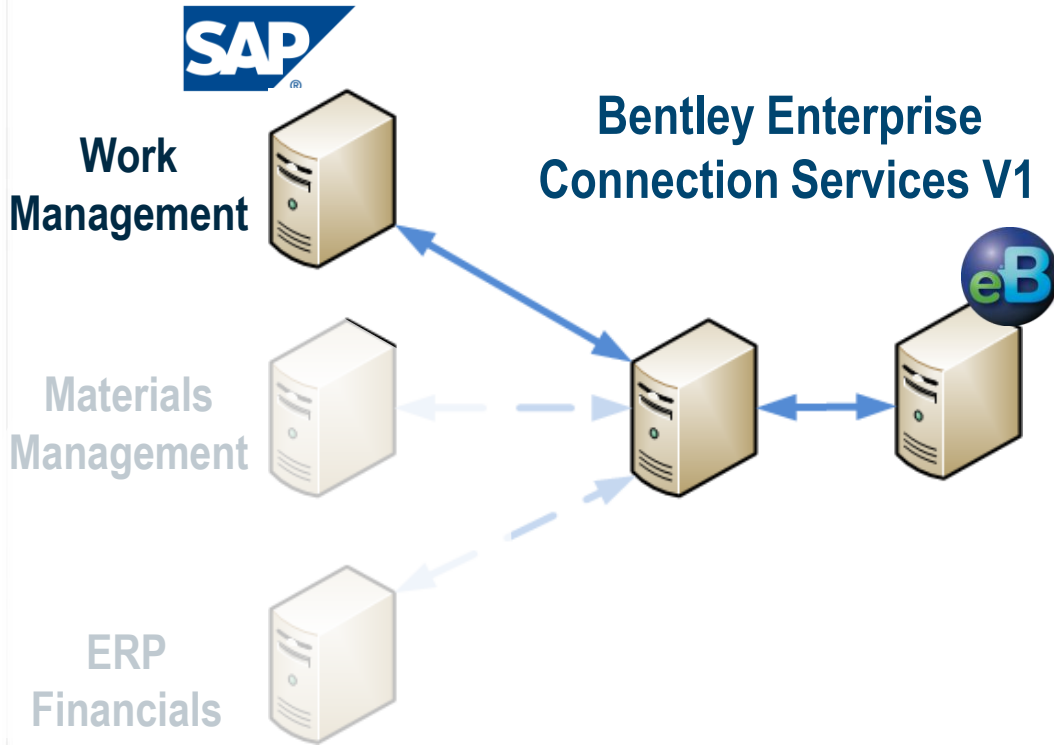
## AssetWise

- Configuration Control
- Controlled Docs
- Records Management
- Engineering Design
- Corrective Action
- Human Performance
- Knowledge Management





# Bentley Enterprise Connection Services Offers Certified SAP Integration



## Certificate SAP INTEGRATION CERTIFICATION

SAP AG hereby confirms that the interface software for the product

**Bentley Enterprise Connection Services 1.0**

of the company **Bentley Systems, Inc.**

has been certified for integration with SAP NetWeaver 7.0 based on ICC Integration Assessment for SAP NetWeaver.

This certificate confirms the existence of product features in accordance with SAP certification procedures. It does not guarantee that the product is error-free.

The certification test is documented in report no. 19291993 and expires May 7, 2015.

Vendor Hardware: PC-Pentium, x64  
Vendor Operating System: Windows 2003  
SAP Test System: SAP NetWeaver 7.0  
Used Integration Tools: certified ACE Enterprise Platform

This configuration meets the requirements for connecting Bentley Enterprise Connection Services 1.0 to SAP NetWeaver.

### Certified Functions:

- Query Metadata from SAP (Tables, structures, views, BOR data)
- Query Table Data from SAP
- Call available BAPIs and RFC modules
- Basic IDoc communication
- Unicode communication enabled
- SAP Solution Manager Ready Functionality

Waldorf, May 8, 2012

Christoph Claus, SAP AG

SAP, R/3, and SAP NetWeaver are registered trademarks of SAP AG Germany. All other names are registered or unregistered trademarks of the individual firms. <http://www.sap.com/icc>



**SAP® Certified**  
Integration with SAP NetWeaver®

# Platform Technology

- Servers: Affordable .NET Windows Servers
- Database: MS SQL or Oracle
- User Interfaces: .NET Windows Clients, IIS Web
- SharePoint Connection Services



# Hand-over Becomes *Hands-on!*

## Project Information Management

Simulate (Design) & Construct (Build)

## Asset Information Management

(Operate & Maintain)

# ProjectWise

“Work in Progress”

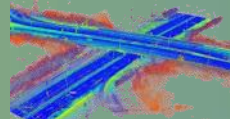
Continuous  
Handover

# AssetWise

“Management of Change”

  
Records  
Management

Point -cloud  
Streaming



## SHARED SERVICES



Transmittals



Dynamic Rights  
Management



# AssetWise Market Segments

- Target Markets

- Transportation (Road/Bridge Networks)
- Transportation (Rail Networks)
- Power Generation (Nuclear and APM)
- Oil & Gas (Existing and New Plant, APM)
- Mining (APM)
- All Solutions (Document Control)



# AssetWise for Road/Bridge Networks

## Pains

- Lack of accurate linear asset information
  - Delays and/or reduces federal funding allocations
  - Impacts decision making and priority setting
  - Increases project delays and cost of maintenance
  - Increases risk to public safety



## Advantages

- Accurate linear asset information
  - Ensures asset information integrity to improve operational efficiency
  - Supports federal and public funding initiatives to increase allocations
  - Supports public transparency and safety to lower cost/risk of regulatory compliance

# AssetWise Users for Road/Bridge Networks



# AssetWise for Rail Networks

## Pains

- Lack of accurate Rail asset information
  - Increases risk to public safety
  - Impacts decision making and priority setting
  - Increases project delays and cost of maintenance
  - Delays asset renewals and capacity improvement

## Advantages

- Accurate Rail asset information
  - Improves public safety decisions and priorities
  - Asset knowledge avoids run-to-fail situations
  - A “single source of truth” of asset information
  - Empowers maintenance decision support
  - Supports asset renewals and capacity improvements projects





# AssetWise Users for Rail



# AssetWise for Nuclear Power Generation

## Pains

- Lack of accurate asset information
  - Higher risk of non-compliance with NRC regulations
  - Increases cost and duration of plant shutdowns
  - Delays asset renewals and capacity improvement
  - Increases “wrench-time” and re-work



## Advantages

- Accurate asset information
  - Meets regulatory requirements reducing risk of non-compliance
  - Manages the impact of change efficiently and reliably
  - Captures and retains operating experience and knowledge
    - improves plant safety and security
    - shortens plant shutdowns
    - lowers operational costs

# AssetWise Users for Nuclear



# AssetWise for Oil and Gas



## Pains

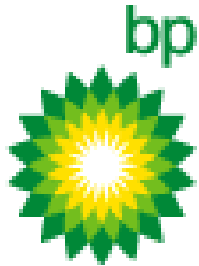
- Lack of accurate asset information
  - Time needed to locate accurate, up-to-date asset information to support operational activities (maintenance, inspection)
  - Asset data spread across systems increases time to find and can compromise operational efficiencies and asset integrity.

## Advantages

- Accurate asset information
  - Maximizes system availability by providing easy/quick access to trustworthy information to yield faster response times
  - Minimizes downtime and improves overall asset performance, availability and safety
  - Supports progressive, continuous handover



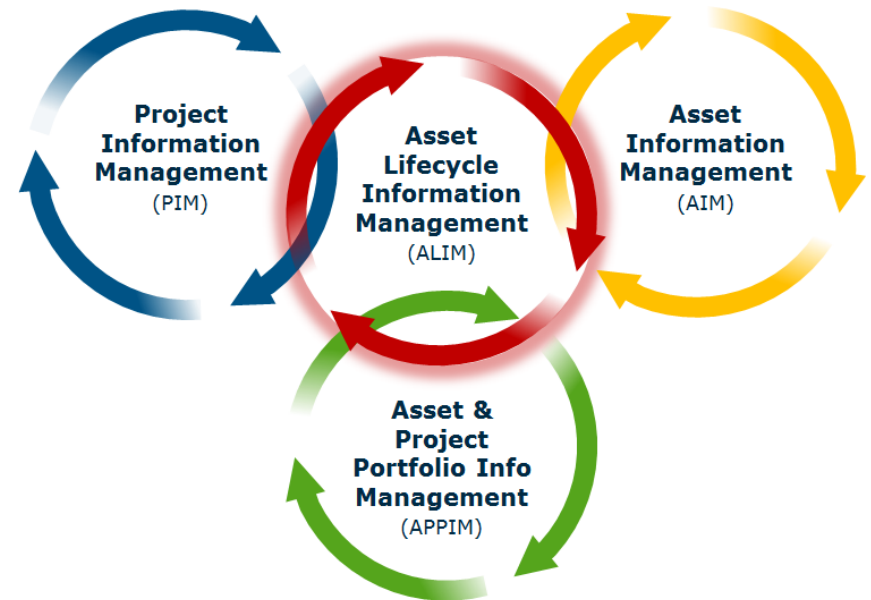
# AssetWise Oil and Gas Users



# Asset Lifecycle Information Management

## Ensuring trustworthy information throughout the lifecycle of infrastructure

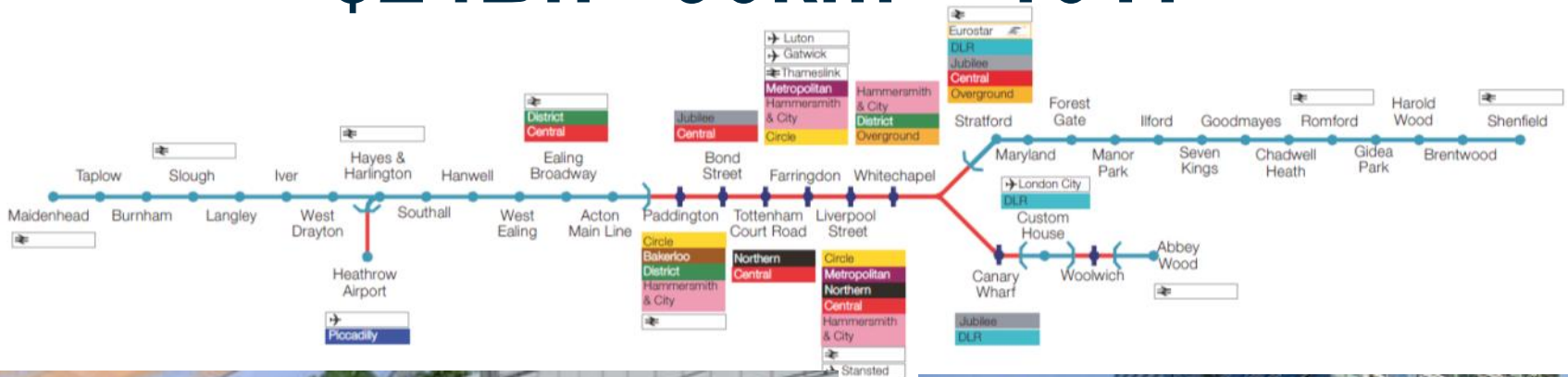
- Continuous, Managed Handover
- Configuration Management
- Change Management
- Records Management
- Knowledge Management
- Workflow Processes
- Compliance



# Crossrail – a Vision to Integrate



**\$24Bn 90km 10Yr**



# Lifetime Aspirations...

1980's

2000's

2010's

2D

+

3D

+

Simulation

“Schematic”

+

“Physical”

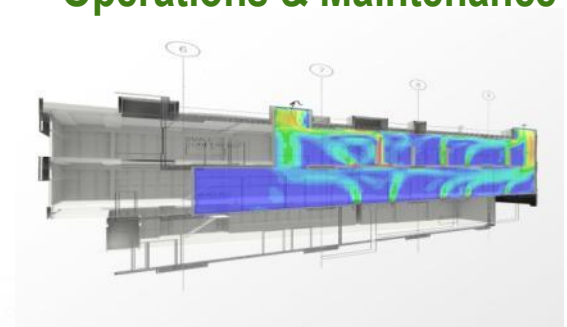
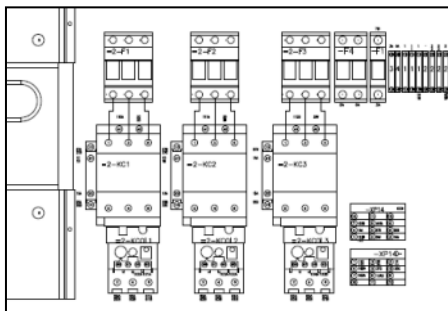
+

“Performance”

- Design
- Documentation

- Design
- Visualization
- Construction

- Design
- Visualization
- Construction
- Operations & Maintenance





# Announcement

## Big data meets big infrastructure as Bentley acquires Ivara

### Bentley's Acquisition of Ivara Redefines Asset Performance Management: Integrating OPEX with CAPEX!

Bentley Systems, Incorporated, a provider of asset performance management (APM) software solutions for organizations in asset-intensive industries, including mining, metals, power generation and utilities, oil and gas, and petrochemical. Bentley will integrate Ivara into its existing AssetWise portfolio. This deal gives Bentley new hooks into aspects of enterprise IT beyond engineering and operations, linking engineering data and as-built data with the rest of the organization infrastructure.



Bentley will use Ivara technology to bring new analytic opportunities to the mass of data collected in plants and utilities.

Bentley says Ivara's EXP solution helps owner-operators obtain the best performance, reliability, and safety from their assets. APM software works with transaction-oriented enterprise asset management systems such as IBM Maximo and SAP EAM by helping to build and implement asset-specific reliability strategies. Ivara is an IBM Member-Level Partner with Certified Ready for Tivoli integration and an SAP Software Solution Partner with SAP Certified—Powered by NetWeaver integration. Terms of the deal were not disclosed; both companies are privately held.

September 18, 2012  
Source: Bentley Systems, Inc.

**Bentley Systems, Incorporated**, the leading company dedicated to providing comprehensive software solutions for sustaining infrastructure, today announced that it has acquired Ontario, Canada-based Ivara Corporation, a leading provider of asset performance management (APM) software solutions for organizations in asset-intensive industries, including mining and metals, power generation and utilities, oil and gas, and petrochemical. The Ivara EXP solution – a core system mission critical to operations and maintenance, combined with a proven implementation methodology and the Aladon Network's seasoned reliability practitioners – helps owner-operators obtain the best performance, reliability, and safety from their assets. APM software supplements and leverages value in transaction-oriented enterprise asset management systems such as IBM Maximo and SAP EAM by helping to build and implement asset-specific reliability strategies. Ivara is an IBM Member-Level Partner with Certified Ready for Tivoli integration as well as an SAP Software Solution Partner with SAP Certified - Powered by NetWeaver integration.

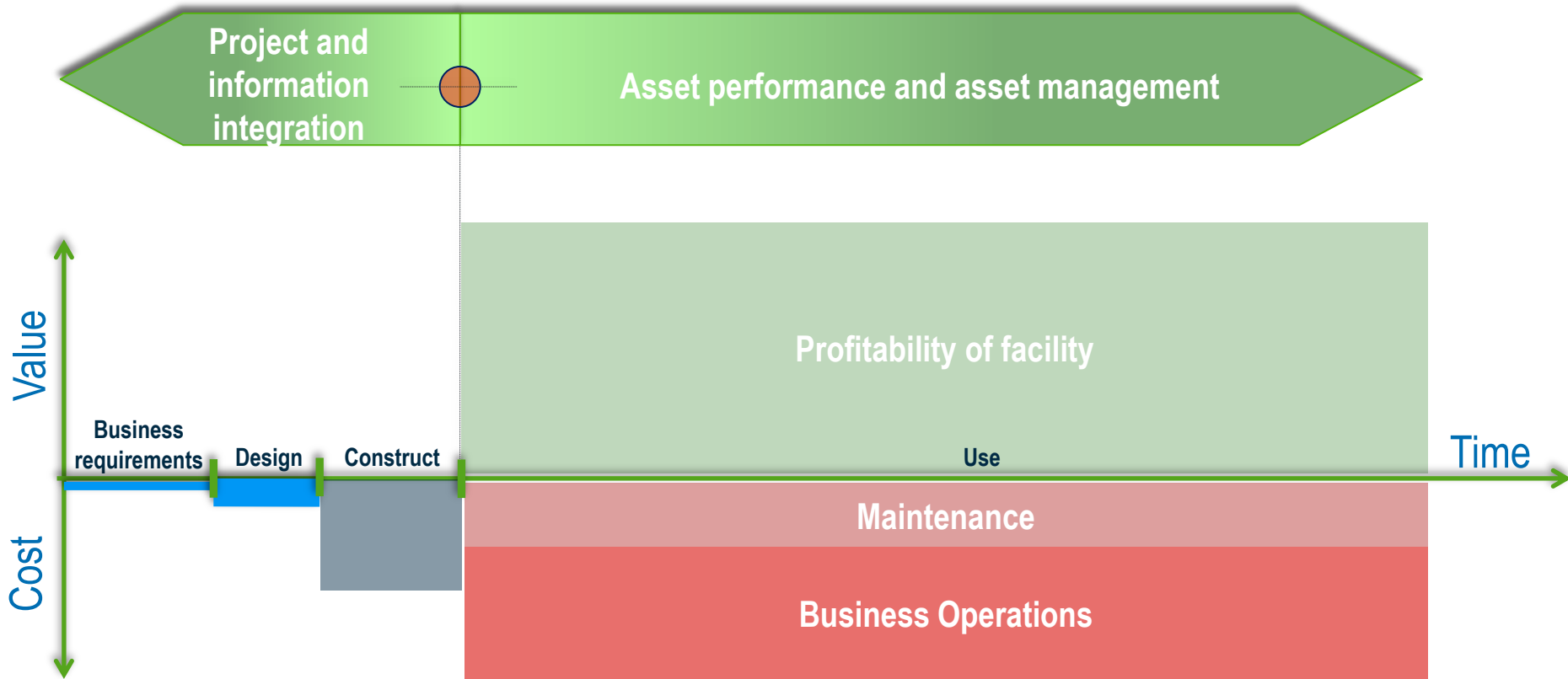
Business benefits of Ivara EXP include maximized availability and utilization; reduced operational costs; extended asset life; structured compliance with safety, environmental, and other regulations; and the systematic capture and application of asset performance knowledge and industry best practices. Ivara EXP also provides dashboards for asset health monitoring, allows organizations to understand and manage the risks associated with equipment failures, and turns the volumes of operational data into actionable information, enabling timely and accurate maintenance decisions.

With this acquisition, Bentley uniquely extends its AssetWise asset lifecycle information management software and services to comprehensively improve asset performance, providing new value-adding opportunities not only for owner-operators, but also for the engineering/procurement/construction firms who design, build, and commission their infrastructure. The compelling ROI driver of enhanced performance for existing assets is underscored by the Bentley Infrastructure 500 tabulation of Top Owners – whose net infrastructure investment is cumulatively valued at over 14 dollars!

For additional information about Bentley's AssetWise asset lifecycle information management offerings, visit [www.bentley.com/AssetWise](http://www.bentley.com/AssetWise). For additional information about Bentley's new Ivara EXP asset performance management solution, visit [www.bentley.com/Ivara](http://www.bentley.com/Ivara)

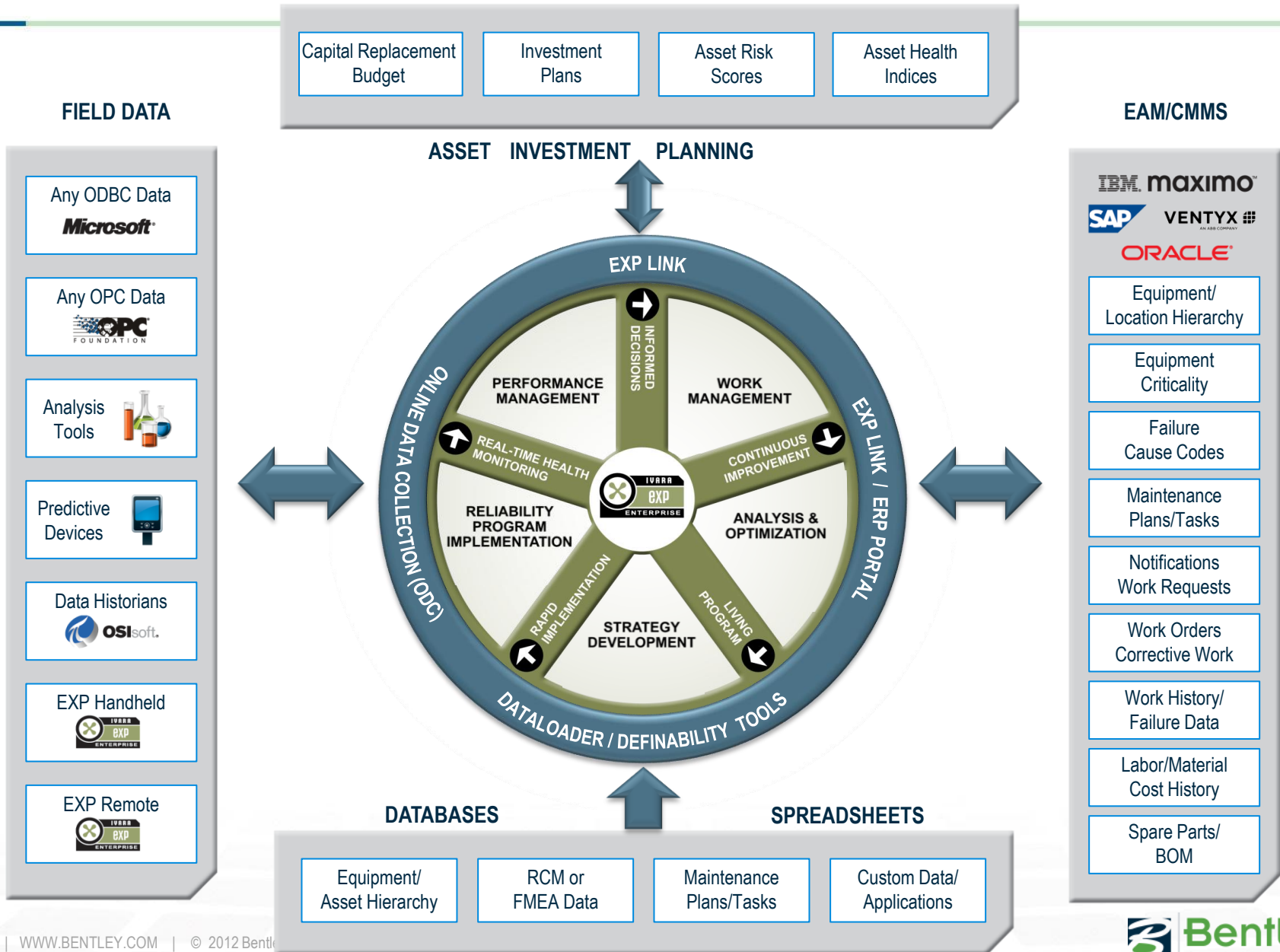


# Why Asset Performance Management is important



Adapted from DPR Consulting and  
Dr. Martin Fischer, CIFE IAB, 2011

# Asset Intelligence from Consolidated Data Sources



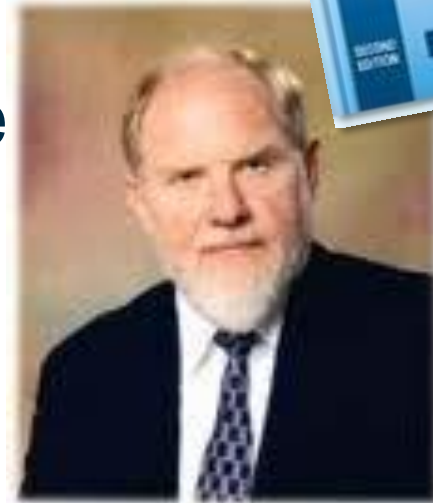
# Asset Performance Management (APM)

- An asset management program comprising
  - **Reliability** programs for **operational assets**
  - Ongoing **performance monitoring**
  - Ongoing **performance improvement** program
- Implementing APM program includes
  - An APM **strategy**
  - Reliability and performance **extensions** to **Asset Register**
  - Integration with **work management**
  - **Analytics, KPIs, dashboards, monitoring**



# What is RCM2 ?

- An established and respected process within the maintenance community
- Frames what must be done to ensure a physical asset, system or process meets performance objectives
- Ivara owns the intellectual property for RCM2



John Moubray

# Ivara Users

## Electric Utilities



## Metals/Mining



## Oil/Gas Chemical



# Summary

---

- AssetWise provides superior asset lifecycle information management for owner-operators with highly engineered assets.
- AssetWise improves engineering information management integrity and operational efficiency while streamlining the business processes associated with sustaining infrastructure assets over their lifecycles.
- AssetWise provides maximized availability and asset utilization, reduced operational costs, and compliance with safety, environmental, and other regulations

