



ProjectWise & SharePoint

Arne Mortensen 10 Nov. 2009

3 Platforme

- Microsoft Sharepoint Server 2007
 - + Knows about users - Cost money
- Microsoft SharePoint Service 2007
 - + Free of charge - Don't know about users
- Internet Information Service 6.0
 - + Included with OS + knows about users - Oldfashion - hard to customize

What is Microsoft SharePoint?

- – Microsoft Office platform for building Web-based
- business applications
- – Provide all users with:
 - • Rich Collaboration Environment
 - • File access control using check-in/check-out functions
 - • Version control
 - • Fast finding through powerful search features
 - • Simple Access control (Single Sign On)
 - • Calendars and Threaded Discussions
 - • Simple project Web site and user-level customization

Exsempel SharePoint Page

The screenshot shows a Microsoft Office Online page. At the top right, it says 'United States (change) | All Microsoft Sites'. The main header includes the Microsoft Office Online logo and a navigation bar with links for Home, Products, Help and How-to, Downloads, Clip Art, Templates, and Microsoft Office Live. A search bar is present with the text 'Search Windows SharePoint Services 2.0'. Below the navigation, there are three main sections: a search bar for Windows SharePoint Services, a 'Job Hunting?' advertisement for resume templates powered by monster.com, and a 'Check for free updates' button. The main content area is titled 'Windows SharePoint Services' and features a breadcrumb trail: 'Home > Products > Windows SharePoint Services > Windows SharePoint Services 2.0 Help and How-to > Training'. The page title is 'Customizing a SharePoint site in your Web browser, Part 1'. Below the title, it says 'Applies to: Microsoft Windows SharePoint Services 2.0'. There are links for 'Email this link', 'Printer-Friendly Version', and 'Share'. A left sidebar contains a 'Technology Information' section with links like 'Overview', 'Top 10 Benefits', and 'Compare Features', and a 'Help and How-to' section with links like 'Windows SharePoint Services 3.0 Help' and 'Windows SharePoint Services 2.0 Help'. A 'See Also' section on the right lists related articles: 'Changing the graphics on the home page of a SharePoint site' and 'Customizing a SharePoint site in your Web browser, Part 2'. At the bottom right, the Bentley logo is visible.

ProjectWise Web Clients

Problem statements

- Fully functional web interface based client needed to enable:
 - Accessing ProjectWise content without requiring to have any software preinstalled on client machine
 - Ability to create and modify ProjectWise content using web interface
- Organizations with lots of casual read-only users can't justify cost of passport:
 - Read-only type of access needed without requiring to have passport
 - Un-limited number of users (only limited by technical scalability of software) supported

ProjectWise Web Clients Goals

- Provide a replacement for existing ProjectWise Web Explorer Lite
 - Web Explorer Lite (WEL) is not delivered with V8i
- Support either SharePoint 2007 or stand-alone IIS environments
- Provide a platform for customization
- Provide read-only web interface

ProjectWise Web Clients

- ProjectWise Web Server
 - Read-write type of actions allowed
 - Right to run license required
 - Passport required
- ProjectWise Web View server
 - Allows users read-only access to the PW system
 - Editing operations not permitted
 - Server Right To Run license required only (no Passport required)

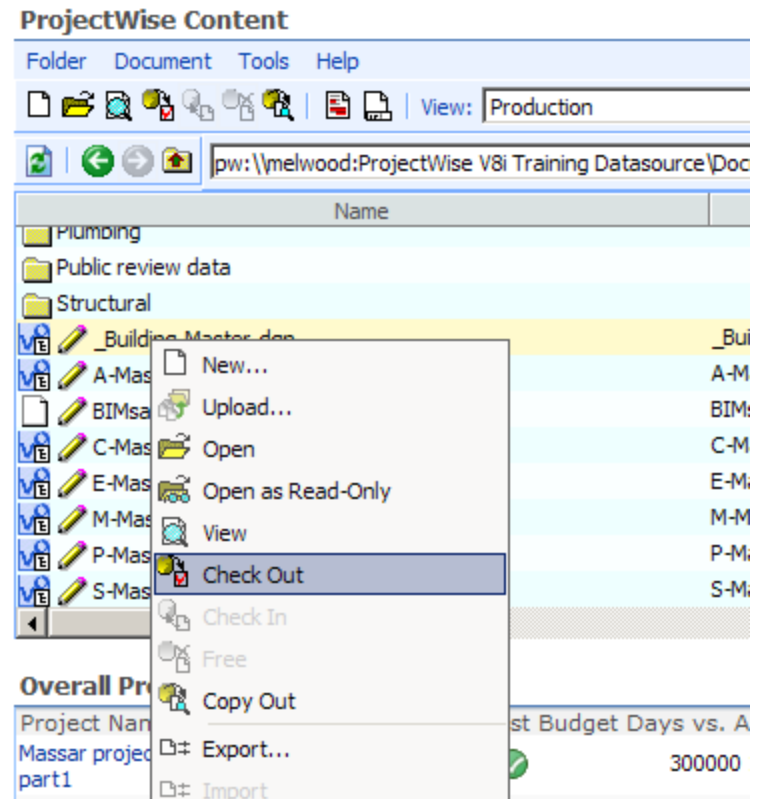
ProjectWise Web Server

ProjectWise Web Server Capabilities

- Check out/in
- Document/Folder creation/deletion
- Multi-document operations
- Export/Send to Folder
- Component Display/Navigation
- Short-cuts to documents/folders(URLs).
- CAD files viewing
- Design Compare

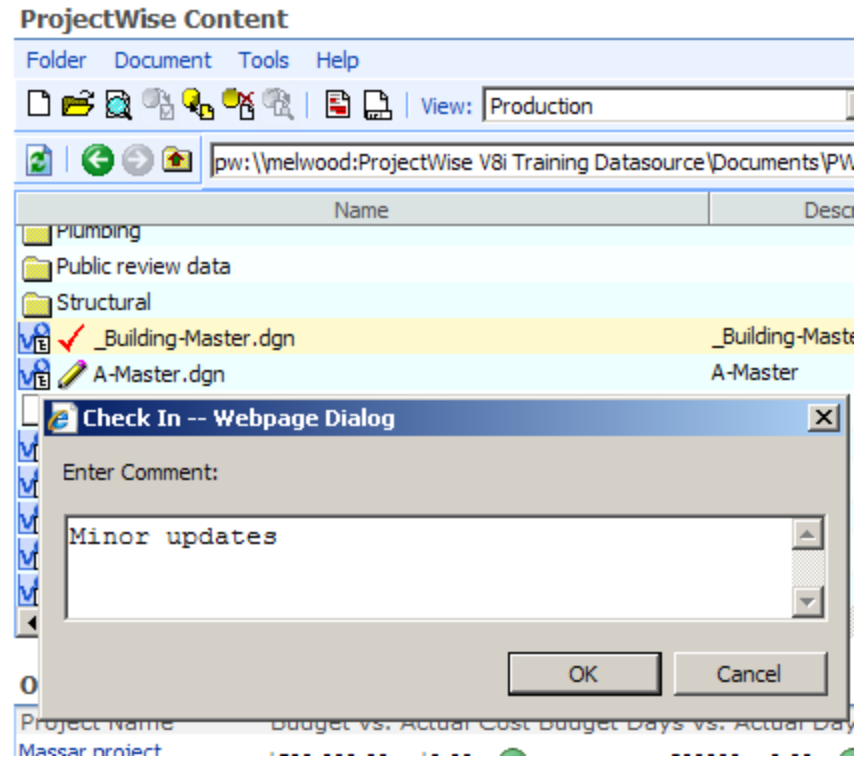
Web Server – Check out\in

- Allows checking out a file from web interface
- Enables users to work exclusively on a file from a remote location\connection
- CAD files are checked out with correct reference files



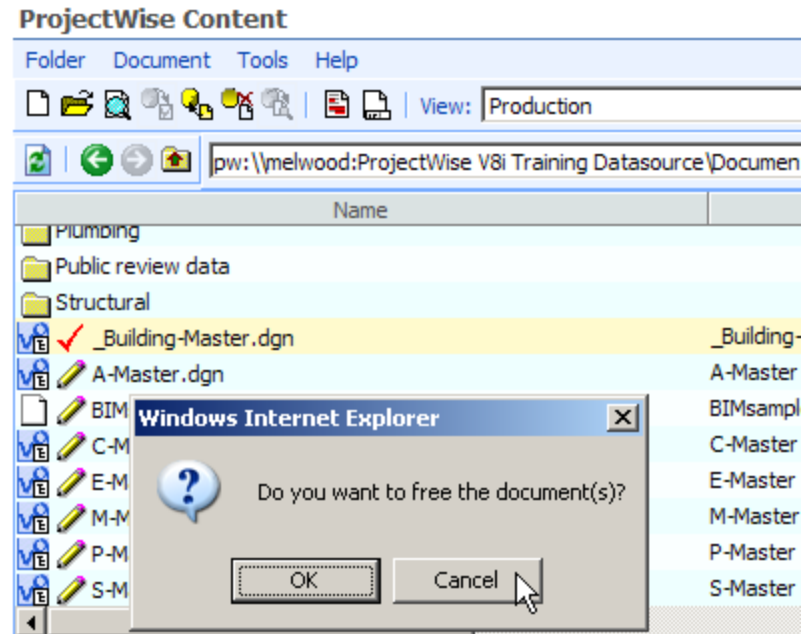
Web Server– Check in

- Allows checking in a file from the web interface
- Enable users editing files\create new files from an external connection\location



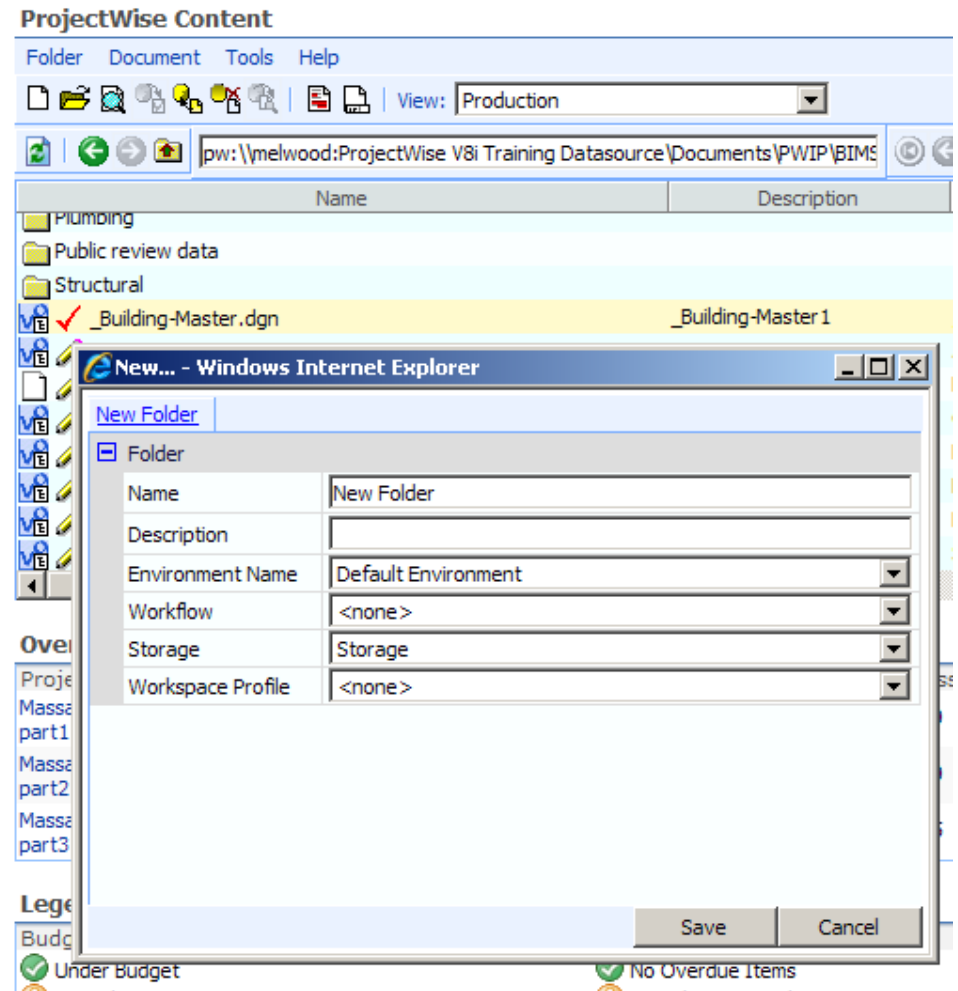
Web Server– Free

- Document editor is allowed to free checked out file, preserving the integrity of the server copy
- Administrator is allowed to free documents checked out by other users.



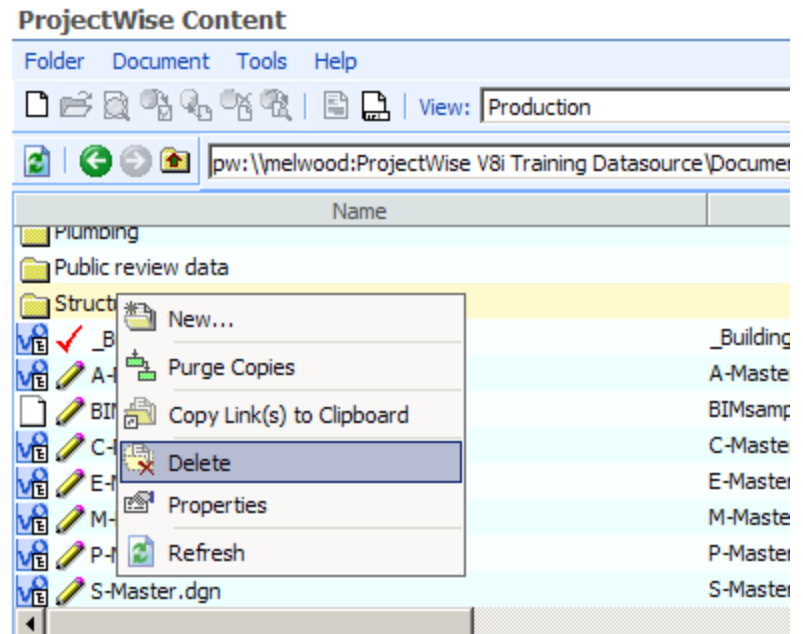
Web Server –Folder creation

- Allows creating new folders from the web interface
- Enables organizing datasource content from a remote location



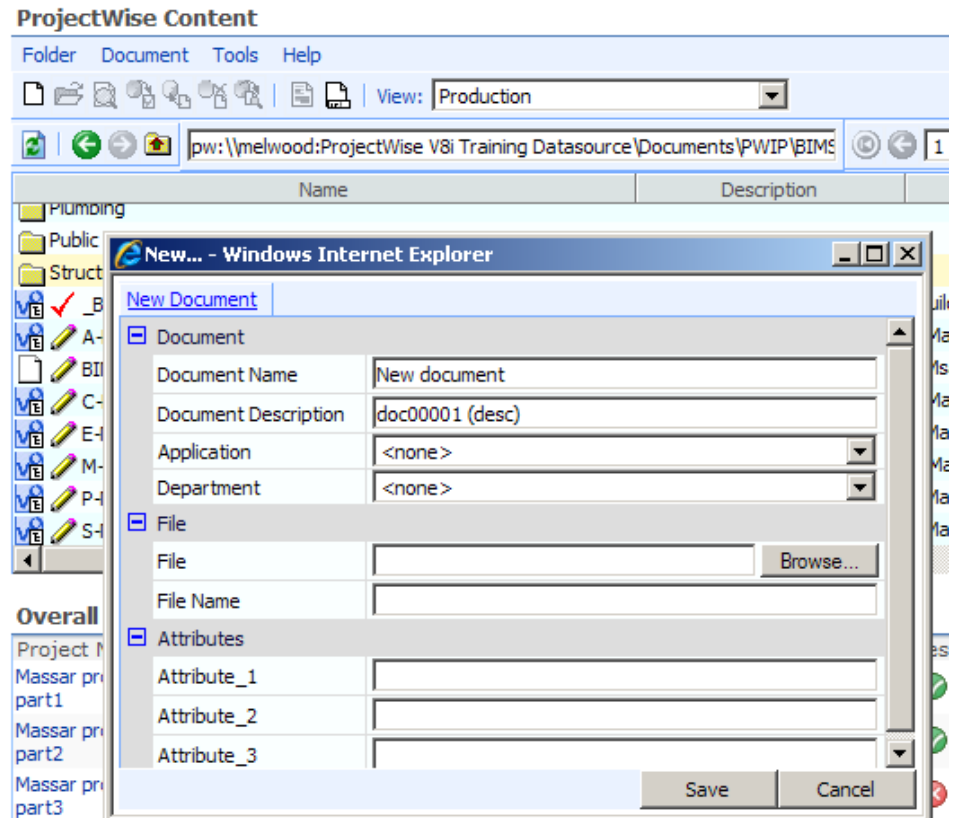
Web Server – Folder deletion

- Allows deleting folder from the Web Parts GUI
- Only empty folders are allowed to delete



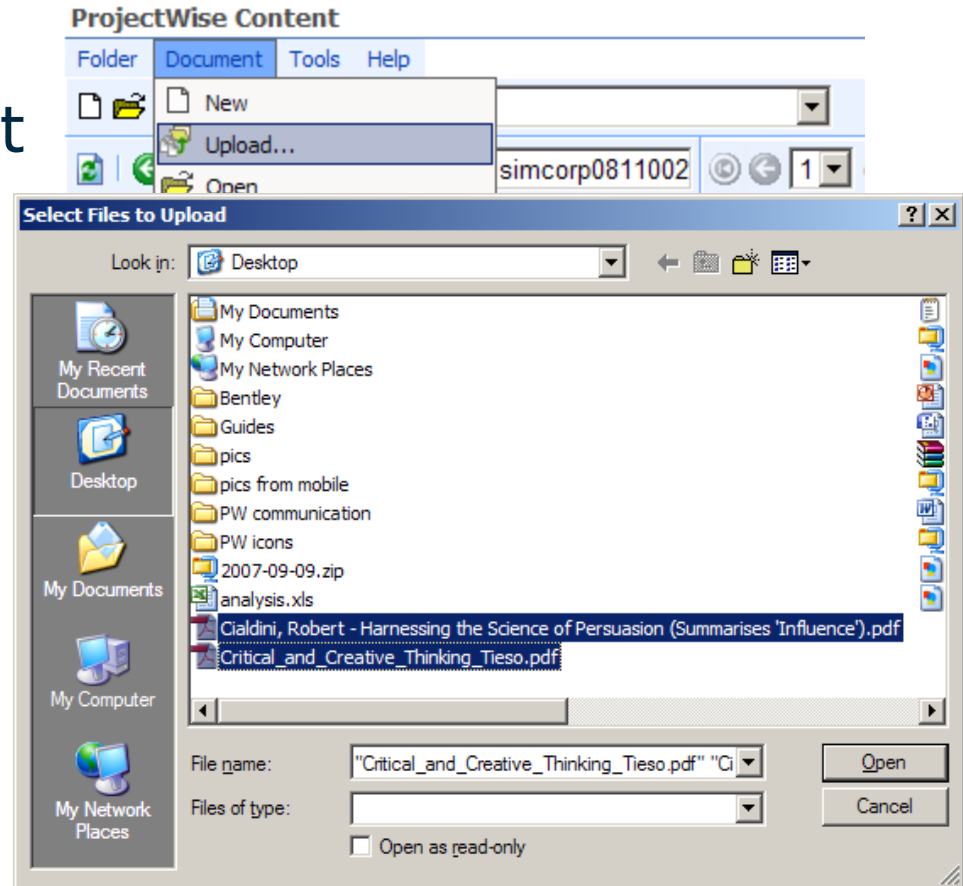
Web Server – Document creation

- Allows creating new documents from the Web Parts GUI
- Enables adding content from a remote location



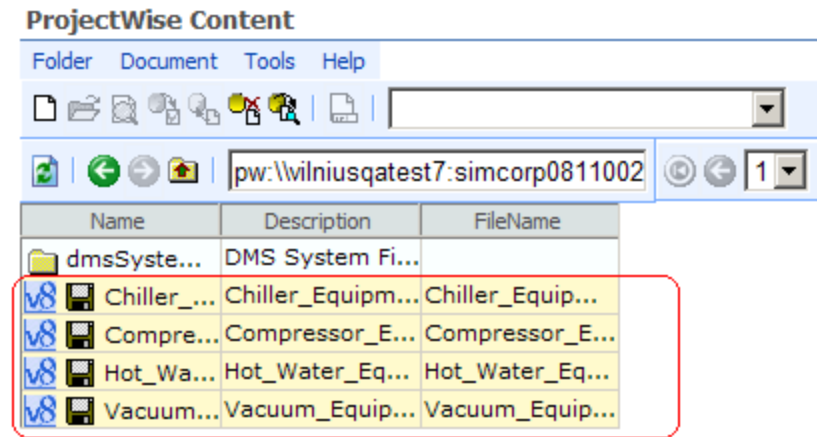
Web Server – Multi-file upload

- Allows uploading multiple documents at once
- Improves multiple documents handling efficiency



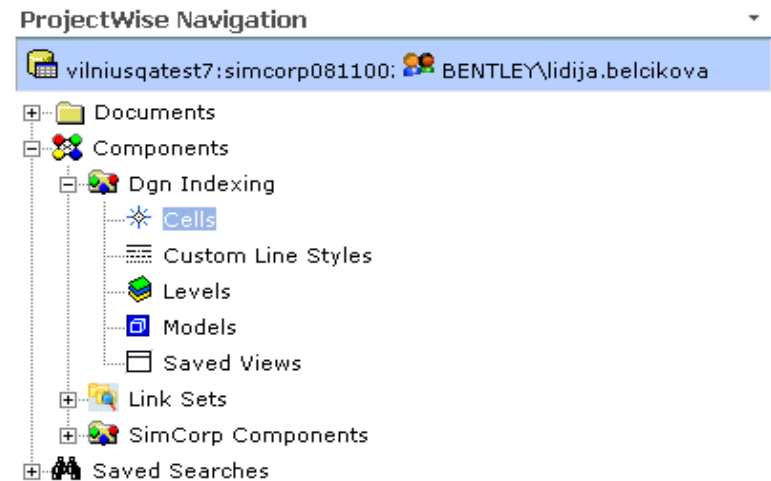
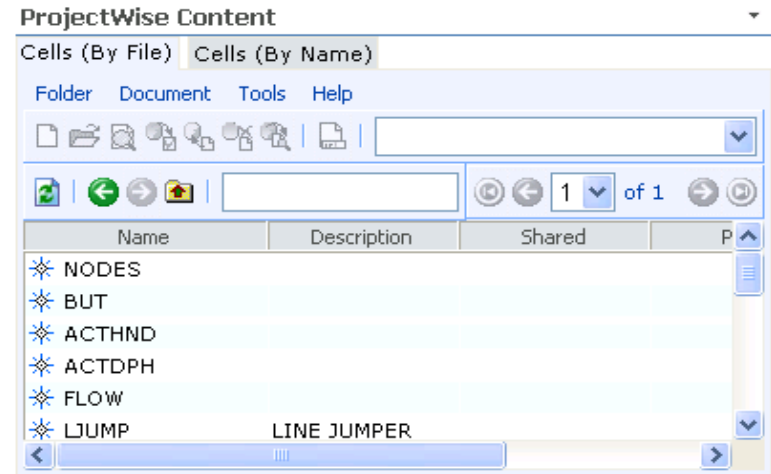
Web Server – Export/Send to Folder

- Allows user to export a file from the Web Parts GUI
- Enables to work on the document off-line without having anyone else make changes to it.



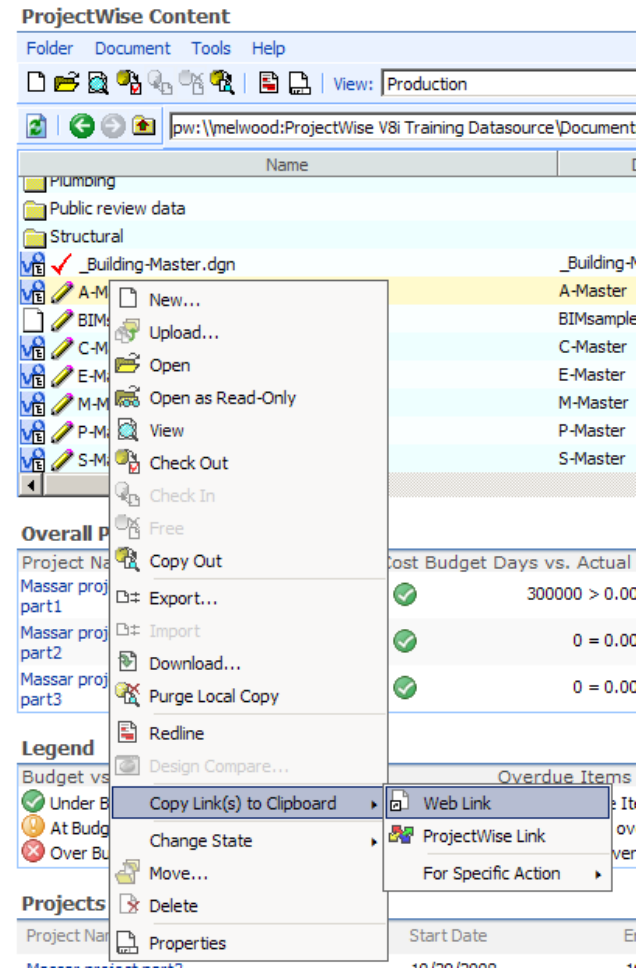
Web Server – Component Display/Navigation

- Displays ProjectWise components
- Enables external users navigating components



Web Server – document/folder links

- Allows creating link to some document or folder
- Enables referencing folders/documents from emails, SharePoint sites, etc.
- Combines site URL with PW moniker
- URL and URN type of links supported



Web Server – “Action Link(s)”

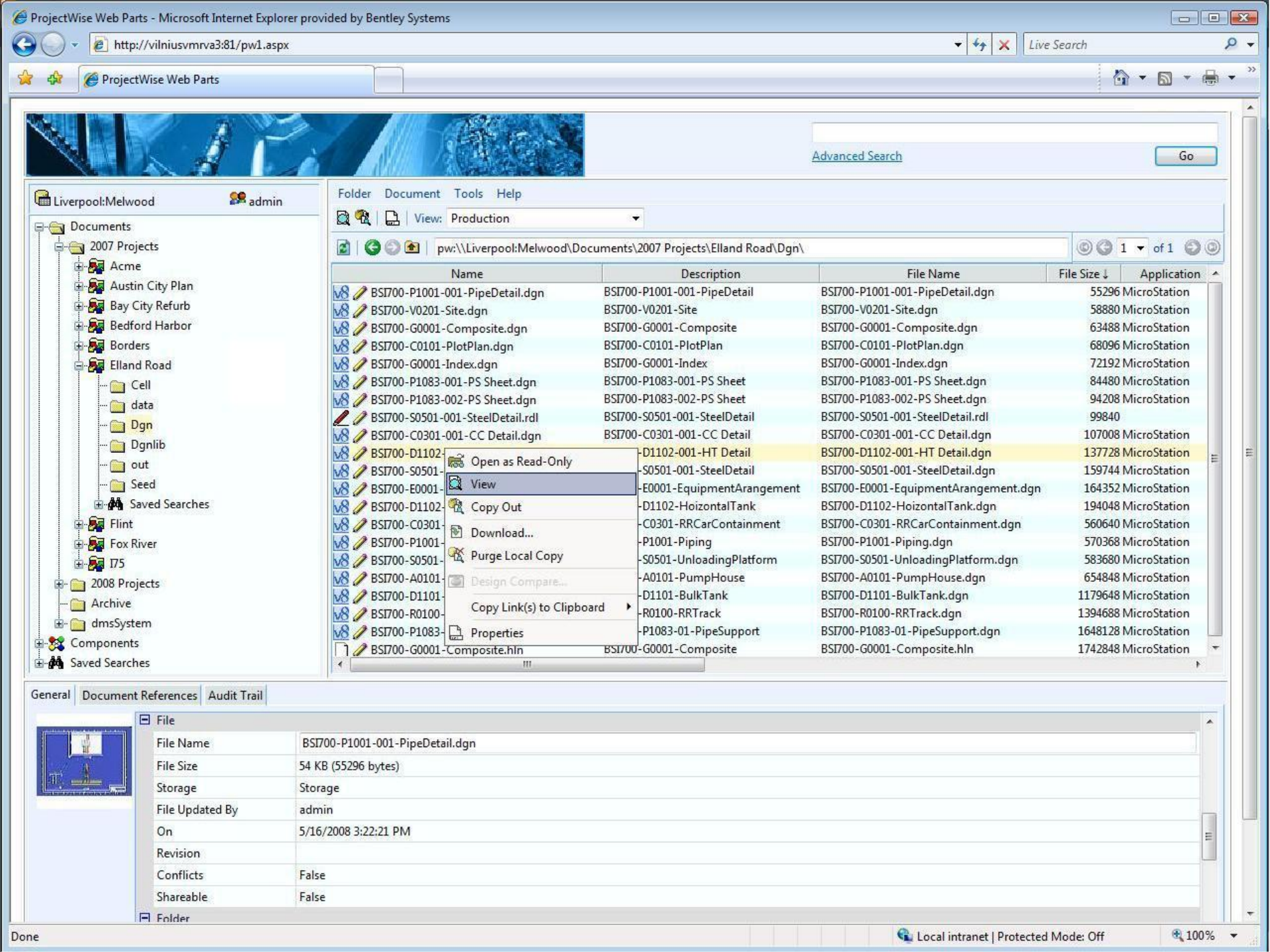
- Creates hyperlink to document with embedded action (View, Redline, Open, Open as read-only) information
- Clicking on such link automatically executes the action
- Combines site URL with ProjectWise moniker and requested action

The screenshot shows the ProjectWise Content browser interface. The main window displays a list of files and folders. A context menu is open over the file '_Building-Master.dgn'. The menu items are:

- New...
- Upload...
- Open
- Open as Read-Only
- View
- Check Out
- Check In
- Free
- Copy Out
- Export...
- Import
- Download...
- Purge Local Copy
- Redline
- Design Compare...
- Copy Link(s) to Clipboard
 - Web Link
 - ProjectWise Link
 - For Specific Action
 - Open
 - Open as Read-Only
 - View
 - Redline
- Change State
- Move...
- Delete
- Properties

The background shows a table with columns for Name and Description. The table lists various master files (A-Master, BIMsampleUS, C-Master, E-Master, M-Master, P-Master, S-Master) and their corresponding descriptions.

ProjectWise Web View Server



Advanced Search

Liverpool:Melwood admin

Documents

- 2007 Projects
 - Acme
 - Austin City Plan
 - Bay City Refurb
 - Bedford Harbor
 - Borders
 - Elland Road
 - Cell
 - data
 - Dgn
 - Dgnlib
 - out
 - Seed
 - Saved Searches
- 2008 Projects
 - Archive
 - dmsSystem
- Components
- Saved Searches

Name	Description	File Name	File Size ↓	Application
BSI700-P1001-001-PipeDetail.dgn	BSI700-P1001-001-PipeDetail	BSI700-P1001-001-PipeDetail.dgn	55296	MicroStation
BSI700-V0201-Site.dgn	BSI700-V0201-Site	BSI700-V0201-Site.dgn	58880	MicroStation
BSI700-G0001-Composite.dgn	BSI700-G0001-Composite	BSI700-G0001-Composite.dgn	63488	MicroStation
BSI700-C0101-PlotPlan.dgn	BSI700-C0101-PlotPlan	BSI700-C0101-PlotPlan.dgn	68096	MicroStation
BSI700-G0001-Index.dgn	BSI700-G0001-Index	BSI700-G0001-Index.dgn	72192	MicroStation
BSI700-P1083-001-PS Sheet.dgn	BSI700-P1083-001-PS Sheet	BSI700-P1083-001-PS Sheet.dgn	84480	MicroStation
BSI700-P1083-002-PS Sheet.dgn	BSI700-P1083-002-PS Sheet	BSI700-P1083-002-PS Sheet.dgn	94208	MicroStation
BSI700-S0501-001-SteelDetail.rdl	BSI700-S0501-001-SteelDetail	BSI700-S0501-001-SteelDetail.rdl	99840	
BSI700-C0301-001-CC Detail.dgn	BSI700-C0301-001-CC Detail	BSI700-C0301-001-CC Detail.dgn	107008	MicroStation
BSI700-D1102-001-HT Detail.dgn	BSI700-D1102-001-HT Detail	BSI700-D1102-001-HT Detail.dgn	137728	MicroStation
BSI700-S0501-001-SteelDetail.dgn	BSI700-S0501-001-SteelDetail	BSI700-S0501-001-SteelDetail.dgn	159744	MicroStation
BSI700-E0001-EquipmentArrangement.dgn	BSI700-E0001-EquipmentArrangement	BSI700-E0001-EquipmentArrangement.dgn	164352	MicroStation
BSI700-D1102-001-HorizontalTank.dgn	BSI700-D1102-001-HorizontalTank	BSI700-D1102-001-HorizontalTank.dgn	194048	MicroStation
BSI700-C0301-RRCarContainment.dgn	BSI700-C0301-RRCarContainment	BSI700-C0301-RRCarContainment.dgn	560640	MicroStation
BSI700-P1001-Piping.dgn	BSI700-P1001-Piping	BSI700-P1001-Piping.dgn	570368	MicroStation
BSI700-S0501-UnloadingPlatform.dgn	BSI700-S0501-UnloadingPlatform	BSI700-S0501-UnloadingPlatform.dgn	583680	MicroStation
BSI700-A0101-PumpHouse.dgn	BSI700-A0101-PumpHouse	BSI700-A0101-PumpHouse.dgn	654848	MicroStation
BSI700-D1101-BulkTank.dgn	BSI700-D1101-BulkTank	BSI700-D1101-BulkTank.dgn	1179648	MicroStation
BSI700-R0100-RRTrack.dgn	BSI700-R0100-RRTrack	BSI700-R0100-RRTrack.dgn	1394688	MicroStation
BSI700-P1083-01-PipeSupport.dgn	BSI700-P1083-01-PipeSupport	BSI700-P1083-01-PipeSupport.dgn	1648128	MicroStation
BSI700-G0001-Composite.hln	BSI700-G0001-Composite	BSI700-G0001-Composite.hln	1742848	MicroStation

General Document References Audit Trail

File

File Name	BSI700-P1001-001-PipeDetail.dgn
File Size	54 KB (55296 bytes)
Storage	Storage
File Updated By	admin
On	5/16/2008 3:22:21 PM
Revision	
Conflicts	False
Shareable	False

Folder

Web View Server

- ProjectWise Web View Server provides with web access to view ProjectWise managed content.
- Makes it easy for any number of connected users to access and view work in a read-only mode using Internet Explorer.
- As the access is likely to be infrequent, and will always be to consume rather than produce/collaborate on ProjectWise managed content, there will be no requirement for a user to possess a ProjectWise Passport.

Web View Server

- Leverages the same web parts (as Web Server) limited to read-only actions
- Supported both SharePoint as well as stand-alone IIS environments
- Requires a server Right to Run license. Does not require Passport for client access
- Requires PW Publishing Server for viewing of DGN/DWG data
- Deployment of both read-only and read/write sites on same physical server machine is supported

Miscellaneous

Spatial Web Part

Welcome Rimantas Varanavicius | [This Site](#)

Sample site

Home

View All Site Content

Documents

Lists

Discussions

Sites

People and Groups

Recycle Bin

ProjectWise Content

Folder Document Tools Help


View: [dropdown]

Address: jpw:\viniusqatest30:PW08110213\Documents\MicroStation V8 X

Name	Description	File Name
Building	Example Building Project	
Civil	Example Civil Project	
General	Example Project	
Geospatial	Example Geospatial Project	
Plant	Example Plant Project	

ProjectWise Spatial Content

View



ProjectWise Navigation

viniusqatest30:PW08110213 BENTLEY|Rimantas.Varanavicius

- Documents
 - _RP
 - 22
 - Background maps data
 - egos
 - MicroStation J
 - MicroStation V8
 - MicroStation V8 XM Edition
 - TR
- Components
- Saved Searches