

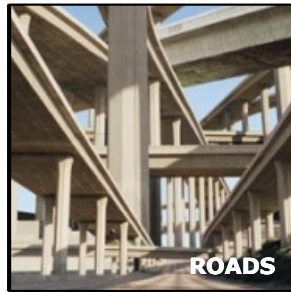
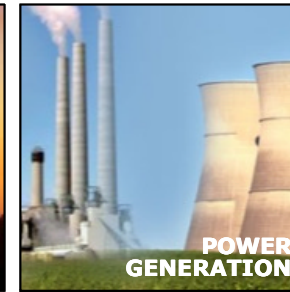


W8i

Bentley Water & Wastewater Solutions: Design Workflow Automation

Slavco Velickov, PhD
Water Industry Director, EMEA

Solutions



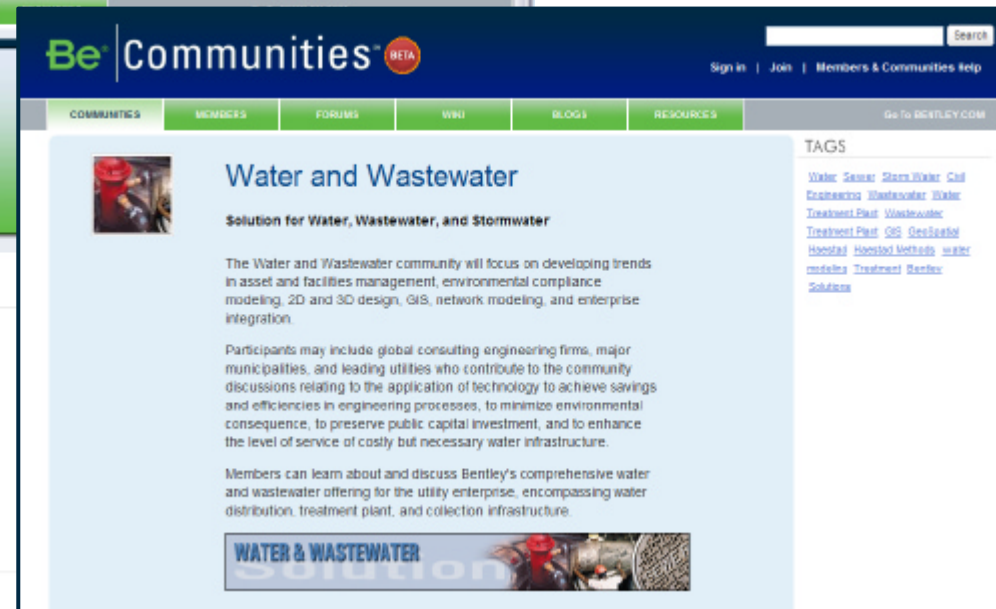
V8i

Bentley Solutions

- Intra-operable infrastructure software portfolio
 - Multi-discipline built on a common V8i platform
 - Supports the Design-Build-Operate lifecycle
 - Encompasses the full spectrum of infrastructure
- Professional services and learning
 - Support for implementation and all change issues
- Professional communities networking
 - Local and global communication opportunities



Be Communities: Water and Wastewater Professional Networking



Water and Wastewater Industry Challenges

Regulatory Compliance

- Adequate Supply and Treatment capacity
- Protecting Water Quality
- Business performance

Reliability

- Consistently achieving target levels of services
- Maintaining aging infrastructure
- Avoiding failure

Financial performance

- Reducing costs while improving services
- Asset investment planning for aging infrastructure
- Aging workforce



Water and Wastewater Lifecycle



Bentley provides applications across the entire lifecycle

Water and Wastewater Product Map

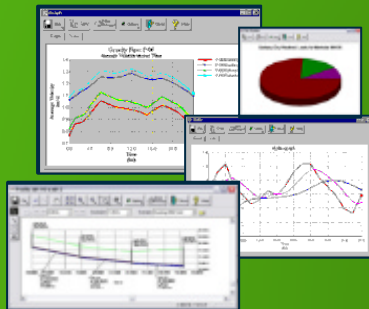
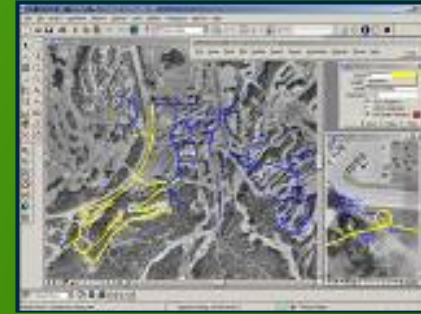


Potable Water Distribution and Transmission

- WaterCAD
- WaterGEMS
- HAMMER
- Bentley Water
- Bentley Geo Web Publisher
- Bentley Expert Designer Water
- Bentley PowerMap Field

Mapping and Publishing

- Bentley Map
- Bentley Cadastre
- Bentley I/RAS B
- Bentley Descartes
- Bentley CADscript
- Bentley Geospatial Server
- Bentley Onsite
- Bentley PowerMap Field
- Bentley Geo Web Publisher



Wastewater Collection

- SewerCAD
- SewerGEMS
- Bentley Geo Web Publisher
- Bentley PowerMap Field
- Bentley Map

Storm Systems

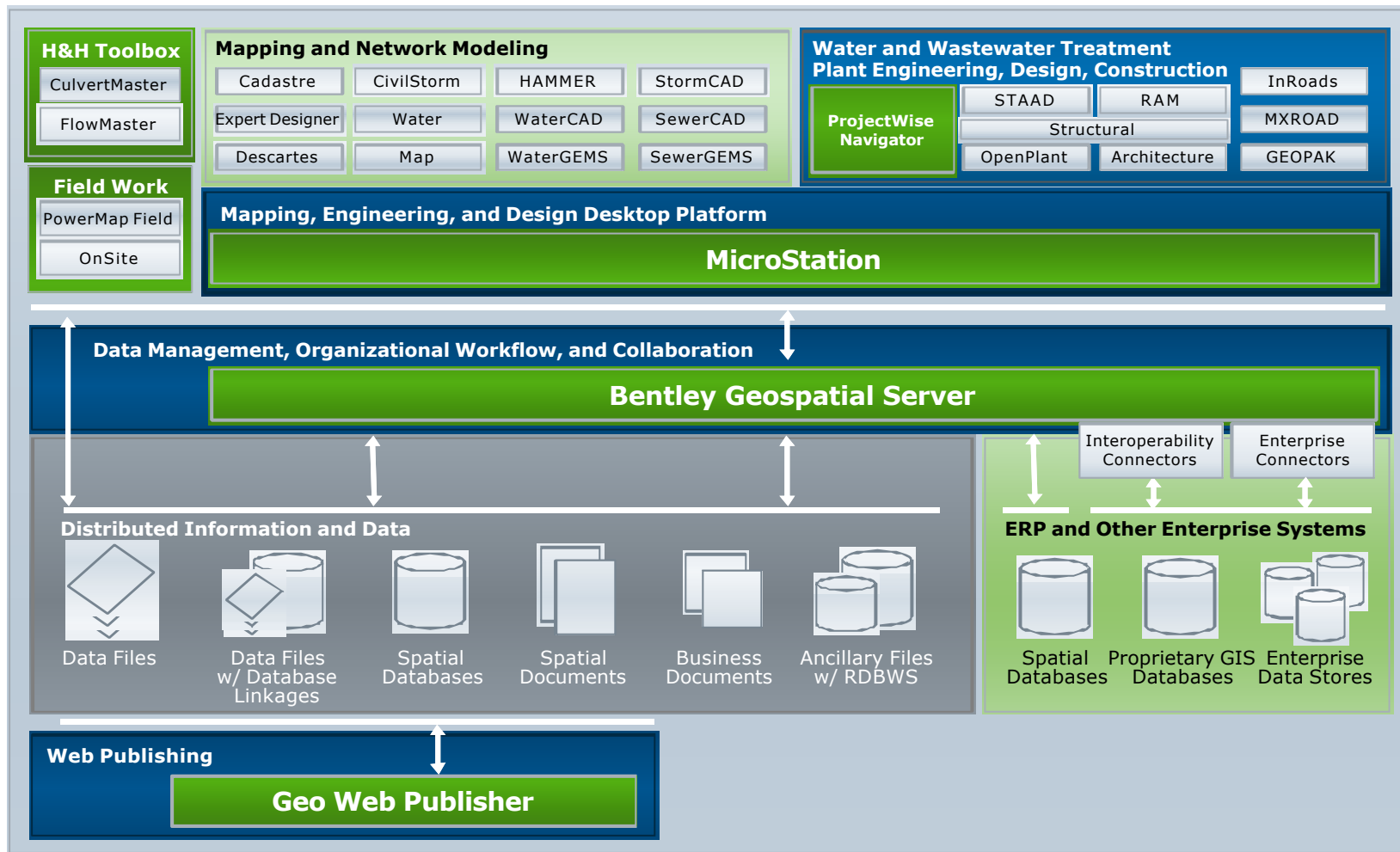
- StormCAD
- CivilStorm
- InRoads Storm and Sanitary
- CulvertMaster
- PondPack
- FlowMaster
- Bentley PowerCivil
- MXROAD Suite
- GEOPAK Site Suite



Water and Wastewater Treatment Plants

- Bentley PLantSpace
- AutoPLANT
- OpenPlant PowerPID
- ProjectWise Navigator
- Bentley PowerCivil
- InRoads Site Suite
- GEOPAK Site
- MXROAD Suite
- Bentley Architecture
- Bentley Structural
- RAM
- STAAD.Pro

Water, Wastewater, and Storm



Water and Wastewater Solution V8i

WaterGEMS delivers advanced functionality for GIS and model synchronization

Bentley Water includes enhanced reports, queries, multi-workflows and enterprise stores

WaterGEMS and **HAMMER** feature native support for Oracle spatial data model

WaterGEMS advances leakage calibration for locating leaks and quantifying background water losses

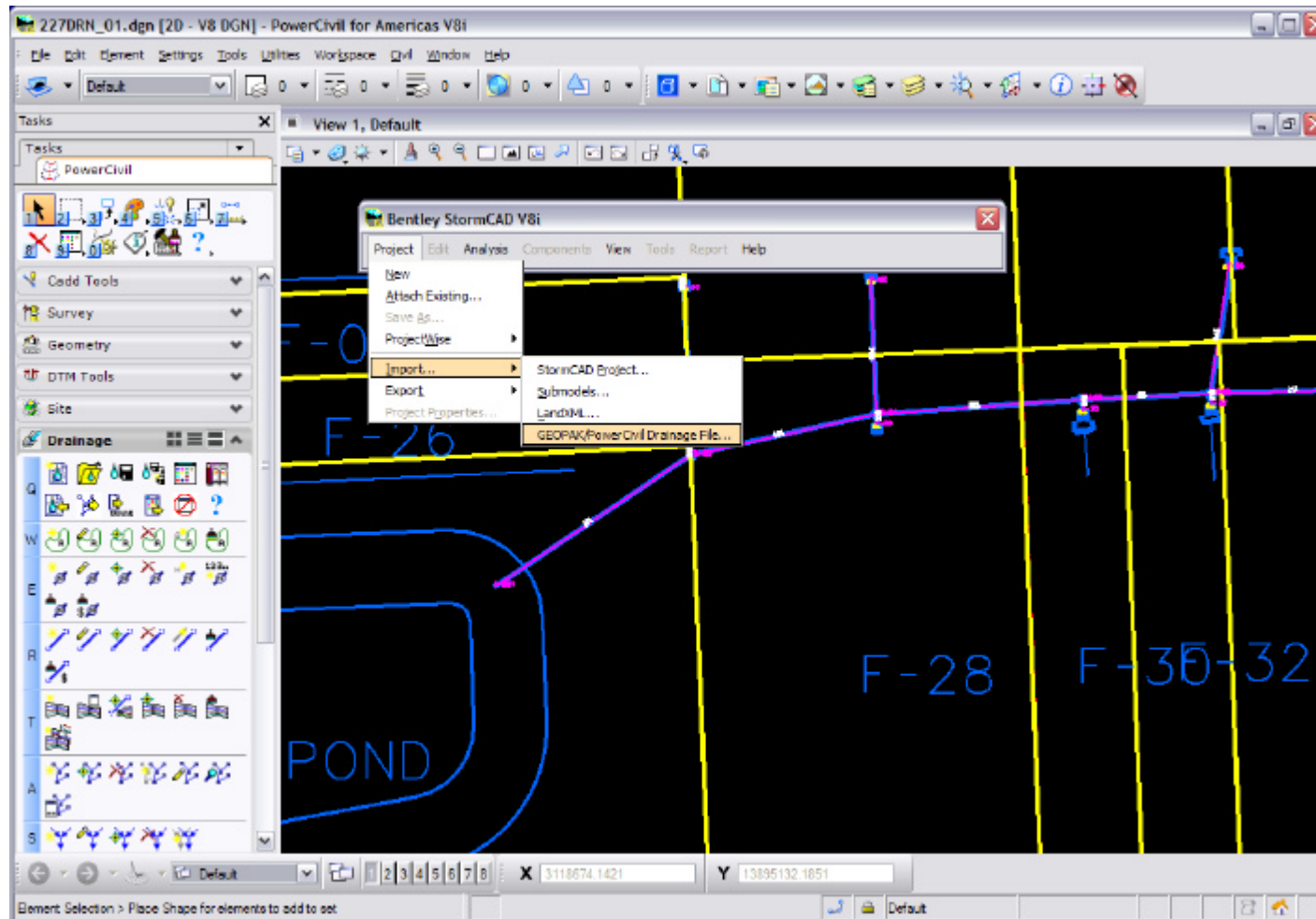
ProjectWise features significant performance improvements and linear reference system-based storage



StormCAD features seamless integration with GEOPAK and Bentley PowerCivil

Bentley Expert Designer Water supports high productivity design and dynamic cost estimating for potable water networks

Bentley Civil and Haestad Integration



Available now:

- **StormCAD <-> GEOPAK:** Import and export GEOPAK drainage project in StormCAD
- **StormCAD <-> PowerCivil V8i:** Import and export PowerCivil Drainage project in StormCAD
- **StormCAD <-> InRoads:** Import and export InRoads Storm & Sanitary projects in StormCAD
- **StormCAD <-> MXRoad:** Import and export Land XML files. 3D visualisation
- **PondPack <-> InRoads:** Import InRoads pond definitions into PondPack

Coming soon:

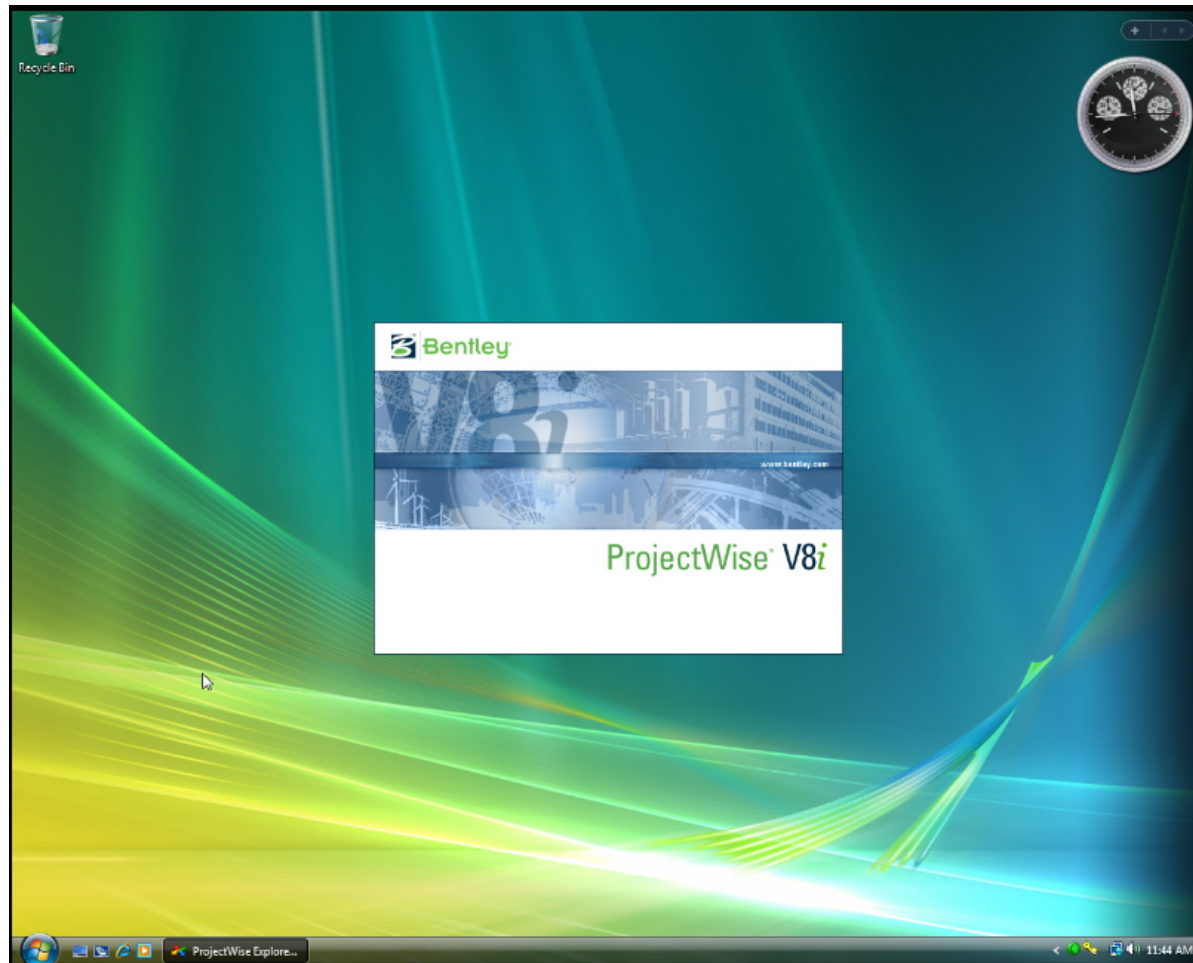
Early 2010

- **CivilStorm <-> InRoads**: Import and export InRoads Storm & Sanitary projects in CivilStorm

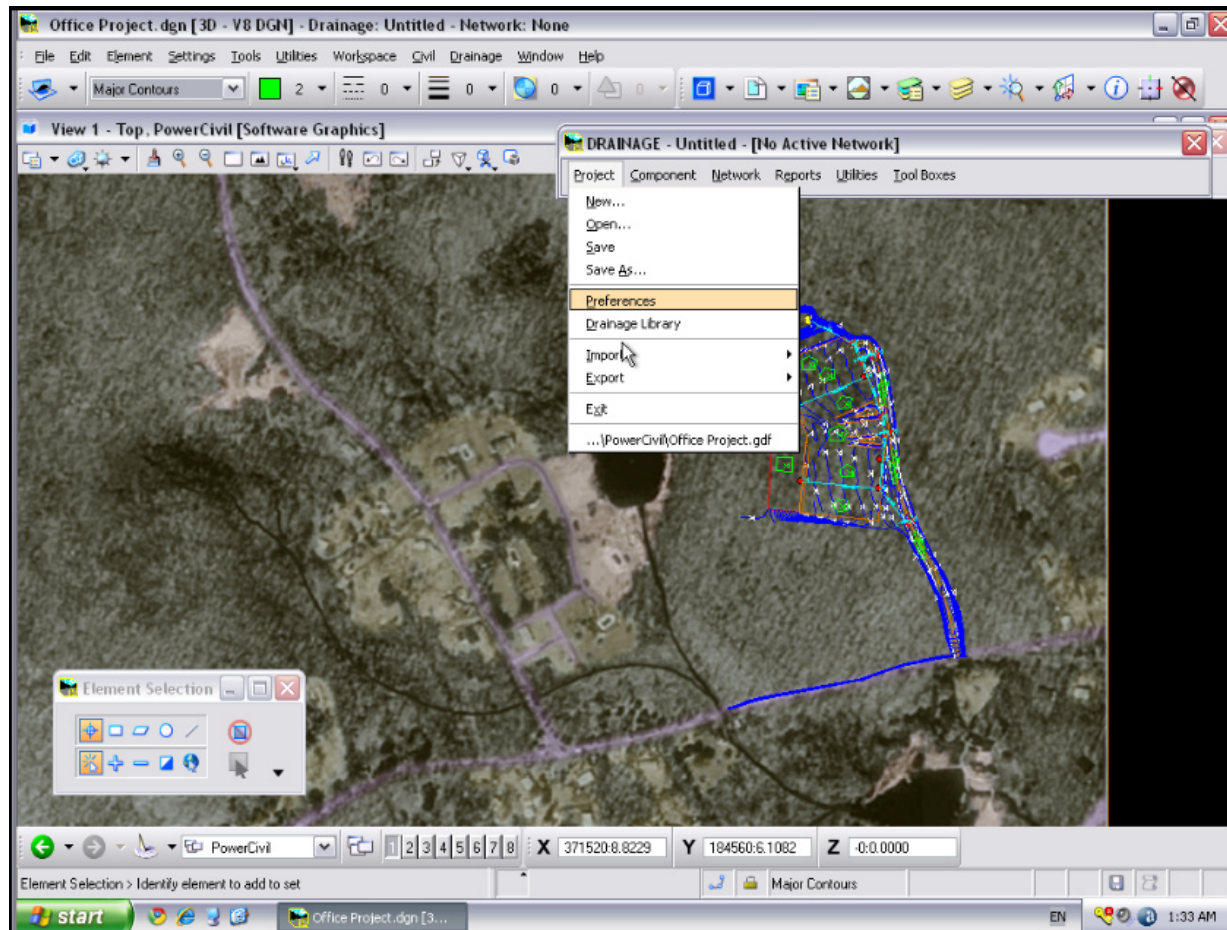
The future

- Full integration - Hydraulics & Hydrology calculations in Bentley Civil applications will be performed by 'Haestad' solvers.
- Users will move directly from StormCAD/CivilStorm/PondPack to their Bentley Civil application and back.
- Potential to support 'Haestad' water and sanitary sewer solvers in Bentley Civil applications as well

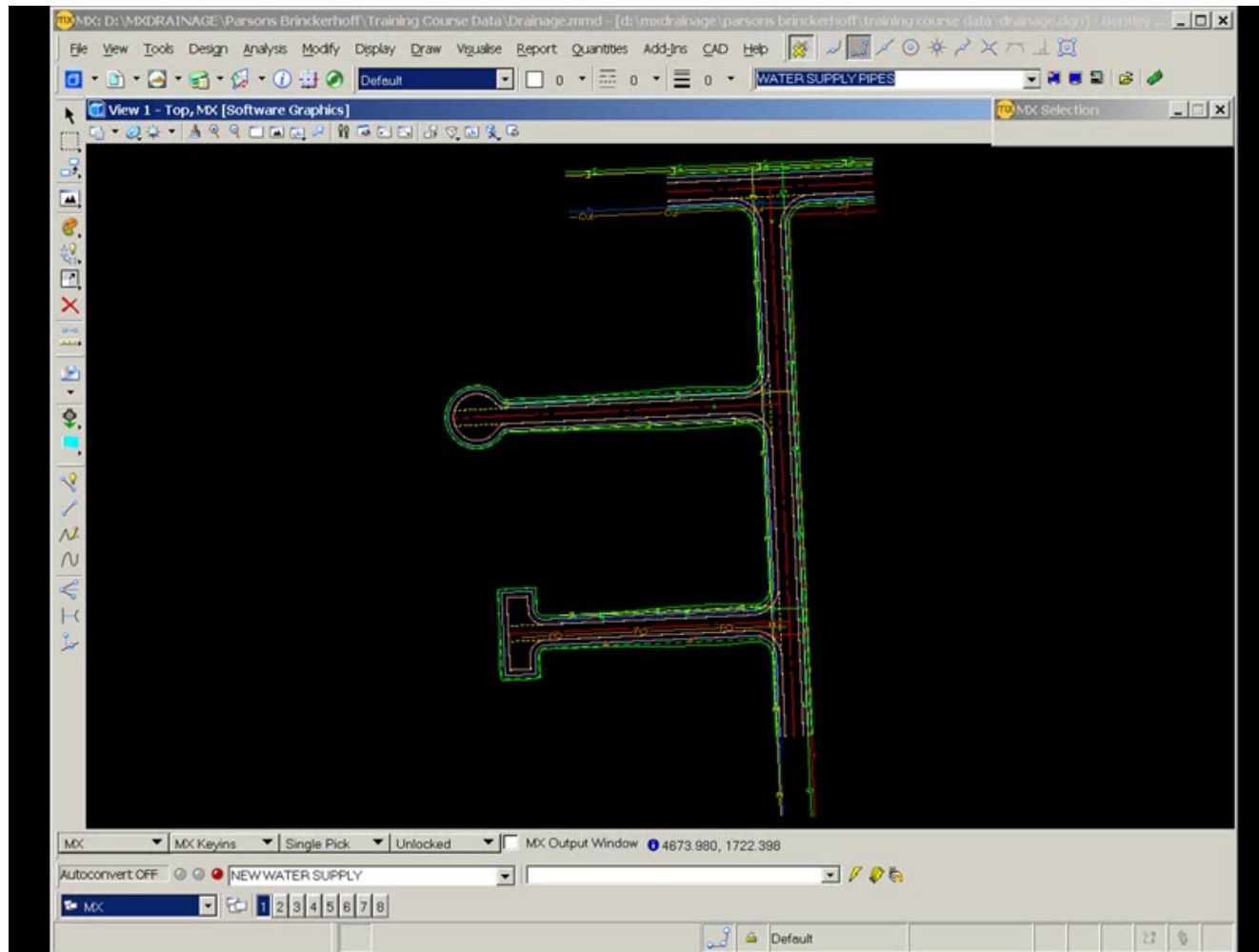
AVI: Geo-coordinated modeling using Bentley WaterGEMS V8i & Google Earth



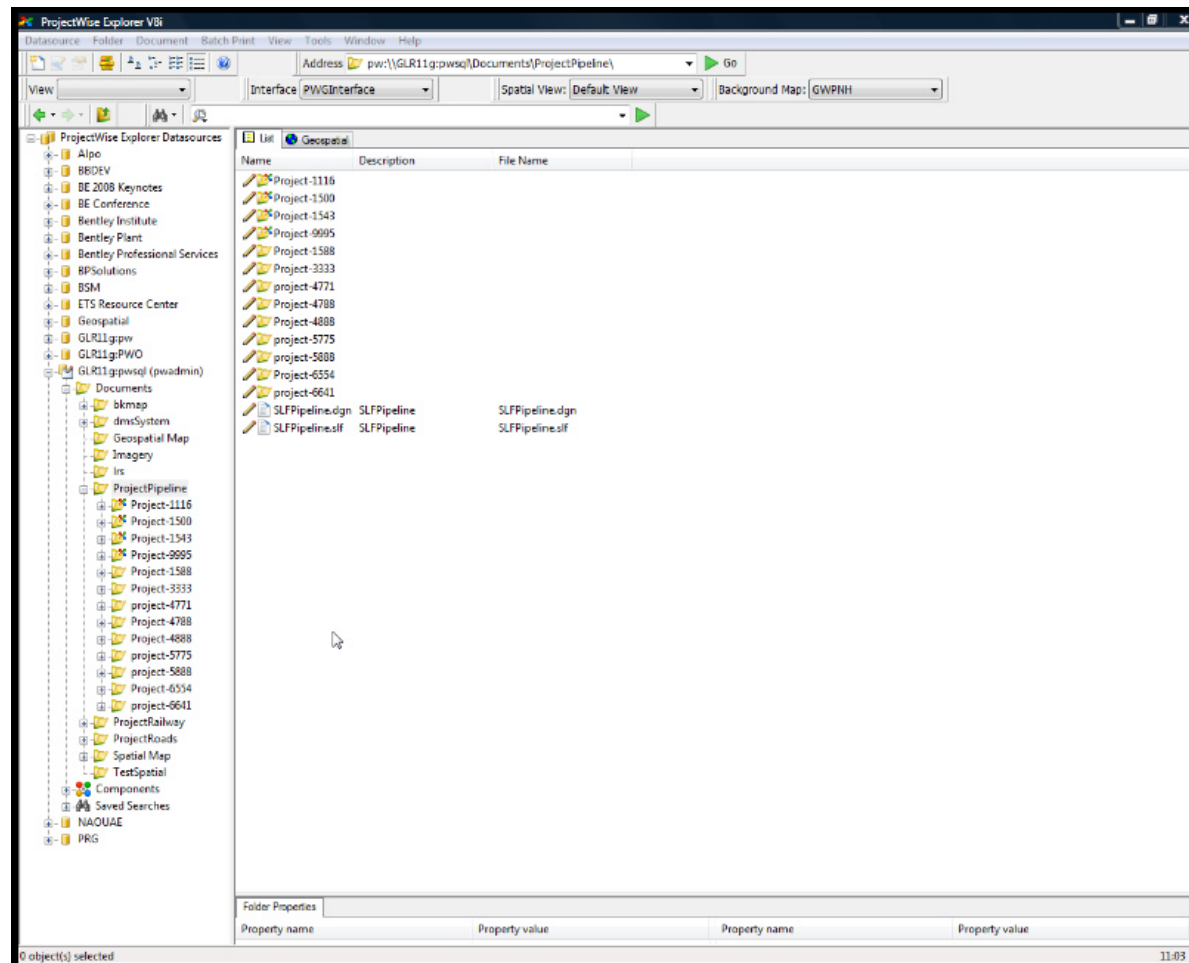
AVI: StormCAD V8i and PowerCivil single DGN workflow



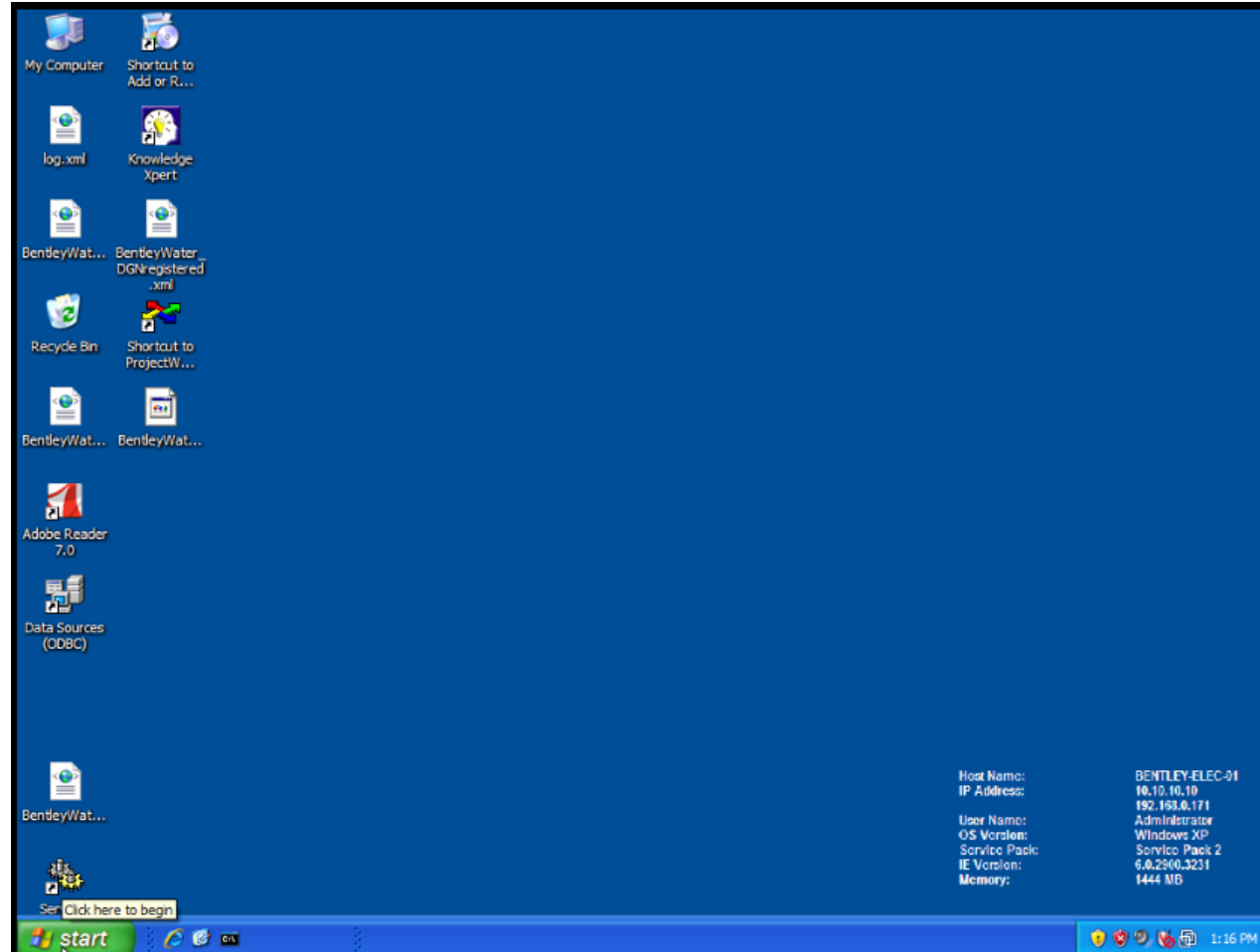
AVI: StormCAD V8i and MX workflow integration



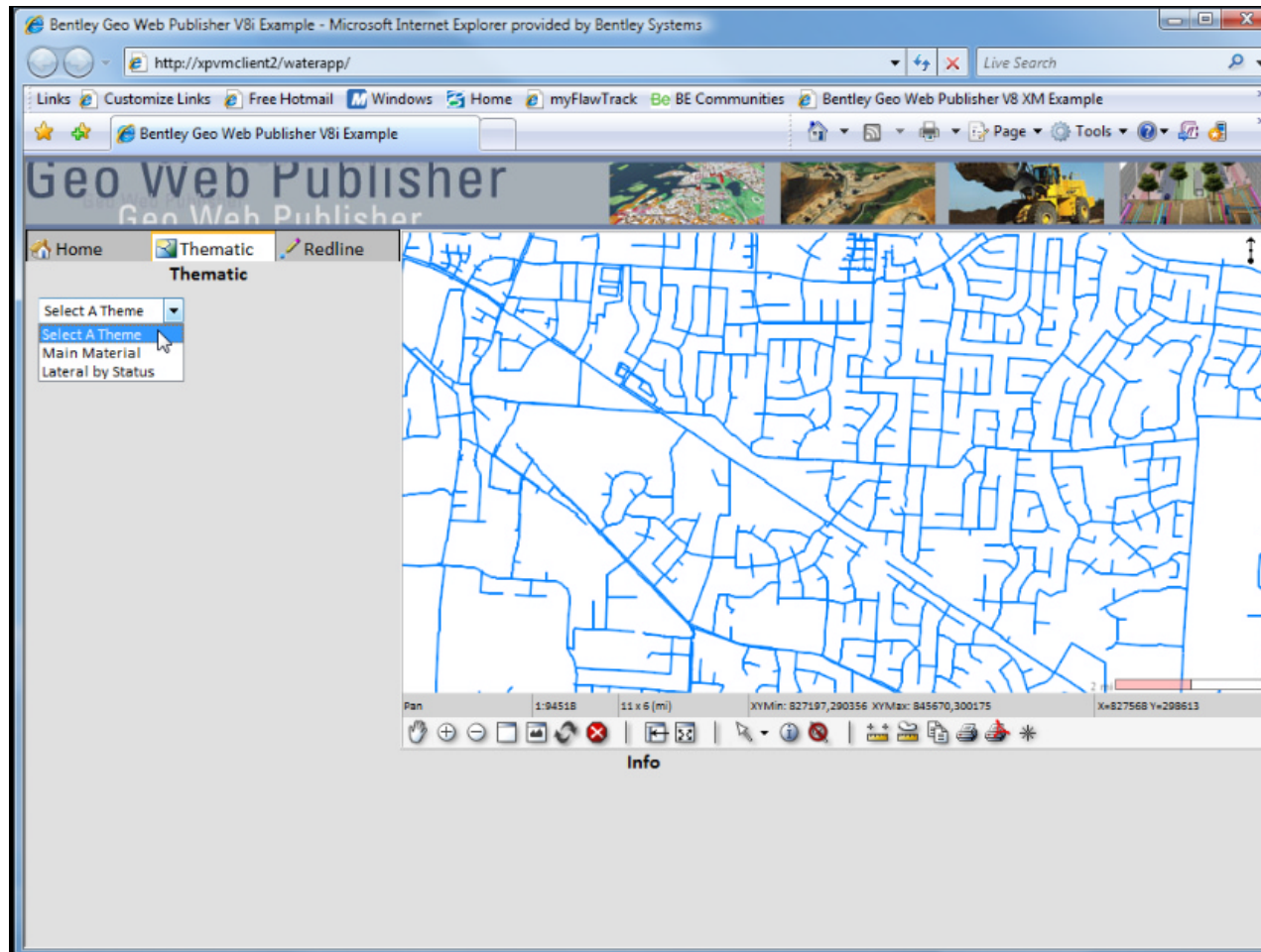
AVI: Introduction to ProjectWise V8i Linear Reference System



AVI: Introducing Expert Designer for Water V8i



AVI: Geo Web Publisher V8i workflows based on Bentley Water V8i



Why Bentley?

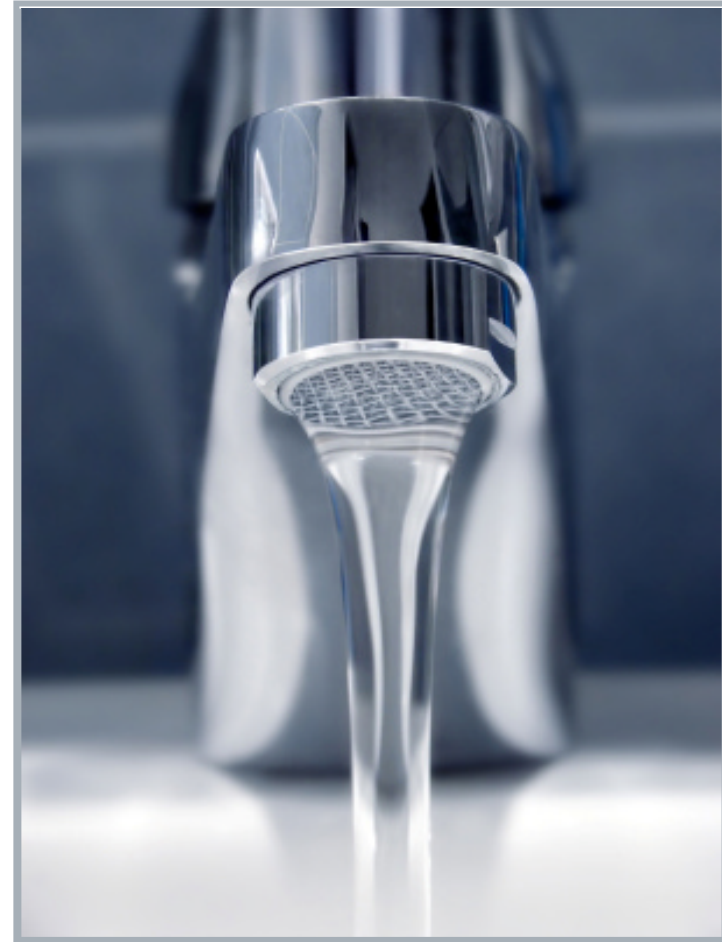
Software portfolio breadth and depth

- Spanning the water, wastewater, stormwater and AEC industries

Your trusted business partner, committed to solving engineering problems worldwide

- Innovative subscription programs:
 - Enterprise License Subscription
 - Municipal License Subscription
- Continuous investment into R&D (more than \$100 M in 2009)

Integrated and interoperable software products



Thank you

Contact information

- Steen.Laessoe@bentley.com ISD GEO Scandinavia
- [Stefan Sigvardsson@bentley.com](mailto:Stefan.Sigvardsson@bentley.com) ISD Civil Scandinavia
- Slavco.Velickov@bentley.com ISD Water Industry EMEA

- [**www.bentley.com/water**](http://www.bentley.com/water)