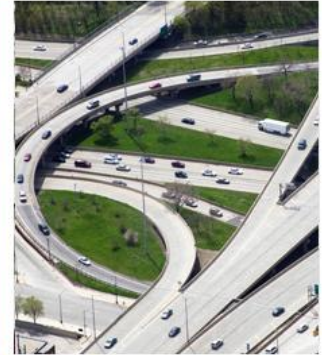


NORDIC CIVIL 2009



Bentley Software Civil Development

Mike Wilson
Director of Development

Today, Tomorrow

In order to better understand where we are going tomorrow let's take a brief look at today

Today

V8i

Tomorrow

V8i

SELECTseries 1

Today

- The V8*i* Release
 - Synchronized release across Bentley
 - GEOPAK/InRoads/MXROAD
 - November 18th, 2008

MicroStation® V8*i*

Bentley® GEOPAK® V8*i*

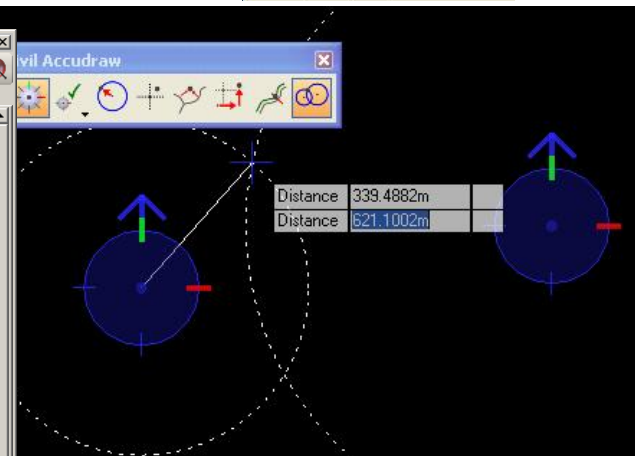
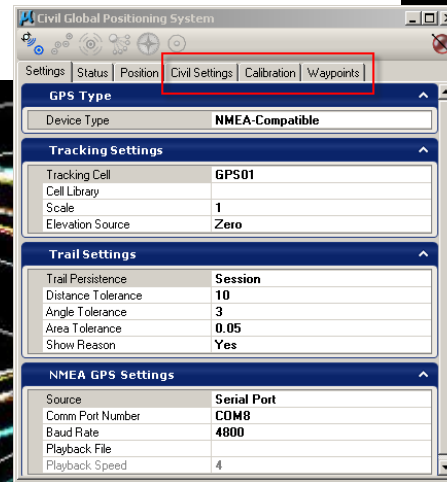
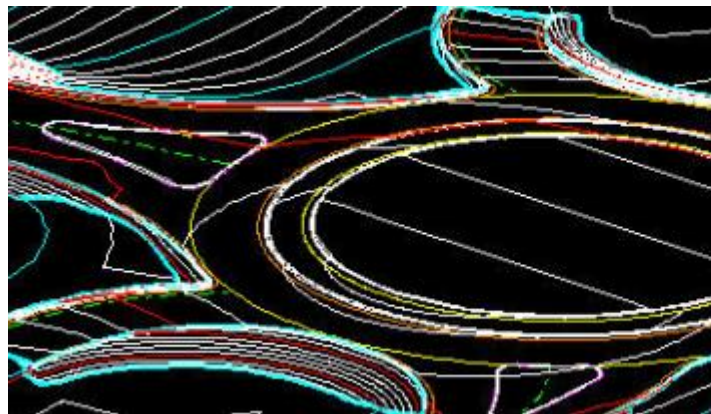
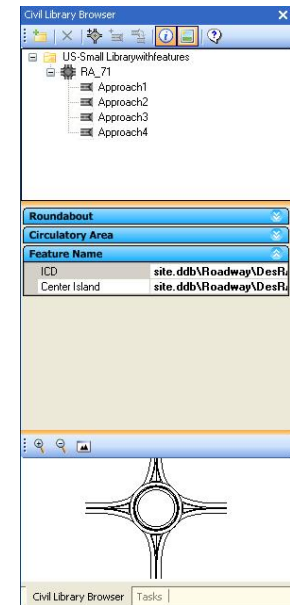
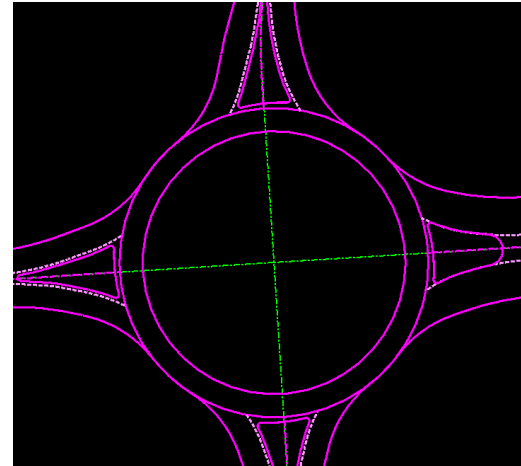
Bentley® InRoads® V8*i*

ProjectWise® V8*i*

Bentley® MXROAD® V8*i*

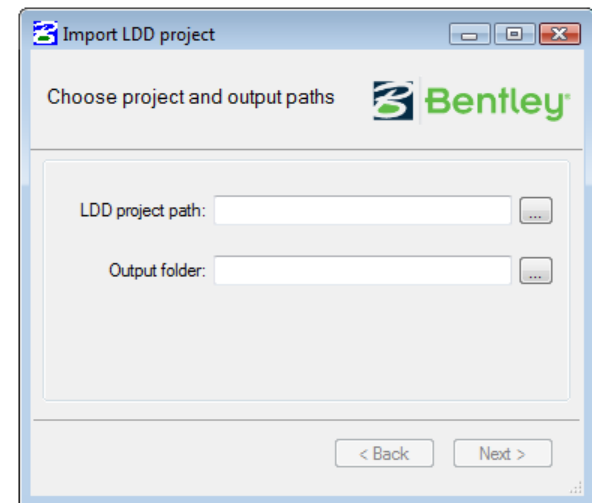
V8i Highlights - Civil Platform

- Roundabouts
- Civil Accudraw
 - Distance /Direction
 - Distance/Distance
 - Station/Offset
- Civil Track GPS



V8i Highlights – LDD Import

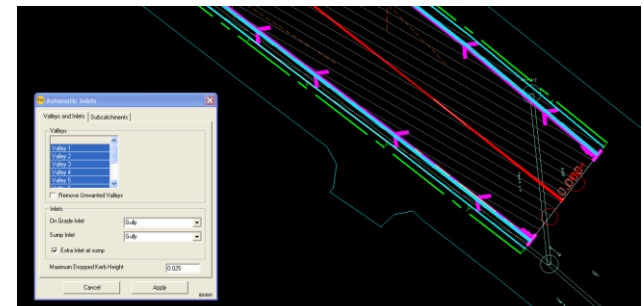
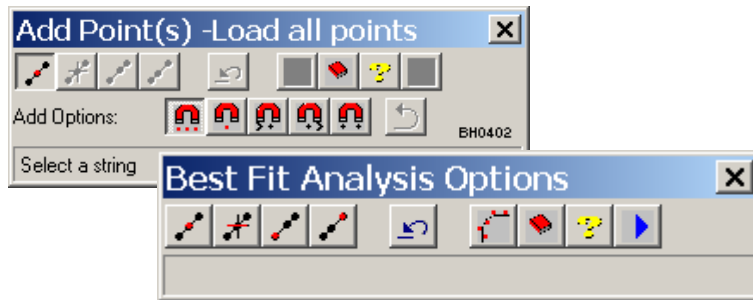
- Land Development Desktop
- Standalone program
 - UILauncher.exe
 - Located in the BIN directory
- Translates a LDD project into a LandXML file
- Import via the LandXML Import
 - InRoads
 - GEOPAK
 - MXROAD



V8i Highlights

Bentley® MXROAD® V8i

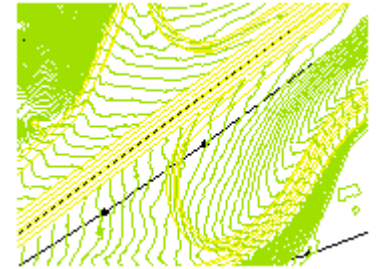
- Integrated Civil Platform tools
- Increased model performance
- Improved UX workflows
- Innovative design solutions
 - Numerous enhancements to a variety of areas such as drainage and alignments
- Numerous fixes and minor enhancements



V8i Highlights

Bentley® InRoads® V8i

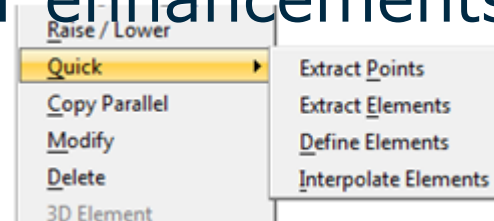
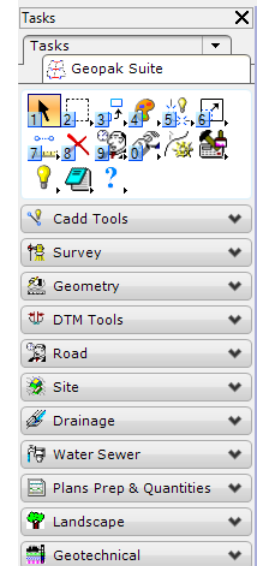
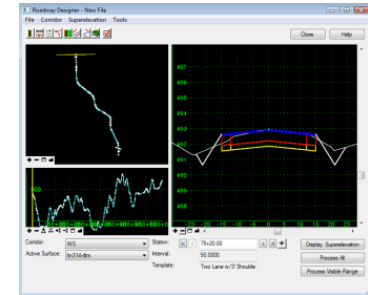
- Integrated Civil Platform Tools
- Performance in a variety of areas
 - 3GB/Features/Triangles(mesh)/Solids
- Surface Editing improvements
- Geometry UX and command improvements
- Profile and Cross Section additions
- Vertical Alignment Healing
- ProjectWise V8i support
- Numerous fixes and minor enhancements



V8i Highlights

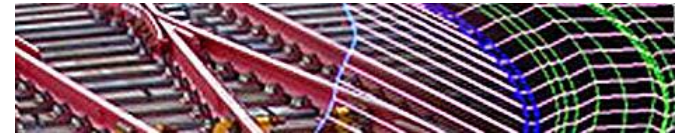
Bentley® GEOPAK® V8i

- Integrated Civil Platform Tools
- Task Navigation Menus
- Improvements to Plan/Profile Sheet composition
- Corridor Modeling Enhancements
- Improved Roadway Designer Integration
- MicroStation Annotation Scale support
- Site Modeler Quick Extract Tools
- Numerous fixes and minor enhancements



V8i Highlights

Bentley Rail Track V8i



- Quick Regression
 - A quicker / one step regression solution
- Essentially inherits all InRoads items

Edit / Review Horizontal Regression Points

Name	Northing	Easting	Style	Includ...	Status	Offset
2561	31216.119...	313191.784...	Default	No	Normal	0.0000
2564	31212.552...	313201.407...	Default	No	Normal	0.0000
2565	31209.194...	313211.126...	Default	No	Normal	0.0000
2568	31206.001...	313221.305...	Default	No	Normal	0.0000
2569UE	31202.533...	313234.165...	Default	No	Normal	0.0000
2572	31200.263...	313244.391...	Default	No	Normal	0.0000
2602	31198.384...	313255.023...	Default	No	Normal	0.0000
2605	31197.172...	313263.954...	Default	No	Normal	0.0000
2606	31196.225...	313273.629...	Default	No	Normal	0.0000
2609	31195.702...	313282.450...	Default	No	Normal	0.0000
2610UE	31195.533...	313287.719...	Default	No	Normal	0.0000
2612	31195.459	313294.161	Default	No	Normal	0.0000

Buttons: Close, Select Only, Select & Regress, Quick..., Report..., Help, Insert..., Edit..., Delete



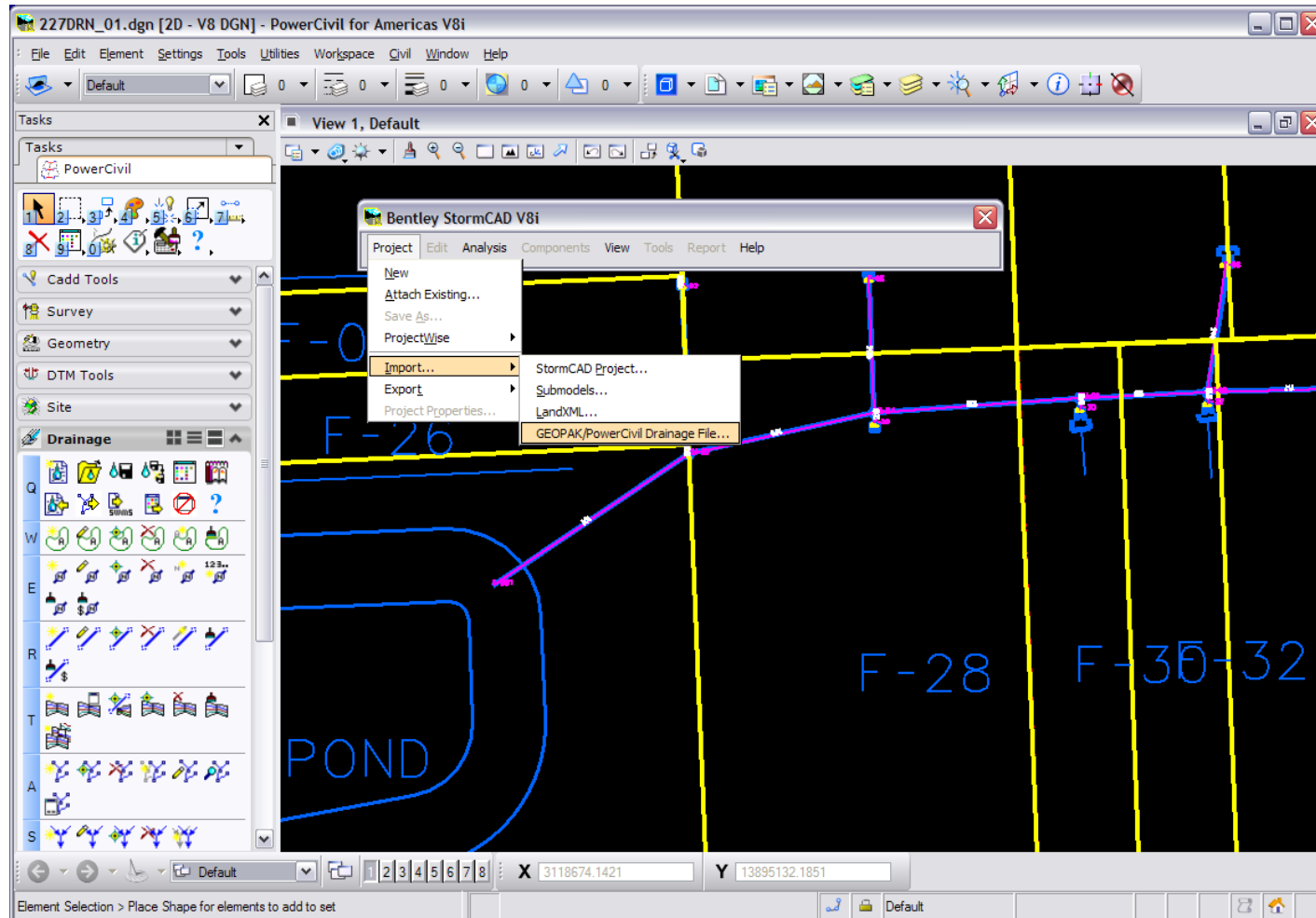
Quick

Interval:

Threshold:

Compound Radii Ratio:

V8i Highlights - Haestad Integration



Tasks

View 1 - Top, Default

Tasks

Drawing Composition

Organize

Drawing

Q

W

E

R

T

A

S

D



Today

Everything discussed up to now is available today. Civil products were posted to SELECT Downloads on November 18th, 2008.

It's also important to note that we continue to fix and enhance all product lines

Let's take a deeper look at "today"

Today

Today is not completely about fixes,
enhancements, new commands, etc.

It's much, much more...

It's about evolution,
integration,
interoperability,
increased productivity,
reuse, comprehensive, reliable
and
it's about Modeling.

Let's take a look a further look at tomorrow...

Tomorrow...

MicroStation® V8i
SELECTseries 1

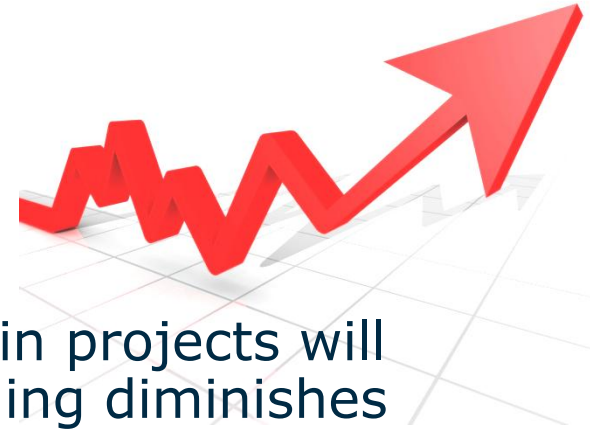
Bentley® GEOPAK® V8i
SELECTseries 1

Why Tomorrow?

Bentley® MXROAD® V8i
SELECTseries 1

Bentley® InRoads® V8i
SELECTseries 1

Business Trends



It's ALL about project delivery

- Design-Build and Design-Build-Maintain projects will become more the norm as public funding diminishes
- Sub-contracting by municipalities/local government to Engineering Consultants is increasing. In house review and management
- Driven by construction contractors, machine control is gaining popularity and requires a full 3D Model
- Ageing Infrastructure can't be ignored. It is about 3R Design Capabilities (Resurface, Reconstruction, Rehabilitation)

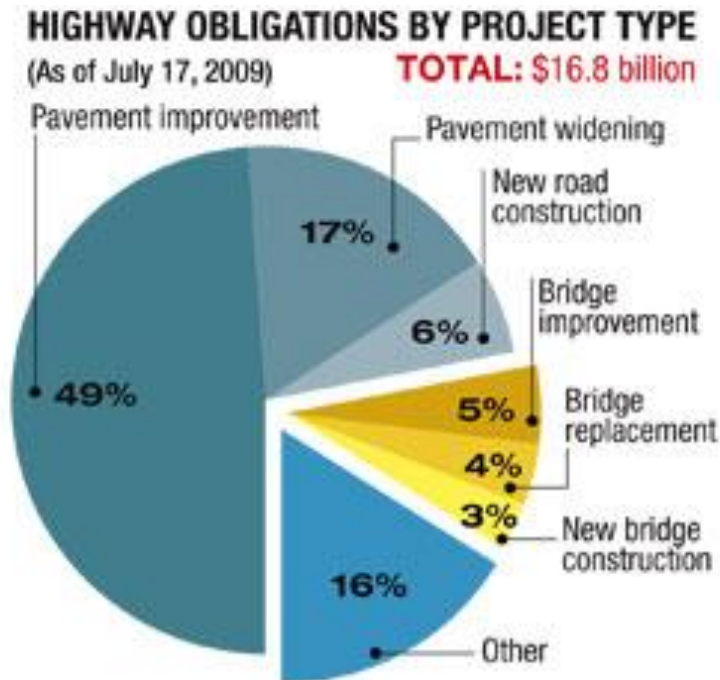
Technology Trends

- Inevitable shift to Machine Control and Construction Automation
- Traditional Design-Bid-Build linear paper-based workflows are quickly being superseded by dynamic, real-time digitally-based best practices



Overlay and Rehabilitation

- Makes up approximately 82% of projects currently undertaken by DOTs.



Source: GAO analysis of FHWA data
Source: Engineering News Record

Overlay and Rehabilitation

“State highway agencies have taken the term “shovel-ready” to heart, so far devoting nearly half of the American Recovery and Reinvestment Act dollars to pavement improvements, according to a recent report from the U.S Government Accountability Office.”

Source: Engineering News Record
Article: **Repaving Projects Dominate ARRA Highway Funding**
08/12/2009
By [Tom Ichniowski](#)

Tomorrow...

MicroStation® V8i
SELECTseries 1

ProjectWise® V8i
SELECTseries 1

What makes
up Tomorrow?

Bentley® GEOPAK® V8i
SELECTseries 1

Bentley® InRoads® V8i
SELECTseries 1

Bentley® MXROAD® V8i
SELECTseries 1

V8i (SELECTseries 1)

For V8i (SELECTseries 1) Bentley Map will be delivered with:

- GEOPAK Civil Engineering Suite
- InRoads Suite
- MXROAD Suite

Bentley Map™ V8i
SELECTseries 1

- Each of the above will include all of Bentley Map and will not require an additional license

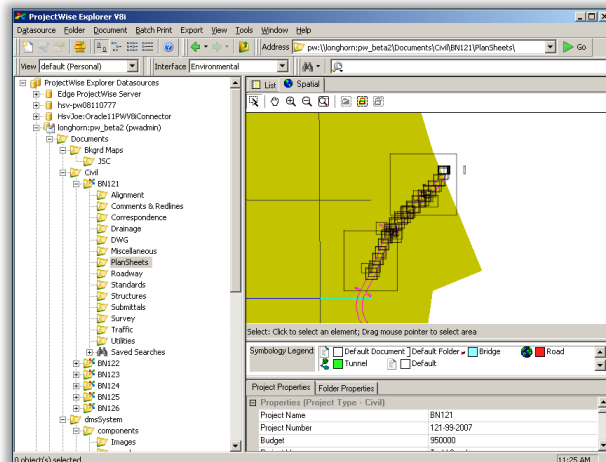
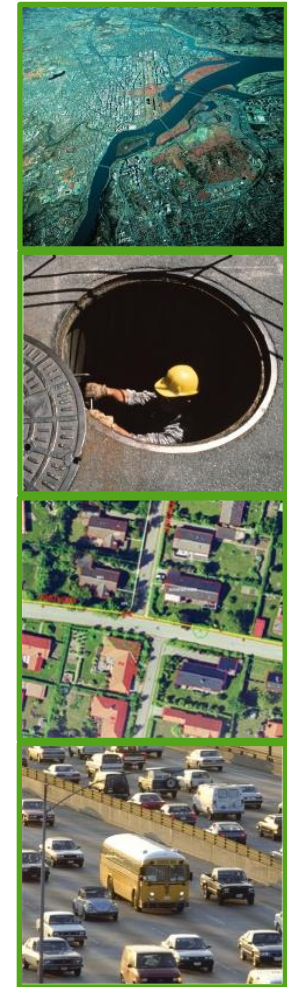
V8i (SELECTseries 1)

Integration of Bentley Map functionality

Powerful GIS capabilities in a Civil context

Add geospatial and GIS content and functionality to your current environment

- Geographic search by location



V8i (SELECTseries 1)

Integration of Bentley Map functionality

Powerful GIS capabilities in a Civil context

- Assemble, search, view and edit geospatial/non-geospatial data from multiple sources
 - ESRI Shape files (SHP)
 - Digital Elevation Models (DEM)
 - Digital Orthophoto Quadrangle (DOQ)
 - Digital Raster Graphics (DRG)
- **Geocoordination**
Re-project disparate coordinate systems

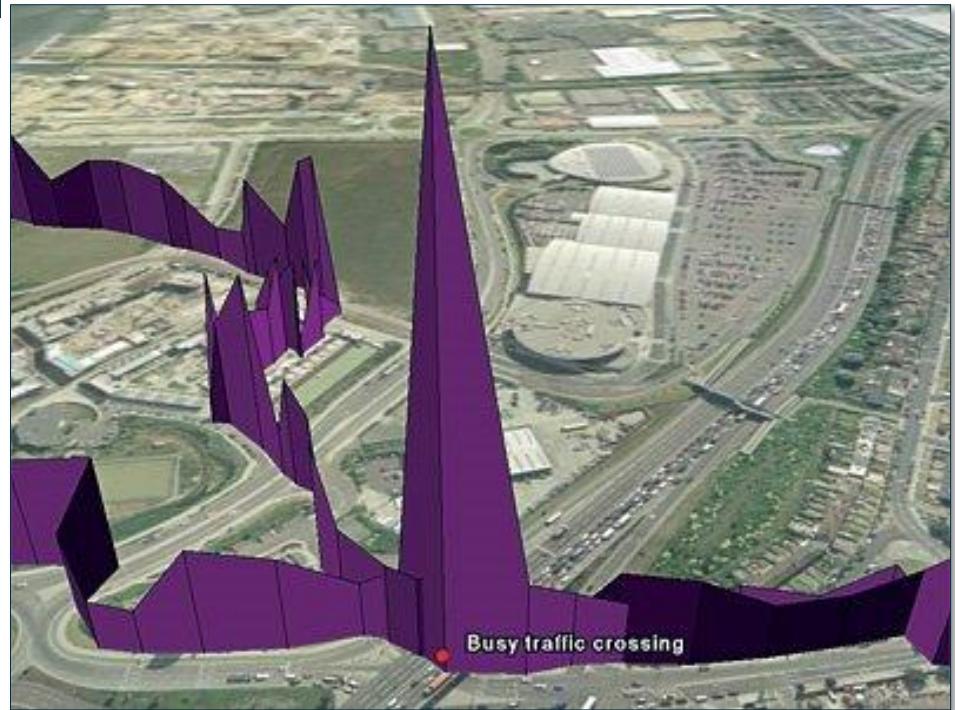
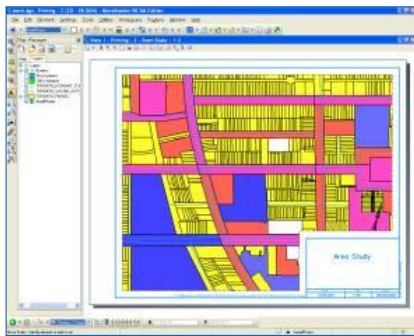


V8i (SELECTseries 1)

Integration of Bentley Map functionality

powerful GIS capabilities in a Civil context

- Produce thematic maps and reports
- Export design data to GIS
- *Map Manager* easy-to-use mapping



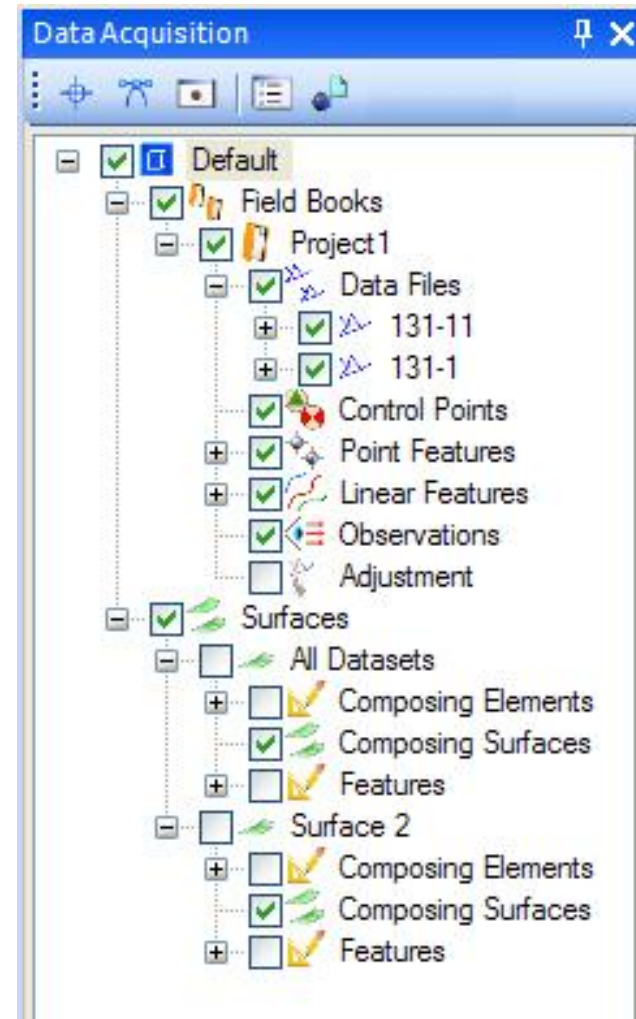
V8i (SELECTseries 1) – Data Acquisition

- New tools that allows a user to compile data from disparate sources into a coherent model to feed Design and collaboration processes
- Utilizes a user friendly, intuitive interface
- Dynamic and Graphically oriented import of variety of formats including:
 - Raw field survey data
 - Aerial Mapping Surface
 - LiDAR
 - Raster DEM
 - LDD, CAiCE, XML 1.2
 - In other words, data formats which are directly consumed by the design workflow.



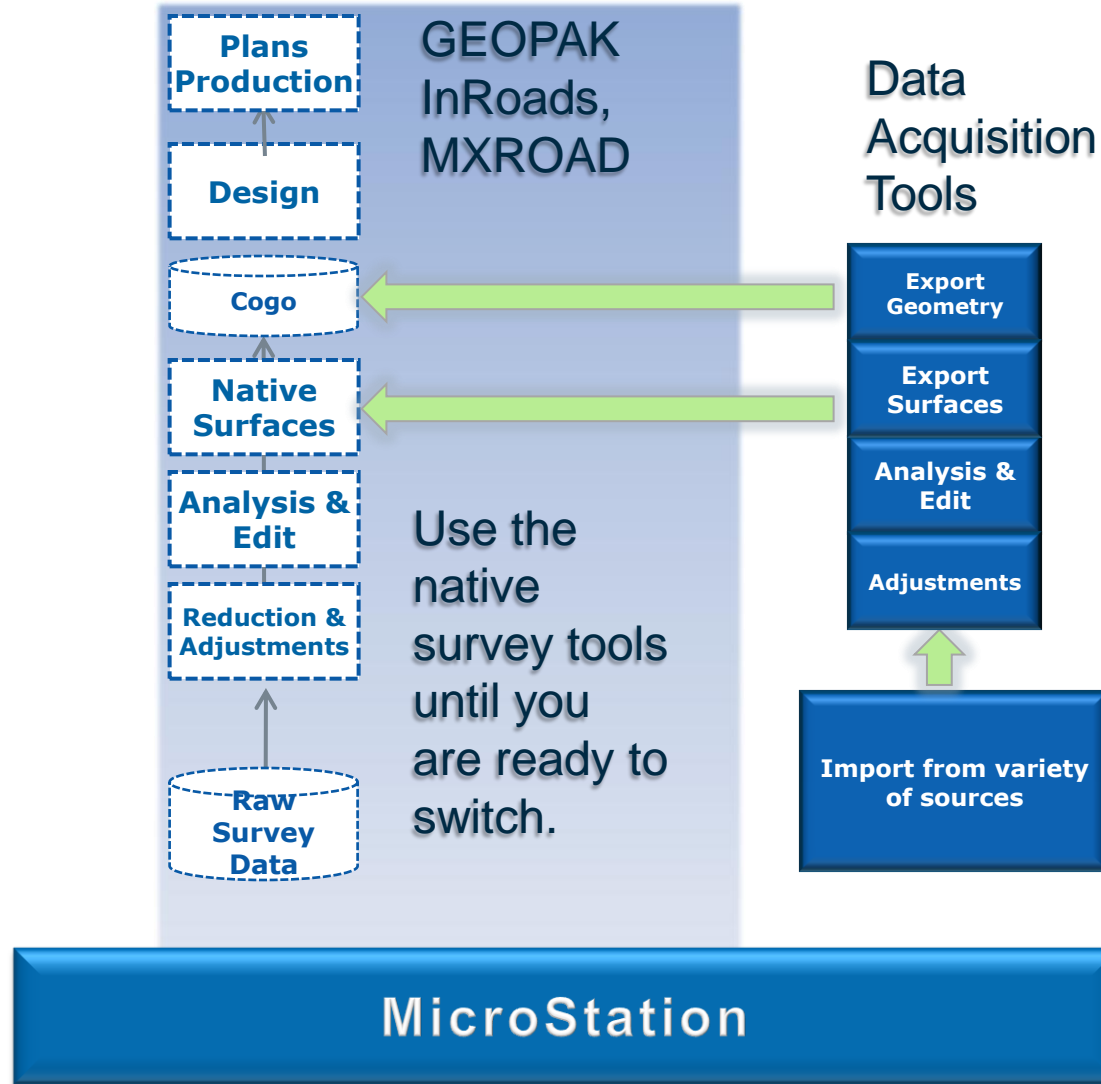
V8i (SELECTseries 1) – Data Acquisition

- Improved User Experience
 - More efficient
 - Quicker
 - Easier to learn
 - Windows “like”
- DGN Data Store
 - No external files
 - UNDO/REDO
- Automated Terrain Models
- Preserves Investment in Feature Tables



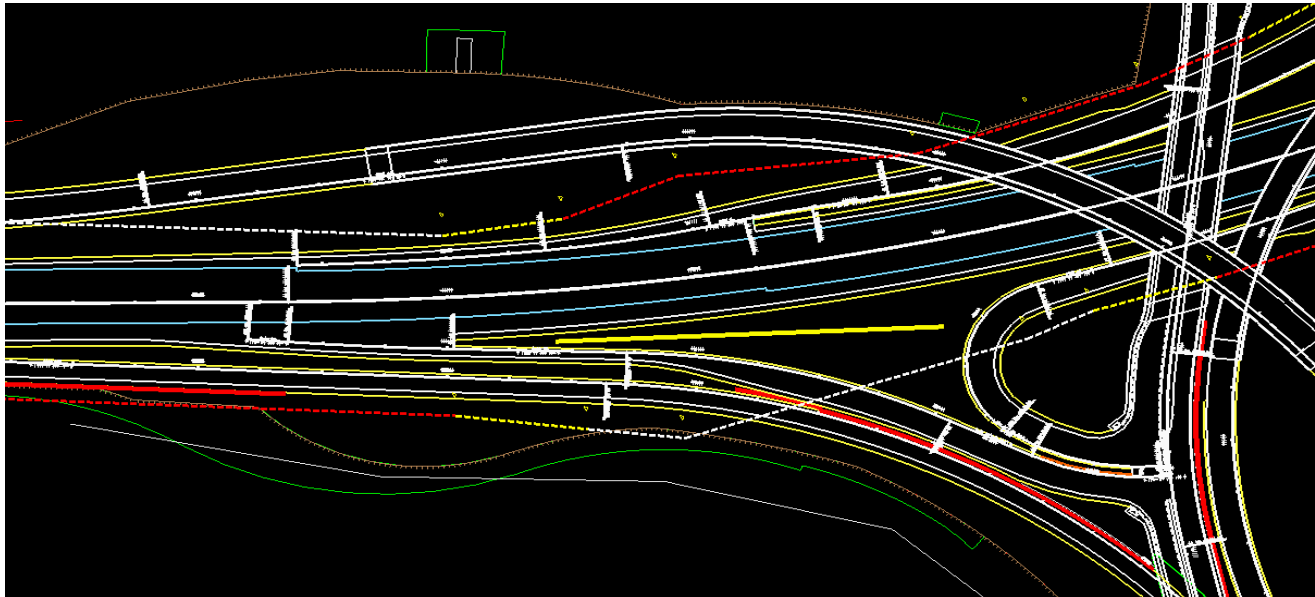
V8i (SELECTseries 1) – Data Acquisition

Integration



V8i (SELECTseries 1) – Civil Platform Geometry

- A complete set of horizontal tools for schematic and horizontal geometric design
- Provide the civil designer with state-of-the-art tools
 - Integrated with Microstation
 - Better User Experience (heads up and dynamic)
 - Rules based placement and editing to maintain relationships
 - Maintain and update relationships

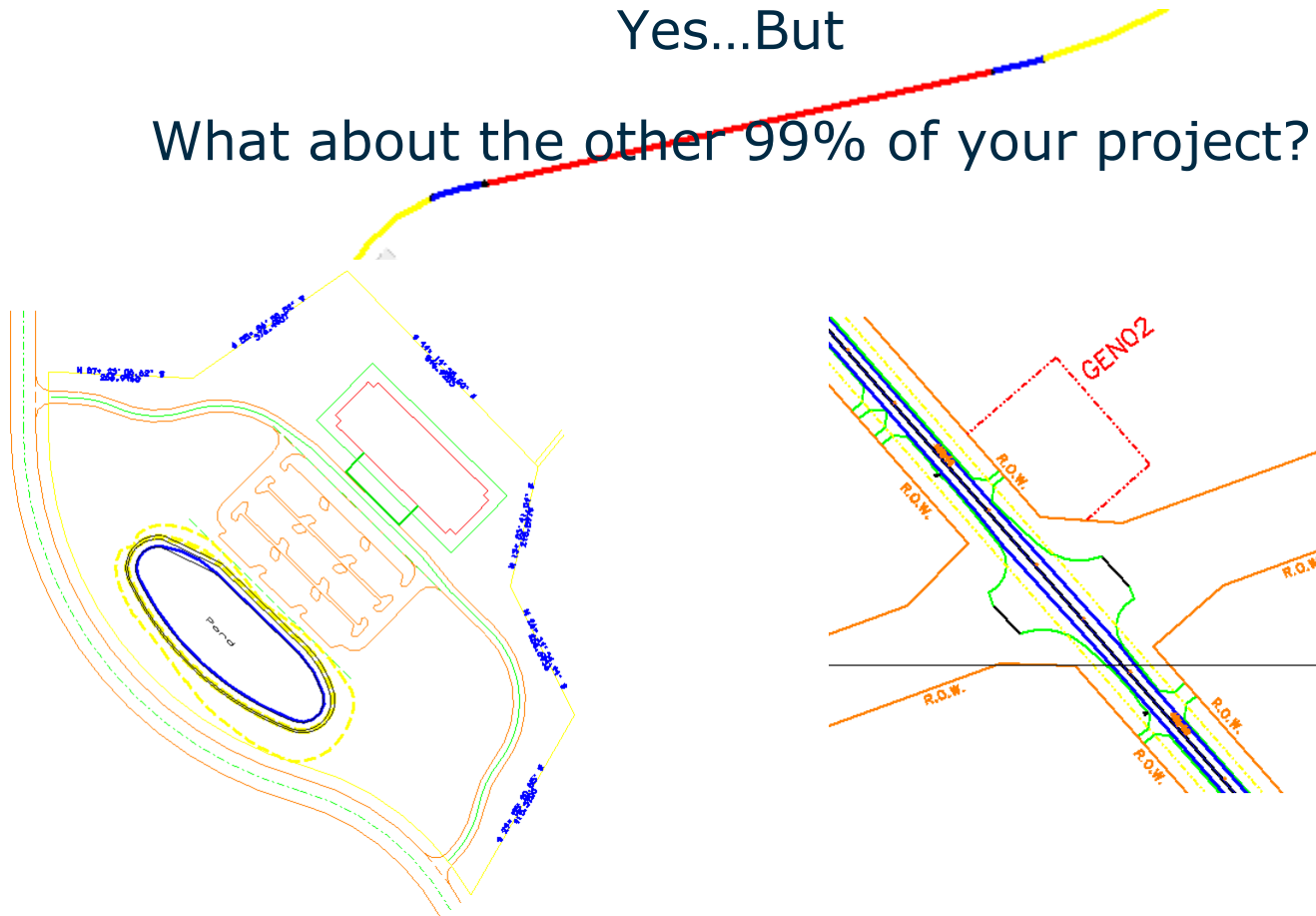


What is Geometry?

Alignments/Chains?

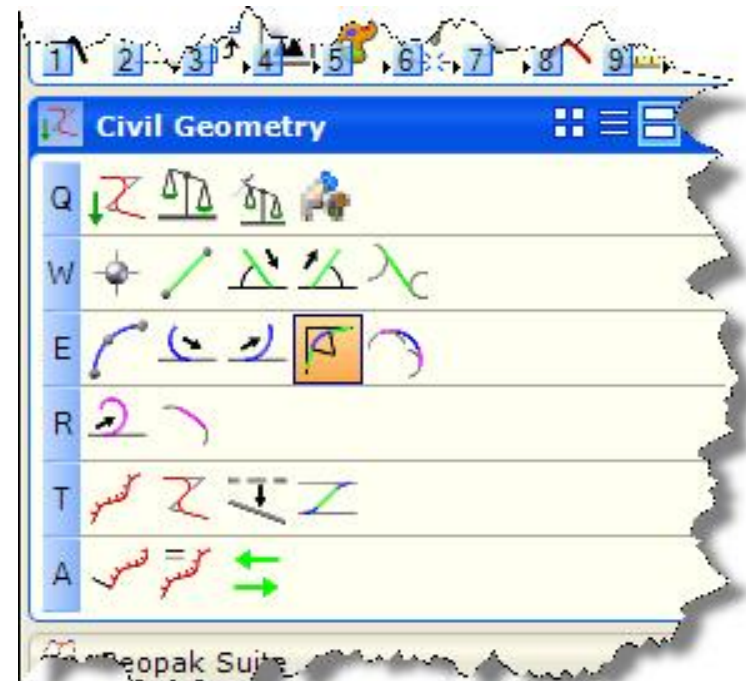
Yes...But

What about the other 99% of your project?

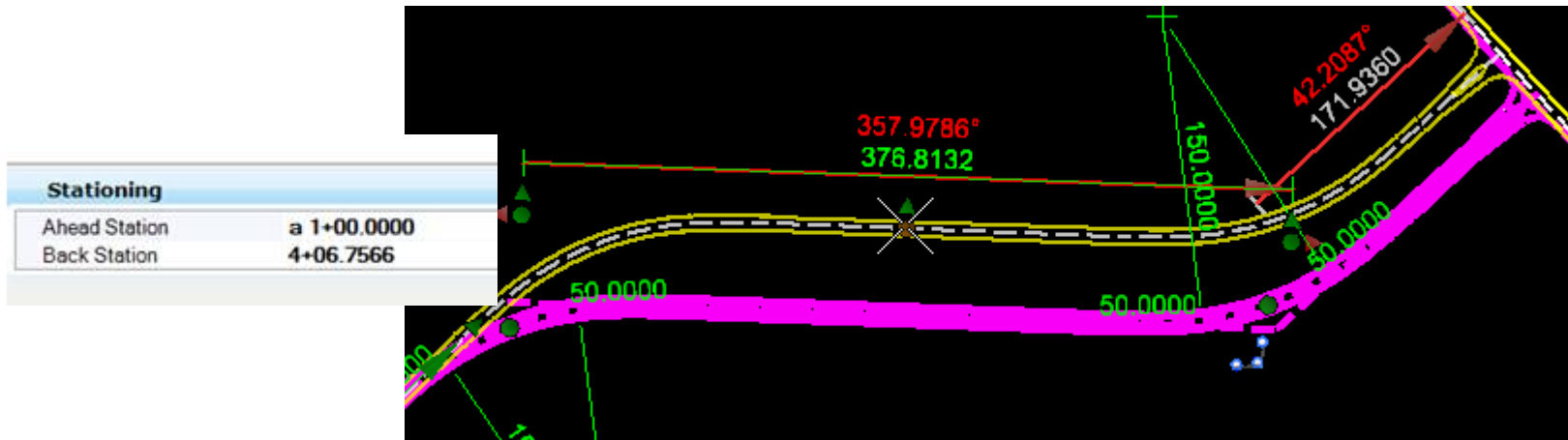
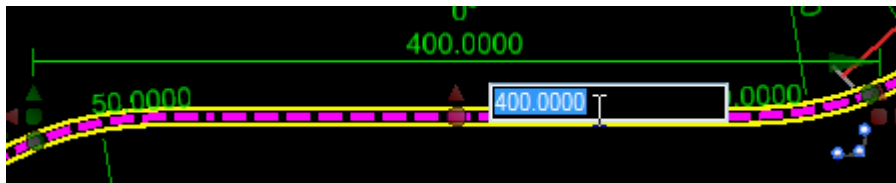
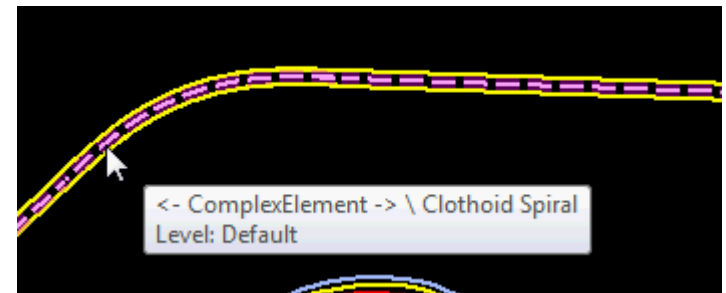
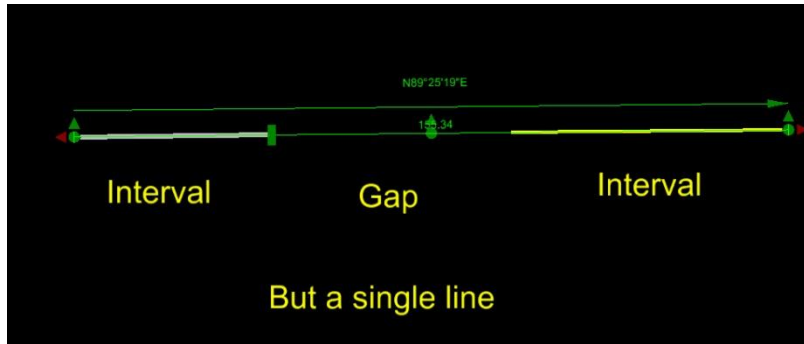


V8i (SELECTseries 1) – Civil Platform Geometry

- New Commands to accomplish horizontal geometric layouts
- Commands are:
 - Integrated with Microstation
 - Dynamic
 - Utilize graphical feedback
 - Create rules based elements
 - Preserve user input and relationships
 - Capture Design Intent



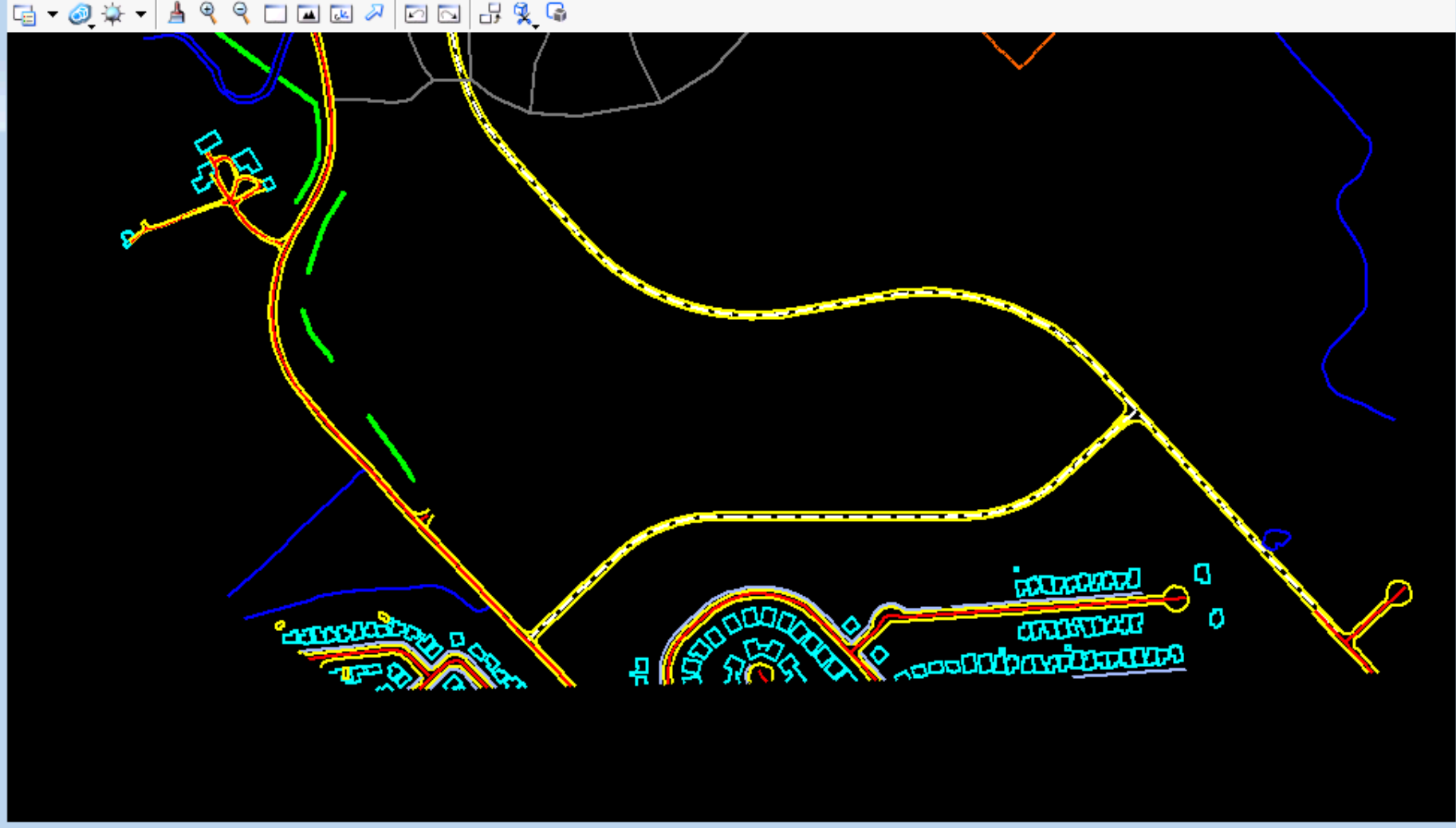
V8i (SELECTseries 1) – Civil Platform Geometry



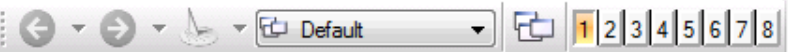


Tasks
Element Selection

View 1, Default

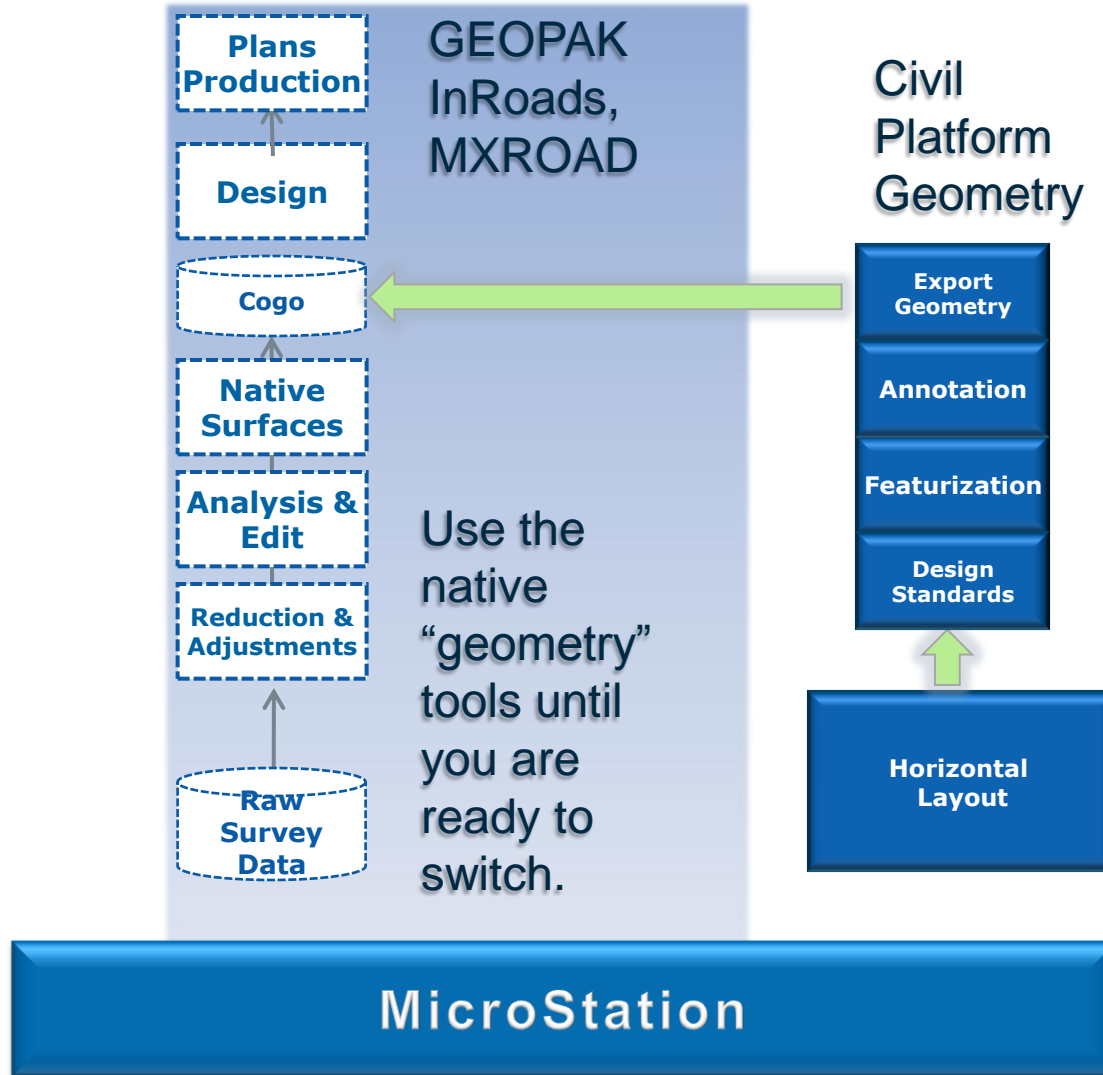


References (2 of 2 unique, 0 displayed)



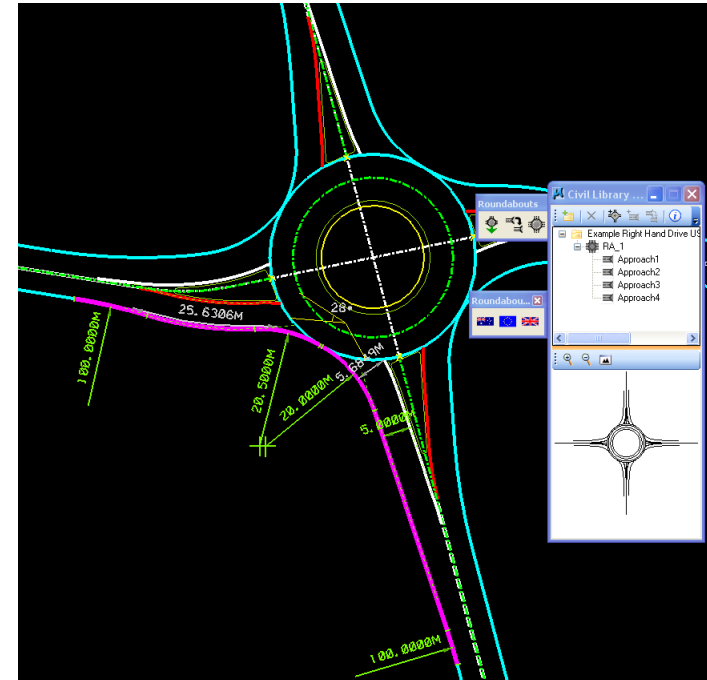
V8i (SELECTseries 1) – Civil Platform Geometry

Integration



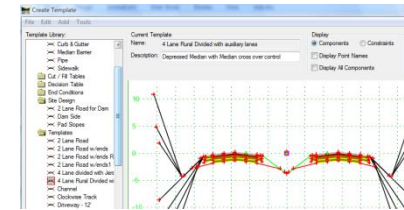
V8i (SELECTseries 1) – Roundabouts

- Uses Geometric Object Model
- Associative Rule Based Construction
- Automatically updates based on design values and standards
- Preserves investment in feature tables by utilizing XIN, DDB, PSS



V8i (SELECTseries 1) – Roadway Designer

- Premiere tool for corridor modeling
 - Simply the best tool on the market
- Handles the simple design to the complex
- Interactive, Graphic, Instant Feedback
- Single effort gives the capability to all civil design packages
 - Yes, with this release Roadway Designer will integrated into MXROAD. Already in GEOPAK and InRoads.
 - Integration, Interoperability between the three
 - Very effective at generating 3D models

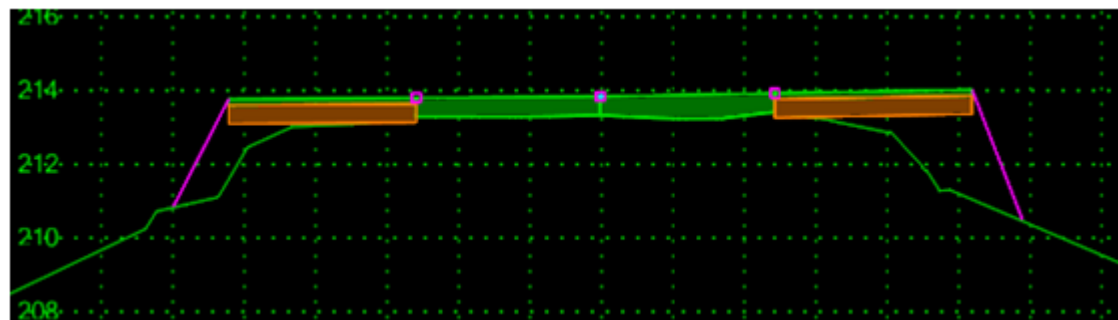
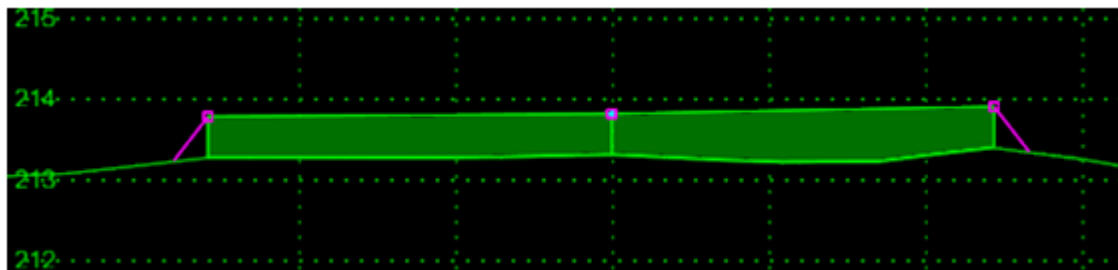


V8i (SELECTseries 1) – Roadway Designer

- It is about 3R Design Capabilities - Resurface, Reconstruction, Rehabilitation
- Significant enhancements to our flagship roadway design tool to accommodate 3R
- Single effort gives the capability to all civil design packages
- Ultimate tool for road design generating 3D models
- Template and Component Based
- Design output is perfect for Automated Machine Guidance

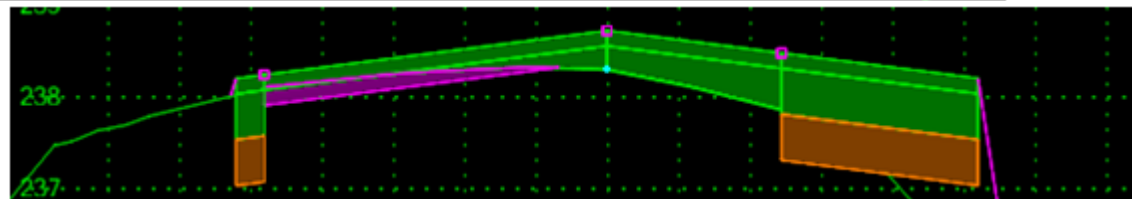
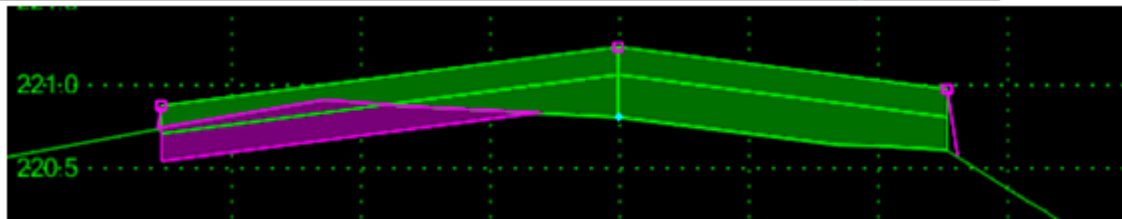
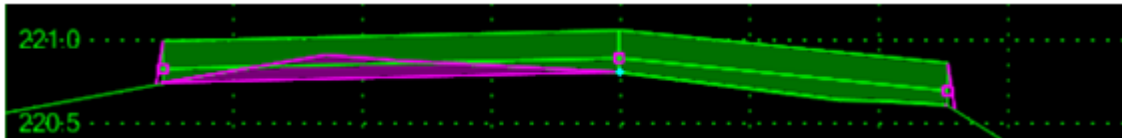
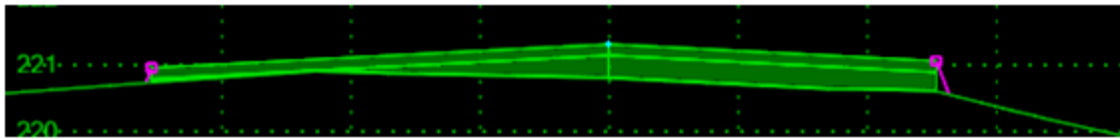
V8i (SELECTseries 1) – Roadway Designer

- Simple method
 - overlay
 - overlay and widening



V8i (SELECTseries 1) – Roadway Designer

- Cross slope correction method with
 - leveling
 - grinding
 - grinding and leveling
 - grinding, leveling and widening



An aerial photograph of a complex, multi-level highway interchange. The image shows several overpasses and ramps that curve and cross each other in various directions. Numerous cars are visible on the roads, indicating active traffic. The surrounding area includes some greenery and what appears to be a parking lot or service area. The text "Roadway Designer" is overlaid in the center of the image in a bright green, bold, sans-serif font.

Roadway Designer

V8i (SELECTseries 1)

- Up to this point all V8i (SELECTseries 1) items mentioned are integrated into all three civil design applications

Bentley® InRoads® V8i
SELECTseries 1

Bentley® GEOPAK® V8i
SELECTseries 1

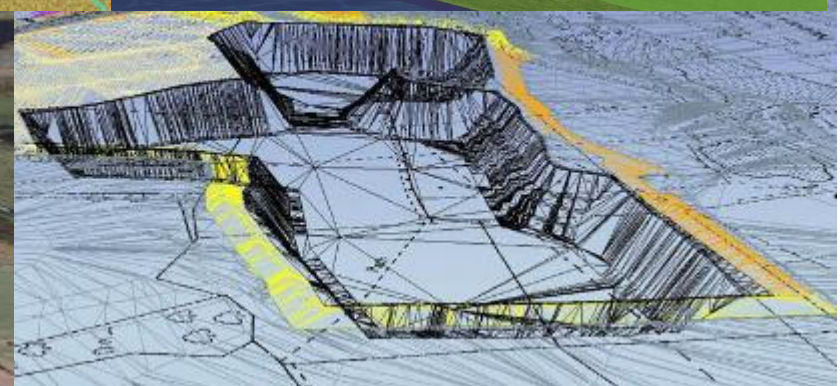
Bentley® MXROAD® V8i
SELECTseries 1

- Let's discuss a few product specific items

V8i (SELECTseries 1)

Bentley® InRoads® V8i
SELECTseries 1

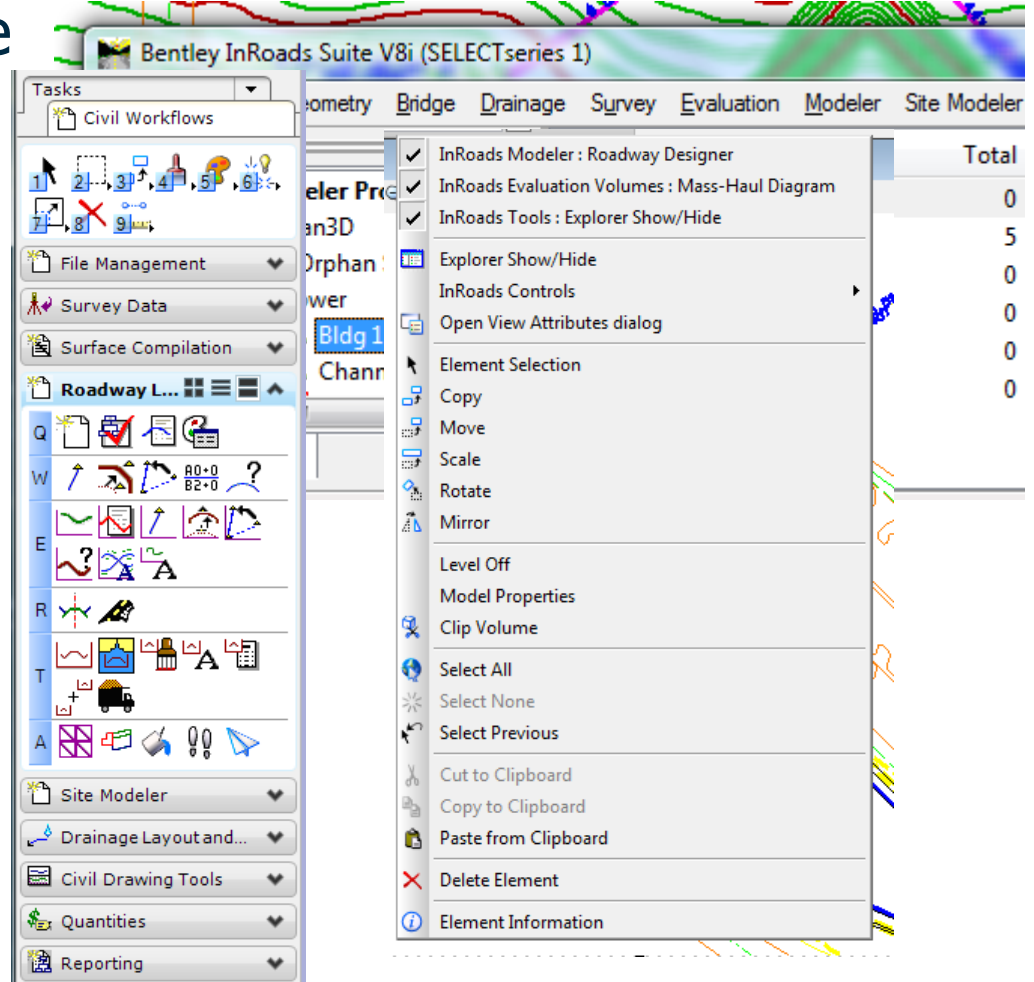
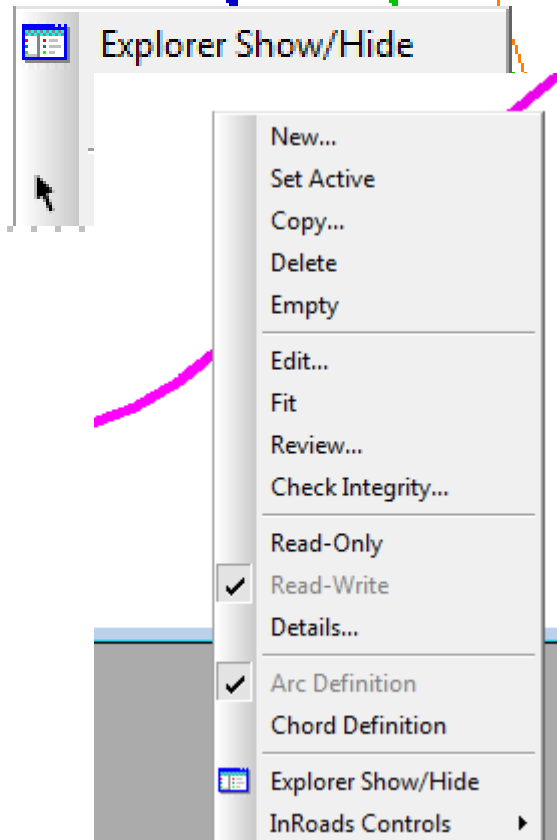
- Added Site Modeler to InRoads
- Ideal for “non-linear” design situations
- Object relationships and associations



V8i (SELECTseries 1)

Bentley InRoads V8i SELECTseries 1

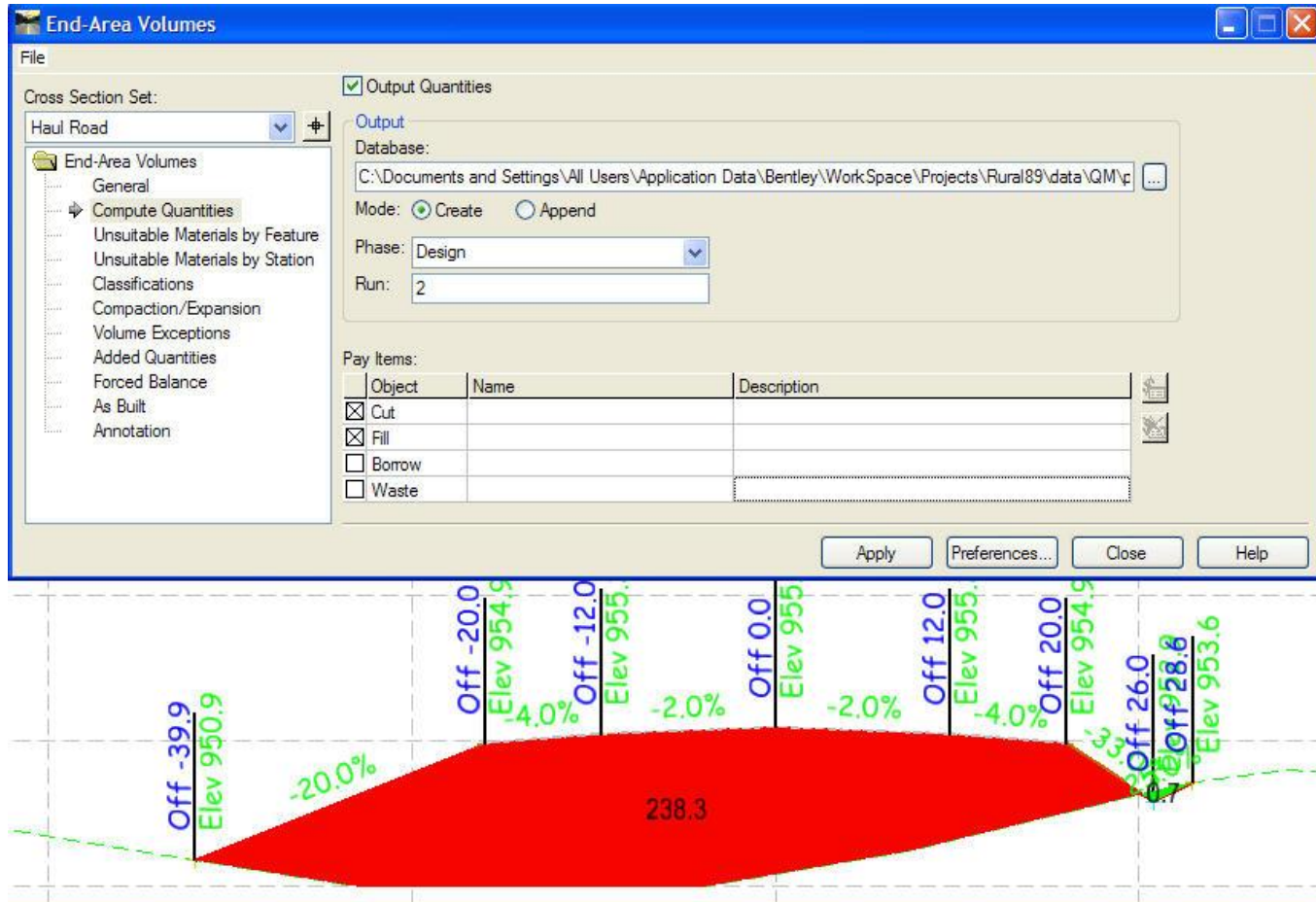
- User Experience



V8i (SELECTseries 1)

Bentley InRoads V8i
SELECTseries 1

Volumes to Quantity Manager



- Resolve Crossing Segments

Resolve Crossing Segments

Surface: existing

Mode: Interactive

Fence Mode: Ignore

Delta Tolerance: 0.01

Method

Use Dominant Feature:

Feature Filter: <Unnamed>

Match Elevation:

High Low Median

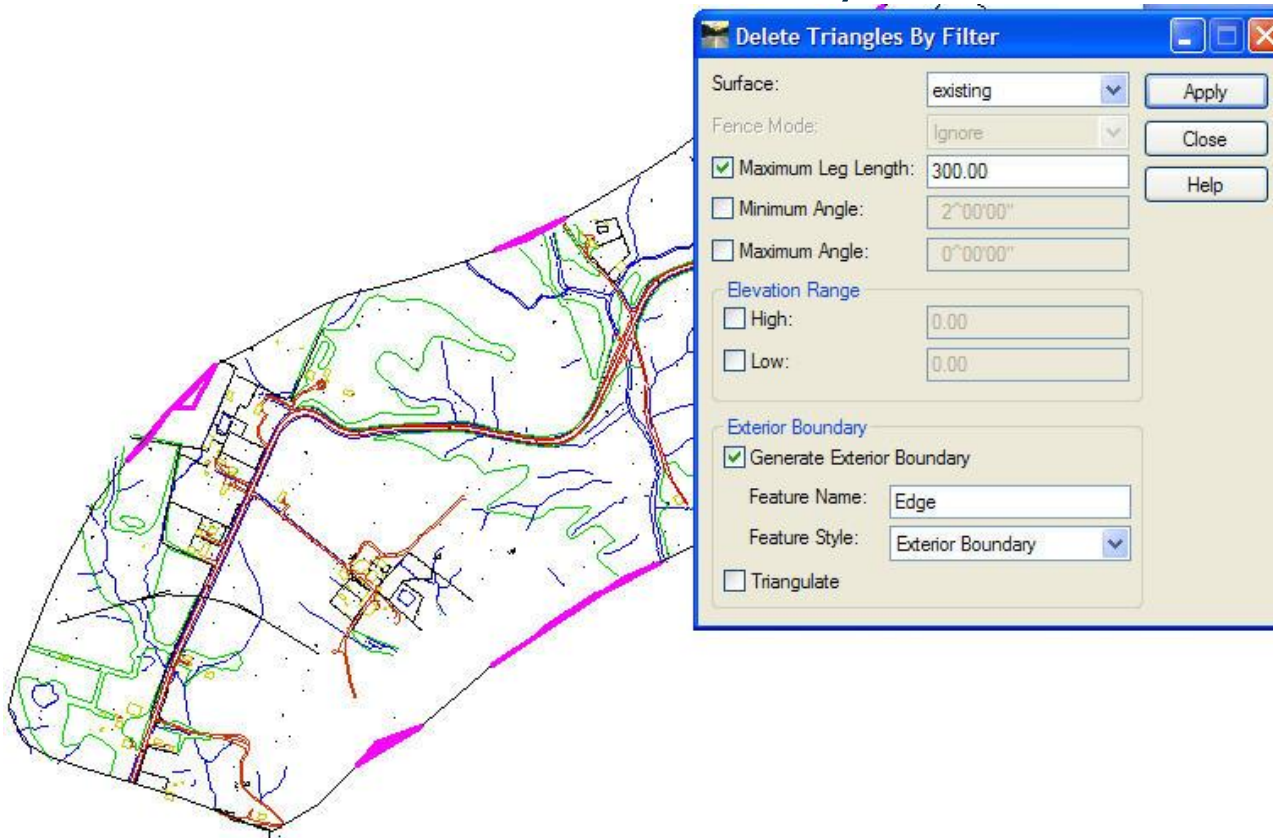
Crossing Segments: 4

Feature 1	Feature 2	Elevation Delta
ExShoulder	Test1	2.04
Exeop1	Test1	0.73
Exesp	Test1	0.75
ExShoulder	Test1	2.73

V8i (SELECTseries 1)

Bentley® InRoads® V8i
SELECTseries 1

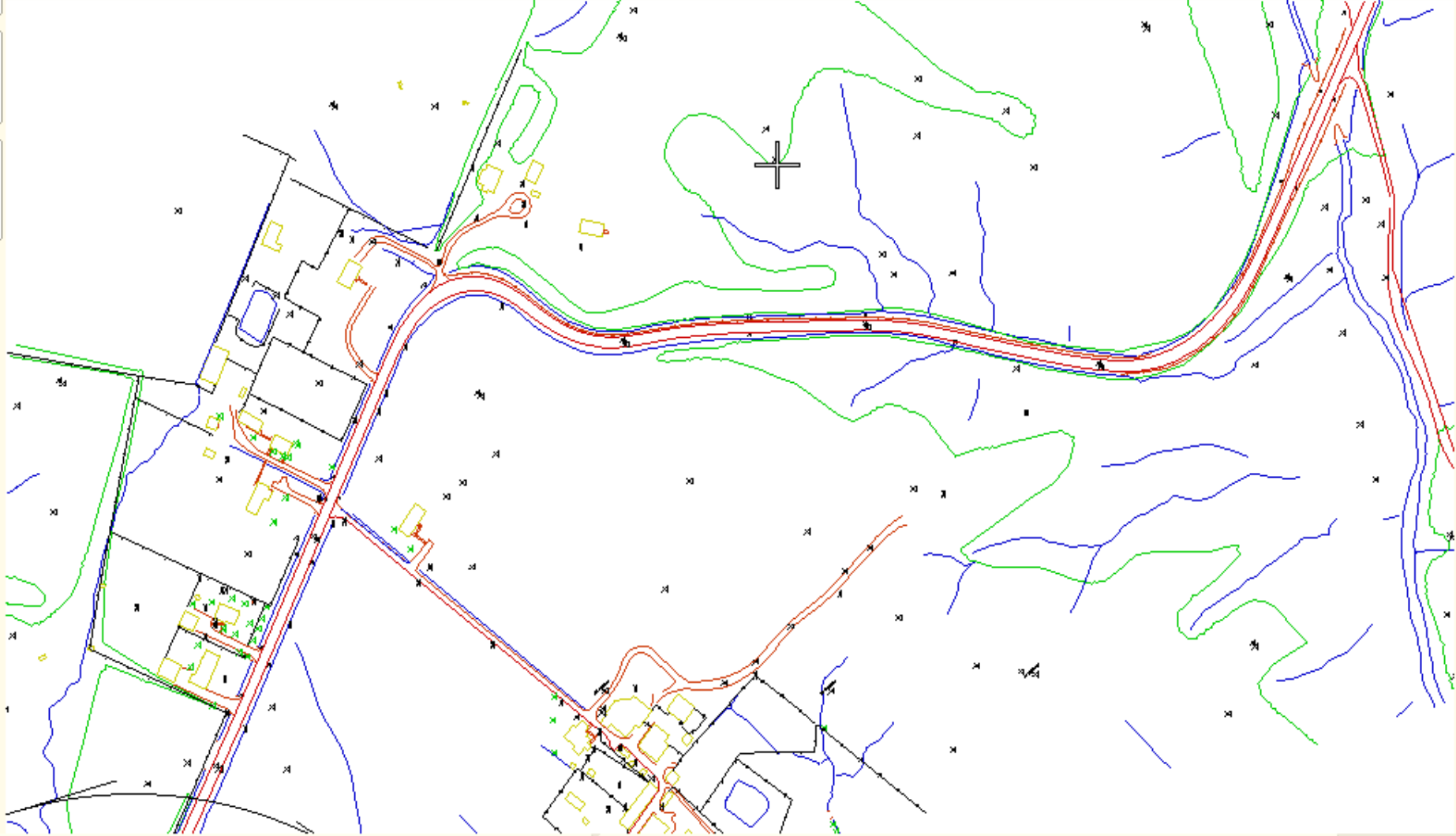
- Delete Triangles by Filter
 - More options for removal
 - Creation of Exterior Boundary



Proposed Curb 0 0 0 0 0 0 0 0 0

View 1 - Top, Pictures

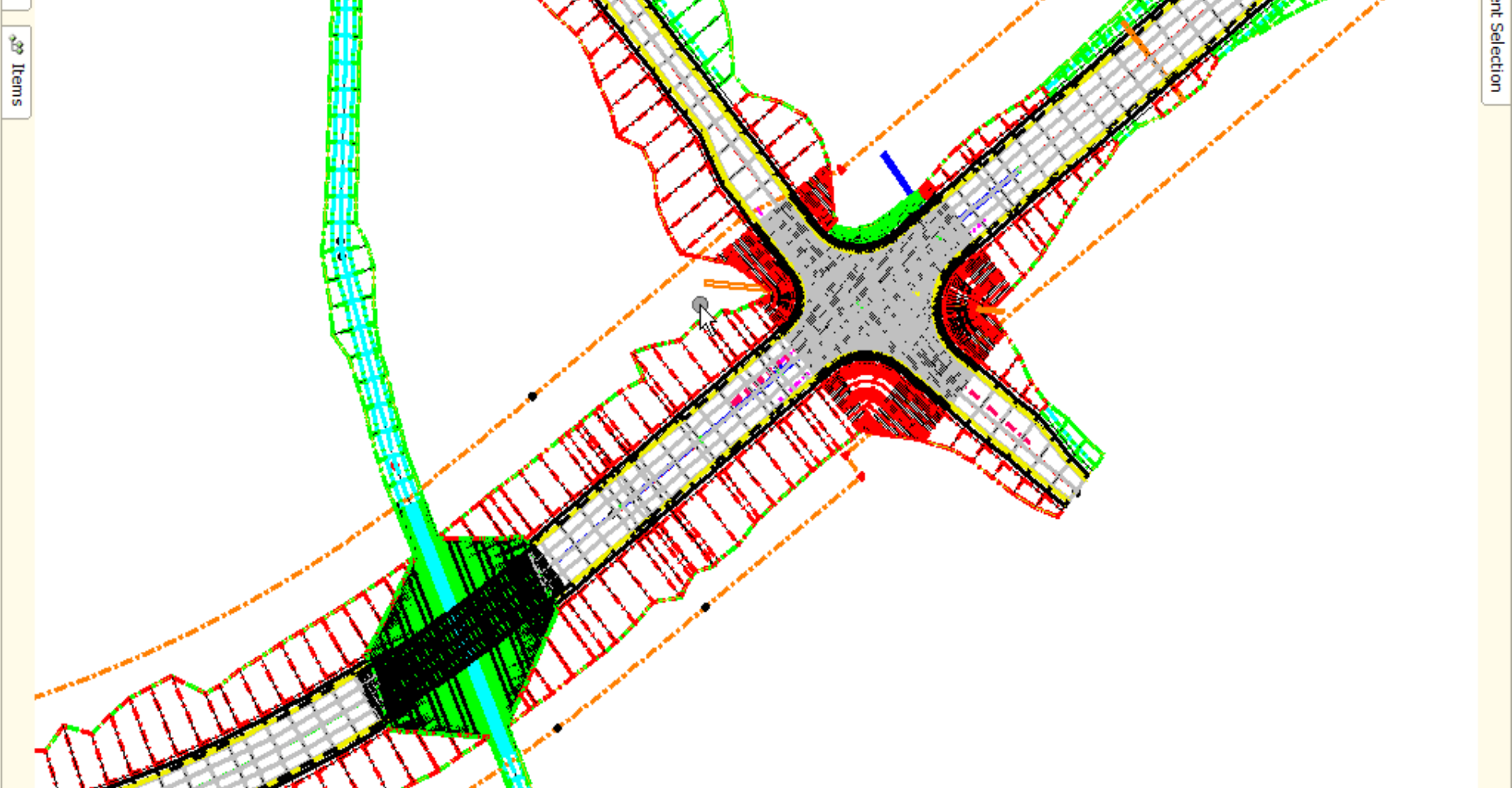
Tasks Items Details



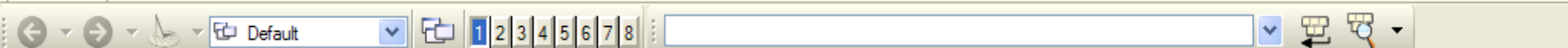
Pictures Views 1 2 3 4 5 6 7 8

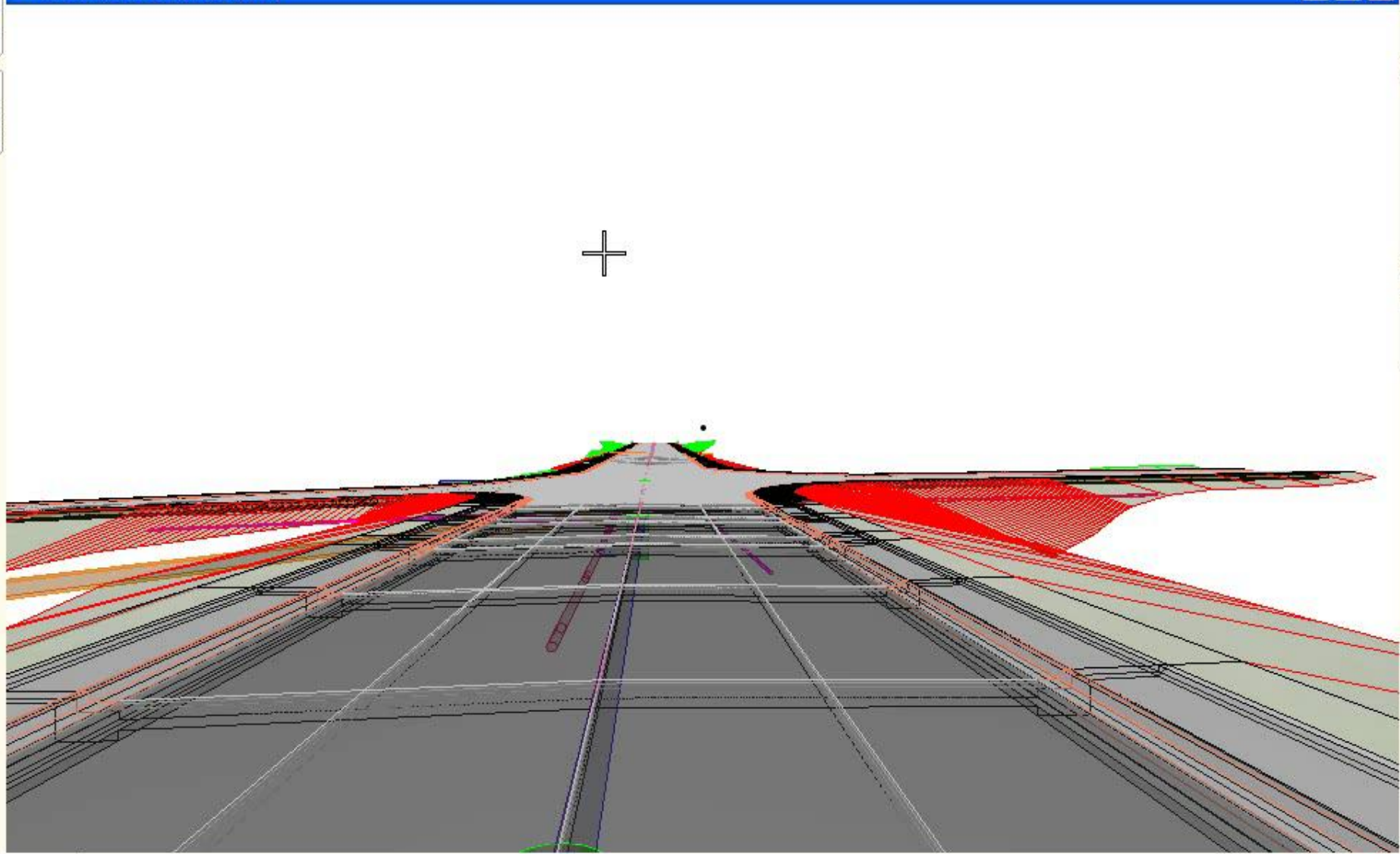


View 1 - Top, Default [Displayset]



Details

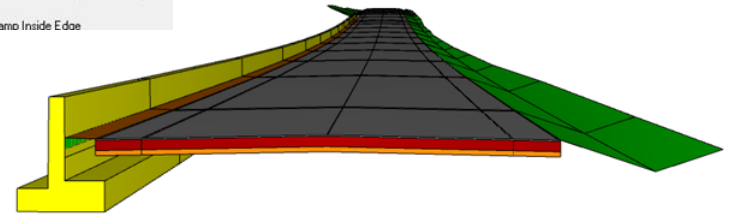
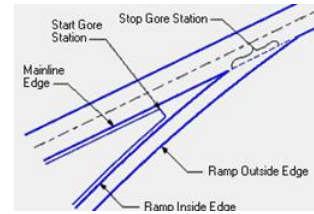




V8i (SELECTseries 1)

Bentley® GEOPAK® V8i
SELECTseries 1

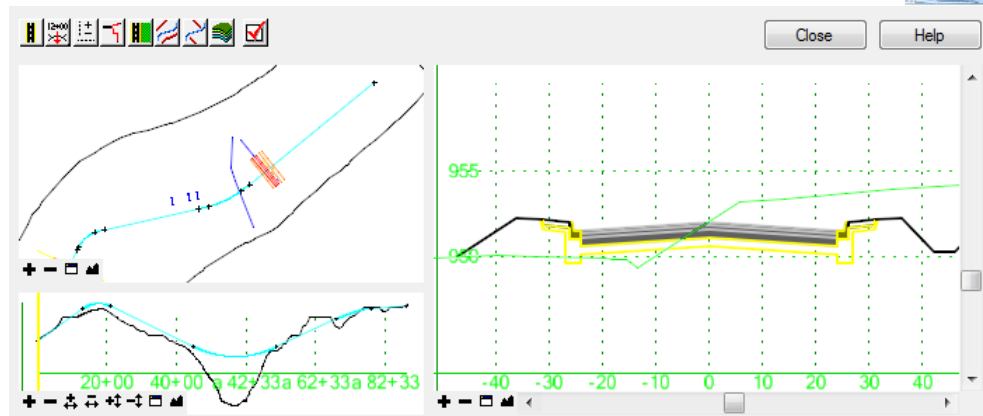
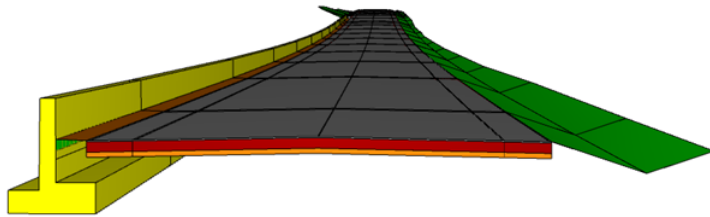
- More Roadway Designer
 - Integration and performance improvements
 - Remember, if one gets it, they all get it
- Vertical Gore Tool
 - Aid in ramp design
- Improved Model Creation
 - Supplements AMG
- Customer requests
 - Numerous items from your requests
- Components



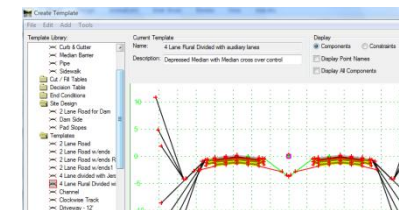
V8i (SELECTseries 1)

Bentley® MXROAD® V8i SELECTseries 1

- Roadway Designer - Now in all 3!
- ProjectWise Integration - Now in all 3!



ProjectWise® V8i SELECTseries 1

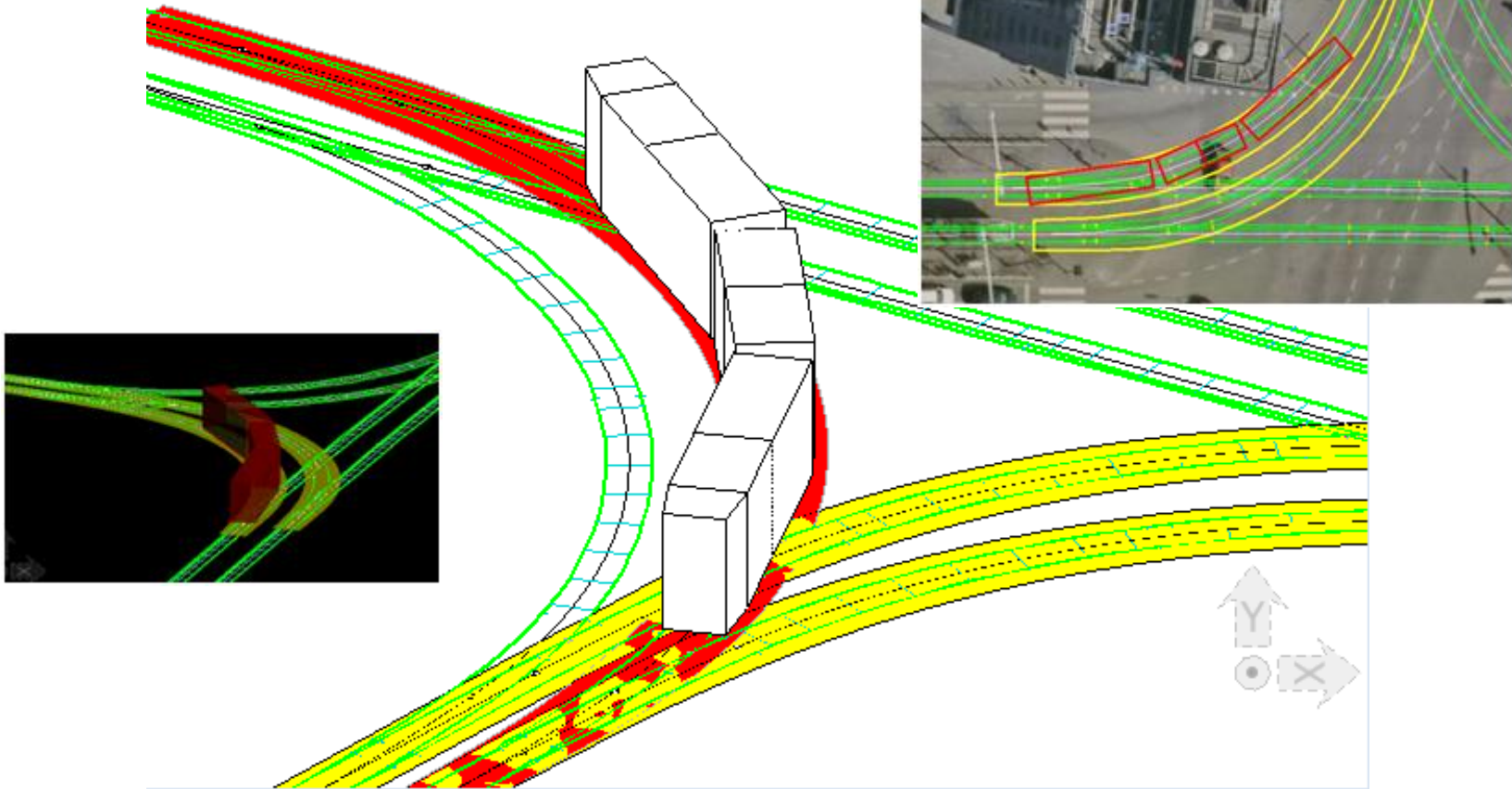


V8i (SELECTseries 1)

Bentley Rail Track V8i

SELECTseries 1

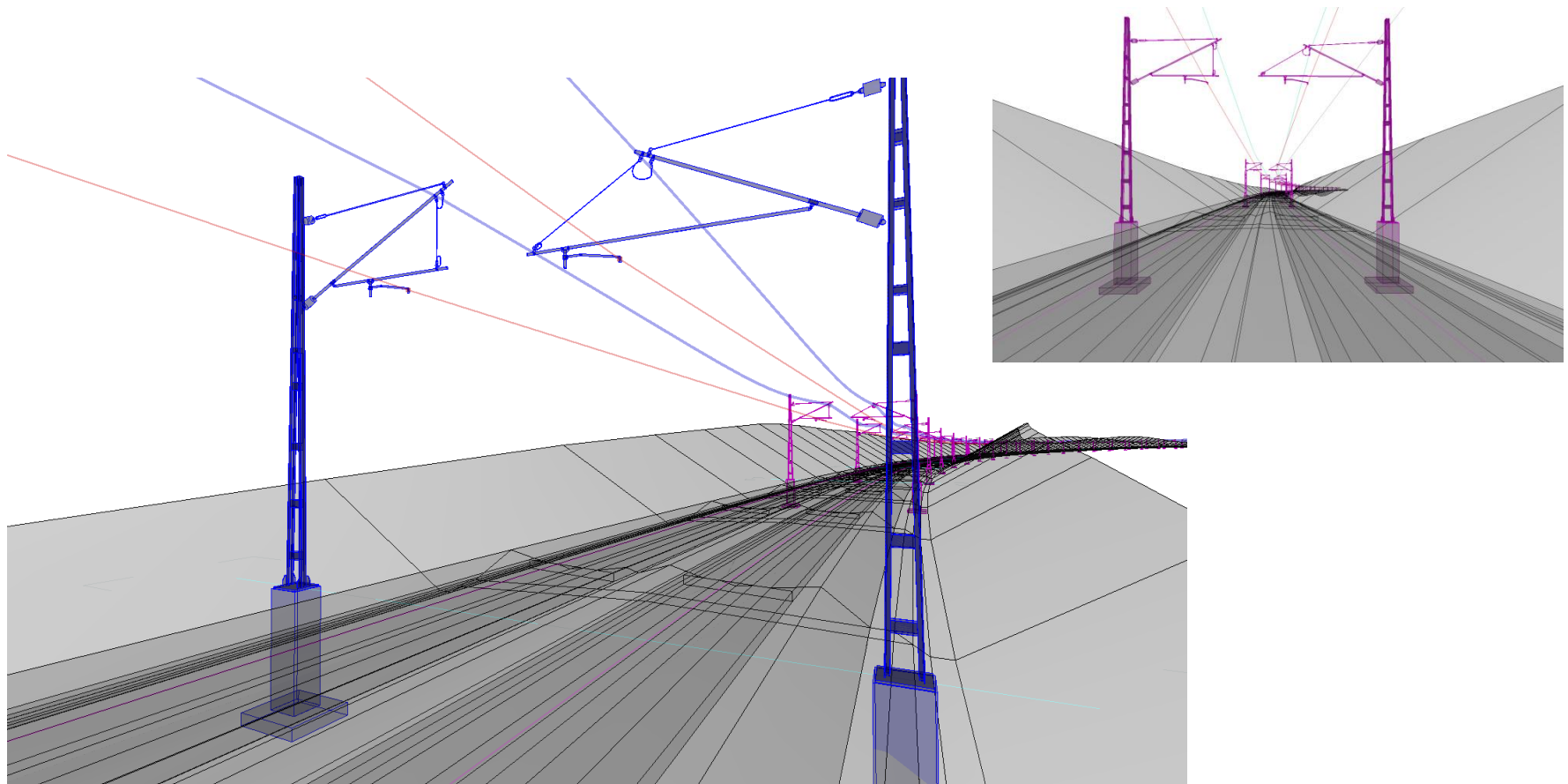
- Swept Path Analysis



V8i (SELECTseries 1)

Bentley Rail Overhead Line V8i
 SELECTseries 1

Modeling of Overhead Line Equipment along with the track and surface



Why Tomorrow?

So where does all this lead Bentley Civil?

Civil Engineering is more than graphics
transferred to paper plans

It's about integration

It's about interoperability

It's about distributive information

It's about a complete model

It's about modeling, Civil Information Modeling!

V8i (SELECTseries 1)



MicroStation® V8i SELECTseries 1

Protected by US and international copyright laws as described in "Help About"
Copyright (c) 2009, Bentley Systems, Inc.

November 2nd, 2009

V8i (SELECTseries 1)

Civil Beta Program

Plan to provide in the next week or so.

If interested, please contact:

Mike Wilson

Mike.Wilson@Bentley.com

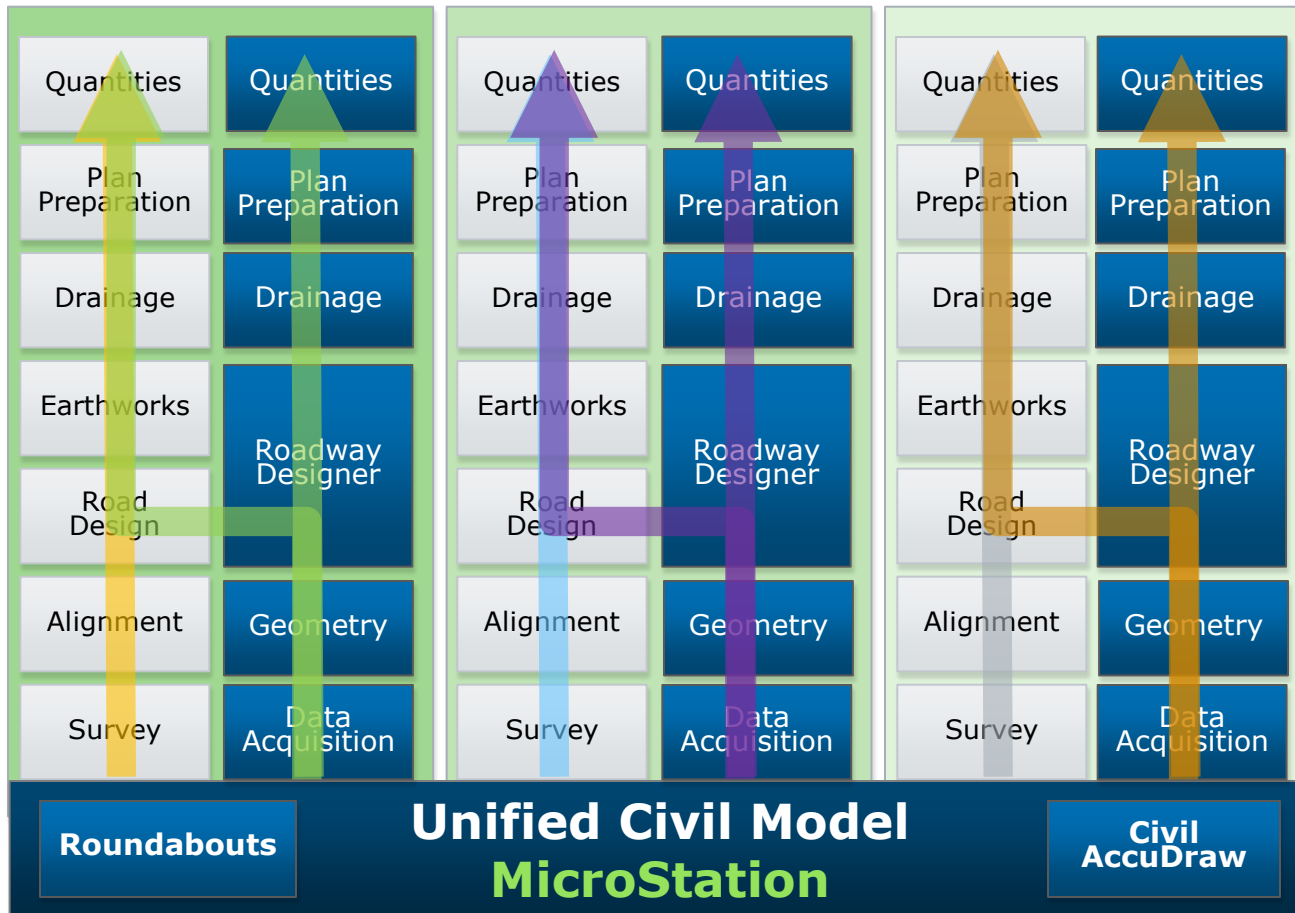
Bentley Civil Evolution

As Told
Since
2004

GEOPAK

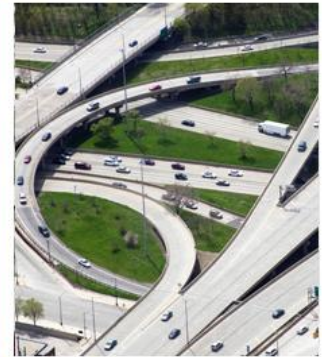
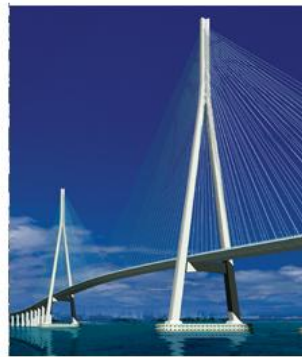
InRoads

MXROAD



- 20+ years of 3D Modeling and success in designing the worlds Civil infrastructure projects
- XM: Began the Evolution
- V8i: Began the Platform
- V8i (SELECTseries 1) : Consolidates the Modeling and Data Acquisition
- The Evolution will continue

NORDIC CIVIL 2009



Thanks!
Mike Wilson