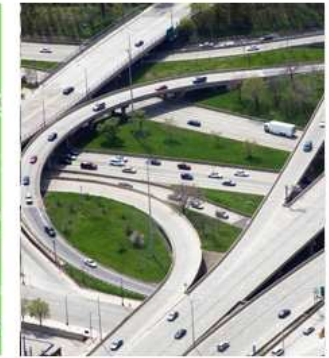


2009 ROADS AND BRIDGES CONFERENCE



Instant Visualization with Roadway Designer

Joe & Jerry

Why 3-D DTM Modeling?

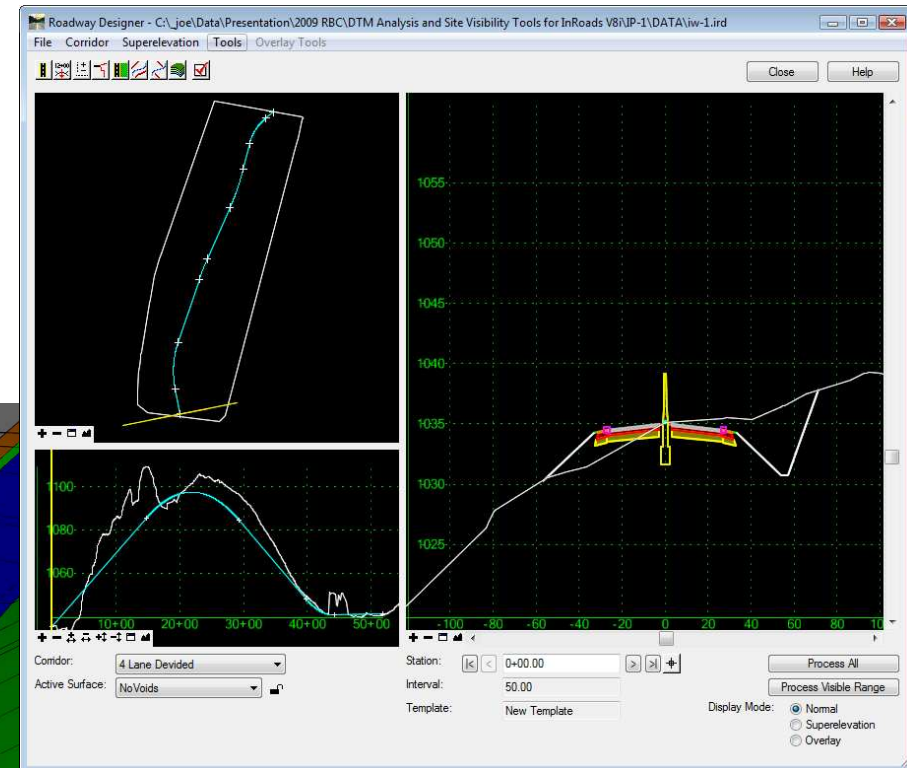
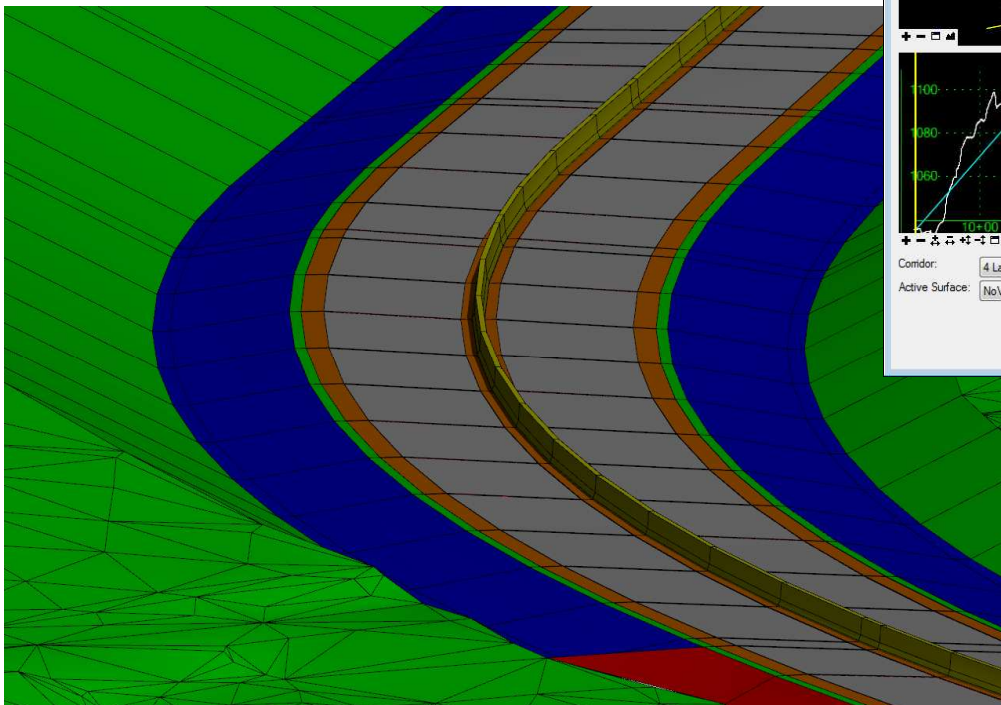
Value Proposition:

- Enhanced Presentation Material
- Improved Confidence of Design
- Generated by Application
- Machine Control
- Past, Present, & Future
- Visualization



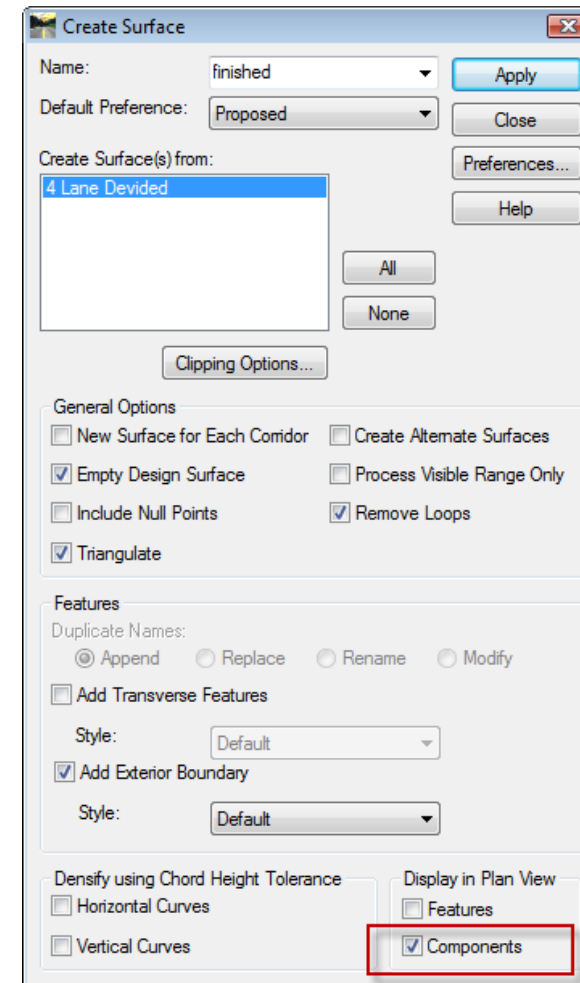
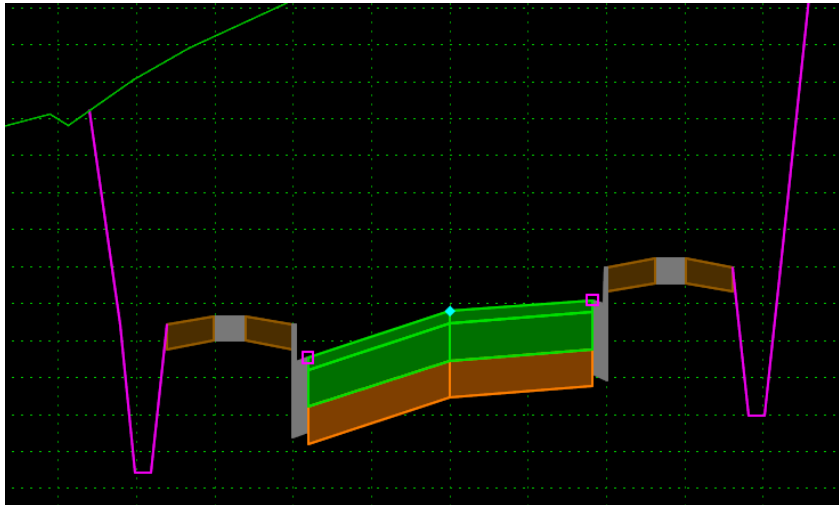
Components with Roadway Designer

- Roadway Designer
 - Interactive Interface
 - 3D Models

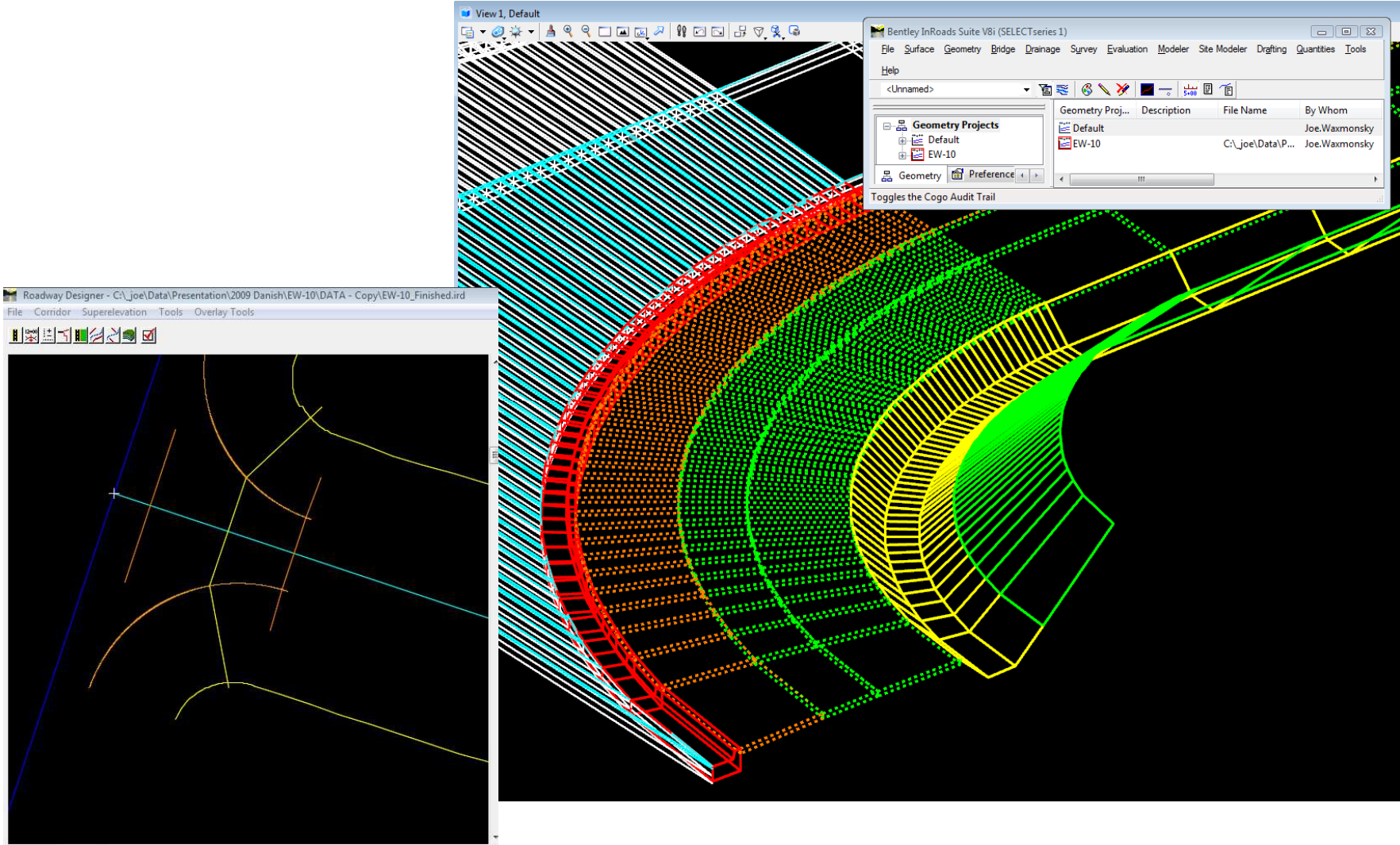


Components

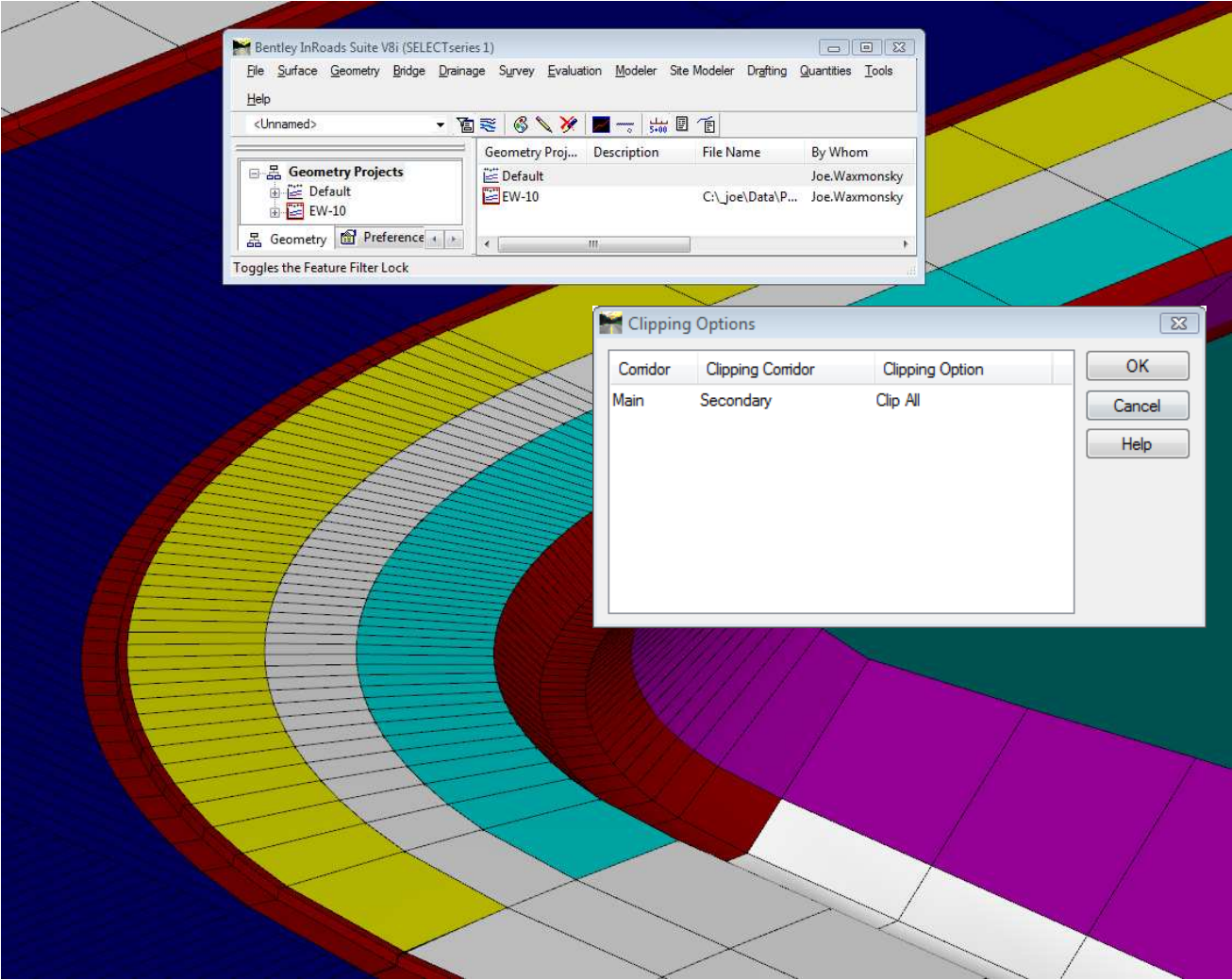
- Roadway Designer
 - Enhance Create Surface
 - Features
 - Components



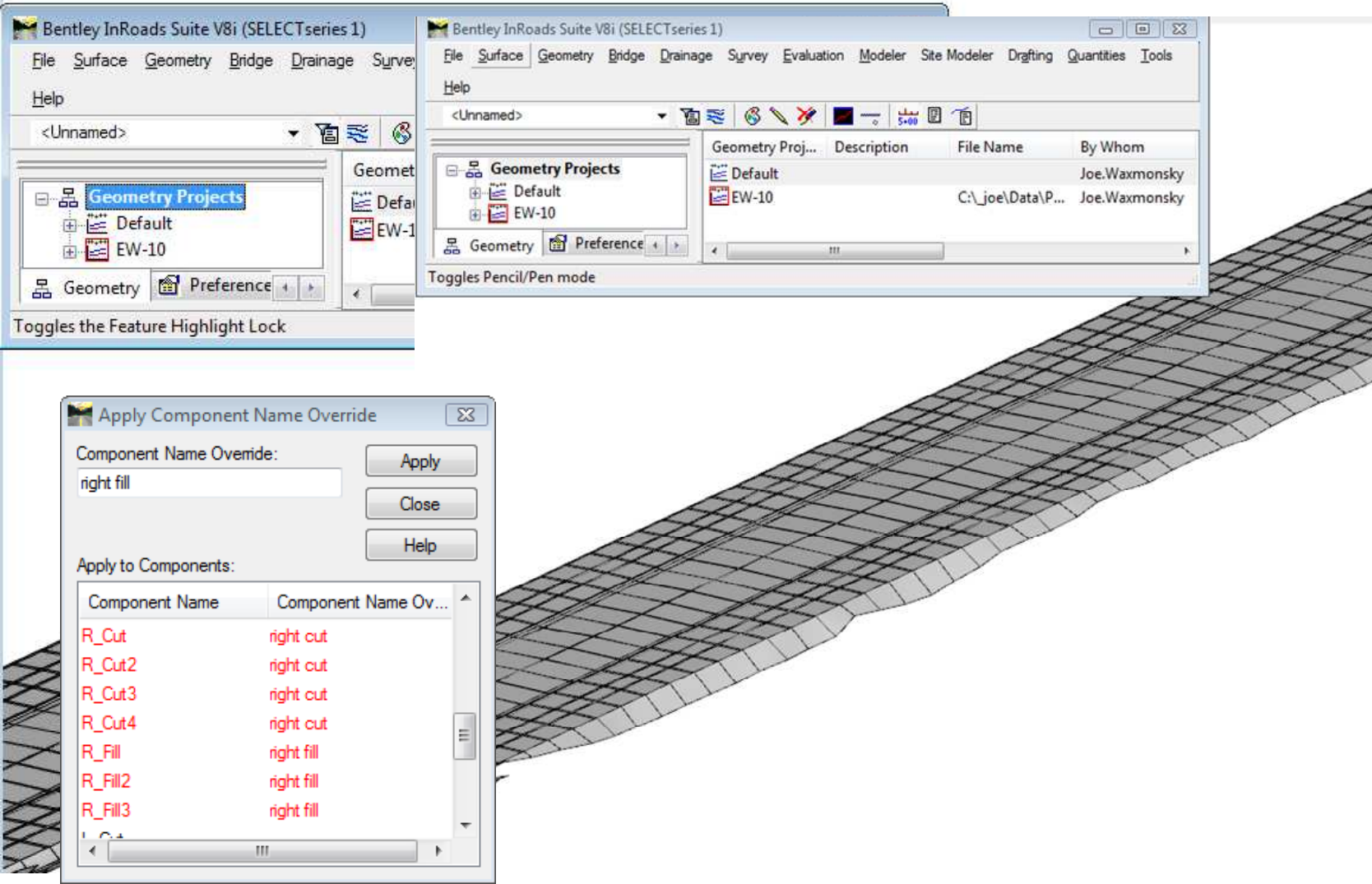
Components with Secondary Alignments



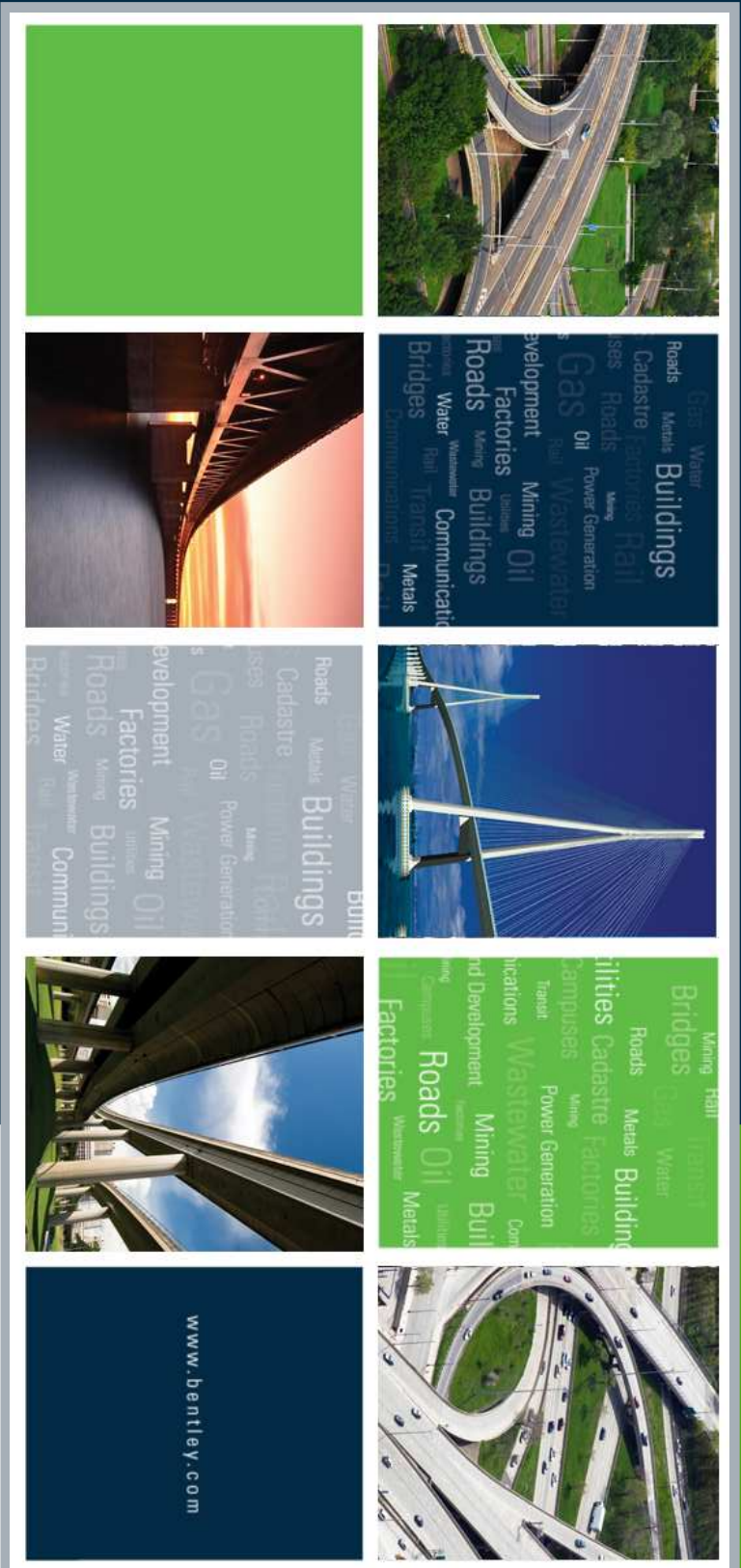
Components Clipping



Component Name Overrides



2009 ROADS AND BRIDGES CONFERENCE



Thank you!

Questions?