

Roadway Designer and Machine Control – What You Need to Know

Joe Waxmonsky, PE

What Is Machine Control

- Grade control automation via earth moving equipment outfitted with GPS\Total Station\ Laser Augmentation or a combination of the three.
- Can be accurate from .1 to .01 feet depending on sensors.
- Makes use of high quality design data to control the earth moving equipment.
- Eliminates the need for tedious layout.

Bentley's Role In Machine Control

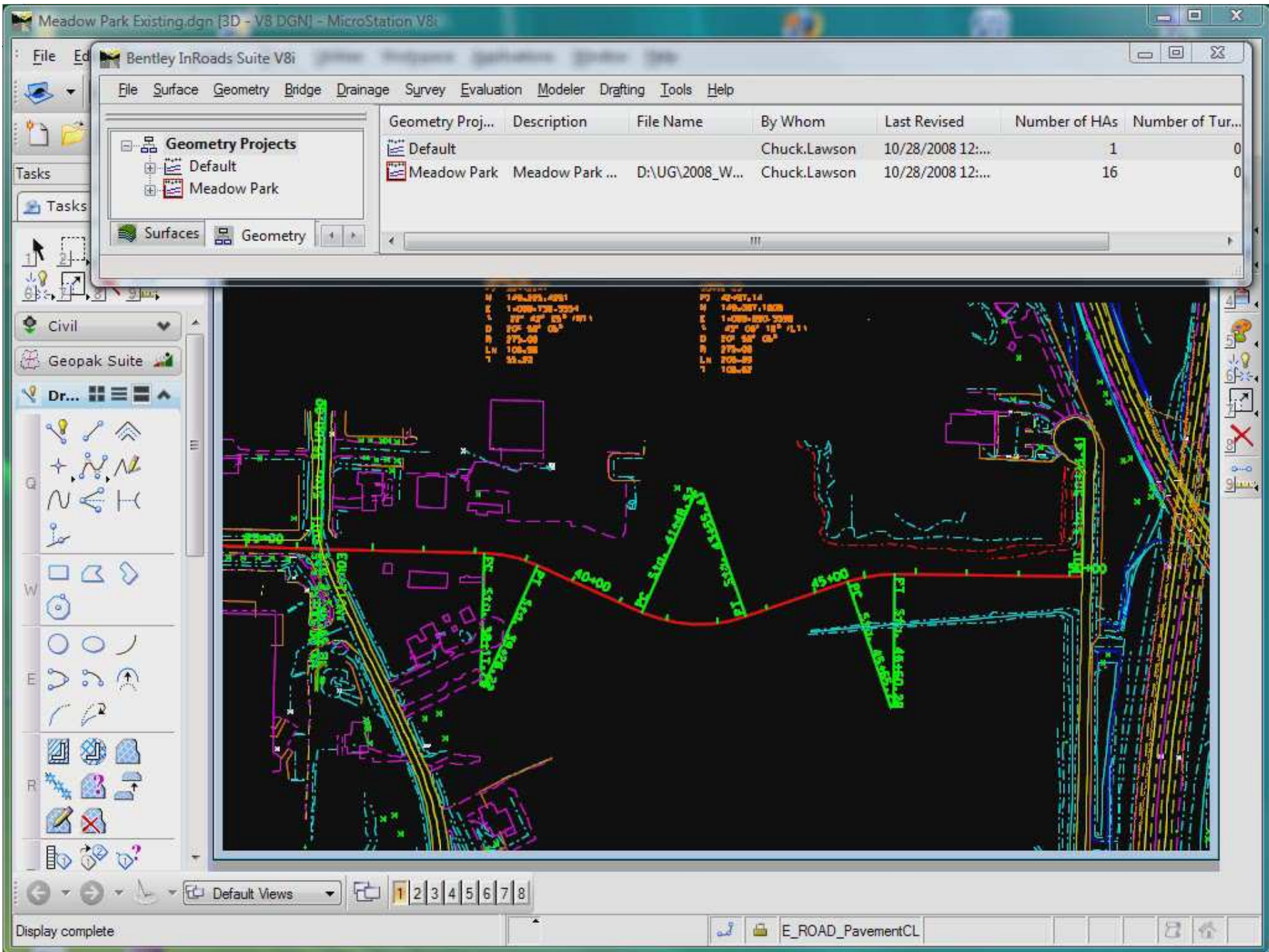
- Create and export the intelligent data to the contractor
- Types of data to export:
 - Surfaces
 - Geometry
 - Reports

Template Creation

- Continue the use of classic Template creation techniques
- Supplement with Alternate Surfaces
- Project to Design Constraints

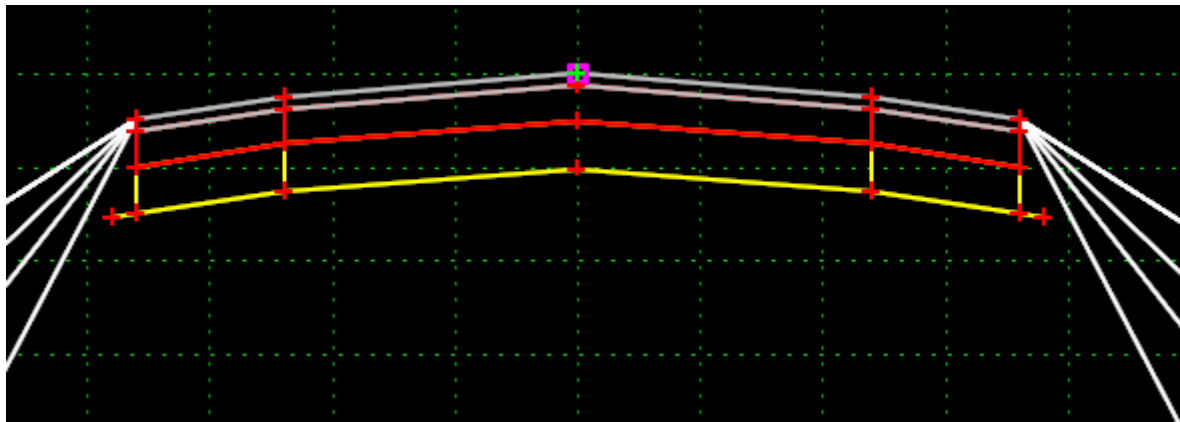
Design Project Introductions

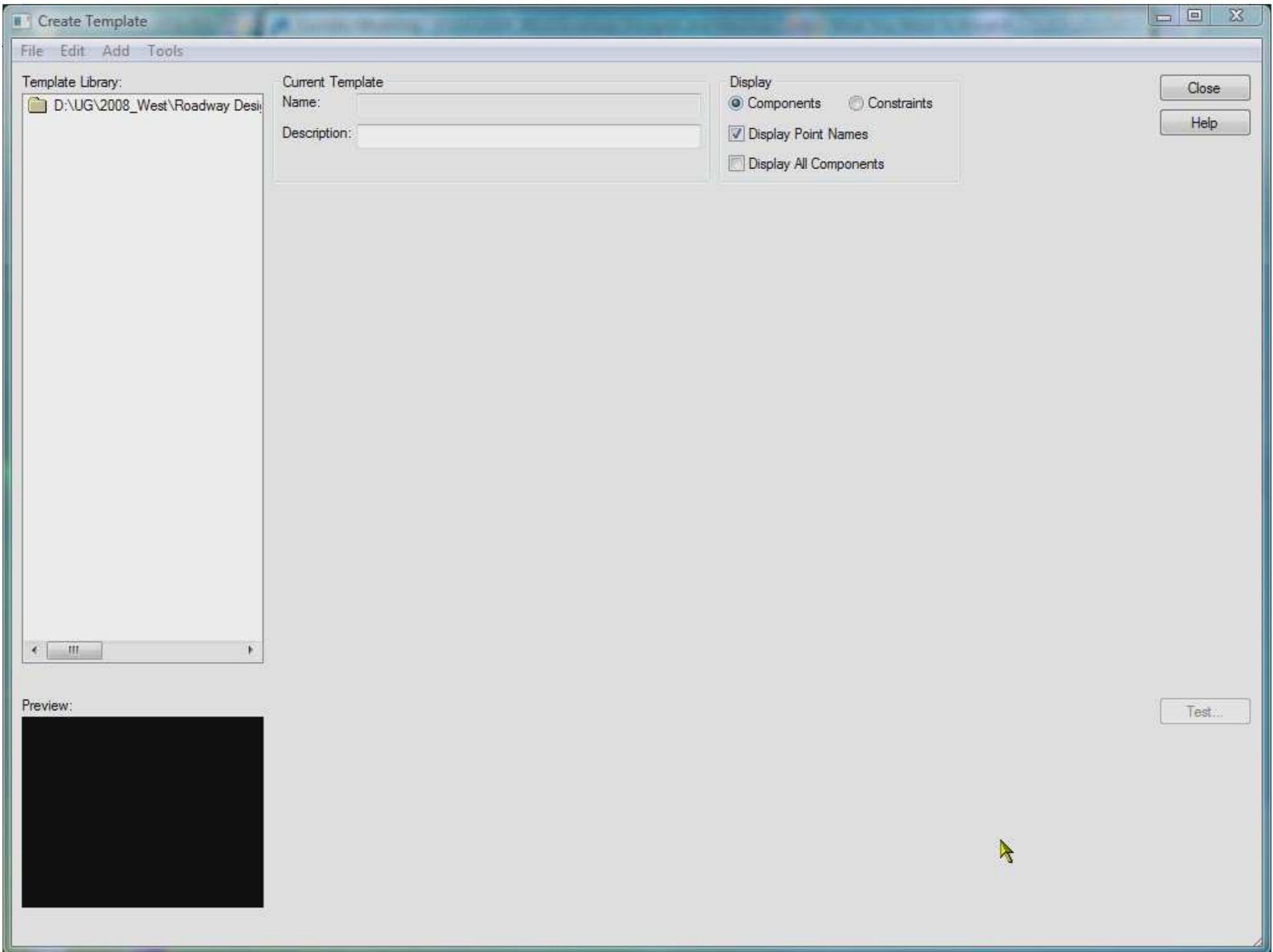
- Meadow Park Alignment
- Rural 2-Lane Roadway
- New Construction



Creating the Template

- 12' Travel Lane
- 6' Shoulder
- Variable Slope End Conditions





Template - Subgrade Extension

- Use “Vector – Offset” Constraint
- Use “Project To Design” Constraint
- Testing your changes

Create Template

File Edit Add Tools

Template Library:

- D:\UG\2008_West\Roadway Desi...
- Point Name List
- EndConditions
 - 25ft variable slope w/ retain
 - Benching Test
 - Rock Bench
 - Urban Slope w/ Sidewalk
 - Variable slopes
- Misc Components
- Pavements
 - 10' Shoulder
 - 12' Travel Lane
 - 16' Ramp
 - 6' Shoulder
- Templates
 - 16' Ramp Lt
 - 16' Ramp Rt
 - 2 Lane CG
 - 2 Lane urban Rock and RV
 - 4 Lane divided with Jersey I
 - 4 Lane Rural Divided with a
 - 5 Lane CG urban
 - 5 Lane CG widening
 - 2 Lane Rural w/ Alternate
- Typicals w/ parametric labels

Current Template

Name: 2 Lane Rural w/ Alternate

Description:

Display

- Components Constraints
- Display Point Names
- Display All Components

Close

Help

Preview:

D:\UG\2008_West\Roadway Designer and Machine Control What You Need To Know\8.9MachineControl\Default Templates.itl Saved

Template – Adding an Alternate Surface

- Each point property along the desired machine control sub-surface path needs to activate the the Alternate Surface option by assigning an alternate surface name.
- Alternate surface name must be consistent.
- No vertical lines allowed in the alternate surface path.
- Alternate surface will not show in testing, but only in surface creation.

Create Template File Edit Add Tools

Template Library:
 D:\UG\2008_West\Roadway Design

- Point Name List
- EndConditions
- Misc Components
- Pavements
- Templates
- 16' Ramp Lt
- 16' Ramp Rt
- 2 Lane CG
- 2 Lane Rural w/ Alternate
- 2 Lane urban Rock and RW
- 4 Lane divided with Jersey bar
- 4 Lane Rural Divided with auxi
- 5 Lane CG urban
- 5 Lane CG widening
- Typical w/ parametric labels

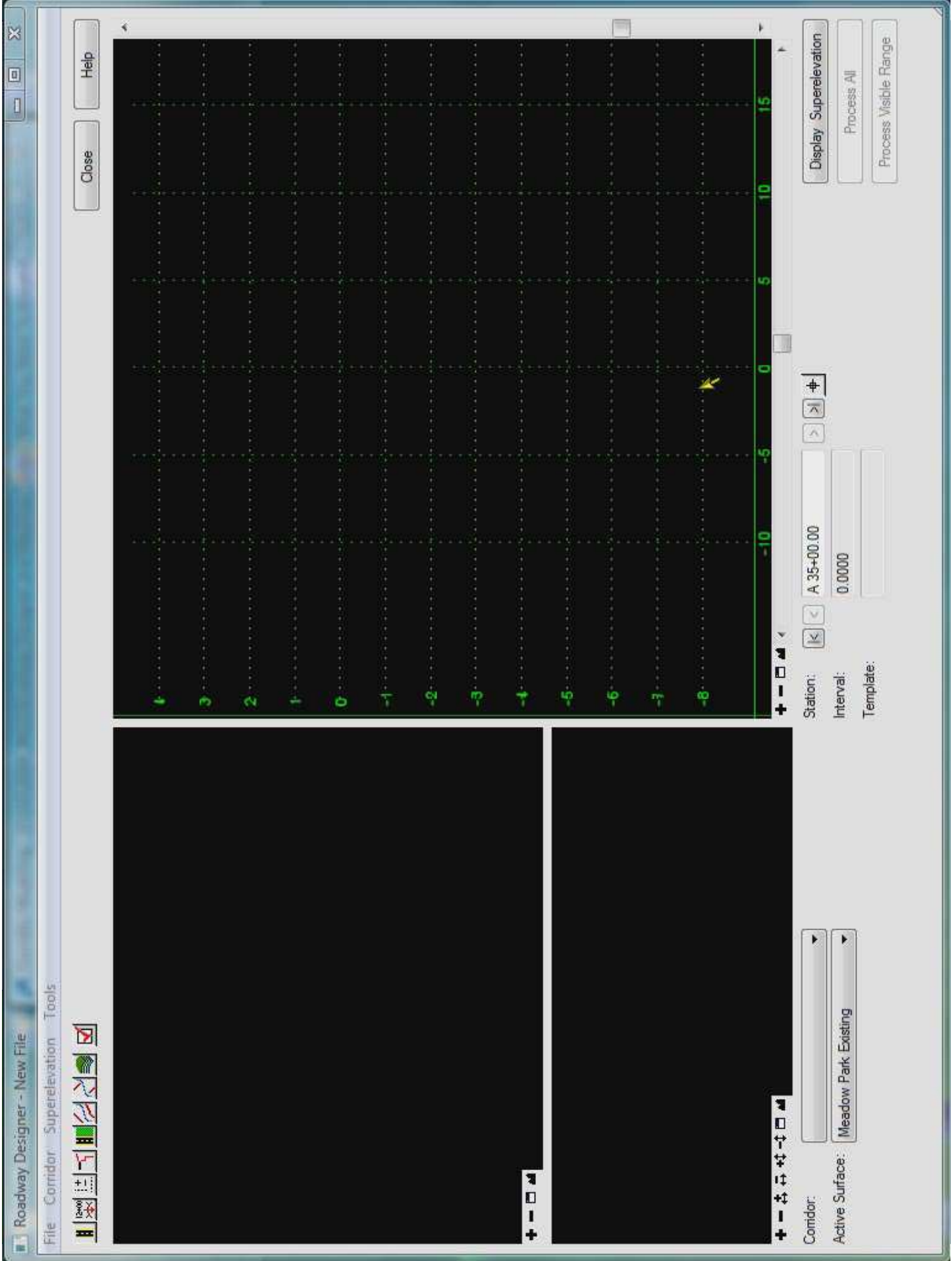
Current Template
 Name: 2 Lane Rural w/ Alternate
 Description:

Display
 Components Constraints
 Display Point Names
 Display All Components

Preview:

Creating the Corridor

- Rural undivided pavement w/ shoulders
- 10' interval drop for template
- Superelevation
- Shoulder roll-over at 4% max

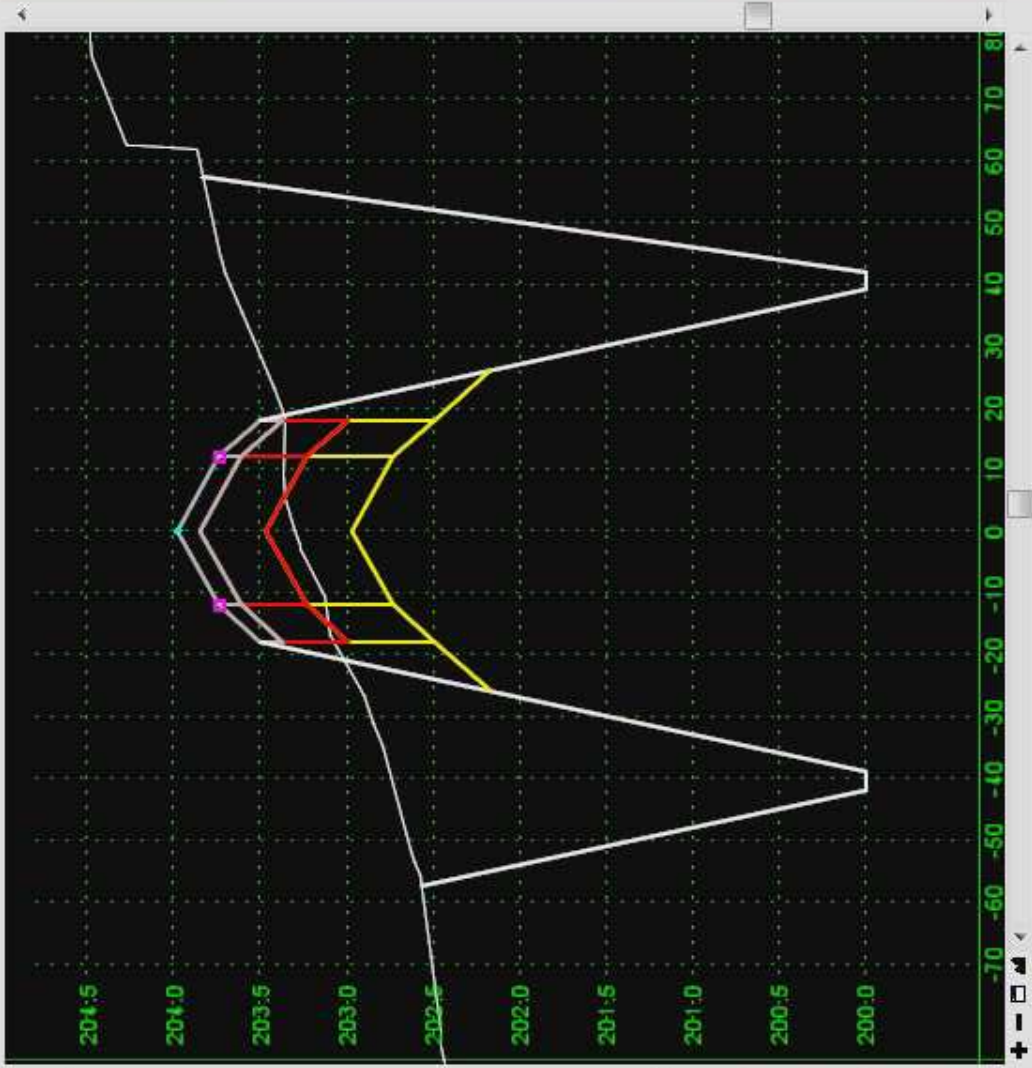


Proposed / Alternate Surface Creation

- Turn on the Cardinal and Control Points
- Turn on option for Alternate Surface
- Creates proposed surface and alternate at the same time
- Generates LandXML files of surfaces



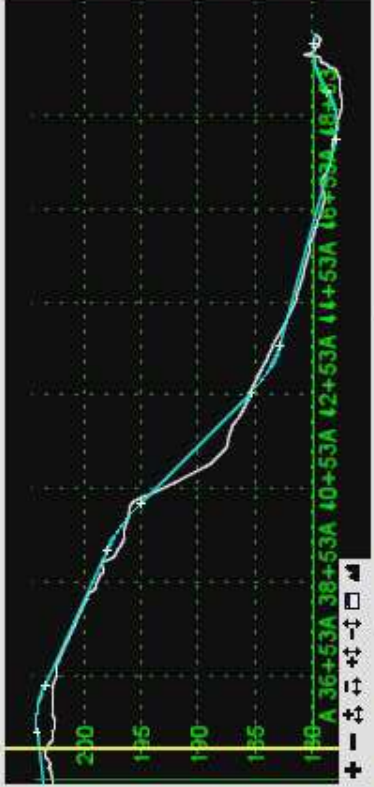
Close Help



Display Superlevation
Process All
Process Visible Range

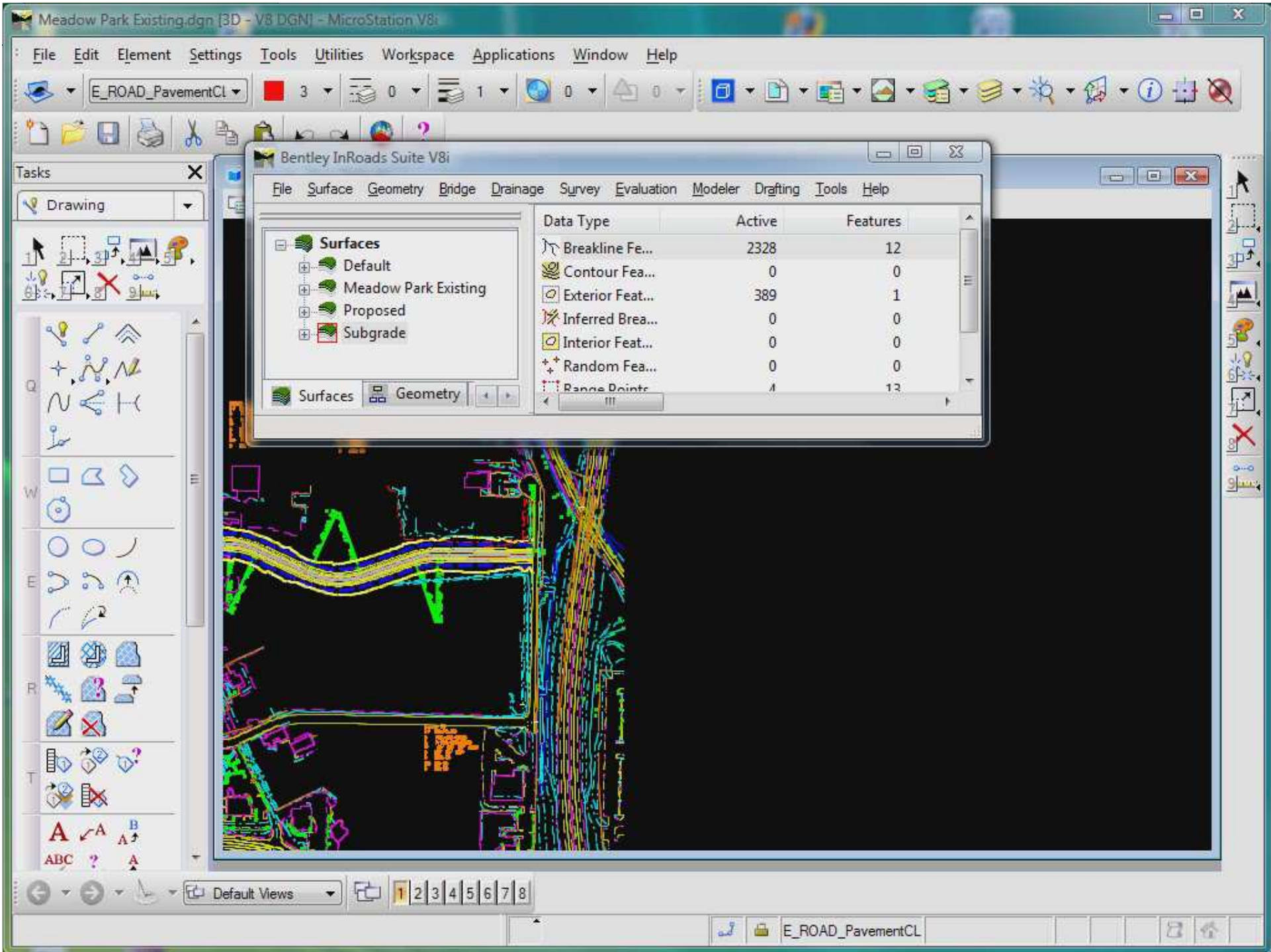
Station: A 35+00.00
Interval: 10.0000
Template: 2 Lane Rural w/ Alternat

Corridor: Meadow Park
Active Surface: Meadow Park Existing



Reviewing the Cross Sections

- Two new surfaces now available → Proposed and the alternate Subgrade surface
- Set different styles for the two surfaces to easily distinguish the differences
- Leave components turned off initially to only compare the surfaces



Exporting Data

- Need to activate the Translators in InRoads
- Trimble, Leica, LandXML formats...
- Don't forget to toggle on the "Surface" option

Bentley InRoads Suite V8i

File Surface Geometry Bridge Drainage Survey Evaluation Modeler Drafting Tools Help

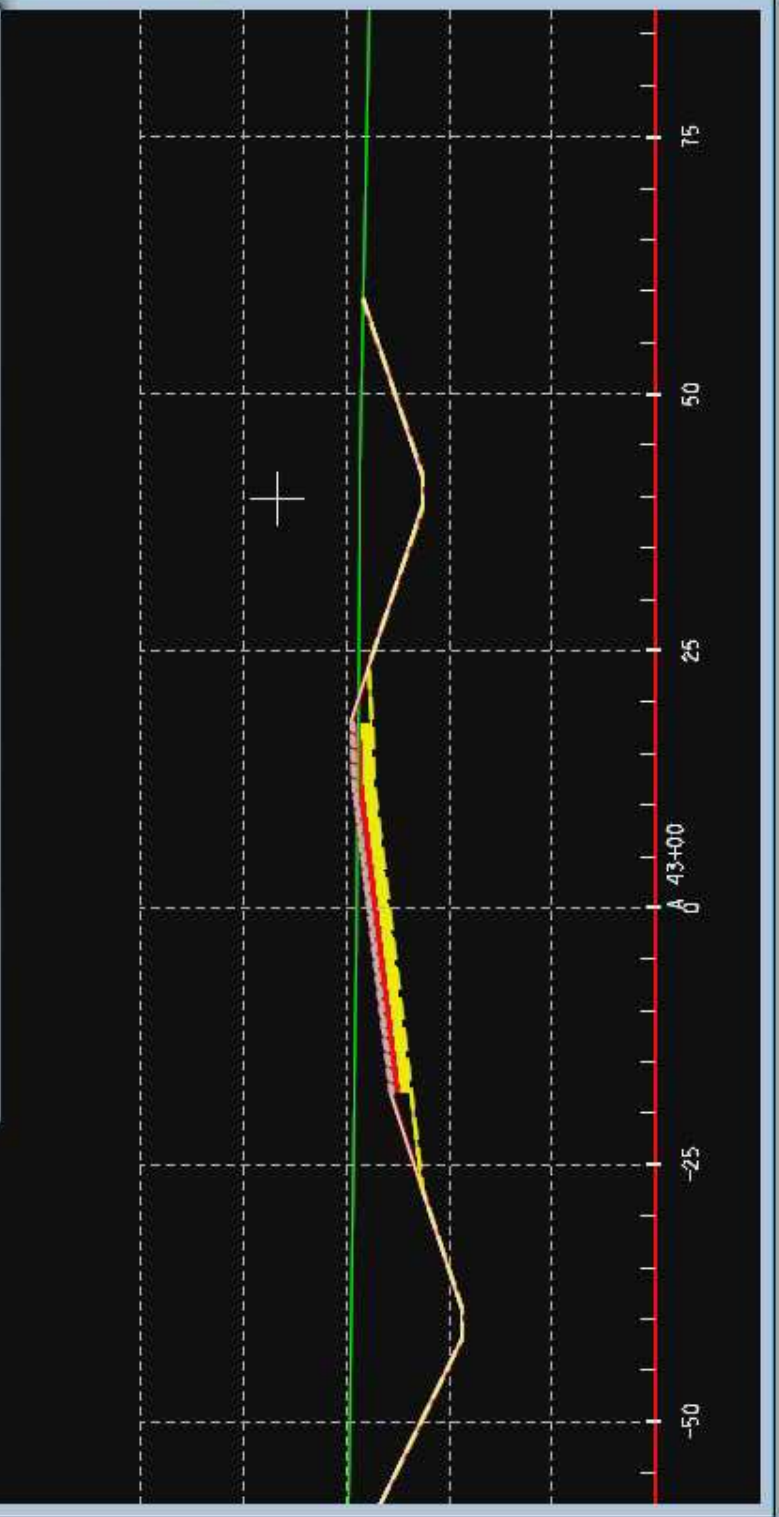
Data Type	Active	Features
Breakline Fe...	2328	12
Contour Fea...	0	0
Exterior Feat...	389	1
Inferred Brea...	0	0
Interior Feat...	0	0
++ Random Fea...	0	0
... Pane Draine...	4	13

Surfaces

- Default
- Meadow Park Existing
- Proposed
- Subgrade

Surfaces Geometry

Imports ASCII data into surface or geometry projects



Questions?