

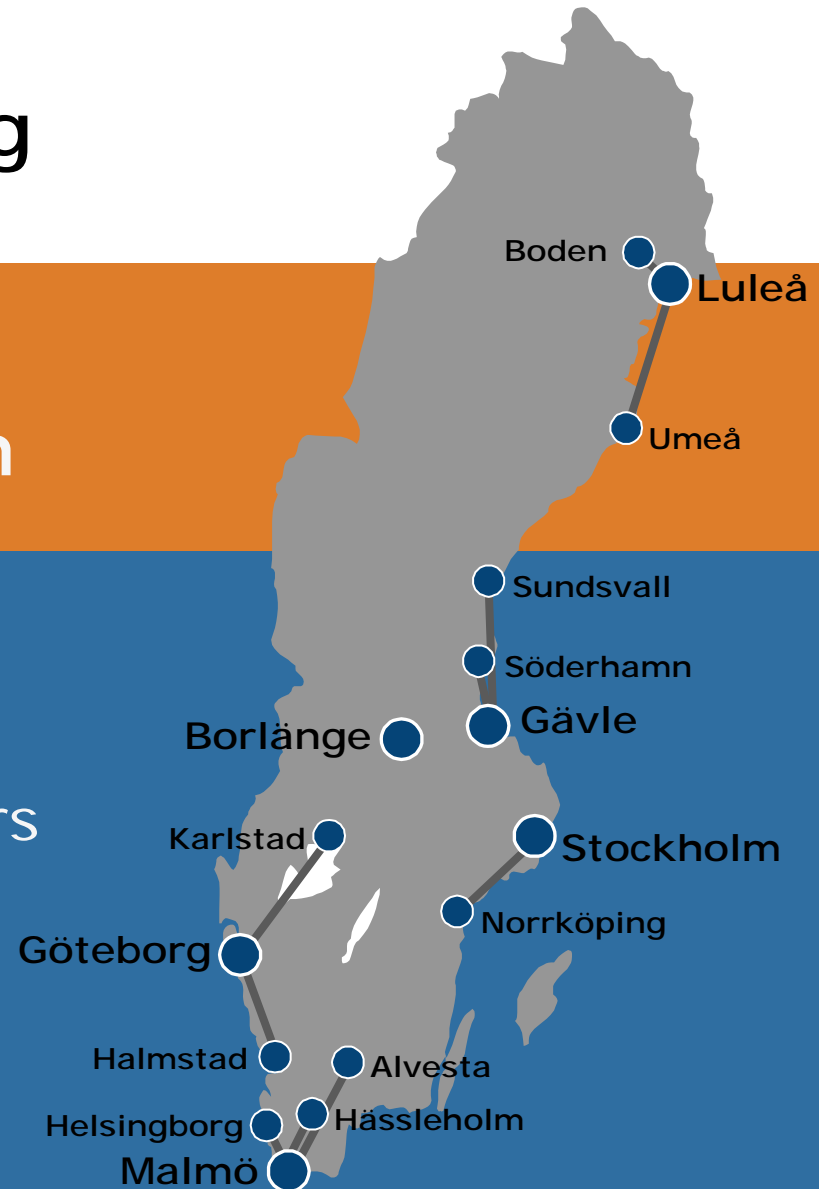
# *Bentley Rail - Overhead Line*



# Banverket Consulting

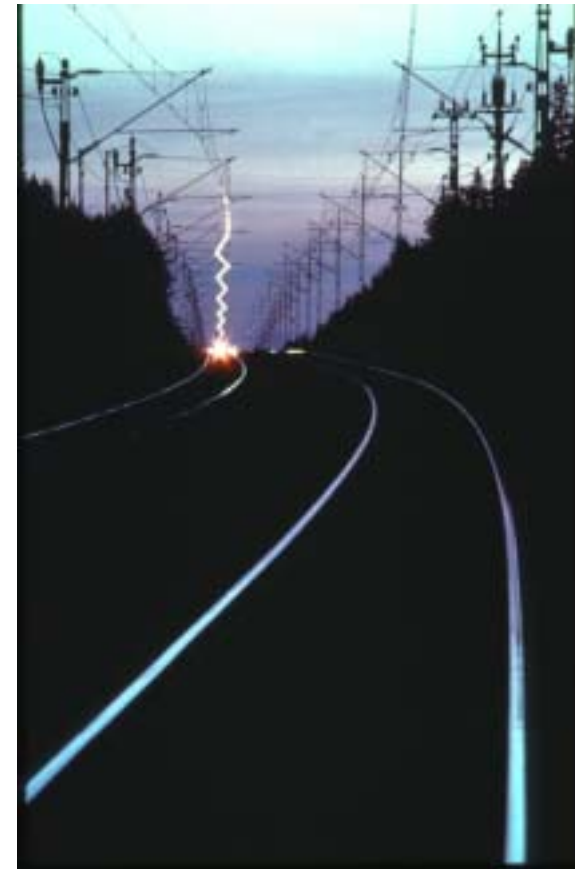
The leading railway consultant in Sweden

We create proceeds and development for our customers with our unique railway competence and longterm relations



# Background

- Cooperation between Bentley and Banverket Consulting
- Our aim was to assist in the creation of a commercial off the shelf (COTS) application but to have a strong influence in its creation
- We were dependent on a small supplier
- There were no suitable alternative for OL design in the Swedish market



# Why?

- Quality
- Added value for customers
- Faster
- 'Soft values'



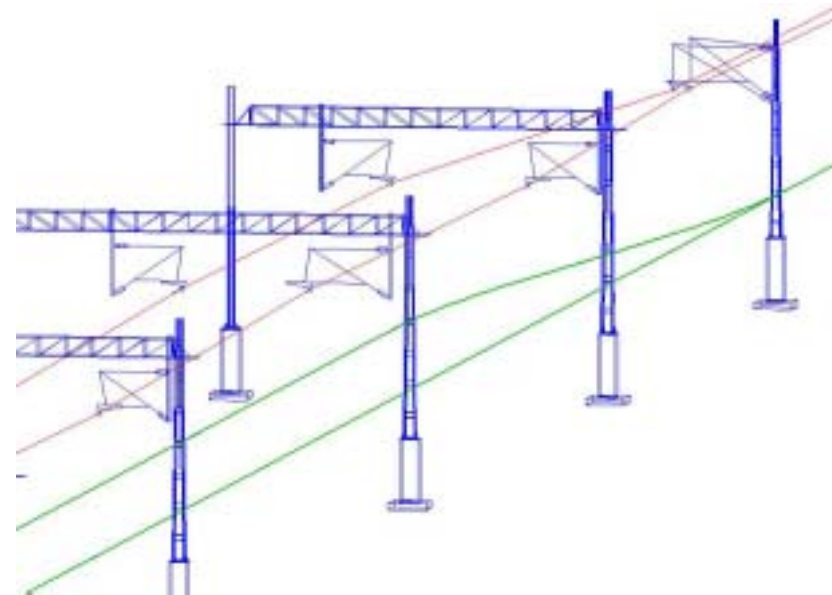
# Swedish customisations

- Swedish standards and calculation rules
- Drawings and reports
- Import and export format
- Object library



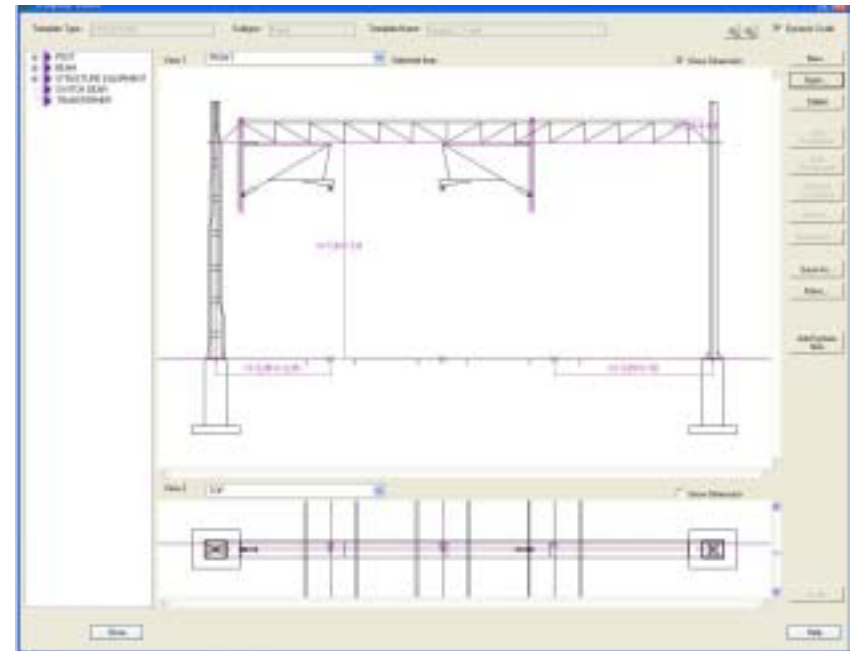
# Design tools

- "Version 1"
- Dialogue with Bentley about improvements
- Feedback from pilot project

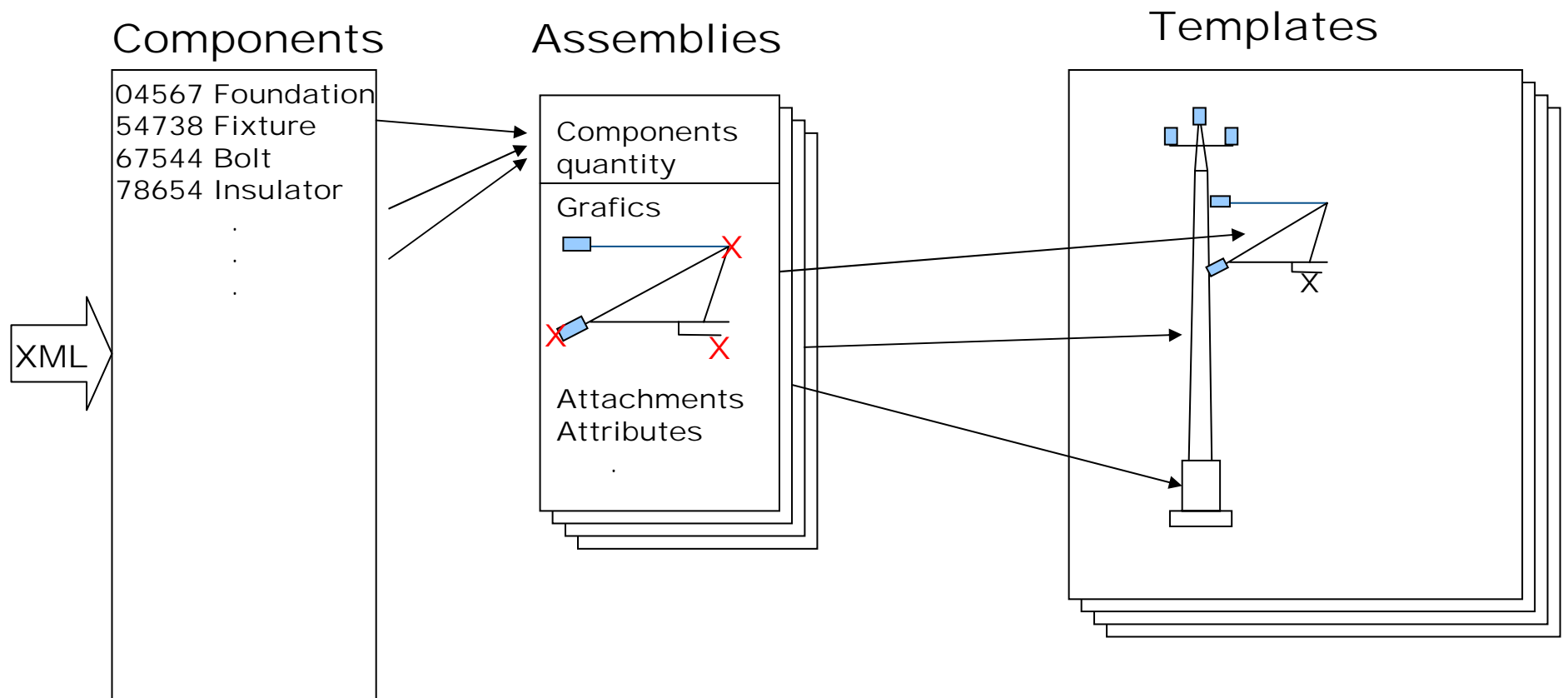


# Object library

- Information management
- Modularisation
- Benefit for the complete process  
(planning – design - build – maintain)



# Object library





# Object library issues

- Find and compile information
- Detail level - alternatives
- Updates



# What's up?

- Improved tools for managing the object library
- Improved drawing production tools
- Section overlap tool



# Demonstration