

# Design, visualize and share in City Infrastructure Projects

*Håkan Engman*

*Director, Business Development*

*OpenCities Planner*

# What challenges do cities face?

- Urban development
- Resilience and safety
- Improve services to citizens
- Openness and transparency



**CAMPUSES**

- Map
- Descartes
- AECOsim
- RAM
- STAAD
- OpenRoads
- gINT
- SITEOPS
- ContextCapture
- LumenRT
- Haestad
- OpenUtilities
- Communications
- OpenSite
- PLAXIS

**MINING**

- MineCycle
- OpenPlant
- STAAD
- Promis.e
- Map
- Descartes
- ContextCapture
- OpenRoads
- OpenRail
- gINT
- Haestad
- PLAXIS
- SoilVision

**ROADS**

- OpenRoads
- OpenBridge
- gINT
- Descartes
- SITEOPS
- ContextCapture
- LumenRT
- Map
- Haestad
- SUPERLOAD
- OpenSite
- PLAXIS

**WATER & WASTEWATER**

- Haestad
- OpenPlant
- AECOsim
- STAAD
- RAM
- gINT
- OpenUtilities
- OpenRoads
- Descartes
- ContextCapture
- PLAXIS

**BUILDINGS**

- AECOsim
- RAM
- STAAD
- ProStructures
- speedikon
- gINT
- OpenRoads
- OpenUtilities
- Communications
- Haestad
- ContextCapture
- LumenRT
- Descartes
- PLAXIS

**CITIES**

- Map
- Descartes
- OpenRoads
- OpenRail
- OpenUtilities
- Communications
- AECOsim
- ContextCapture
- LumenRT
- SITEOPS
- OpenSite
- ACTION Flood

**NUCLEAR POWER**

- AutoPIPE
- OpenPlant
- AECOsim
- STAAD
- SITEOPS
- Descartes
- ContextCapture
- OpenSite

**BRIDGES**

- OpenBridge
- OpenRoads
- gINT
- ProStructures
- ContextCapture
- LumenRT
- LARS
- Descartes
- PLAXIS

**COMMUNICATIONS NETWORKS**

- Communications
- STAAD
- Descartes
- ContextCapture

**POWER PLANTS**

- OpenPlant
- AutoPIPE
- Promis.e
- STAAD
- ProStructures
- AECOsim
- gINT
- Descartes
- ContextCapture
- OpenRoads
- ConstructSim
- PLAXIS

**PROCESS PLANTS**

- OpenPlant
- AutoPIPE
- AutoPIPE
- PlantWise
- Promis.e
- AECOsim
- ProStructures
- STAAD
- gINT
- OpenRoads
- SITEOPS
- ContextCapture
- LumenRT
- Descartes
- ConstructSim
- OpenSite
- PLAXIS

**OFFSHORE STRUCTURES**

- SACS
- MOSES
- MAXSURF
- AutoPIPE
- ProSteel
- ConstructSim
- OpenPlant
- gINT
- ContextCapture
- Descartes
- PLAXIS

**WIND FARMS**

- SACS
- MOSES
- MAXSURF
- AutoPIPE
- ProSteel
- ConstructSim
- OpenPlant
- gINT
- ContextCapture
- Descartes
- PLAXIS

**RAIL & TRANSIT**

- OpenRail
- OpenBridge
- gINT
- Promis.e
- SITEOPS
- ContextCapture
- Descartes
- LumenRT
- Map
- AECOsim
- STAAD
- RAM
- ComplyPro
- Substation
- OpenSite
- PLAXIS

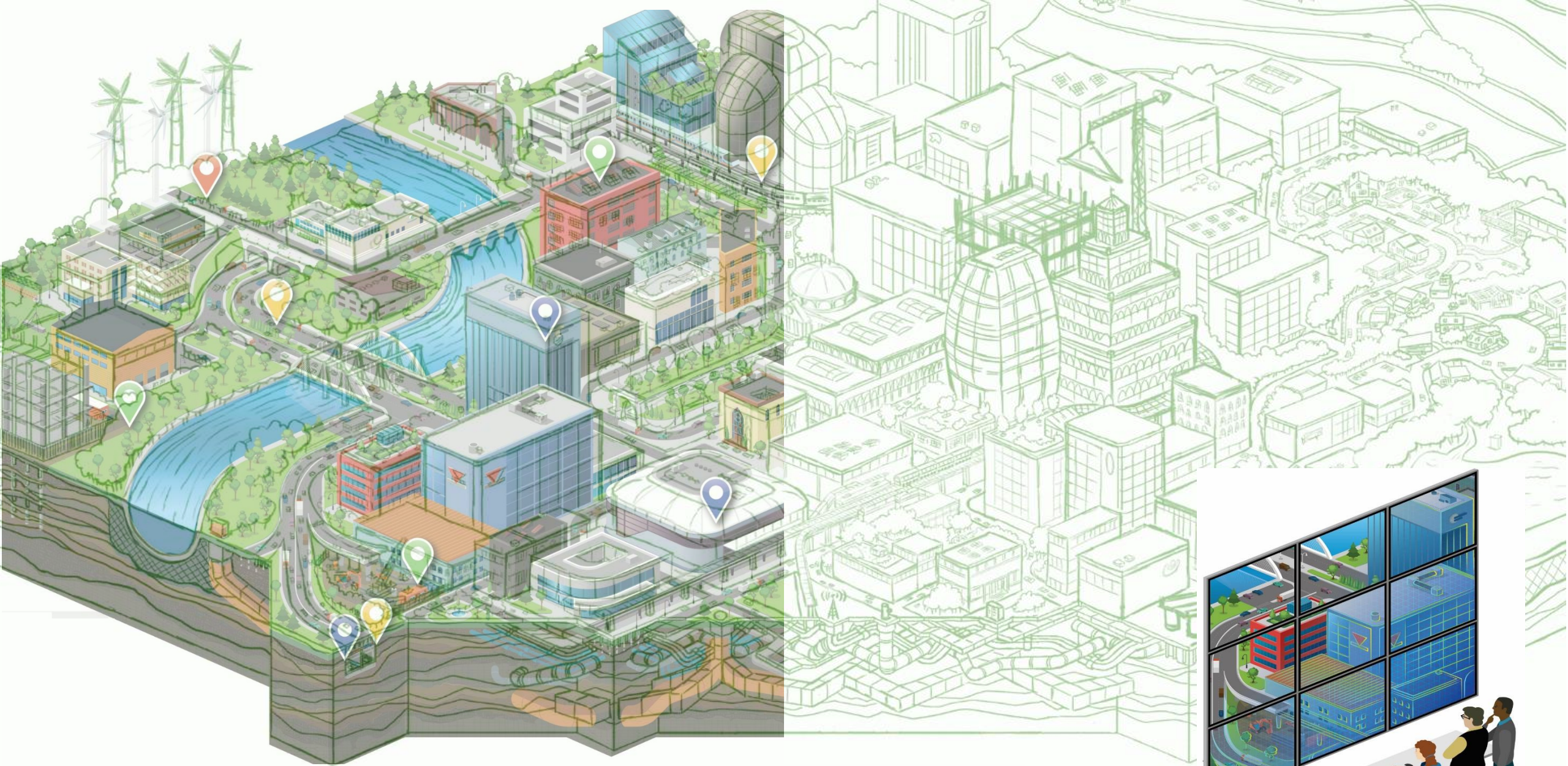
**CONSTRUCTION**

- Navigator
- ConstructSim
- ProStructures
- AECOsim
- Descartes
- OpenRoads
- SITEOPS
- ContextCapture
- LumenRT
- OpenSite
- PLAXIS
- SoilVision

**UTILITY NETWORKS**

- OpenUtilities
- Communications
- Substation
- Haestad
- STAAD
- Descartes
- SITEOPS
- ContextCapture
- LumenRT
- OpenSite

## Application Playbooks



Operations/IoT  
Data



Engineering  
Data



Surveying and  
Mapping Data



3rd Party  
Infrastructure Data



3rd Party  
Developer Data



Emergency  
Services Data



Other  
Data

An aerial photograph of a city, likely Tokyo, showing a dense urban grid and a winding river. A semi-transparent blue horizontal bar is overlaid across the middle of the image, containing the text 'CAPTURED REALITY' in white capital letters.

# CAPTURED REALITY

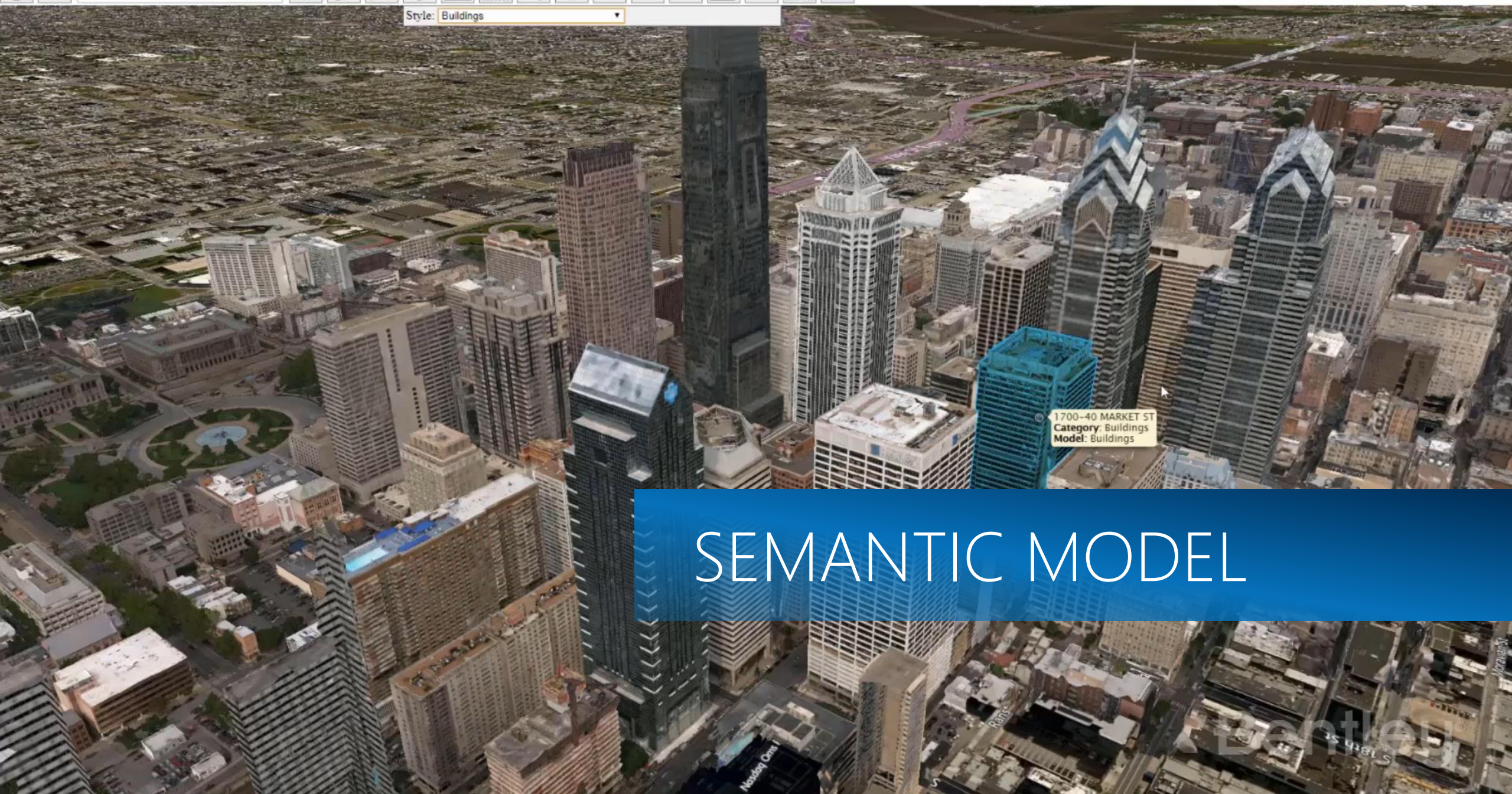
Aerial/Ground images courtesy of Imao/IGN





Default - View 2

Style: Buildings



# SEMANTIC MODEL



Home

Bentley Systems Inc

Assets

Projects

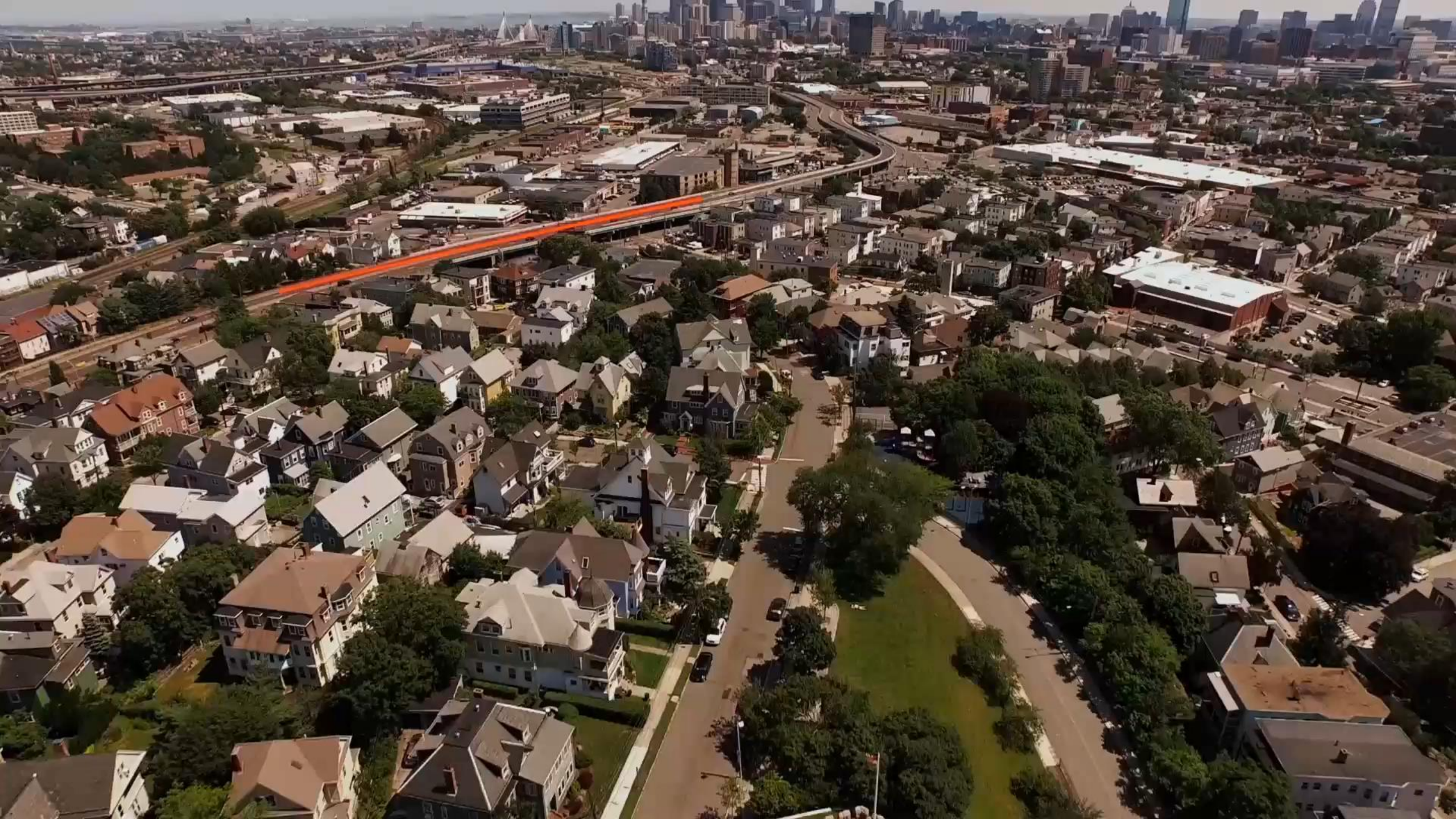
RDV\_stress\_test

Reality Data Web Viewer Stress Test



Marjolaine Cayer







# SIMULATION & MOBILITY

Subway entrance

Pedestrian path

Pedestrians & traffic

Pedestrian path

Stage

START

WEST-VIEW

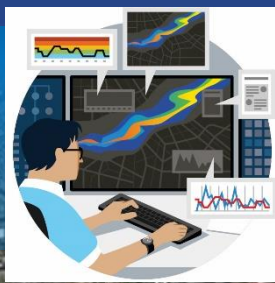
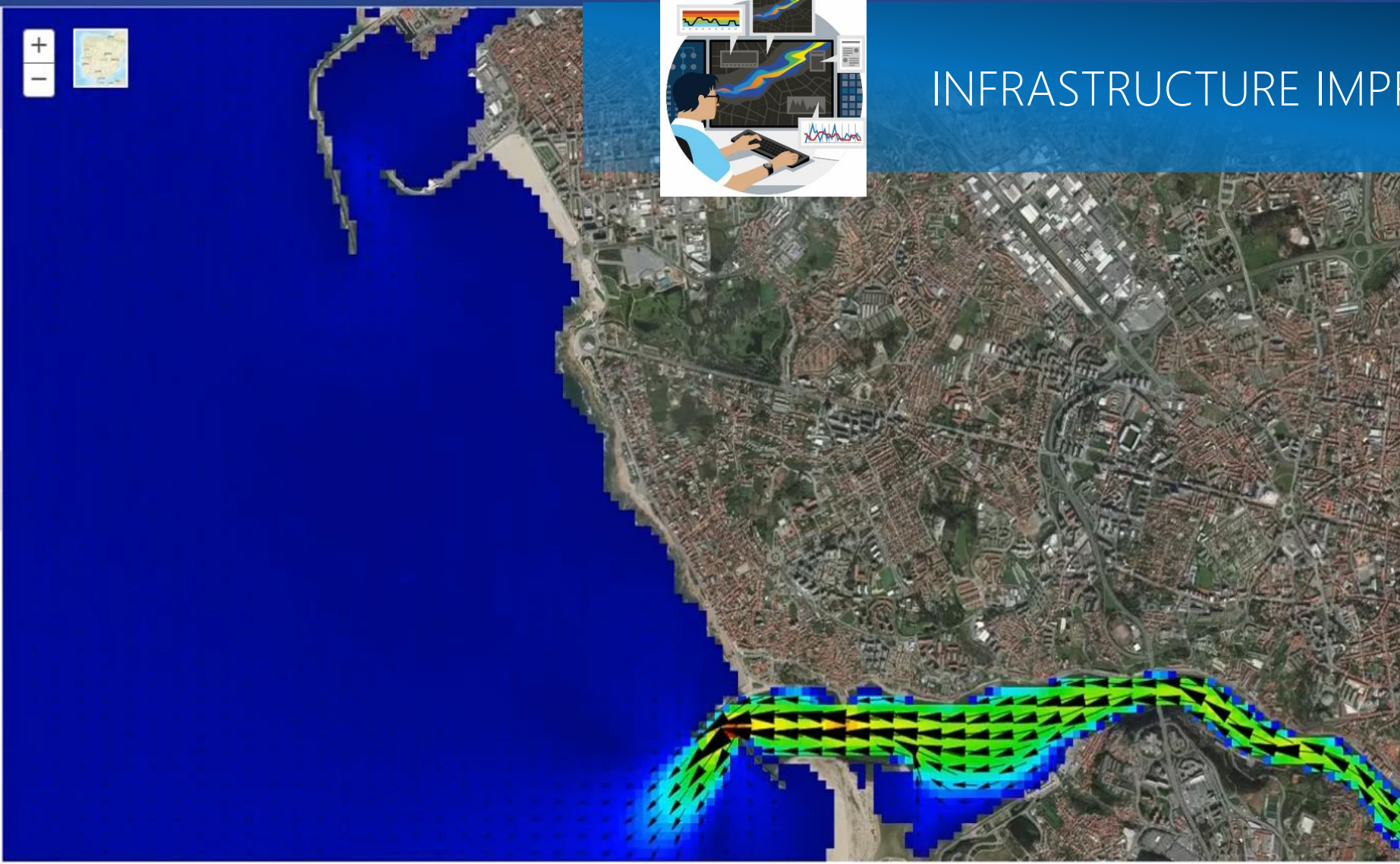
TOP-VIEW

INFO

A. CUMULATIVE MEAN DENSITY

CONTENT

- SALA DE COMANDO
- ABASTECIMENTO DE ÁGUA
- DRENAGEM URBANA
  - Águas residuais
  - Águas pluviais
  - Ribeiras e rios
  - Praias
  - Modelação
    - x<sup>2</sup> Redes
    - x<sup>2</sup> Simulações offline
    - Previsão de ocorrências
- OPERAÇÃO
- LOGÍSTICA



# INFRASTRUCTURE IMPROVEMENTS

- ☒ Correntes [modulo]
- ☒ Correntes [vectores]
- ☐ Douro Level Animated



06/Fev/2019 19h14

SALA DE COMANDO

ABASTECIMENTO DE ÁGUA

DRENAGEM URBANA

Águas residuais

Águas pluviais

Ribeiras e rios

Praias

Intervenções

Tarefas

Telemetria

Coliformes fecais

Indicadores

Qualidade

Informação ao público

Câmara

Modelação

LOGÍSTICA

OPERAÇÃO

CONSULTAS

COMERCIAL

22°

Qua 14°

Qui 14°

Sex 14°

Sab 12°

Dom 12°

14/Mai/2019 02h11

15/Mai/2019 02h11

15/Mai/2019 08h11

15/Mai/2019 14h11

15/Mai/2019 20h11

Legenda

An aerial photograph of a city, likely Stockholm, featuring a prominent church spire in the background. Overlaid on the left side of the image is a 3D architectural rendering of a modern building complex. The complex includes a tall, cylindrical tower with a grid-like facade, a rectangular building with a similar grid facade, and a lower building with a red facade and circular windows. The rendering is semi-transparent, allowing the city's buildings and greenery to be seen through it.

Bentley®  
OpenCities™ Planner  
*3D Visualization Software  
for Urban Planning*

Bentley®  
Advancing Infrastructure

# OpenCities Planner is ideal for smart cities

# Access



# Share



# Engage



# Urban development portal



HOLD LEFT BUTTON  
TO MOVE THE MAP



HOLD RIGHT MOUSE BUTTON  
TO ZOOM IN & OUT



HOLD BOTH MOUSE BUTTONS  
TO TILT & ROTATE THE MAP

Navigation på svenska



FLYG TILL...



SVENSKA



ENGLISH

# Promotion and advancements



# Visualization of city infrastructure



CLICK HERE TO START



CITIZEN  
SUGGESTIONS



PROJECT  
INFO



PROJECT  
CONTENT

# Consultation and dialogue



## Velkommen til Områderegulering for E39 Mandal-Lyngdal øst på offentlig ettersyn

For optimal funksjonalitet MÅ Google Chrome eller Firefox benyttes på grunn av store datamengder (link til nettleserne finner du på våre nettsider). Ved innlogging MÅ noe nedlastningstid beregnes i oppstarten. Nedlastningstid er avhengig av internetthastighet og datamaskin.

I henhold til plan- og bygningsloven § 12-10 legges forslag til områderegulering med konsekvensutredning for fremtidig E39 mellom Mandalskrysset og Herdal i Lyngdal ut til høring og offentlig ettersyn etter 1. gangs behandling i planutvalget i Mandal den 10.04.19, i teknisk utvalg den 08.04.19 og kommunestyret den 25.04.19 i Lindesnes, og i hovedutvalg for miljø, plan og drift i Lyngdal den 10.04.19.

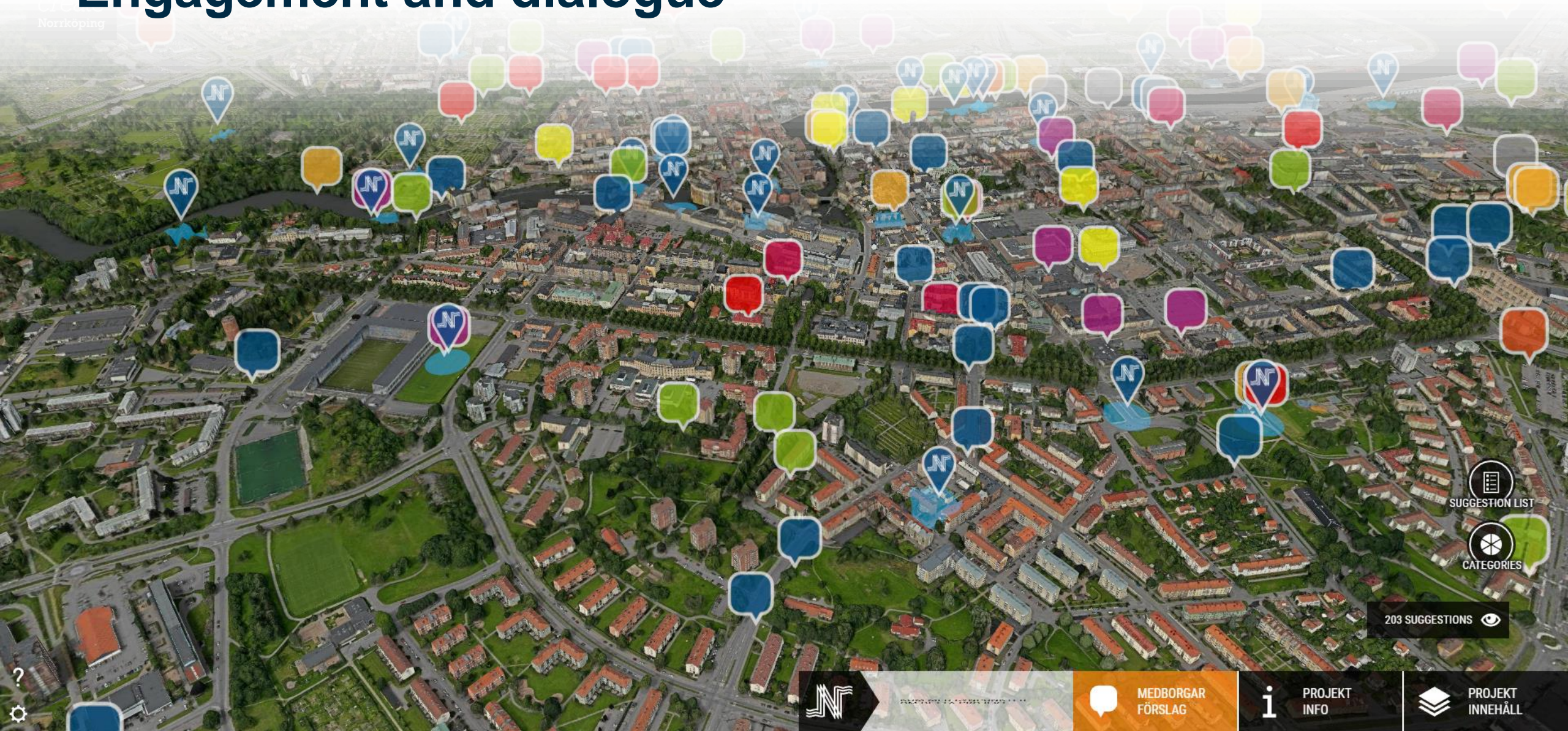
Høringsperioden er 03.05.2019-14.06.2019.

I høringsperioden kan DU komme med innspill på Nye Veiers planforslag. Merk at alle innspill må leveres skriftlig (per post eller e-mail) til prosjektets mailkonto ([E39ML@sweco.no](mailto:E39ML@sweco.no), Nye Veier, eller denne kartløsningen).

Denne digitale kartløsningen gir en god oversikt over planforslaget «Områderegulering for E39 Mandal – Lyngdal Øst» oversendt til førstegangsbehandling 6.mars 2019 av Nye Veier. Her vil du se en 3D-visualisering av Nye Veiers anbefalte korridor for ny E39 mellom Mandal og Lyngdal Øst. 3D-visualiseringen viser forslag til planlagt vei innenfor områdereguleringens plangrense. Merk at veilinen som ligger inne vil kunne optimaliseres og justeres innenfor plangrensen. Først i etterfølgende planfase vil tiltaket detaljeres ut.

I kartløsningen kan du skru av, og på, ulike kartlag. Dette gjør at du har mulighet til å se

# Engagement and dialogue



# Visualization of 3D geoportal




3D-PROJEKT



VERKTYG






*i* « BIENVENUE À MARSEILLE » X



This demo shows integration of a reality model with a digital terrain model, ortho imagery, and vector data from a spatial database.

*Here's what you can do:*

- Click a building to see the associated database attributes
- Toggle different layers to overlay geo-data
- Use the search feature to look up locations from a connected spatial database

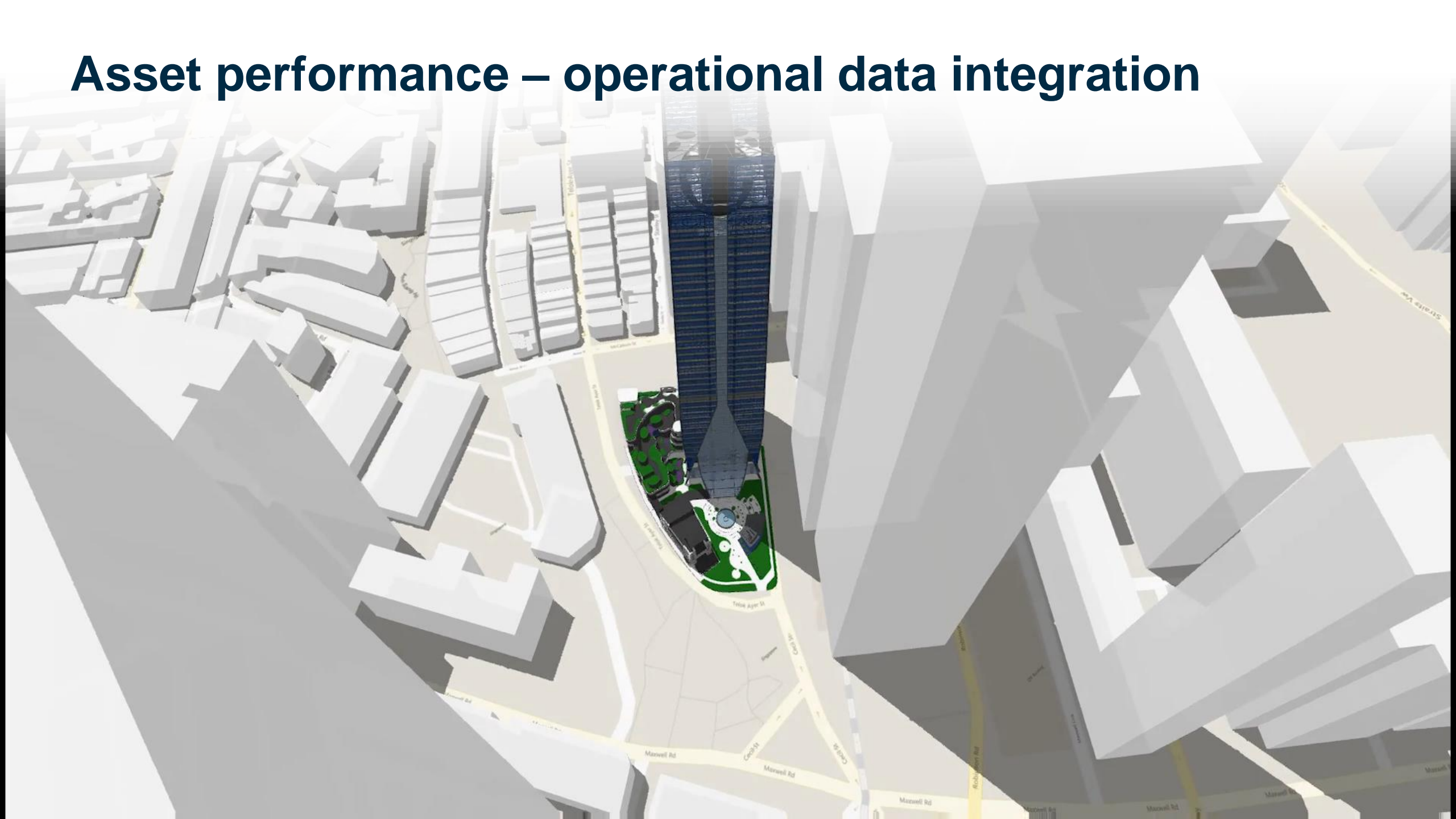


# Database driven application



INFO

# Asset performance – operational data integration



# Supports massive datasets

- Streaming technology
- Visualize entire cities and countries
- Visualize terrain models, reality meshes, semantic models such as CityGML



# Files

- 3D-models, such as a 3D city set
- DSM/DTM
- Ortho Images
- Reality Models
- Vector

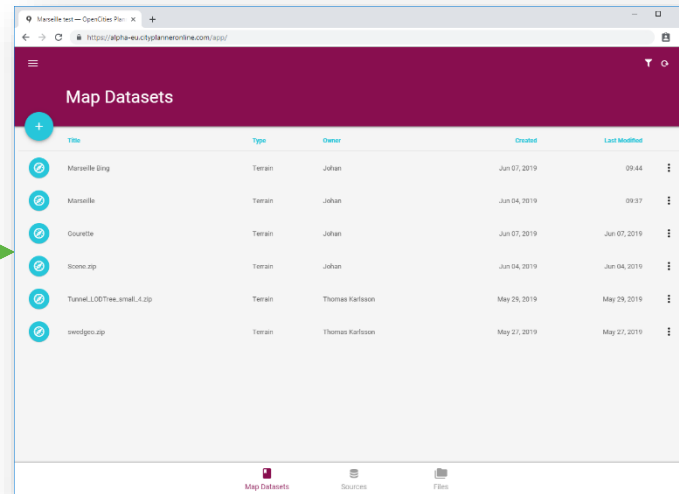
# Services

- WCS
- WMS

# Databases

- Spatial databases such as Oracle Spatial, PostGreSQL
- Geometry and attributes
- 3DCityDB (CityGML) or custom database layout

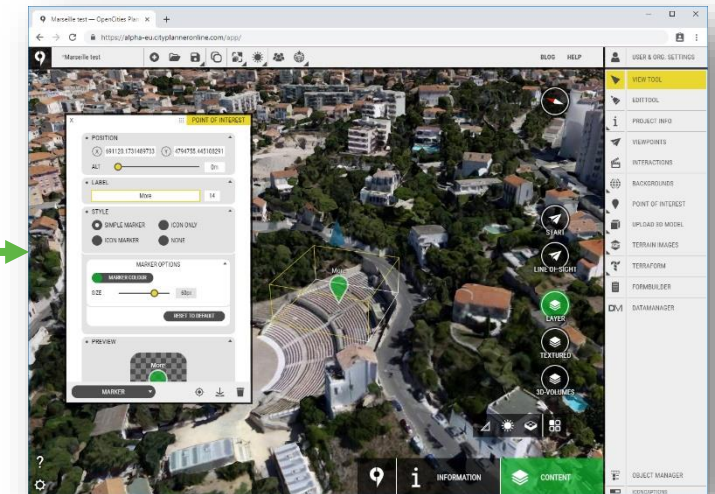
## DataManager



Title	Type	Owner	Created	Last Modified
Manville Bing	Terrain	Johann	Jun 07, 2019	09:44
Manville	Terrain	Johann	Jun 04, 2019	09:37
Counties	Terrain	Johann	Jun 07, 2019	Jun 07, 2019
Some.zip	Terrain	Johann	Jun 04, 2019	Jun 04, 2019
Tunnel_100Thes_small_4.zip	Terrain	Thomas Karlsson	May 29, 2019	May 29, 2019
swedgroup.zip	Terrain	Thomas Karlsson	May 27, 2019	May 27, 2019

OCP  
streaming  
format

## Project Editor



## Project content

- WMS, Geo Images, Shape
- 3D CAD models
- Points of interest
- Questionnaire form
- Editor Tools: Sketching, Shadows, Videos



OpenCities™ Planner

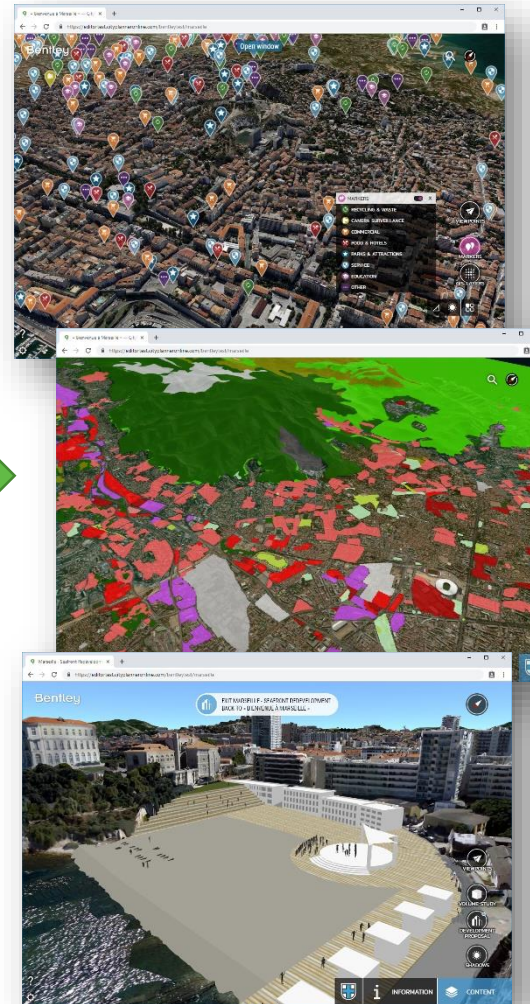
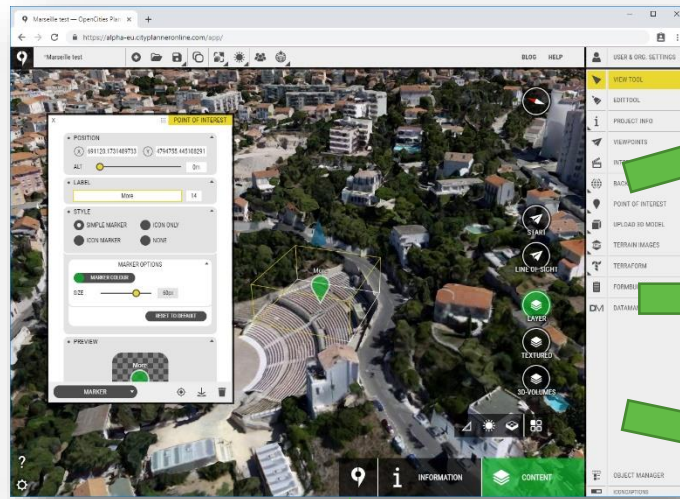
# Live visualization from spatial database

Semantic 3D city models, zoning, assets, points of interests, vector geometry





## Project Editor



## Team, Stakeholders, Citizens



## Project content

- WMS, Geo Images, Shape
- 3D CAD models
- Points of interest
- Questionnaire form
- Editor Tools: Sketching, Shadows, Videos



Model is georeferenced. Click locate icon to navigate to the model.

**3D OBJECT**

**POSITION**

X: 155157.29 Y: 6571707.5

ALT: 26.5299

☒ ABSOLUTE ☐ RELATIVE

**DIMENSIONS**

WIDTH: 1

DEPTH: 1

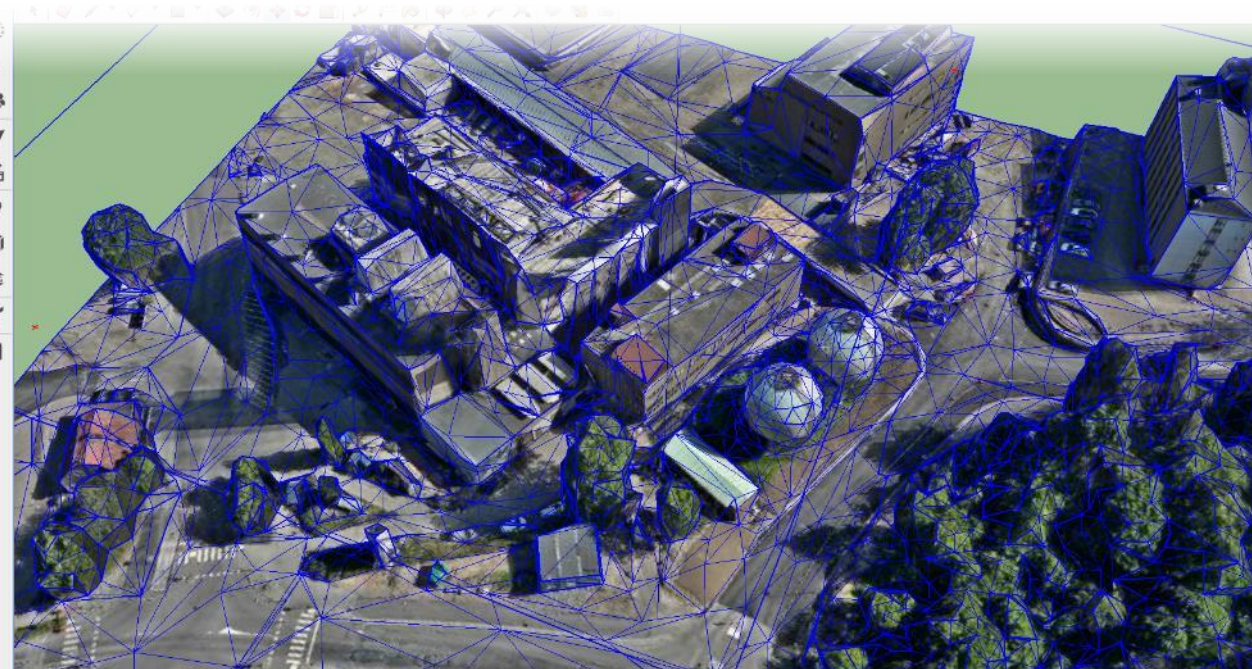
HEIGHT: 1 0

GEOSPATIAL



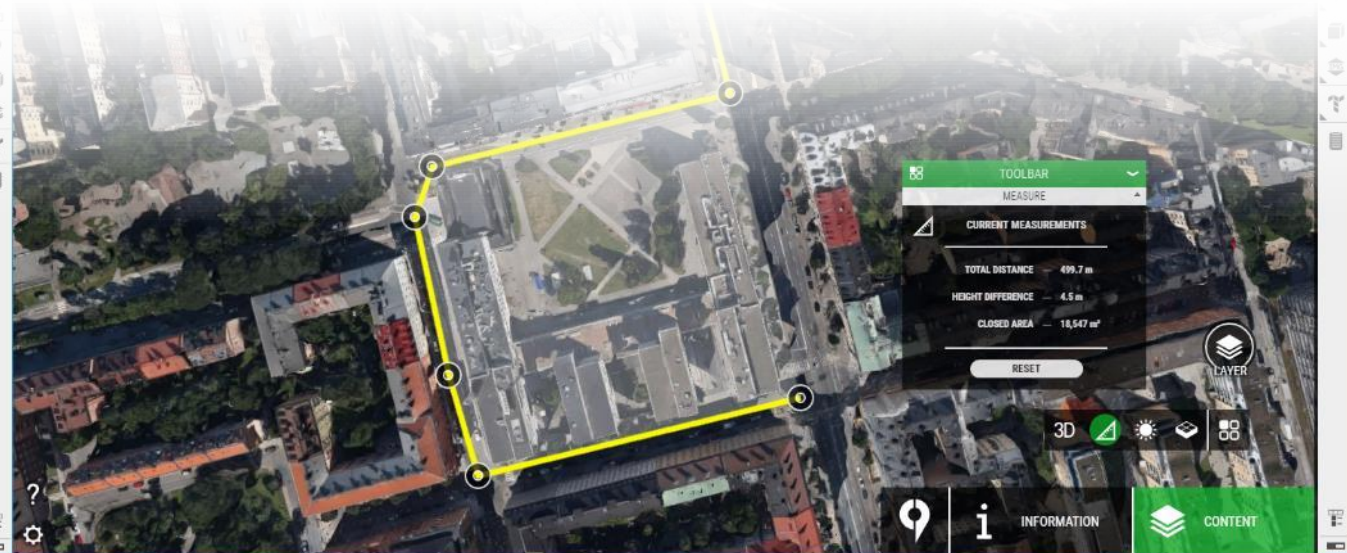
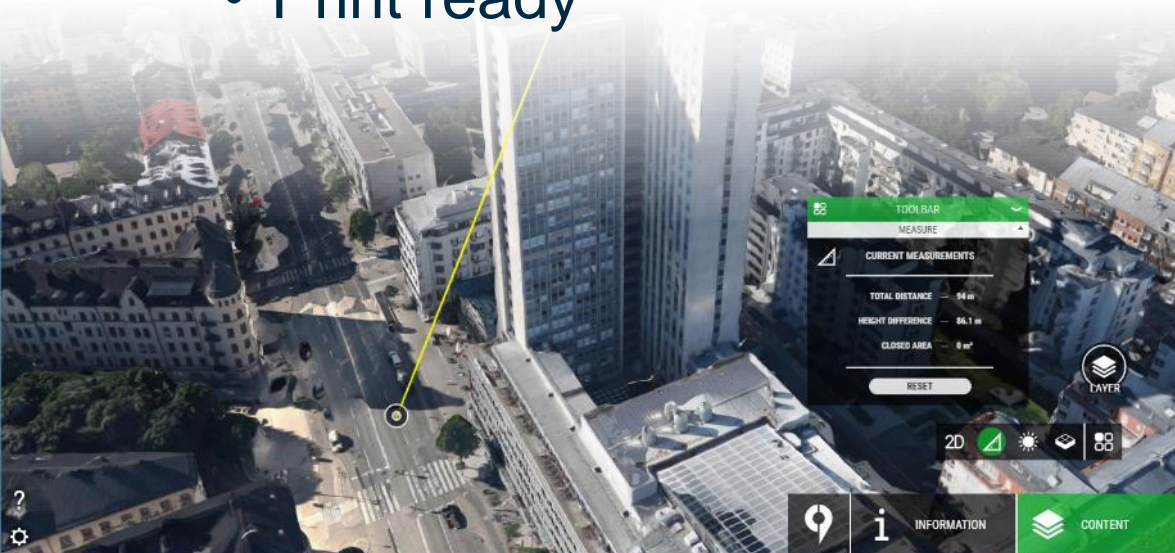
# Export 3D

- KMZ/Collada exports from the entire 3D city model
- Separate files or combine to one
- Quality setting



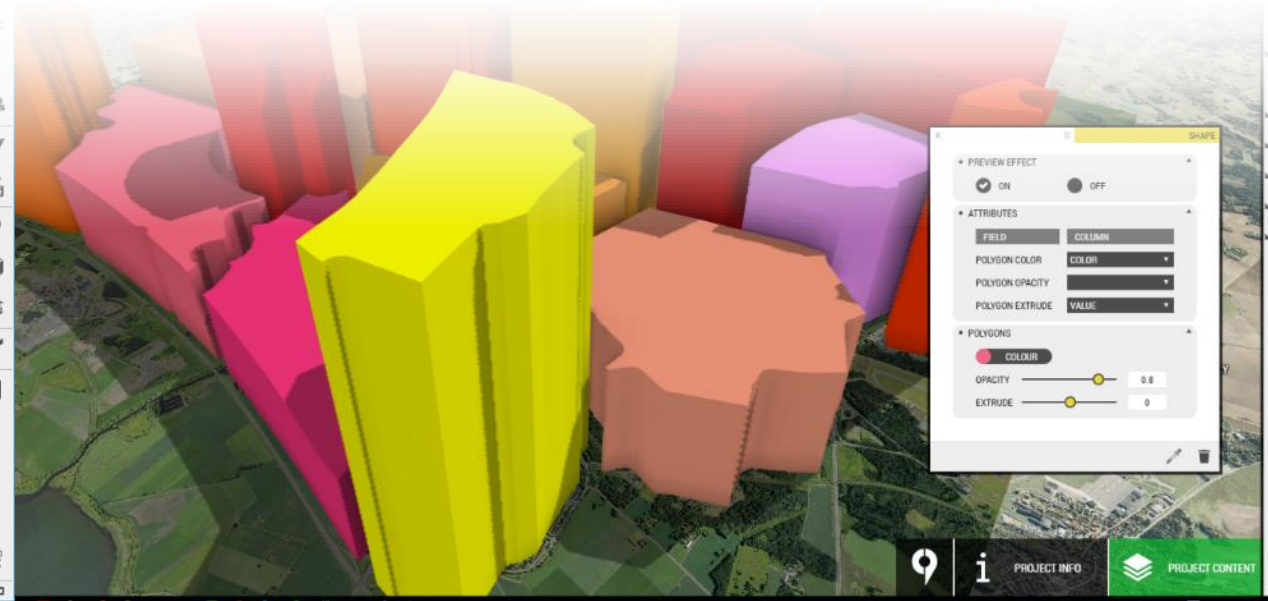
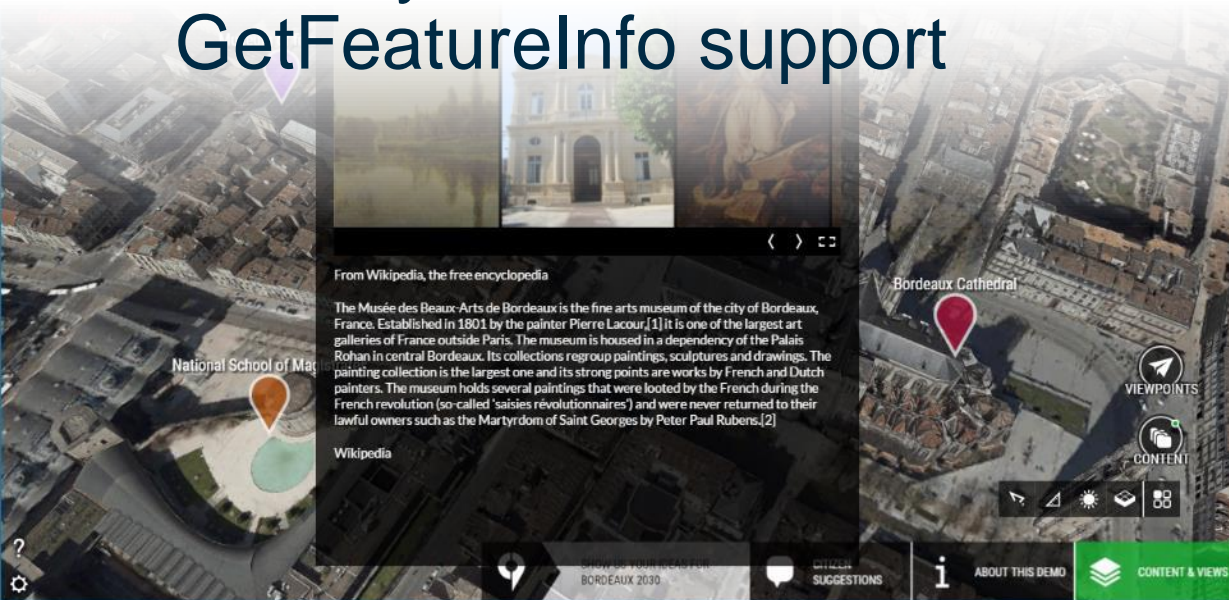
# More editor tools

- Measure
  - Distance, height, area
  - Also, shows cursor current coordinate and altitude
- Export high-res screenshot
  - Print ready
- Export 360 panorama image tours
- Export videos from camera paths
  - Even 360 videos!



# Adding point of interests, vector, and WMS

- Add point of interests with support for images, text, embedded content, attachments
- Overlay WMS with GetFeatureInfo support
- Shape files, texture on ground or extrude to 3D. Show attributes on click.



# Creating a dialogue or user interaction

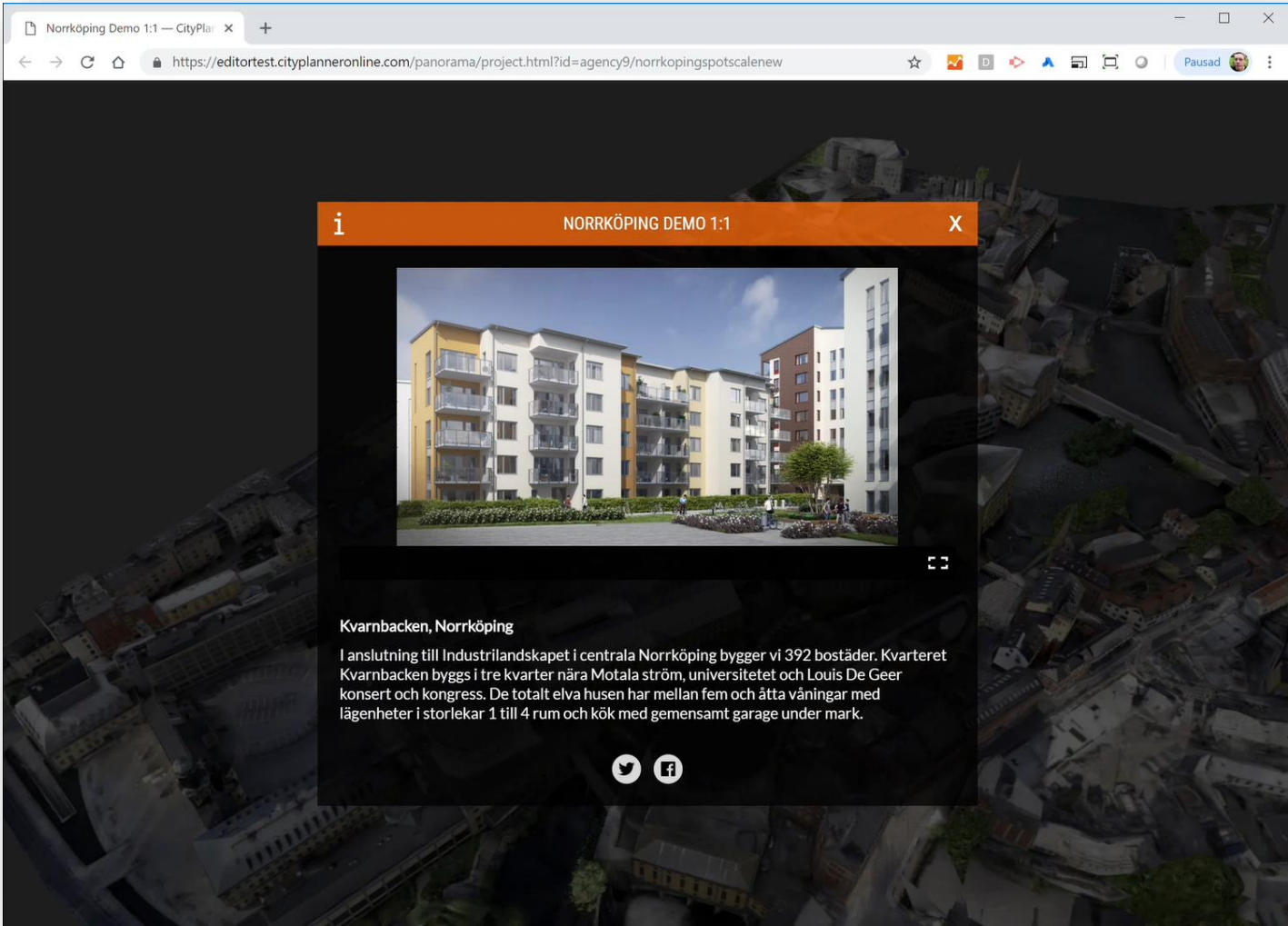
The screenshot displays the CityPlanner FORM BUILDER interface. The top header includes the 'CityPlanner' logo, 'UNSAVED CHANGES' with save, undo, and redo icons, and a yellow 'FORM BUILDER' tab with an 'EXIT' button. The main workspace is divided into three sections: a map on the left, a central form editor, and a right-hand settings and components panel.

**Map:** Shows a street map with labels for 'KARATUNK', 'NAMING', 'ST ALLEGATION', and 'STODOLSKY'. A green area is highlighted on the map.

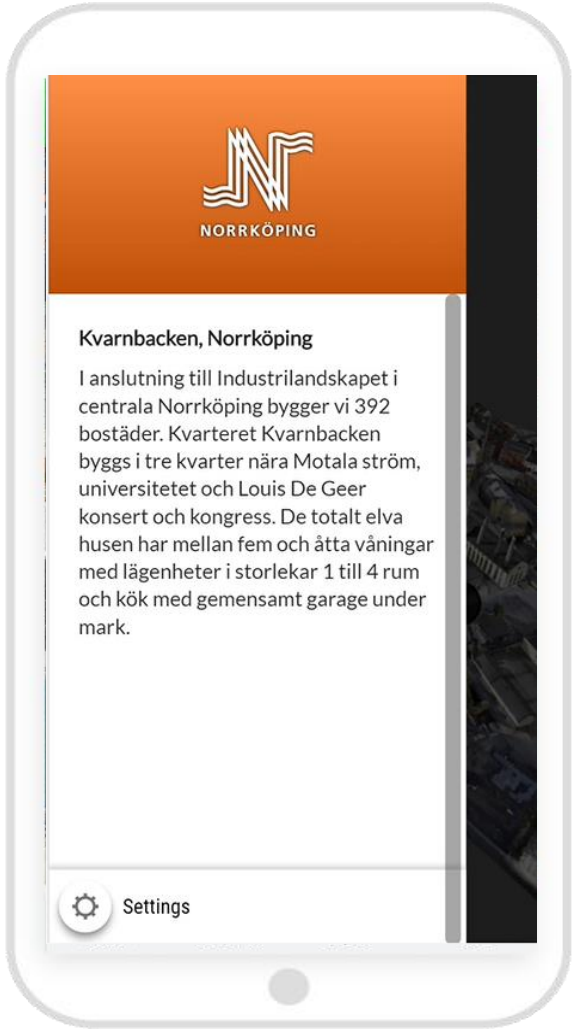
**Form Editor:** Features a green header 'WHAT DO YOU THINK?'. Below it is a 'DRAW YOUR IDEA' section with a dashed box and an information icon (i) stating 'Show us your ideas for developing the city.' Below this are three buttons: 'EMPTY SECTION' with a dropdown arrow, 'ADD A PAGE' with a plus icon, and 'AFTER SUBMIT' with a dropdown arrow.

**Settings and Components Panel:** A yellow header contains a wrench icon and the word 'SETTINGS'. Below it are two checkboxes: 'PUBLISHED' (checked) and 'LEGAL SUGGESTION OPTIONS' (unchecked). A yellow header with a plus icon and the word 'COMPONENTS' follows. Below this are several buttons: 'CATEGORIES', 'CREATE TOOLBOX', 'USER INFORMATION', 'INFORMATION', 'TEXT FIELD', 'QUESTION', 'SATISFACTION', and 'ATTACHMENTS'.

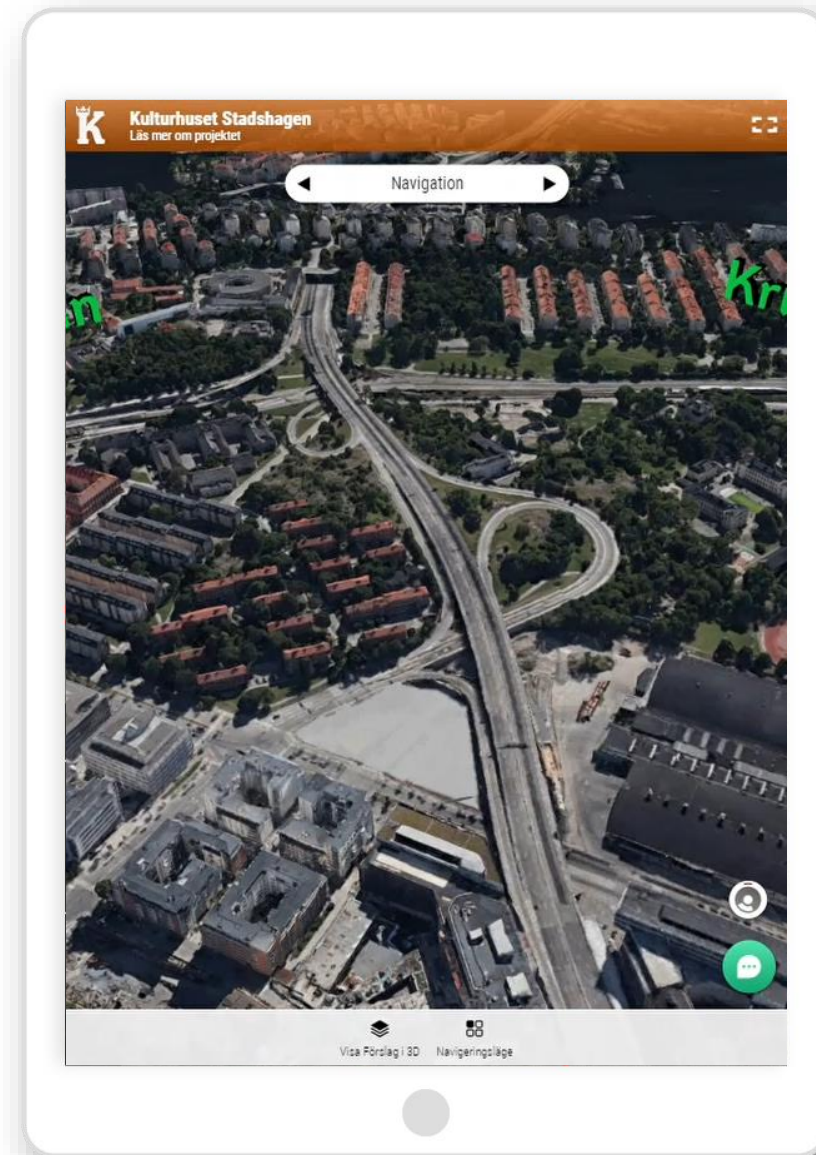
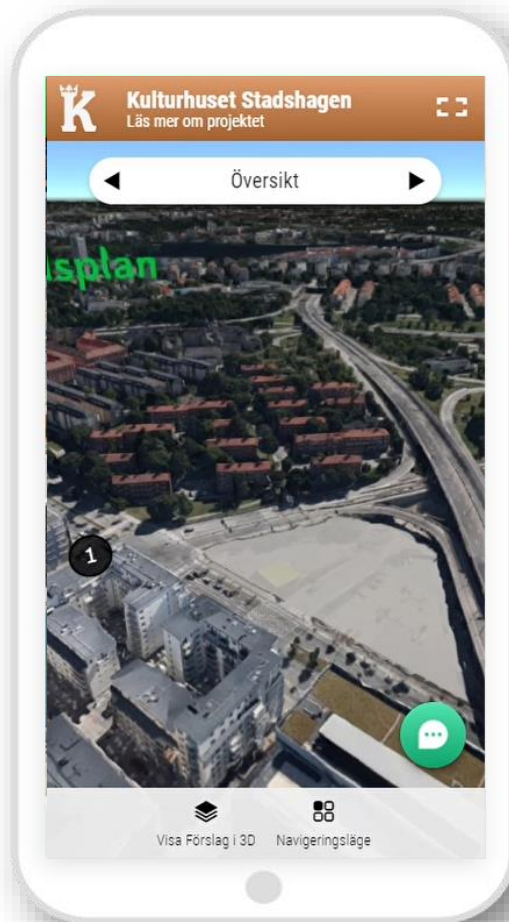
# Desktop



# Mobile



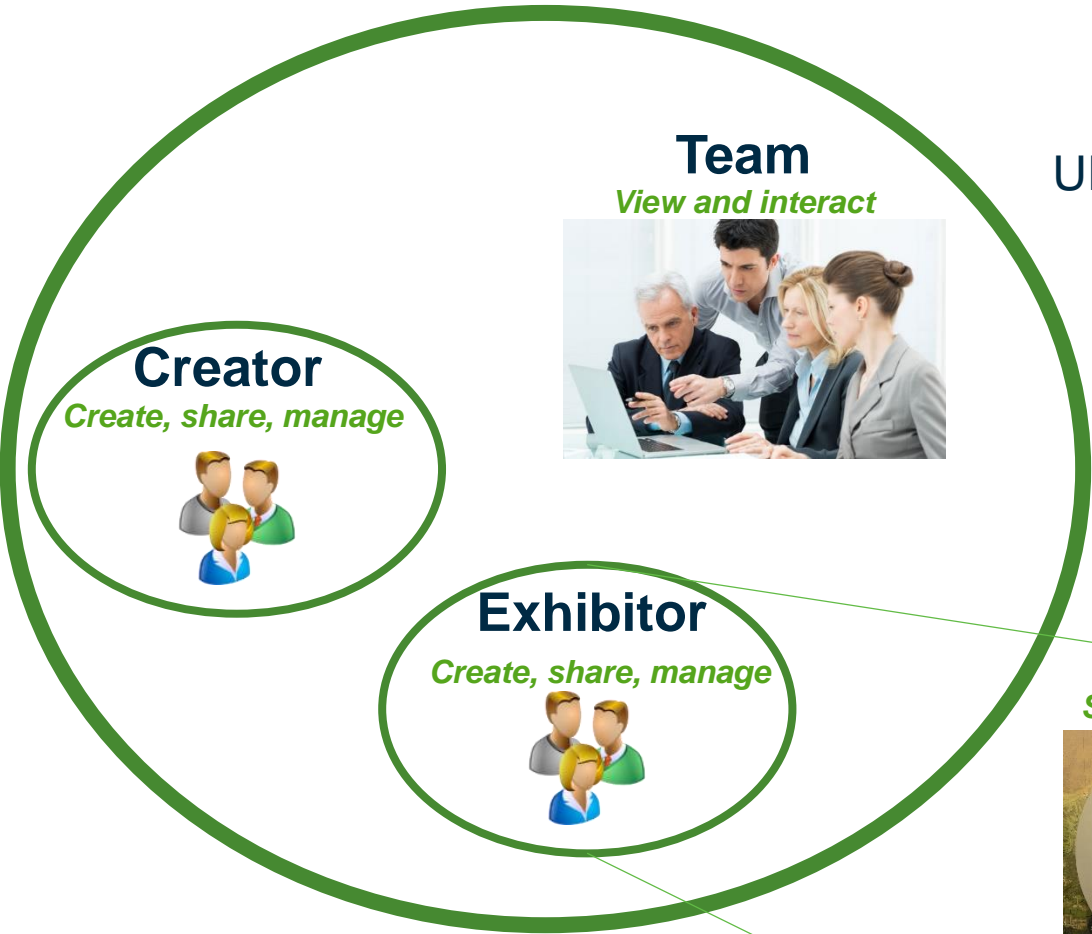
# Panorama and interactive 3D



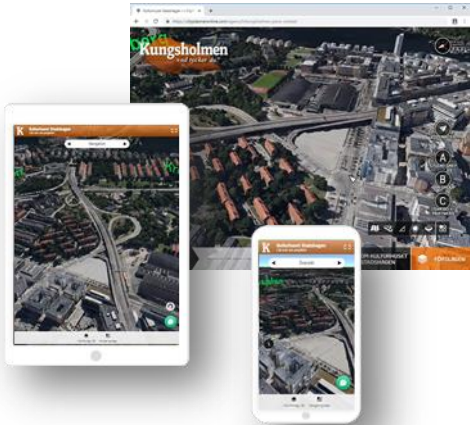
# Showroom and project office display



# Named Users



URL



View and interact (No cost)

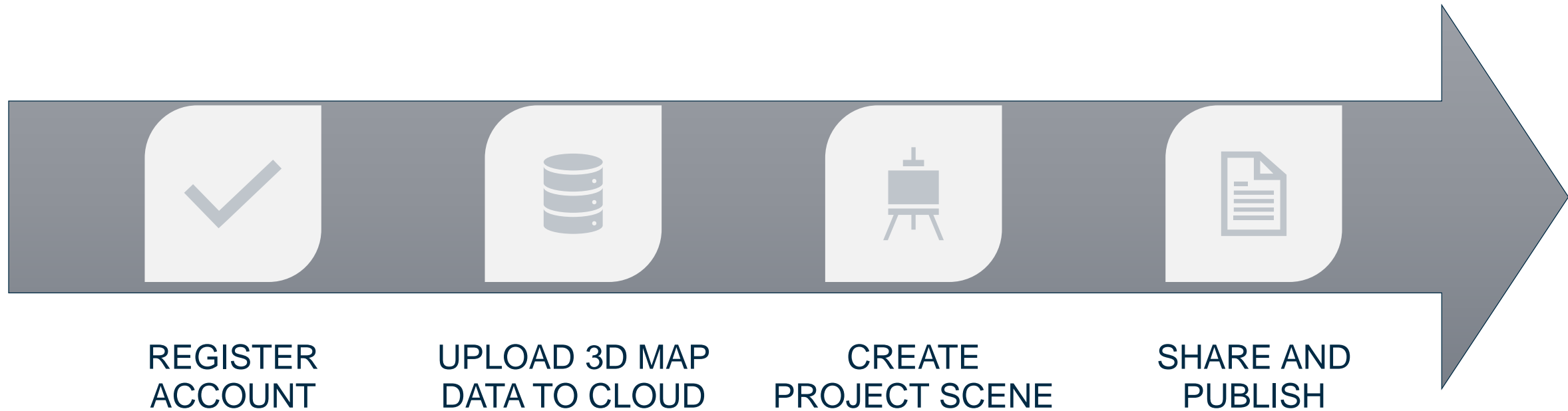
Showroom application



Teams, Stakeholders, Citizens



# Easy deployment in the cloud



# Summary

## More efficient projects

- Easily share project information
- Short review and feed-back lead time
- Improved decision material
- Tools for use throughout organization

## Decreased costs

- Same solution for web, mobile and exhibition screens
- Reuse of city model and mapping data in several projects
- Easy to access information at home, office or in meetings

## Engagement

- Powerful communication of project externally
- Less complaints and formal appeal
- Shorter planning process
- Dialogue with wider groups of citizens

**Planning tools, Project communication, Transparency and dialogue, Promotion**