



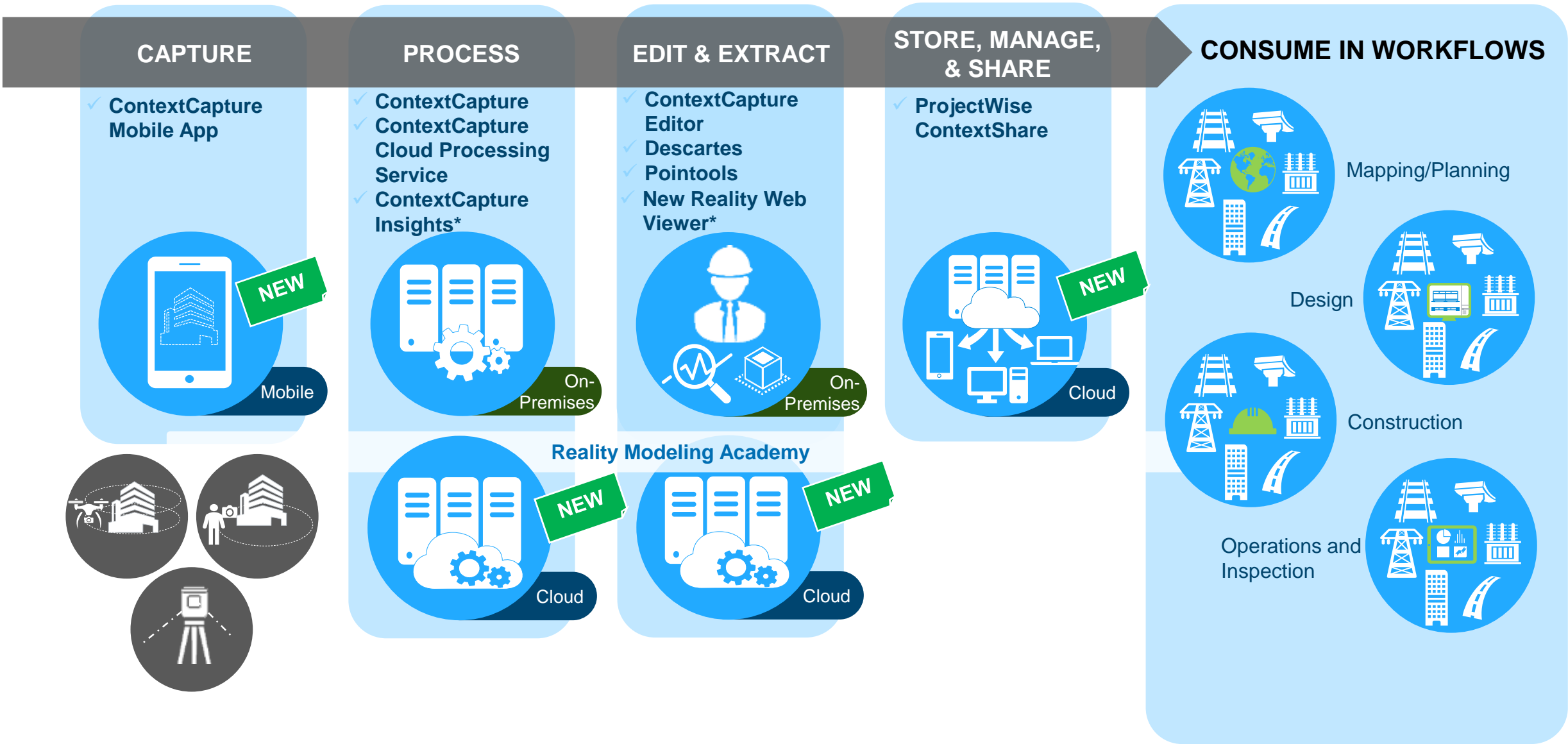
# Reality Modeling - ContextCapture

What's new!



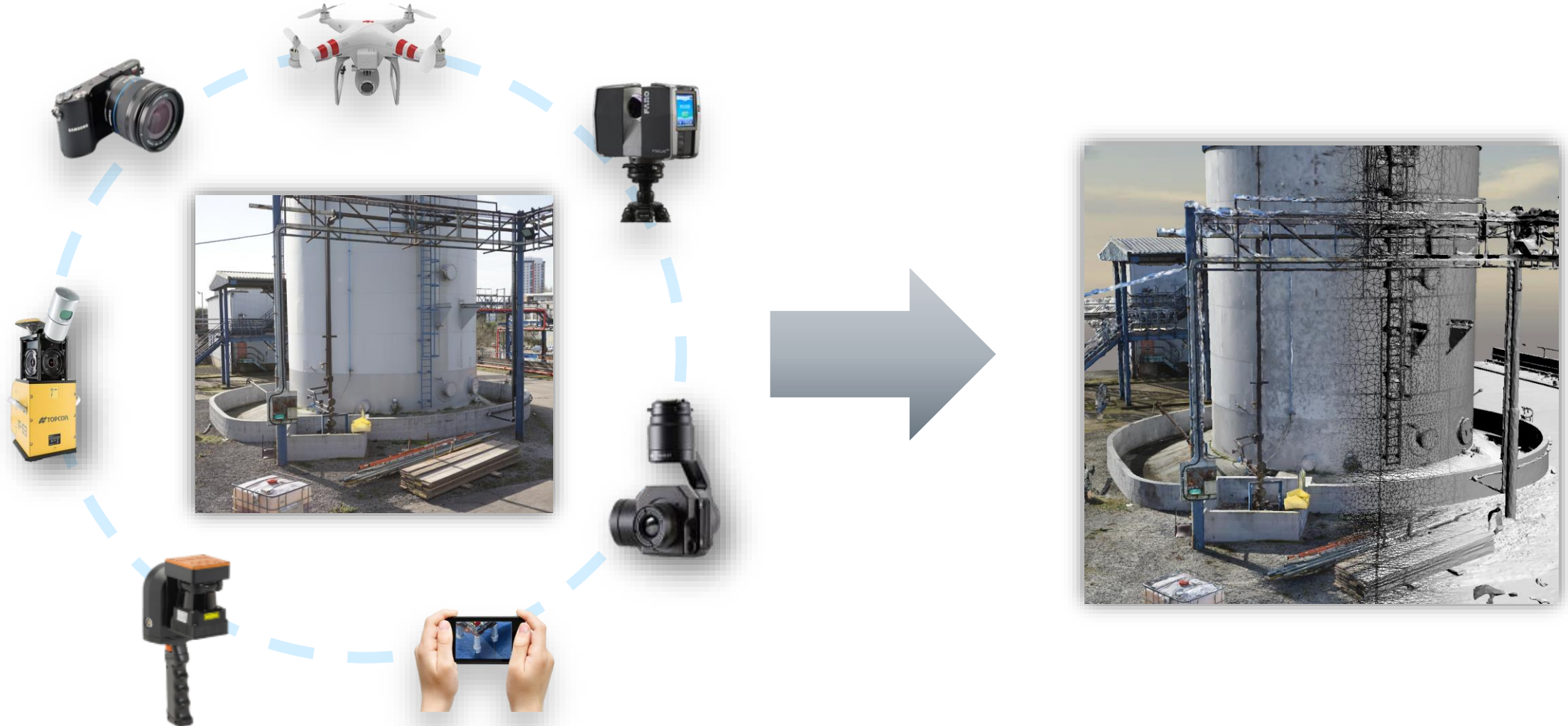


# Reality Modeling Portfolio



# ContextCapture Overview

ContextCapture can use a wide array of acquisition devices





Unlimited Scalability





# Latest features

Reality Modeling





*Photos and Point Clouds*

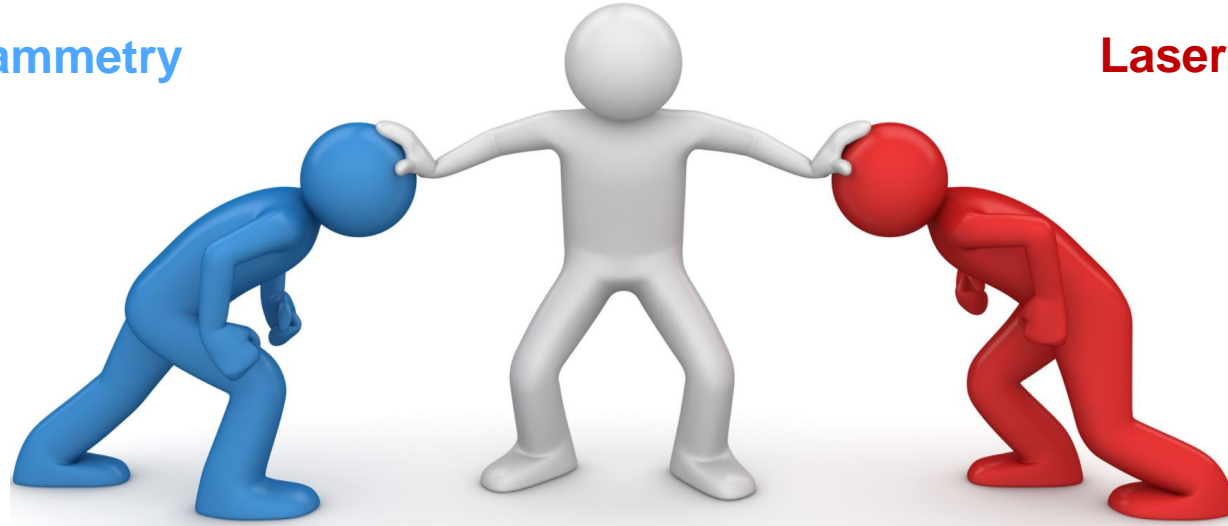
# Hybrid Input



# Hybrid Modelling with ContextCapture

Photogrammetry

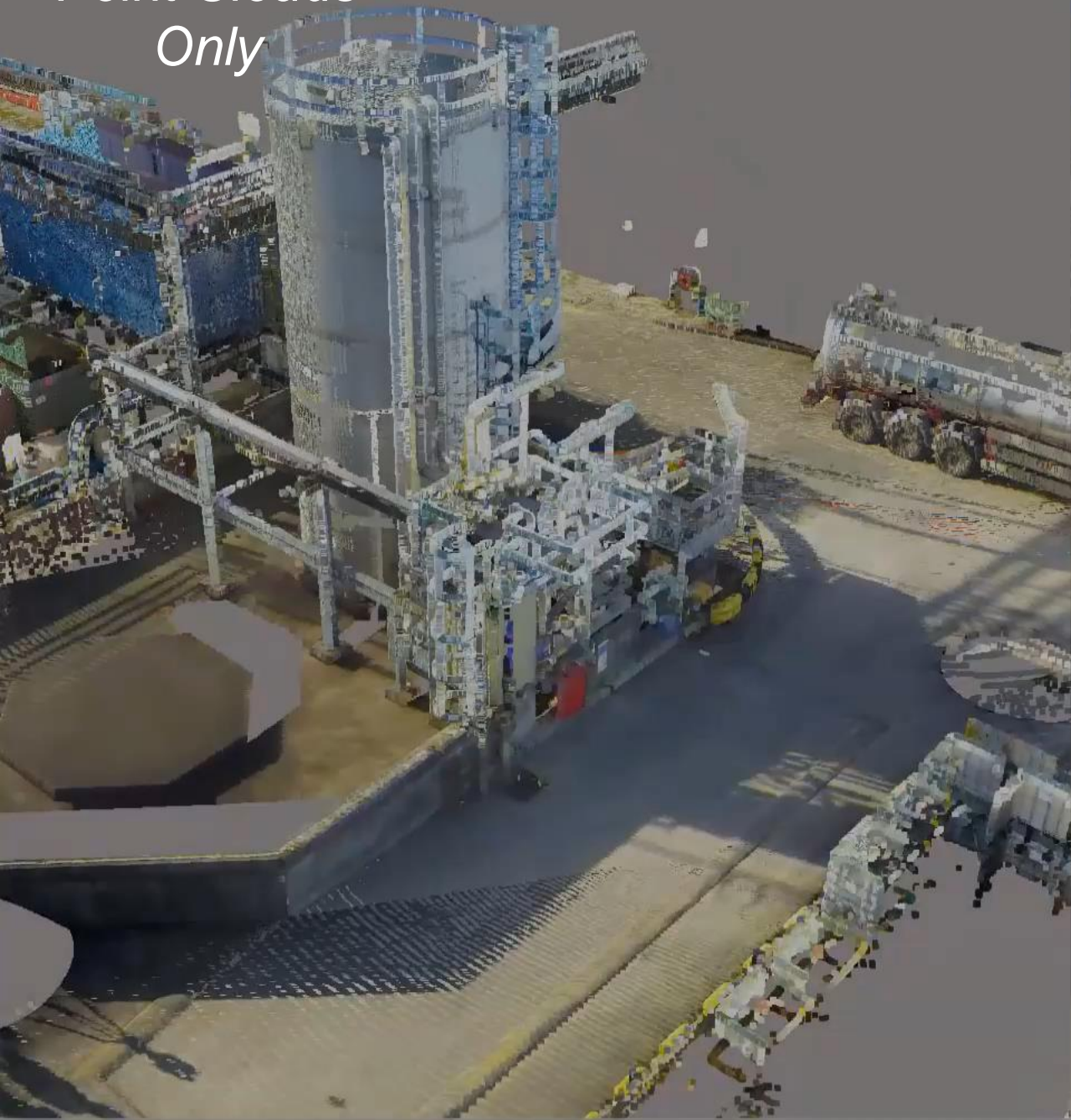
Laser scanning



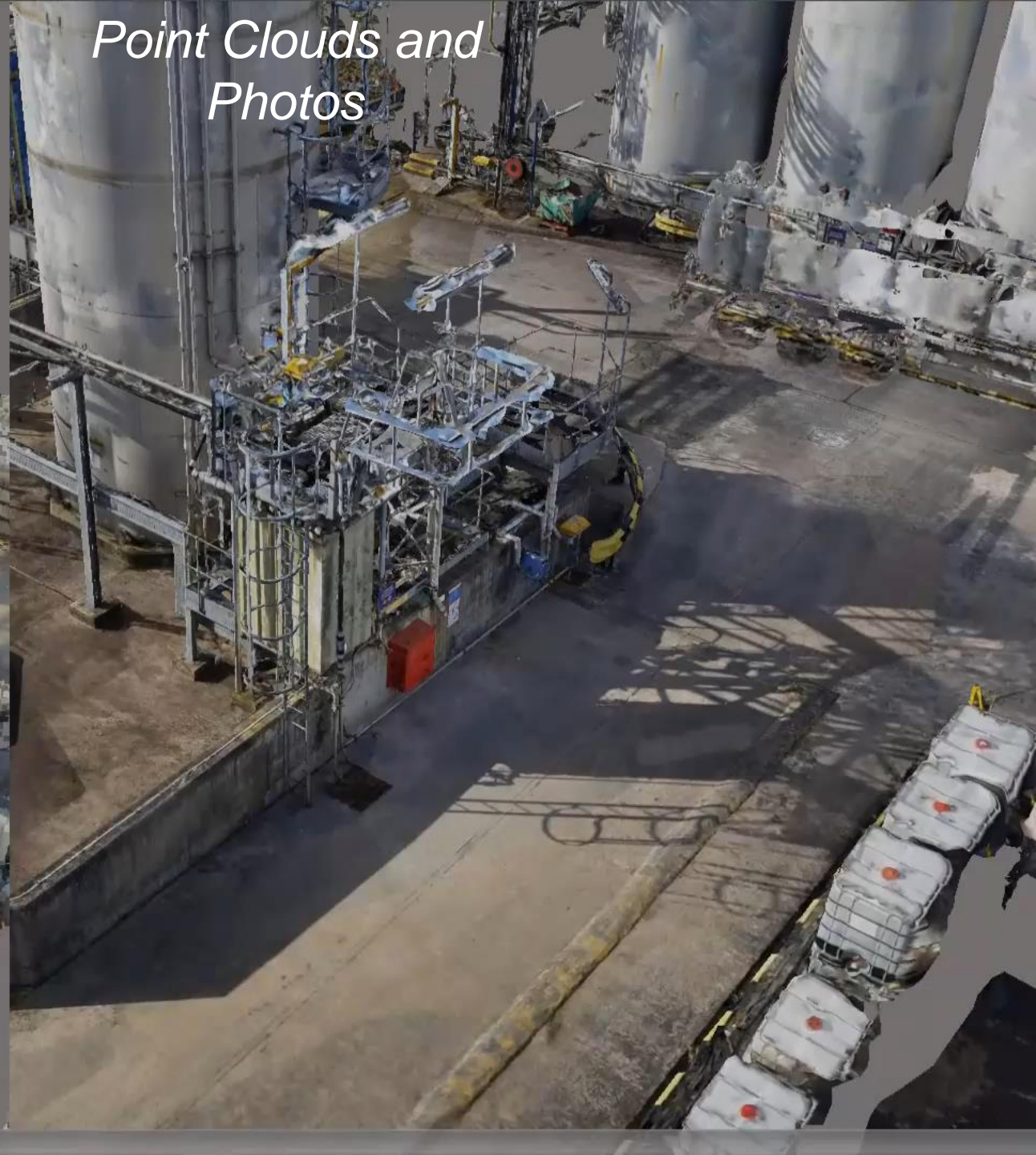
- Images Only
- Point Clouds Only
- Point Clouds and Imagery Combined
- Point Cloud geometry with an Image texture map!



*Point Clouds  
Only*



*Point Clouds and  
Photos*





*Use directly inside many  
Bentley applications*

# 3SM File Format







3D mesh without level of details

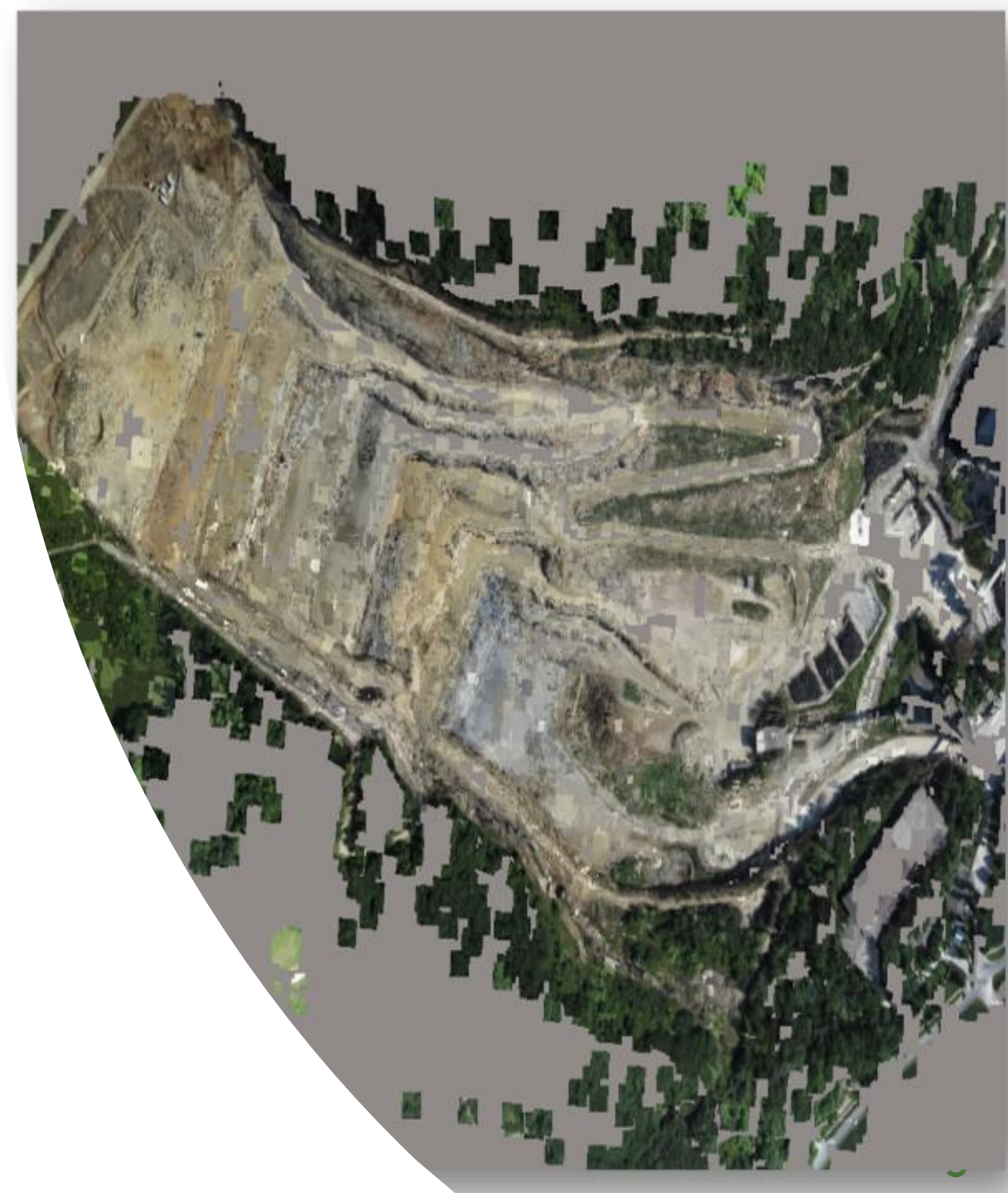


Bentley ScalableMesh 3SM



*AT Quality Control and a draft 3D scene*

# Splats & Photo Navigation



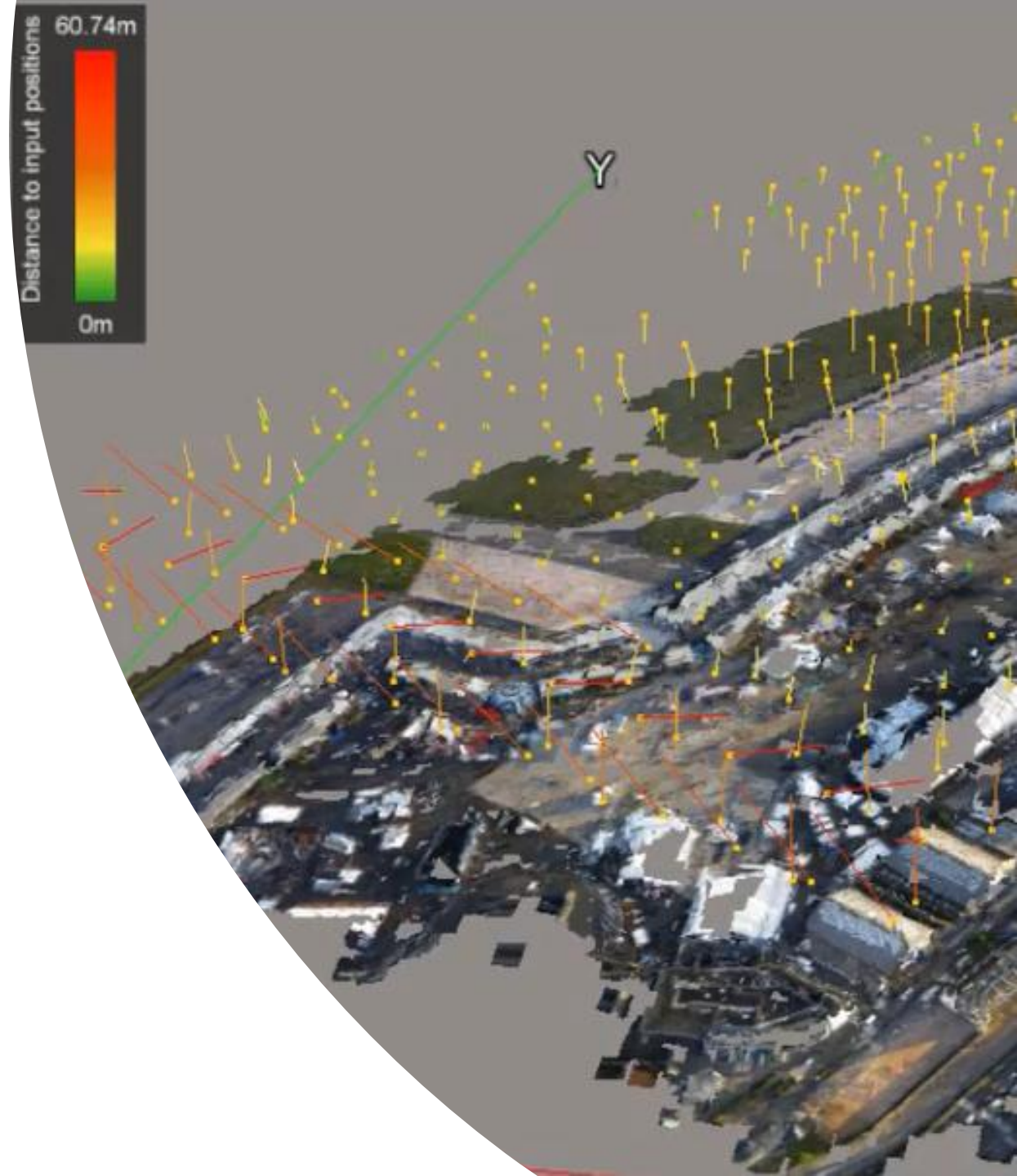






*Improved AT and Quality Metrics to  
help with your more difficult  
projects*

# Aerotriangulation and quality metrics





Improve the accuracy of your 3D reality meshes



*Faster reconstruction with more  
engines available*

# Parallel Processing





Capabilities	ContextCapture	ContextCapture Centre	ContextCapture Cloud
Imagery dataset size per project	Up to 300 Gigapixels	Unlimited	Unlimited
Scanned point clouds limitation per project	500 Million	Unlimited	Unlimited
Processing engines	1-2*	Unlimited	2-10

A single engine on a **high end desktop** will reconstruct between **30-50 Gpix per 24h** and around **10-15 Gpix on the cloud**.

**1 Gpix = 83 iPhone** pictures or **27 DSLR** pictures

**10 Gpix = 830 iPhone** pictures or **270 DSLR** pictures

**20 Gpix = 1660 iPhone** pictures or **540 DSLR** pictures

**30 Gpix = 2490 iPhone** pictures or **810 DSLR** pictures

\*To utilise 2 processing engines 2 separate copies of ContextCapture Desktop will be needed.



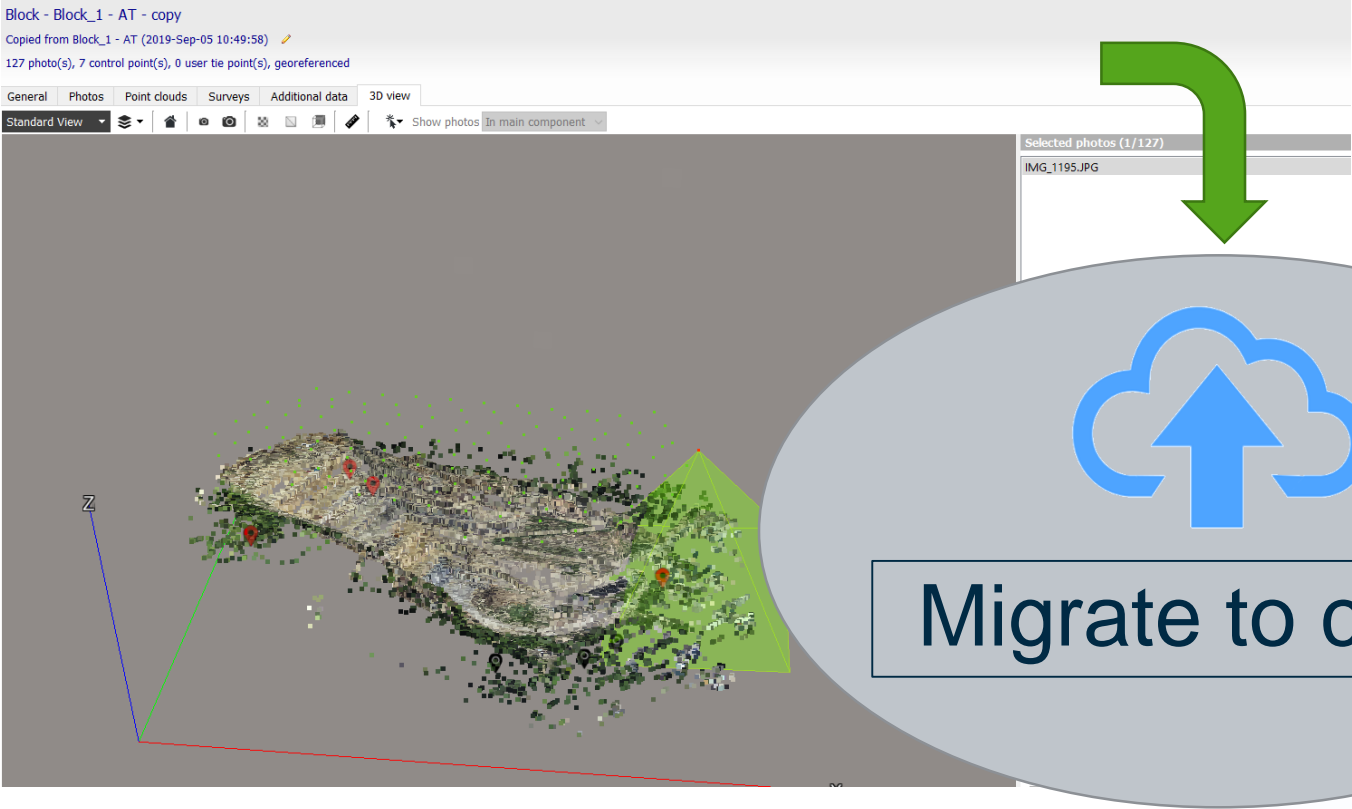
*Faster reconstruction through  
migration to cloud processing!*

# Migrate to Cloud





# Migrate to Cloud



*Save time when processing your data with automatic Geo registration.*

# April Tags





CenterCapture Master - Center edition [Live\_Demo.com]

Project Block Reconstruction Production Tools Help

contextcapture Center edition

Arnaud Durante

Environment Explorer

Camera Workflows

Workflow Center

Account/Workflow Settings

Reconstruction

The workflow is complete.

Live Demo

New Targets

New Targets - AT

New Targets - AT - AT

NEW-AT

NEW-AT - AT - UPDATE12

NEW-AT - AT - UPDATE13

PWCS\_Enabled

PWCS\_Enabled - AT

Reconstruction\_1

Production\_Live\_Demo\_Update13

Quality\_Metrics\_GCPs

Quality\_Metrics\_GCPs - copy

Quality\_Metrics\_GPS\_offset

Quality\_Metrics\_GPS\_offset - AT

Quality\_Metrics\_GPS\_offset - AT - copy

Scan\_Finder - UPDATE13

Block - PWCS\_Enabled - AT

Result of aerotriangulation of PWCS\_Enabled (2019-04-08 11:36:15)

19 photo(s), 0 control point(s), 0 user tie point(s)

General

Photos

Point clouds

Surveys

Additional data

3D view

Complete data

The block is ready for reconstruction.

Photos positioning level: **relative**

Aerotriangulation: [View settings](#) | [View acquisition report](#) | [View quality report](#)

This block has been edited after aerotriangulation.

[Publish images and orientations to ProjectView ContextShare](#)

19 photo(s) in 1 photogroup(s), 114.5 megapixels

19 photo(s) in the main component

19 known position(s) and 19 known rotation(s)

0 control point(s) (0 full point(s), 0 horizontal point(s), 0 vertical point(s)) among which 0 check point(s)

0 user tie point(s)

2356 automatic tie point(s) [View](#)

Resolution ranges from 0.0082 units to 0.01 units

Block has blockwise color equalization

Splats: available [Recreate](#)

Block ID: Block\_7

Created: 7/8/2019 11:36 AM

Last modified: 7/8/2019 1:49 PM

Reconstruction\_1

No tiling

medium precision

New reconstruction

Create a new reconstruction framework.

Open reconstruction

Remove reconstruction from block.

3:31 PM

7/9/2019

# Other new notable features..

- **Scan import now supports scans with unknown source position** and POD format.
- Support of unicode path for input photos.
- **Updated coordinate system database - HS2 SnakeGrid & OSTN15**
- Survey points report: horizontal errors now detailed for X and Y.
- Color equalization: improved performance
- **Surface constraint import: support of DGN polygons**
- Reconstruction: image sharpness considered for texturing.
- **Share Reality Data to ContextShare**
- Improvements on the overall software robustness/stability.





# Coming very soon!!

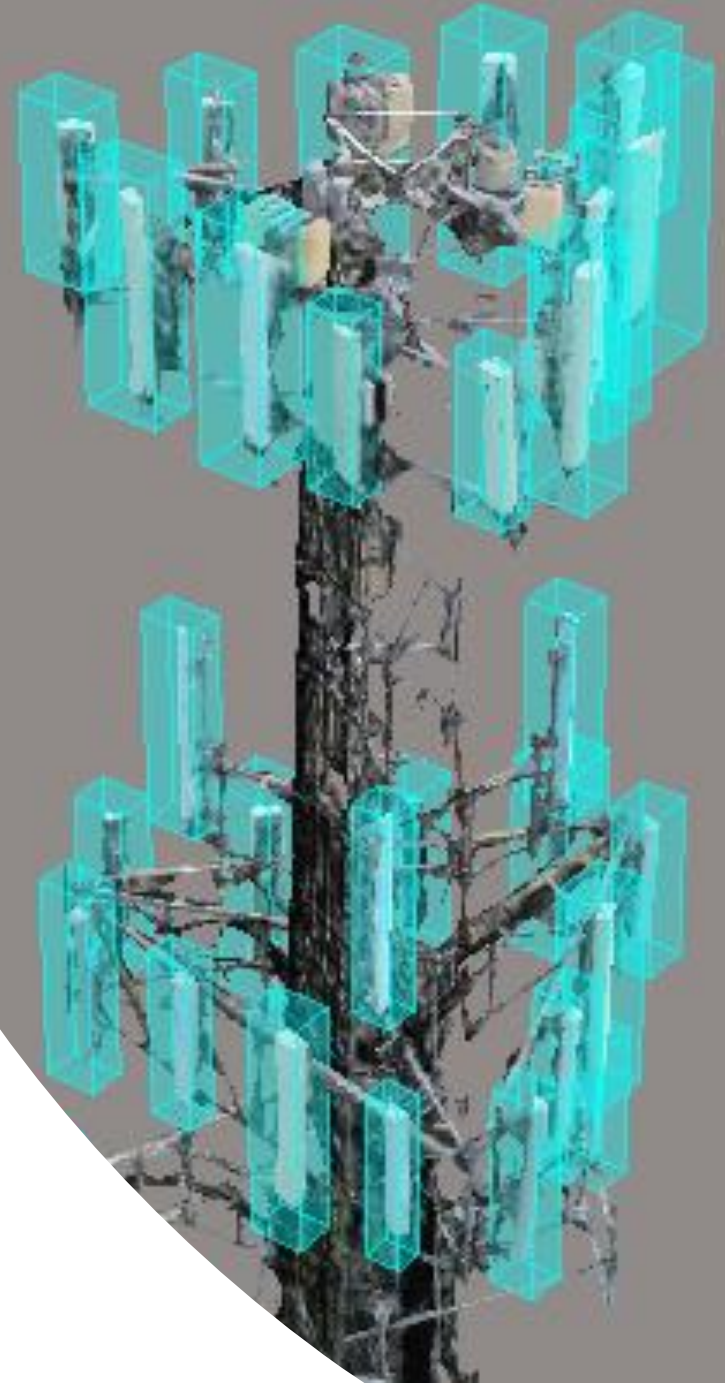
Reality Modeling





*Streamline the **detection and 3D location**  
of **objects from 3D Reality Data** using  
unique **3D Machine Learning***

# ContextCapture Insights!

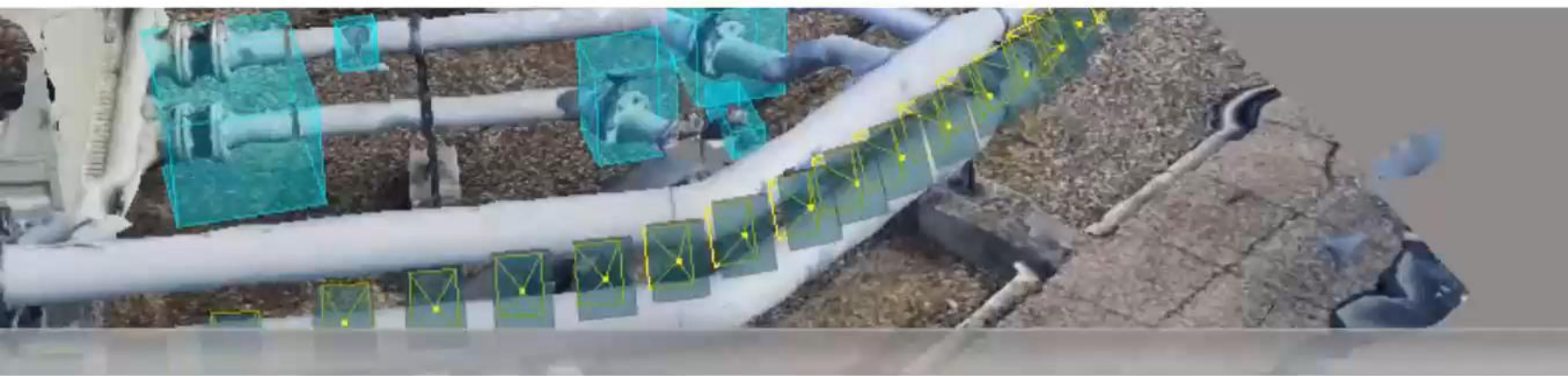






# ContextCapture Insights

Automatically detect and locate objects using 3D machine-learning technology

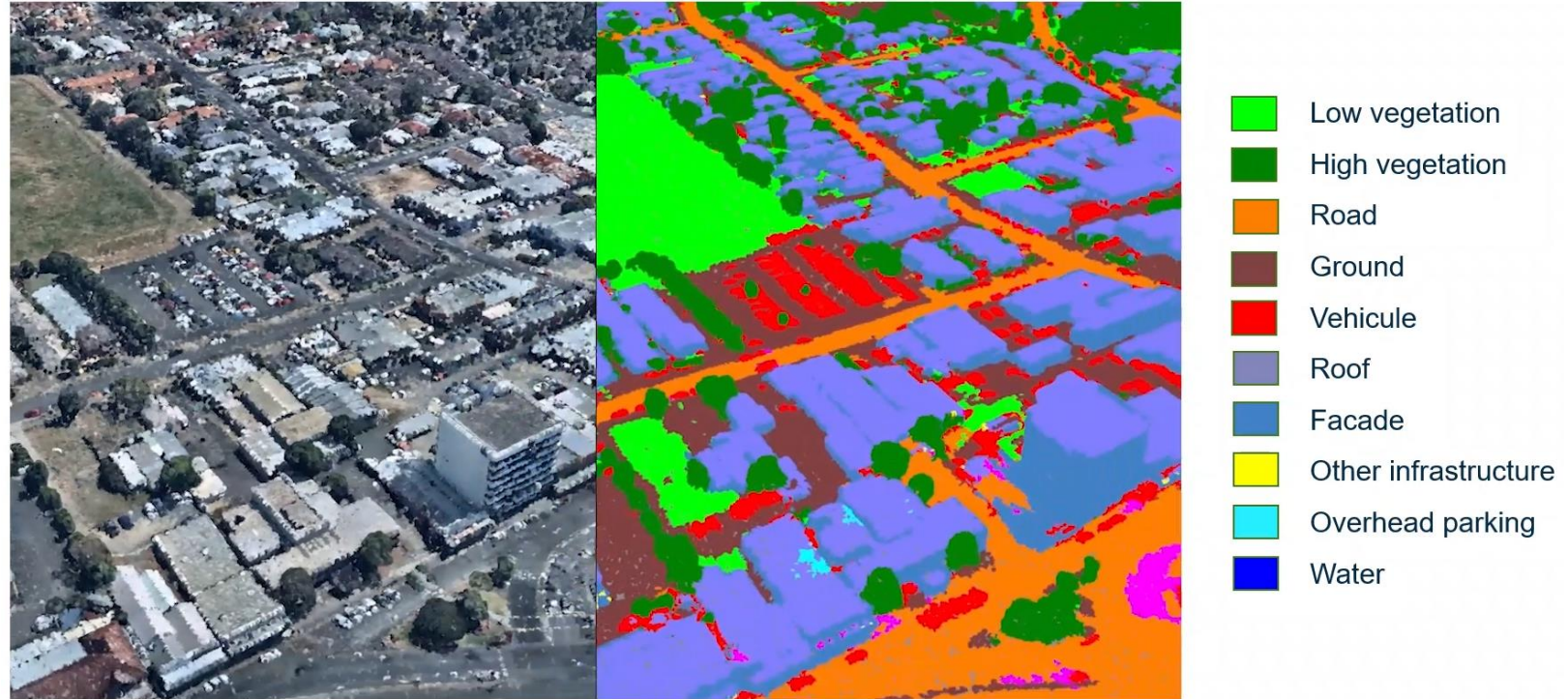


**Bentley®**  
*Advancing Infrastructure*

# What's next?

## – City-scale semantization

- Ground extraction to prepare design work
- Water extraction for constraints
- Transportation, water or power network detection
- Vegetation extraction

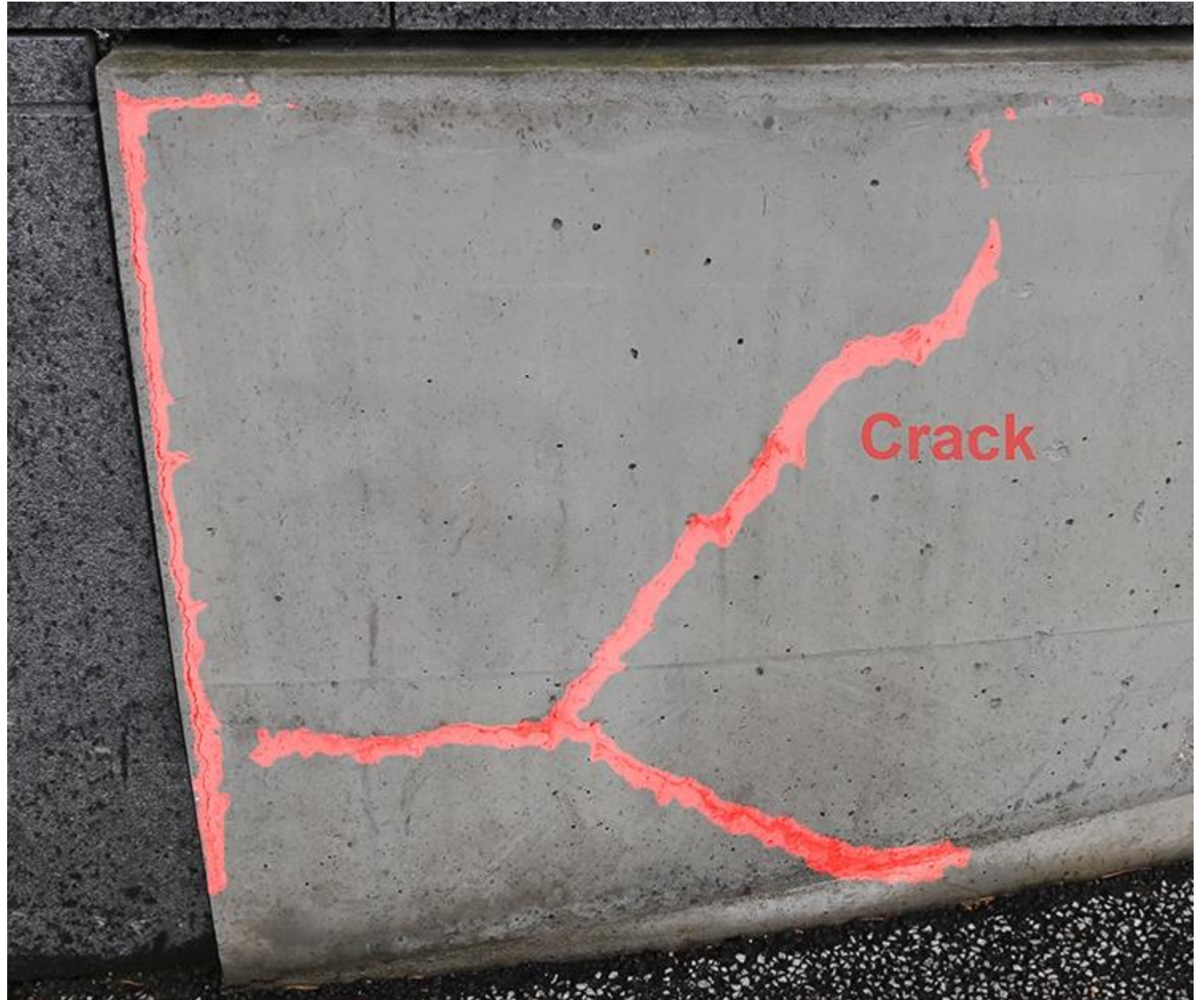




# What's next?

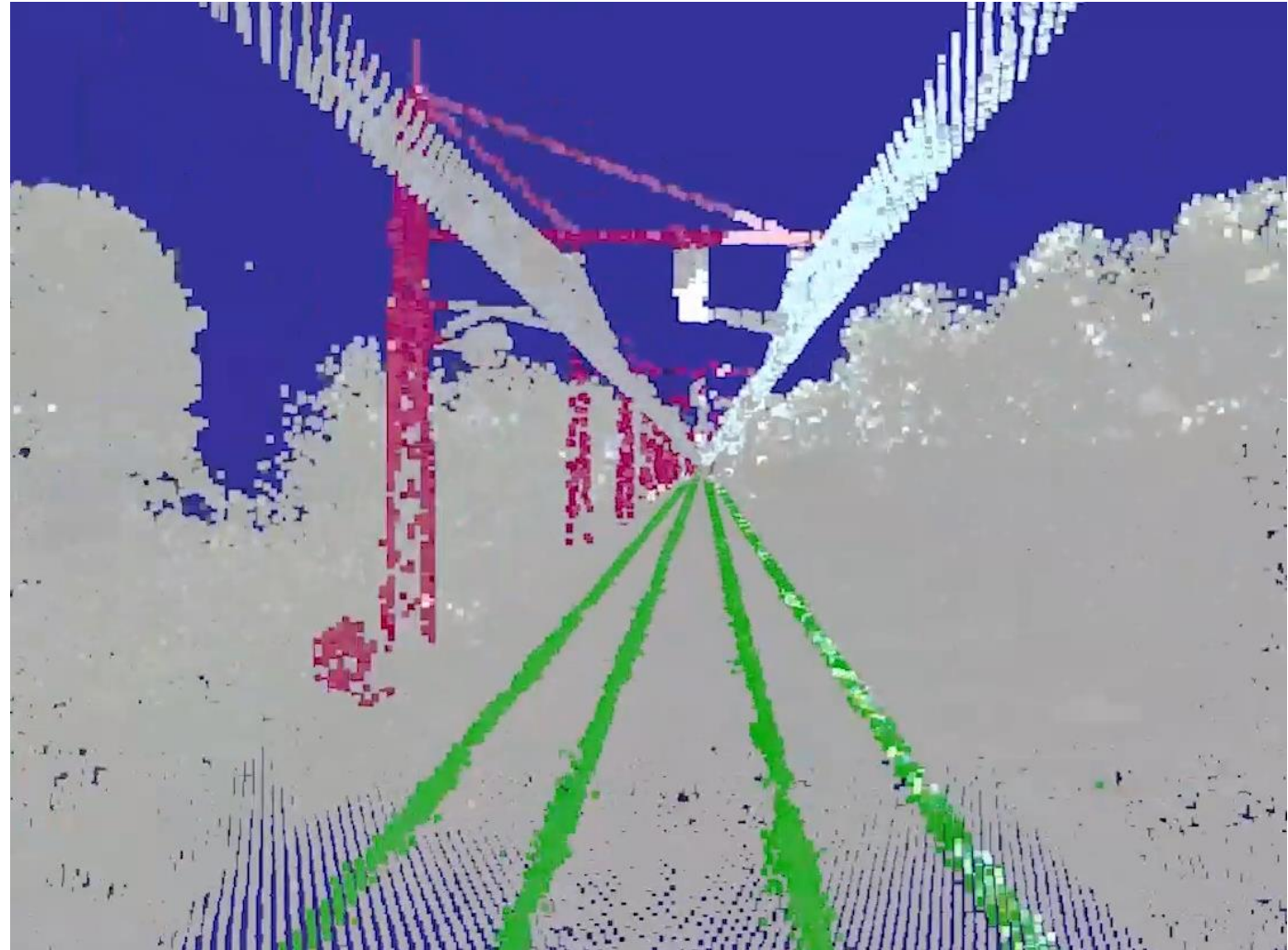
## – Defect detection

- Identify cracks
- Identify rust
- Monitor defect evolution along time
- Improve inspection and response to defect observation



# What's next?

- Learn from pointclouds
  - Rail network semantization
  - Automatic identification of assets and signs
  - Path to autonomous driving





# Early Access Program

- Program Manager?
  - Arnaud Durante - [Arnaud.durante@Bentley.com](mailto:Arnaud.durante@Bentley.com)
- When does it start?
  - Already running
- Prerequisite?
  - Be a user of ContextCapture or ContextCapture Center
  - No cost associated.
  - Commitment to participate to sync meeting with Bentley team and provide feedback
  - Agree to share with Bentley your training data for the purpose of improve the technology (will not be disclosed or disseminated to third parties except in an aggregated form).

# Early Access Program

- Fill the form and we will on-board you

<http://realitymodelingeap.com/contextcapture-insights-eap-request-form/>

## ContextCapture Insights EAP Request Form

*Bentley will use any of the data provided hereunder in accordance with its [Privacy Statement](#) and use of Bentley's website is subject to its [Terms of Use](#). All fields are required. Applying for the EAP does not guarantee your acceptance into the program, and we may contact you for additional information to further qualify you for the EAP.*

---

Company Type

Bentley User ▼

Organization Name

First Name

Last Name

Job Title

Email Address

Country

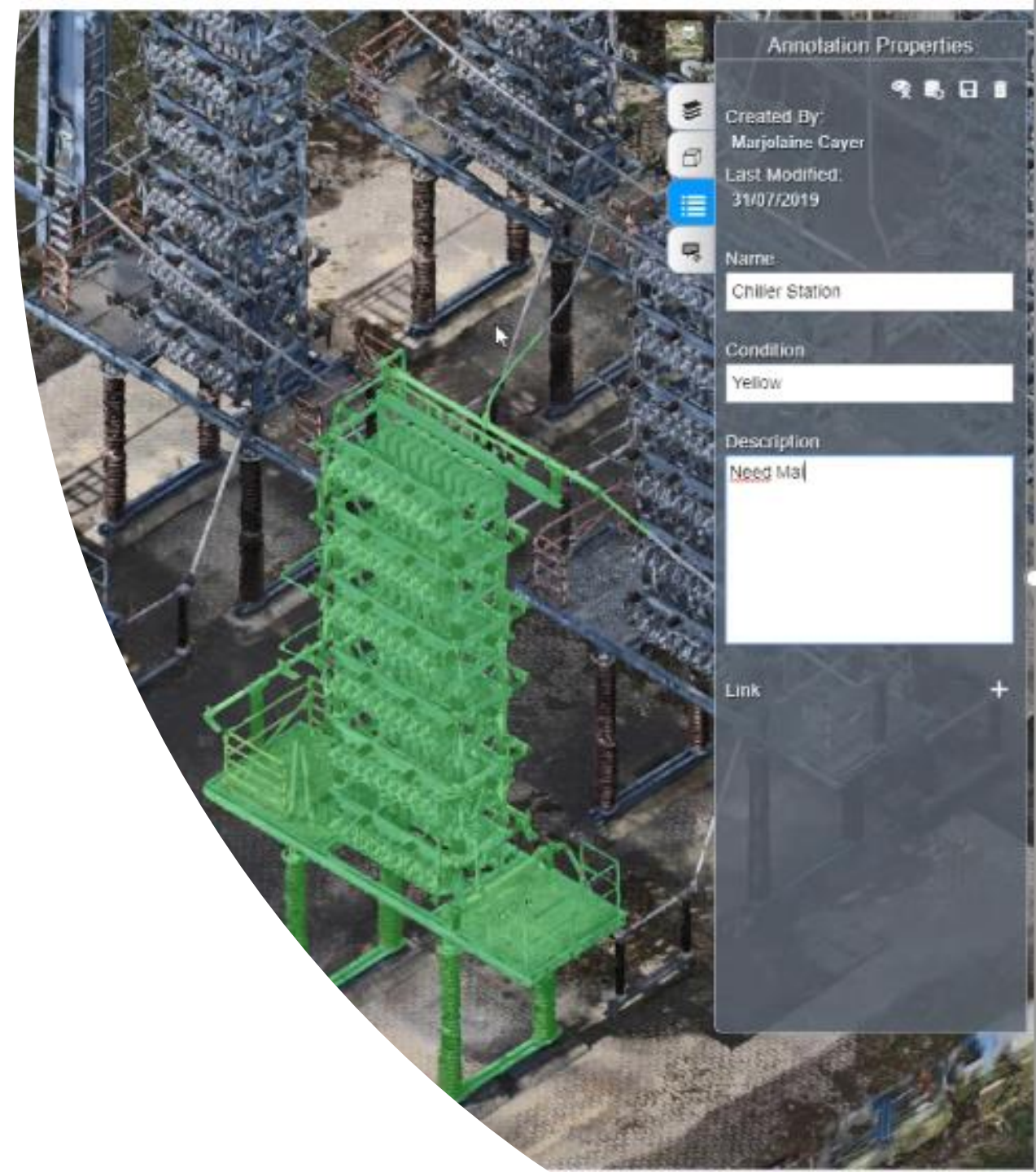
Do you have a current valid license of ContextCapture?

☐ Yes ☐ No



*Add intelligence to your reality models with the ability to classify, tag and add links straight from the web.*

# Reality Data Web Viewer









Release dates...

ContextCapture Insights – 2020

Reality Data Web Viewer – Released

# Thank you!