



ProjectWise AutoCAD Civil 3D Integration

Dan Cutler
November 2019

Bentley[®]
Advancing Infrastructure



*Why integrate Civil 3D
with ProjectWise?*

An aerial photograph of a winding asphalt road with yellow lane markings, set against a blue-tinted background. Five dark blue text boxes with white text are overlaid on the right side of the image, each preceded by a small blue vertical bar. The text boxes contain the following information:

No mapped network drive required

All the benefits of a Common Data Environment

Civil 3D Stability

File Performance: Delta File Transfer & Caching

Easiest way to share a Civil 3D Project



*What does Civil 3D
integration provide?*



Integrated up to C3D 2019 [add-ins for pre-2019](#)

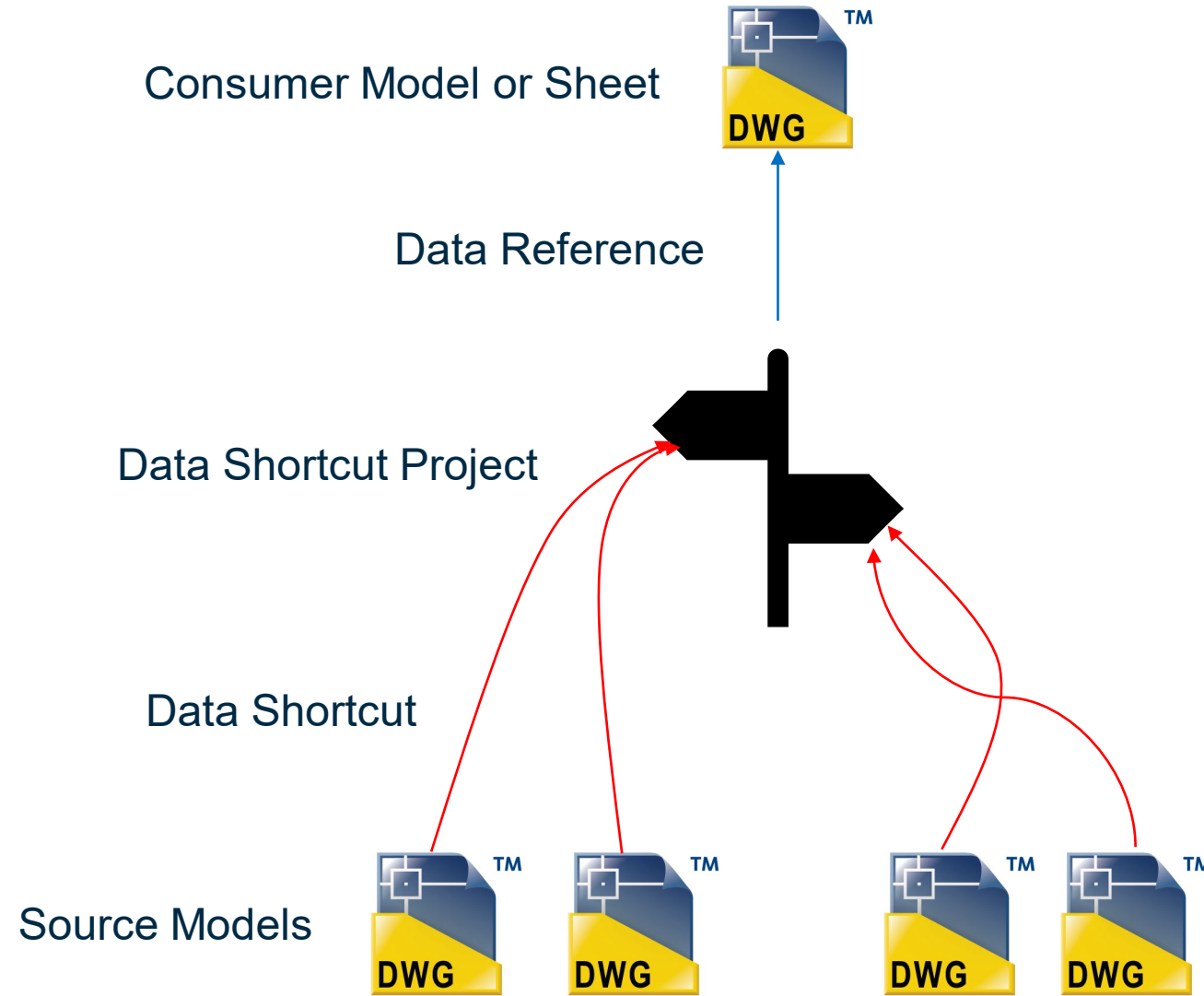
ProjectWise Ribbon Tools

Working Folder Integration

Surface Integration

Prospector Palette Integration

System Variables



Civil 3D Projects involve 2 main processes:

- Creating data shortcuts from source drawings
- Creating data references to source objects in source drawings



Terms & Definitions

Data Shortcut

A complete reference copy of an object that can be imported into one or more other drawings/models. Data shortcuts can be created for surfaces, alignments, profiles, pipe networks and view frame groups.

Source Drawing

The drawing/model (.dwg) that contains original (i.e. not referenced) Civil 3D objects.

Consumer Drawing

The drawing/model (.dwg) that references Civil 3D objects.

Terms & Definitions

Working Folder

Special directory structure where Data Shortcuts are stored.

Stored as absolute paths, formerly requiring a common mapped drive for collaboration.

.CivilDSproj

In ProjectWise the Civil 3D Working Folder is managed as a single zip file with the extension .CivilDSproj.

This file is added to the reference set of any Data Shortcut Source File.

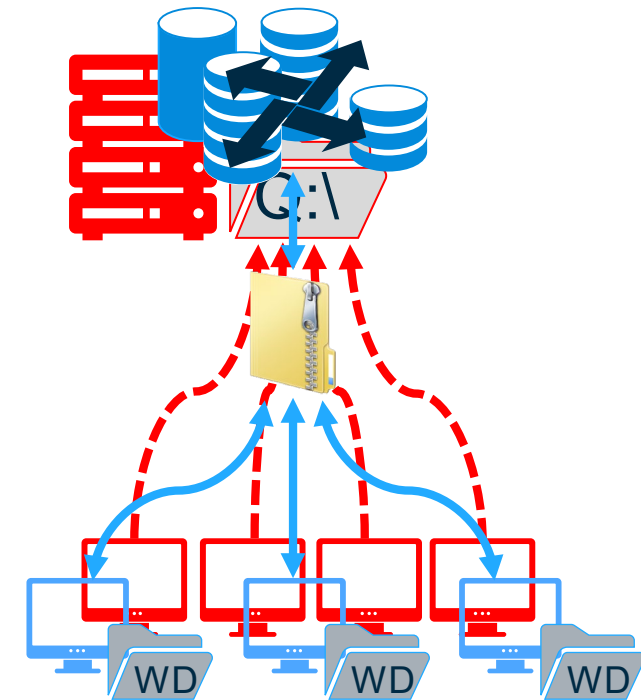
At the time of access, the .CivilDSproj file is unzipped to the user working directory.

Paths are automatically remapped during extraction. ProjectWise synchronizes changes as edits are made.

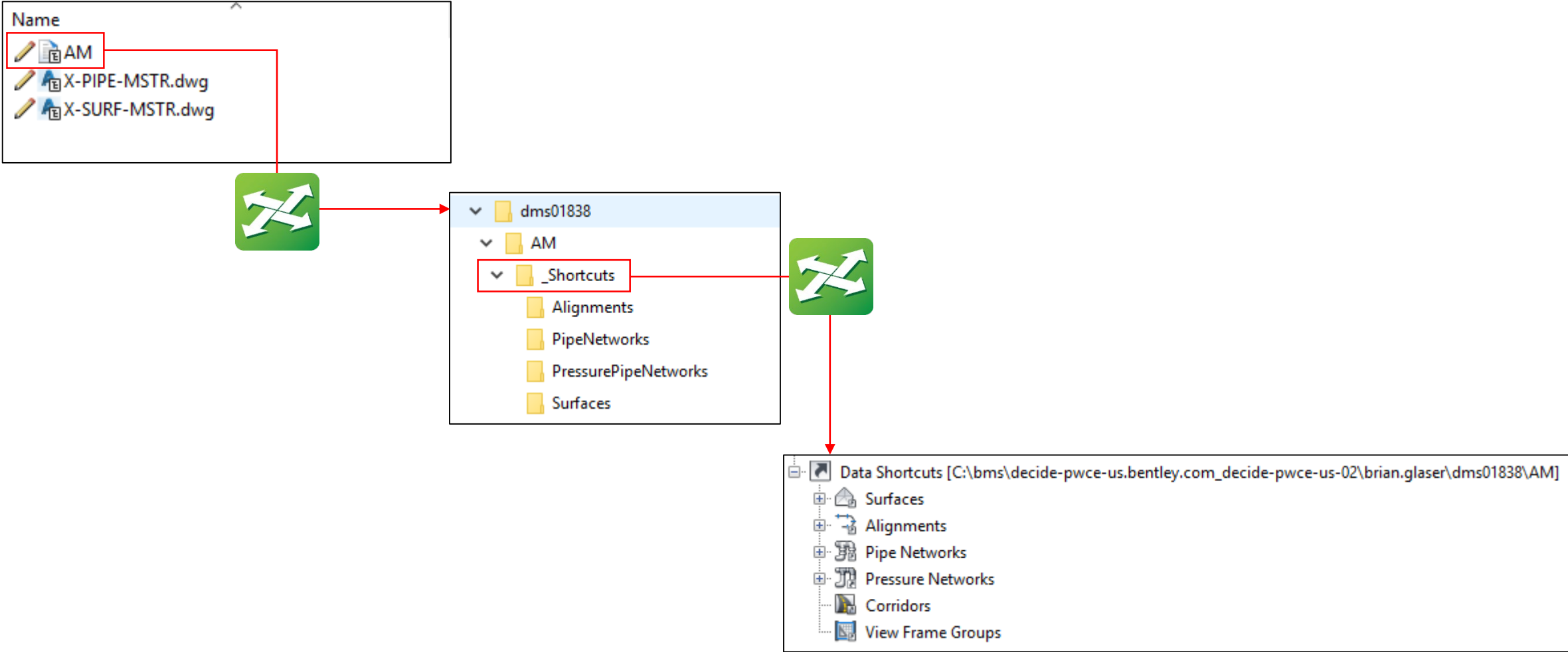
Data Shortcut Projects

- Surface, alignment, profile, pipe network references stored as XML files in a special folder structure called a Working Folder
- Working Folder converted to zip folder with .CivildSProj file extension
- Zipped folder delivered and unzipped to user working folder
- Managed as a part of a ProjectWise document set
- .CivildSProj check in/out optimized to allow real time collaboration

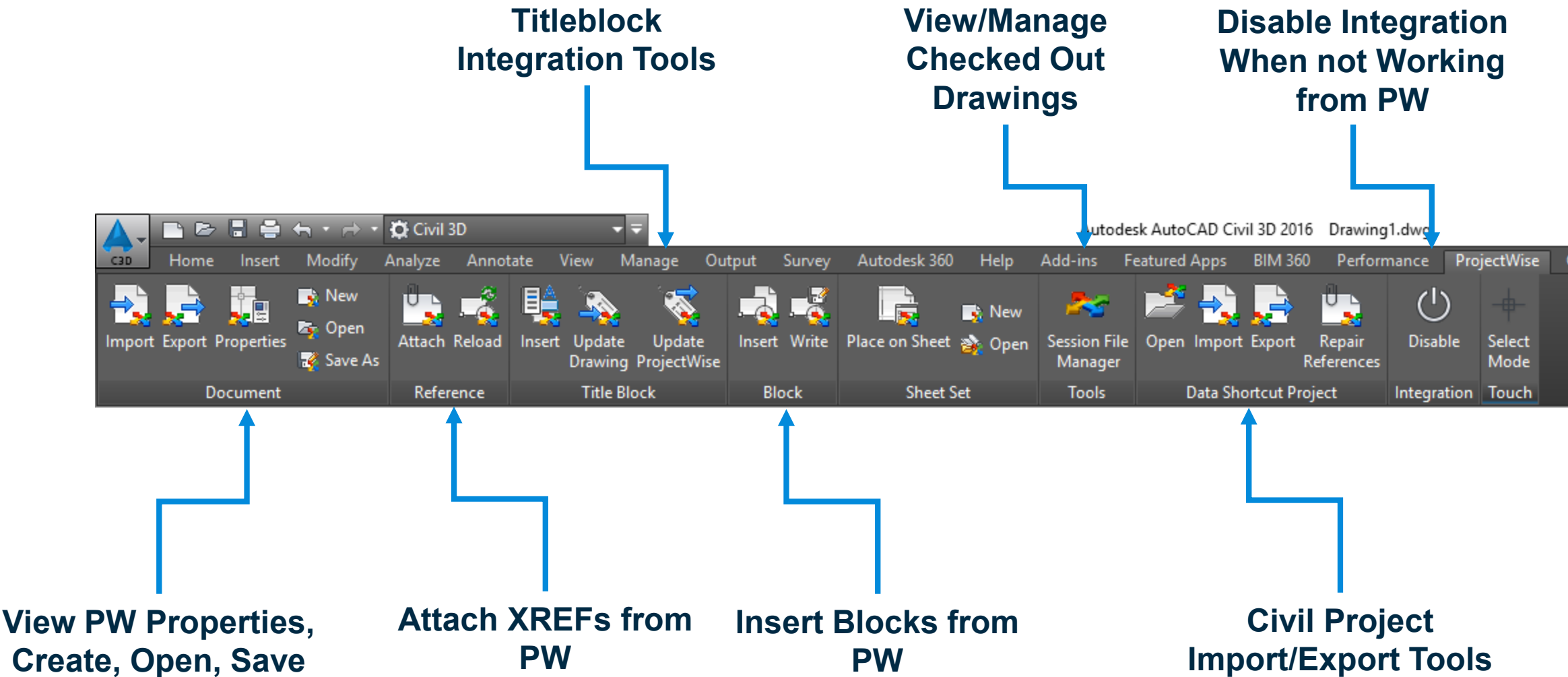
ProjectWise Integration Networked Drive



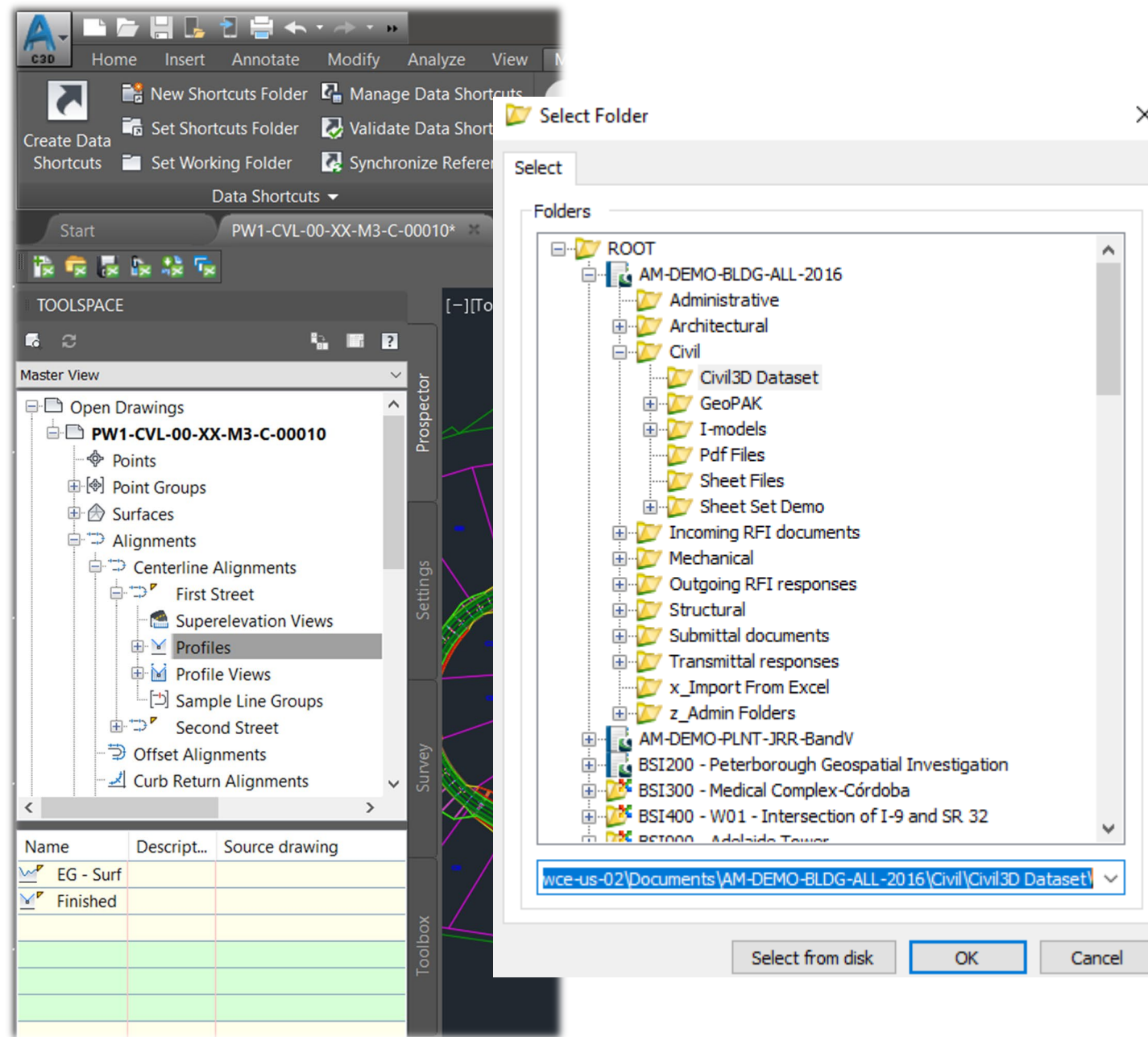
Extraction Process



Ribbon



ProjectWise File Browser integrated into Toolspace within Civil3D for various operations



Unchanged Shortcut & Reference Workflows

Create Data Shortcuts

Share Data

Selected objects will be accessible to all users who point to the same working folder. These shortcuts are available in the Prospector.

When you create a data shortcut of a corridor, data shortcuts are automatically created for its baselines.

Object	Status	Description
<div>Alignments</div>		
<div>Centerline Alignments</div>		
<div>2 EX SSWR NORT...</div>	Already created	
<div>Profiles</div>		
<div>DemoSurf...</div>	Already created	
<div>1 EX SSWR EASTW...</div>	Already created	
<div>Profiles</div>		
<div>DemoSurf...</div>	Already created	
<div>Pipe Networks</div>		
<div>3 EX STRM EASTWEST</div>	Already created	
<div>1 EX SSWR EASTWEST</div>	Already created	
<div>2 EX SSWR NORTHSO...</div>	Already created	
<div>4 EX STRM NORTHSO...</div>	Already created	
<div>Pressure Networks</div>		

☐ Hide already published objects

Pick in drawing

OK

Cancel

Help

Create Surface Reference

Source surface:

DemoSurface

Surface layer:

C-TOPO

Properties	Value
<div>Information</div>	
<div>Name</div>	DemoSurface
<div>Description</div>	Description
<div>Style</div>	Contours 2' and 10' (Background)
<div>Render Material</div>	

OK

Cancel

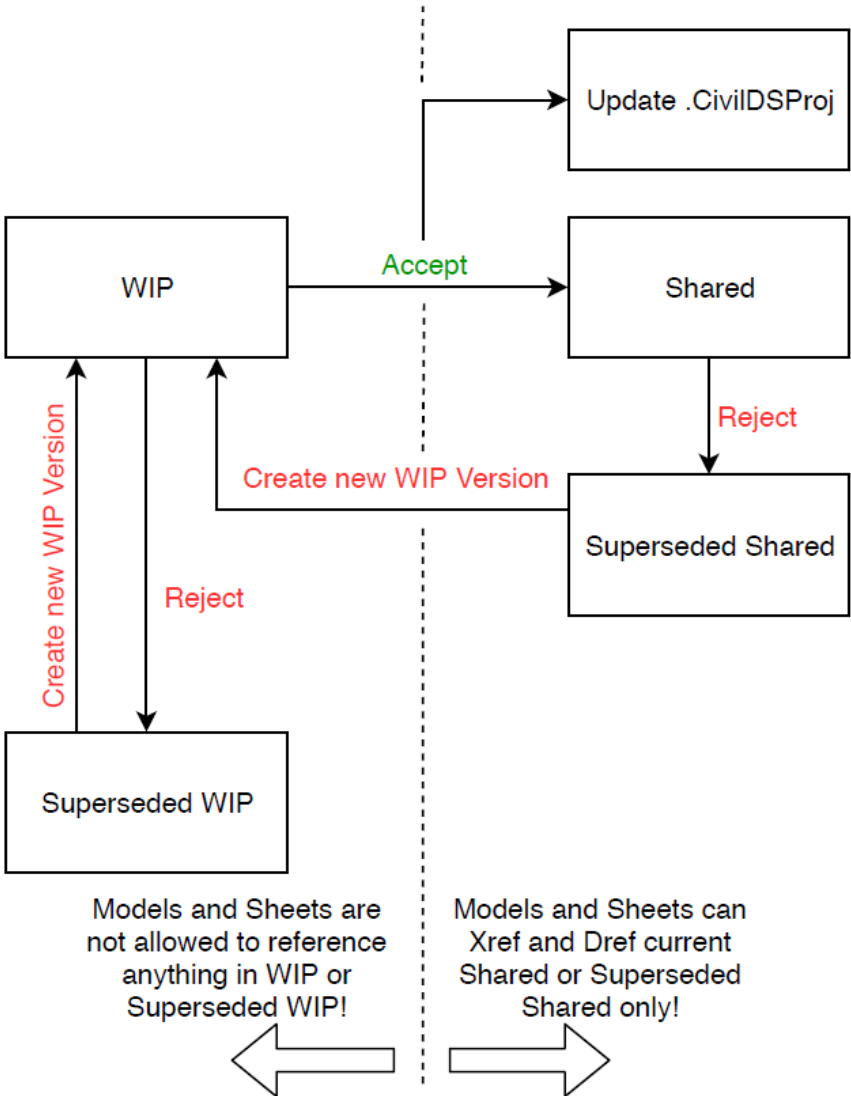
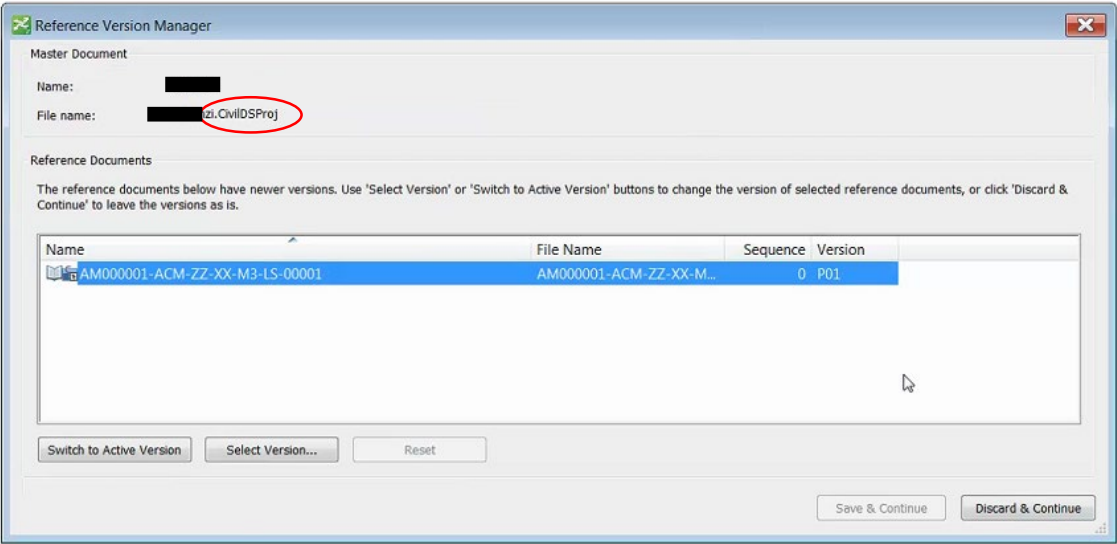
Help

13 | WWW.BENTLEY.COM | © 2019 Bentley Systems, Incorporated

Bentley®

Civil 3D Approvals Workflow

Lock References to Versions



Models and Sheets may only Data Reference or X-Reference from a Shared or Superseded Shared document

Any time a WIP model is Accepted, update the .CivilDSProj to point to the new Shared Version

Tips for Success

- Do not work outside of integration
- Always have a live connection to datasource
- No managed export
- Always set working folder
- Stay out of the PW Working Directory
- Make careful, conscious decisions
- Avoid surface companion files
- Communicate with your team!!

Resources

- docs.bentley.com link to Civil 3D help pages
- Civil3D [Project Management Tutorials](#)

Action Plan

- Identify pilot
- Engage application engineer and your civil team