

MicroStation

Update 17 and 17.1

Product Management Team
Engineering Applications



Karol Kempski
Product Manager
Karol.Kempski@Bentley.com

MicroStation Product Manager



Ronald Zeike
Senior Consultant
Ronald.Zeike@Bentley.com

MicroStation Senior Consultant

Windows 11 Certification

General

Provide MicroStation full functionality with Windows 11

- **Problem/Pain** | MicroStation not Windows 11 compatible.
- **For** | All Bentley MicroStation users
- **Value** | All users with Windows 11 installed can work in MicroStation!

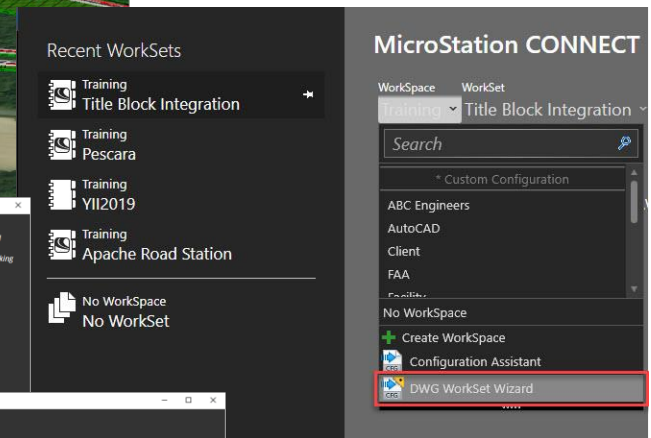
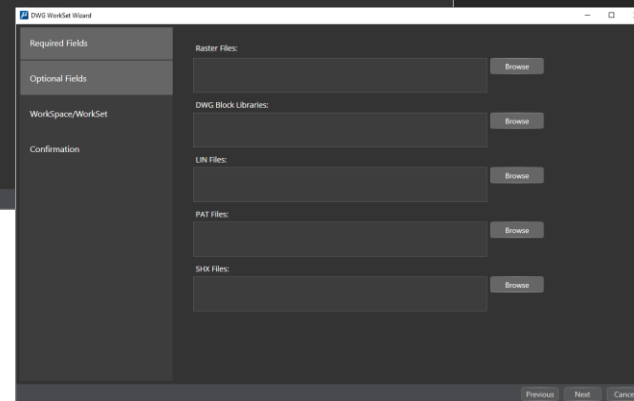
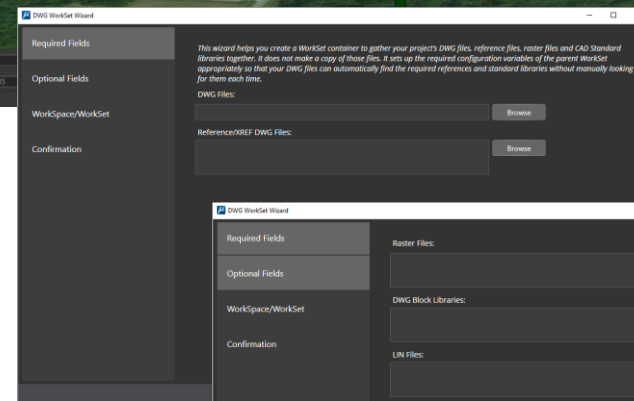
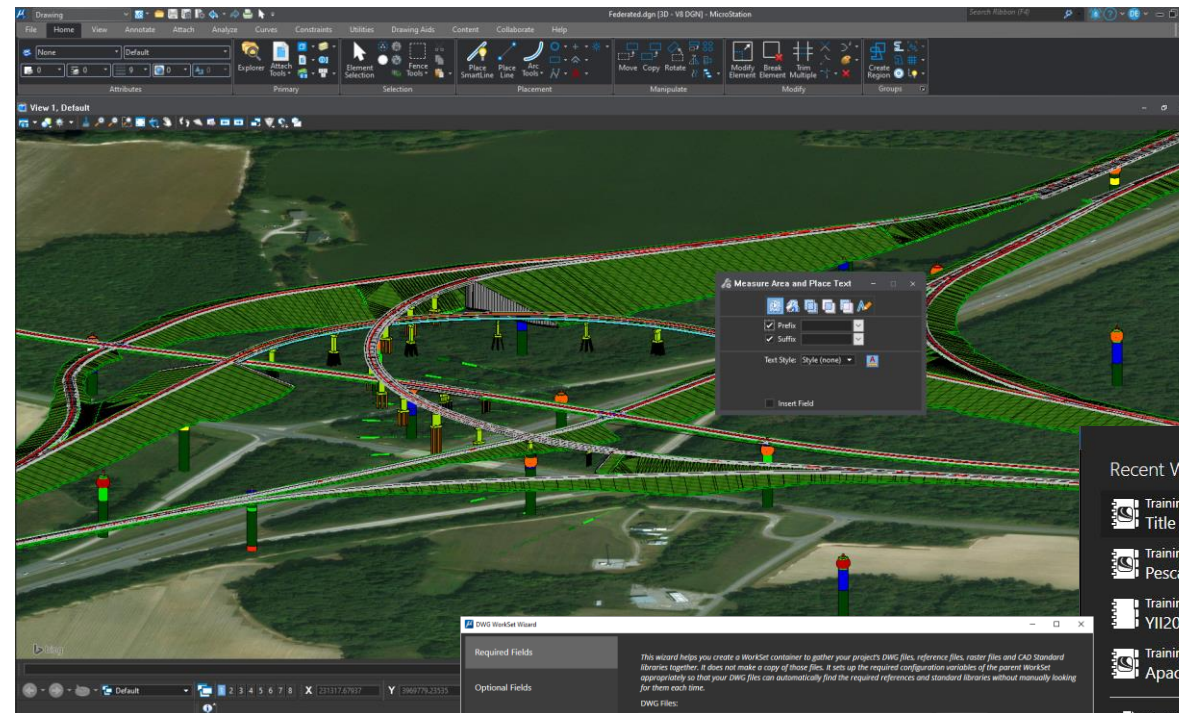


Product Initiative | RealDWG 2023 Support

2D Drawing

Open, Edit and Save RealDWG 2023 and previous formats.

- **Problem/Pain** | Mixed DGN and DWG workflows are continuously evolving and require regular support
- **For** | Engineers and Architects
- **Value** | Interoperability and compatibility between MicroStation and AutoCAD



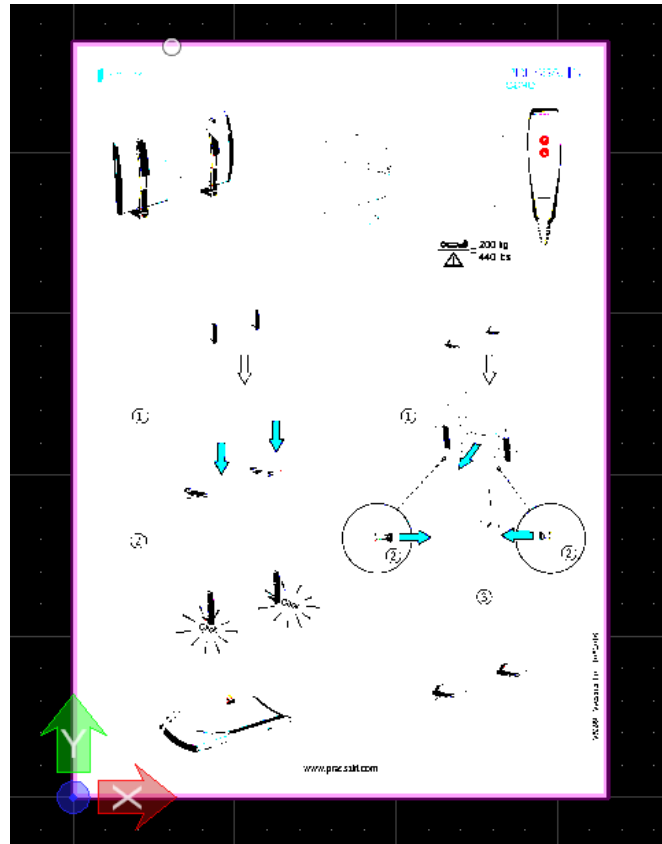
PDF Vector

Open PDF As Vector Geometry - 17.1

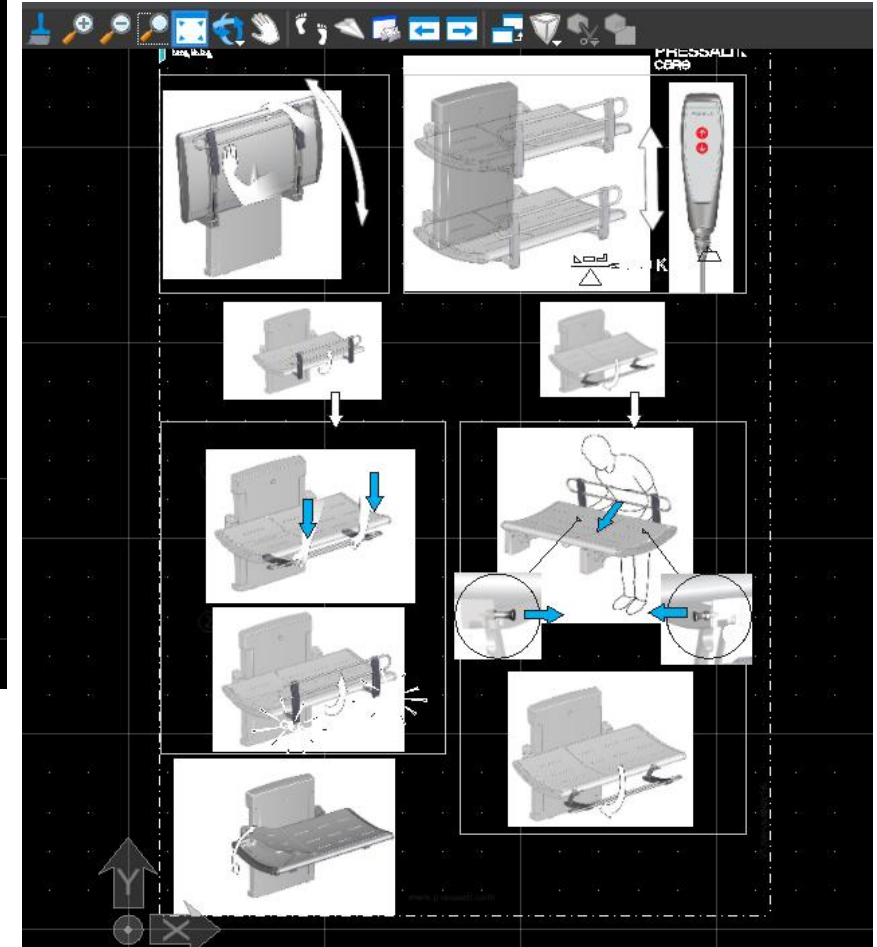
DWG option

Import PDF vector data with DWG

- **Problem/Pain** | Redrawing elements when working in a DWG with importing PDF Vector Data
- **For** | Engineers and Architects
- **Value** | Save Time from redrawing elements and parts of drawings in DWG files



MS_IMPORT_USINGADOBEPDF

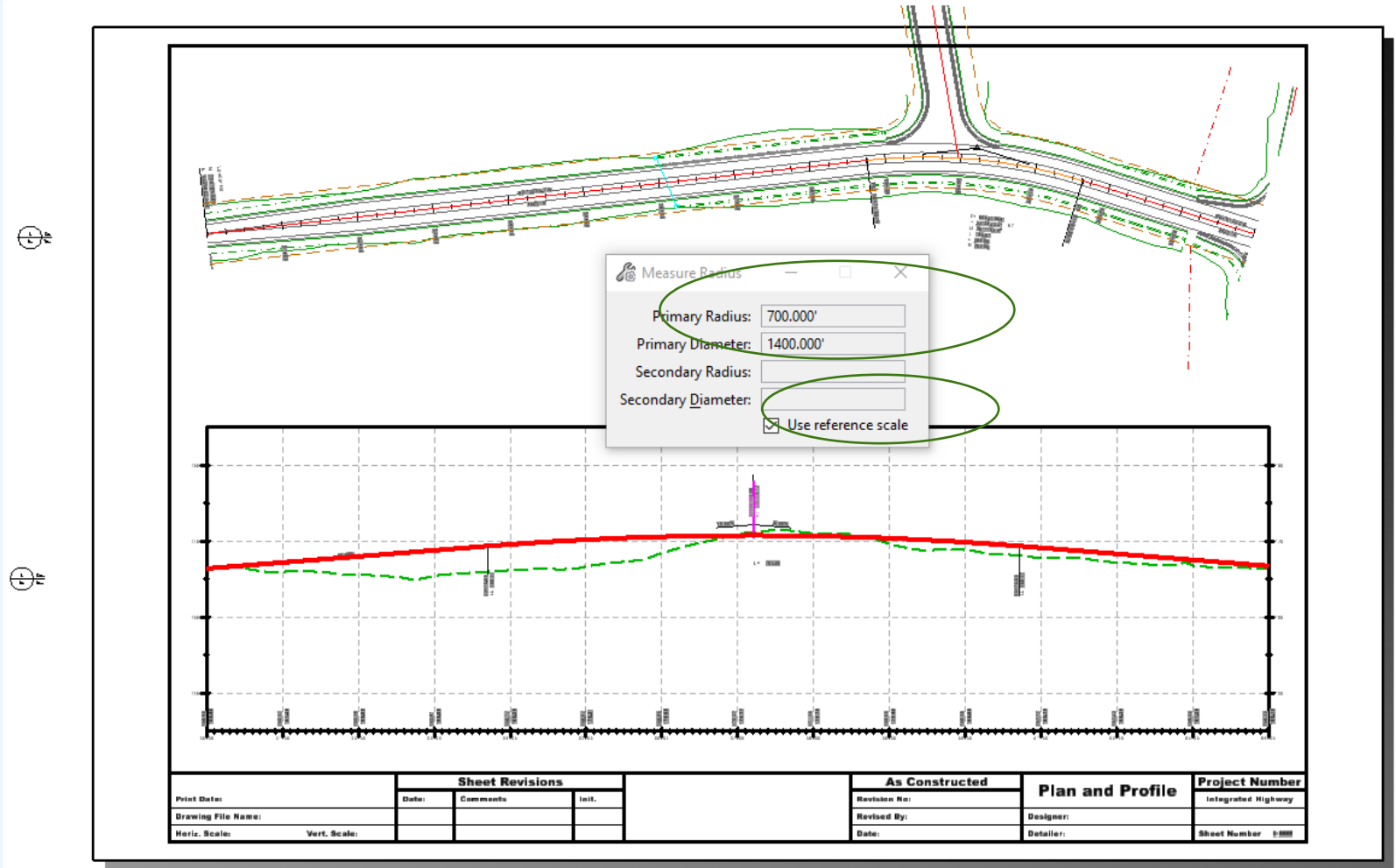


Measuring Model Units in Sheets

2D Drawing

Enable true model measurements in Sheets.

- **Problem/Pain** | Sheet models measure in Paper Units, not Model Units
- **For** | Reviewers, Engineers, and Designers
- **Value** | Faster, efficient workflow and verification while working in Sheet Models.



File Home View Annotate Attach Analyze Curves Constraints Utilities Drawing Aids Content Collaborate Help

Attributes: None | Default | 0 | 0 | 0 | 0 | 0

Primary: Explorer, Attach Tools

Selection: Element Selection, Fence Tools

Placement: Place SmartLine, Place Line, Arc Tools

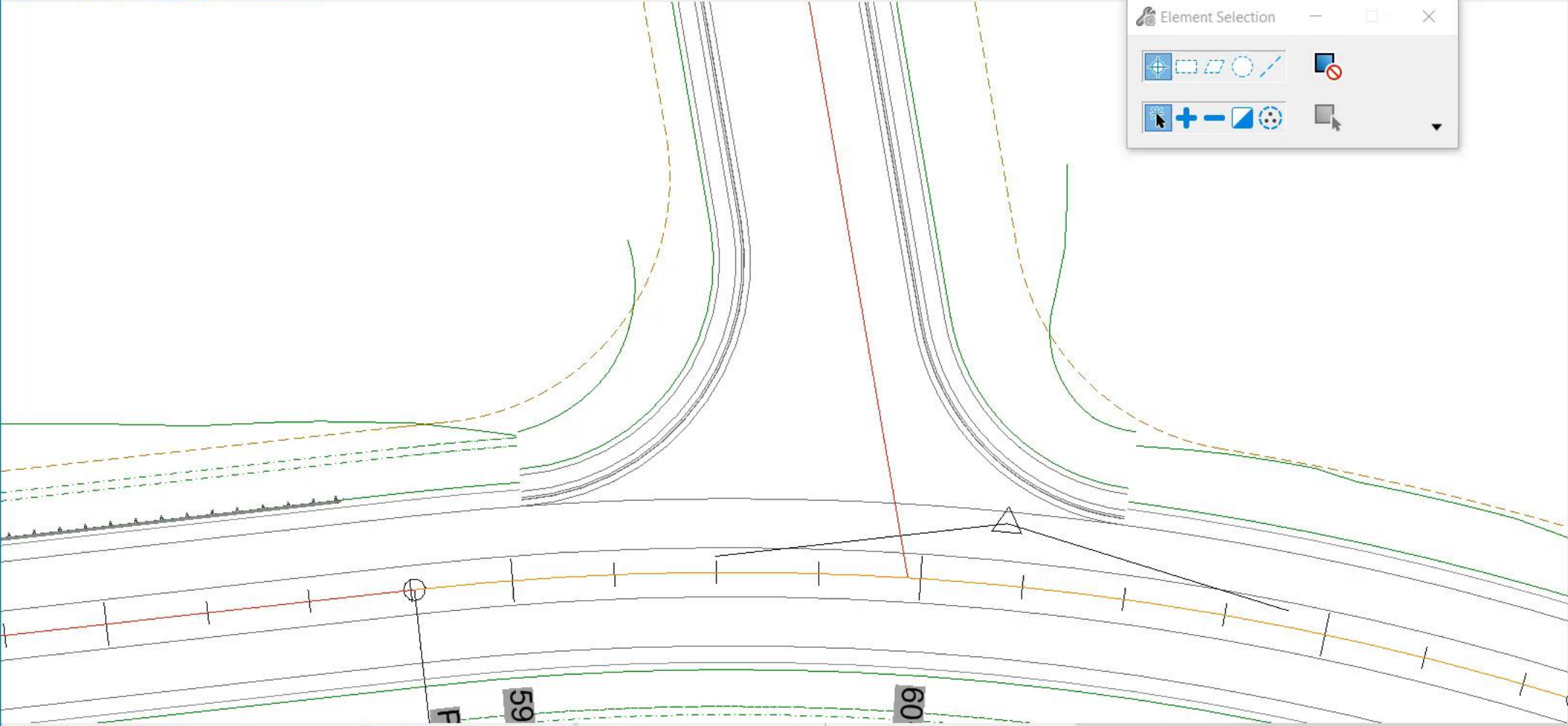
Manipulate: Move, Copy, Rotate

Modify: Modify Element, Break Element, Trim Multiple

Groups: Create Region

View 1, Plan 1 [Sheet] | Properties

Navigation icons: Pan, Zoom, Rotate, etc.



Properties

To see properties something must be selected.

Plan 1 [Sheet] Views | 1 2 3 4 5 6 7 8 | X 1.768 | Y 1.756

Element Selection > Identify element to add to set | Radius = 1.206'

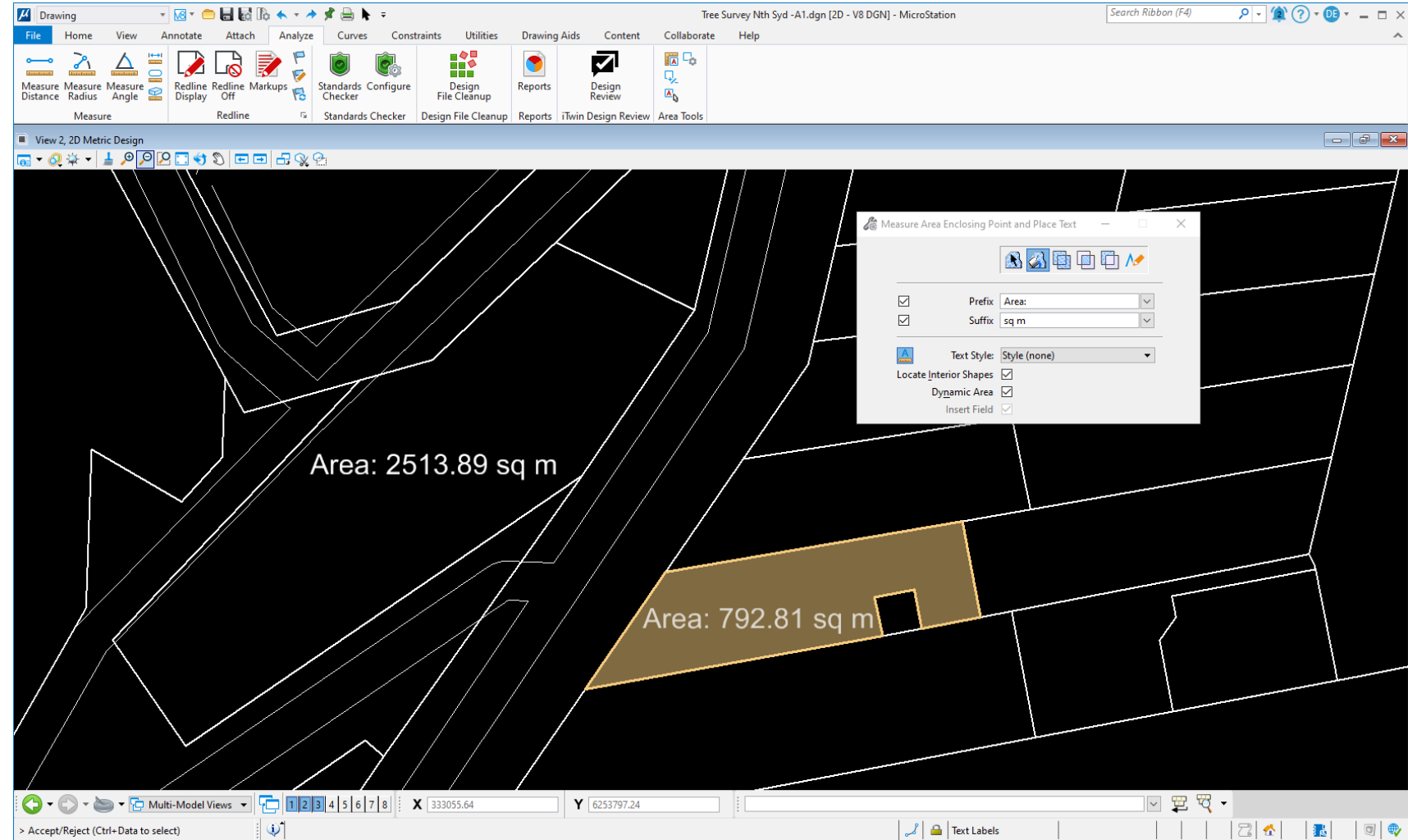
Default

Area Tools

2D Measuring

Place Measurements as Text

- **Problem/Pain** | Placing area measurements requirements multiple steps
- **For** | Reviewers, Engineers, and Designers
- **Value** | Faster, efficient workflow, brings back previous user requested add on



File Home View Annotate Attach Analyze Curves Constraints Utilities Drawing Aids Content Collaborate Help

Text Labels Text Labels

Attributes: 0 0 0 0 100

Primary: Explorer, Attach Tools

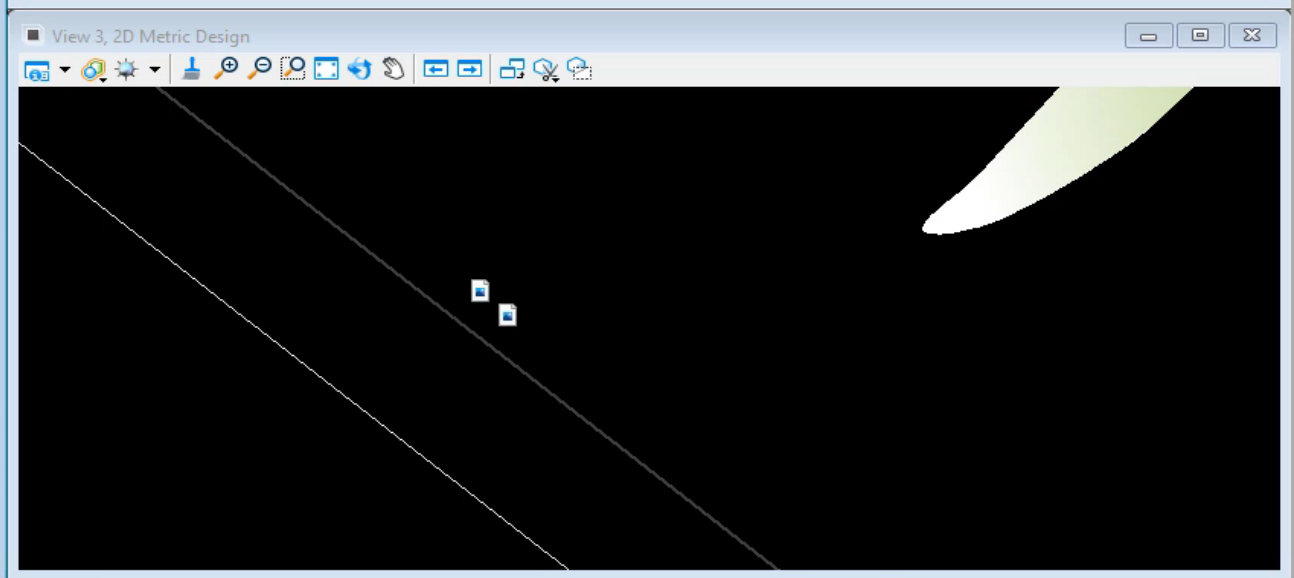
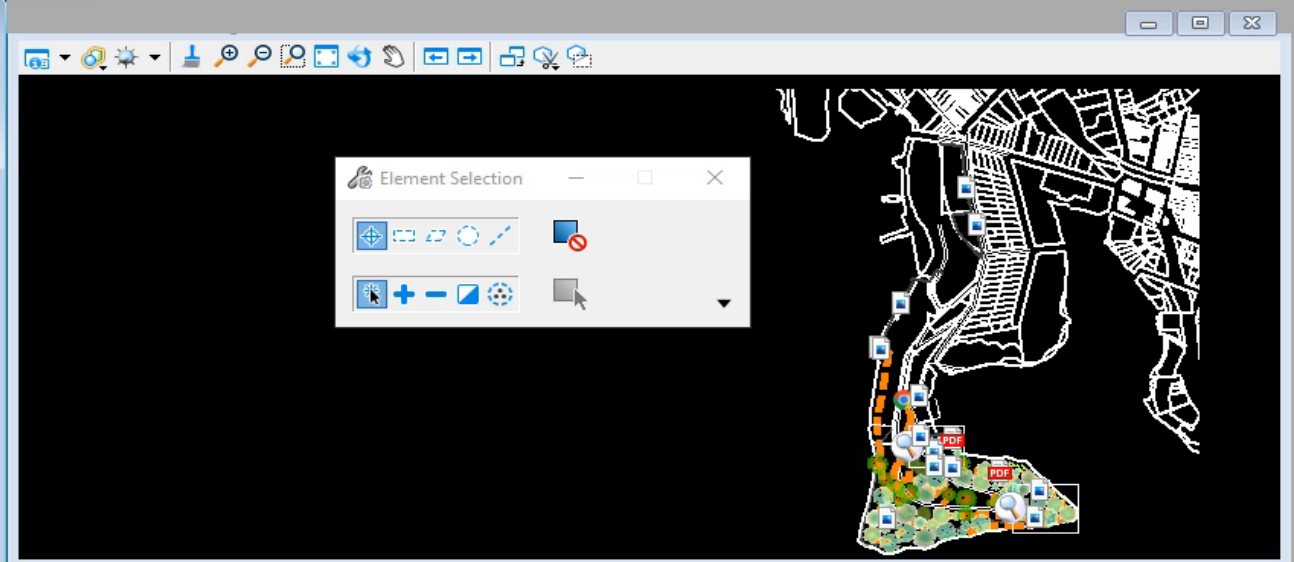
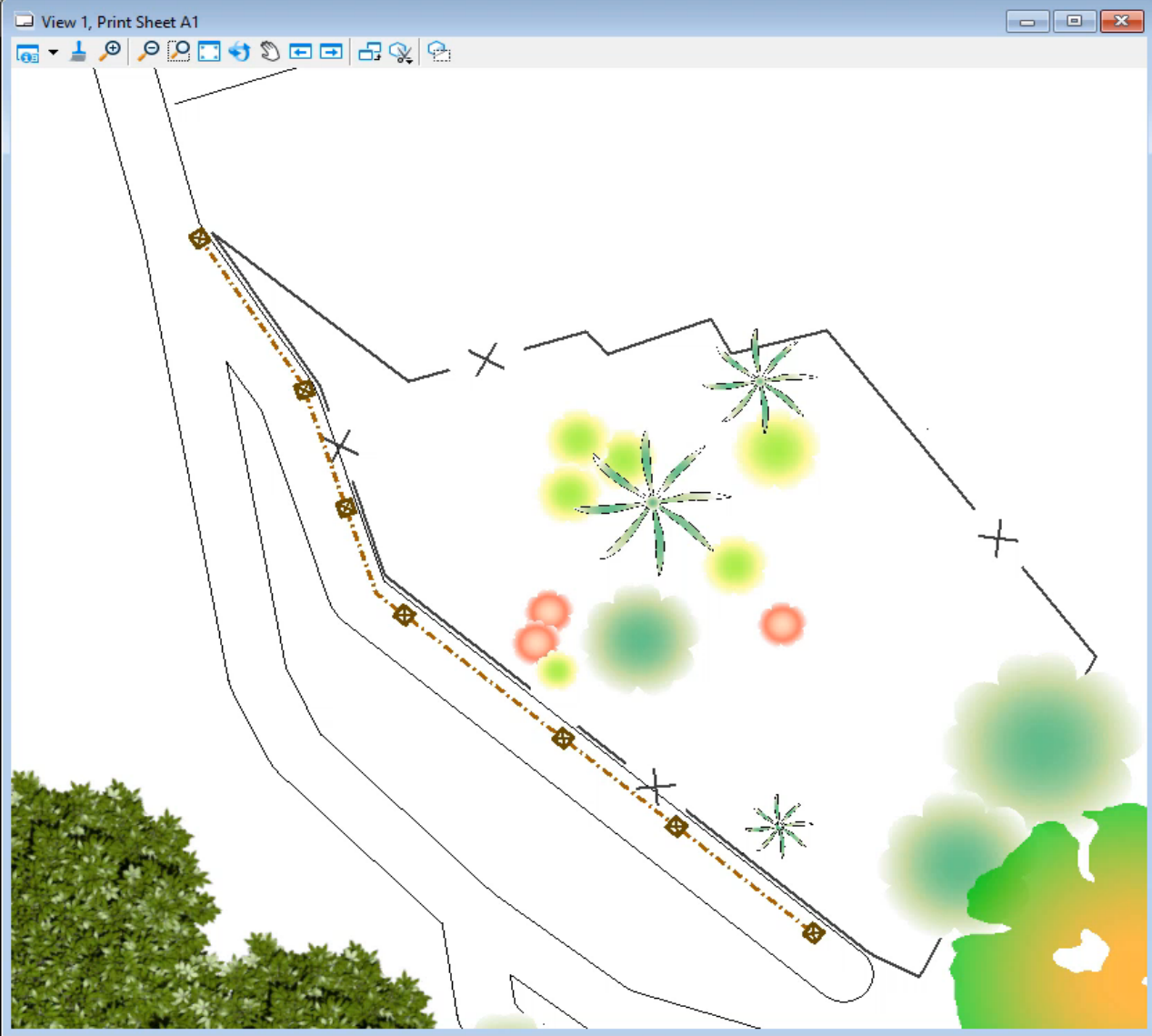
Selection: Element Selection, Fence Tools

Placement: Place SmartLine, Place Line, Arc Tools

Manipulate: Move, Copy, Rotate

Modify: Modify Element, Break Element, Trim Multiple

Groups: Create Region

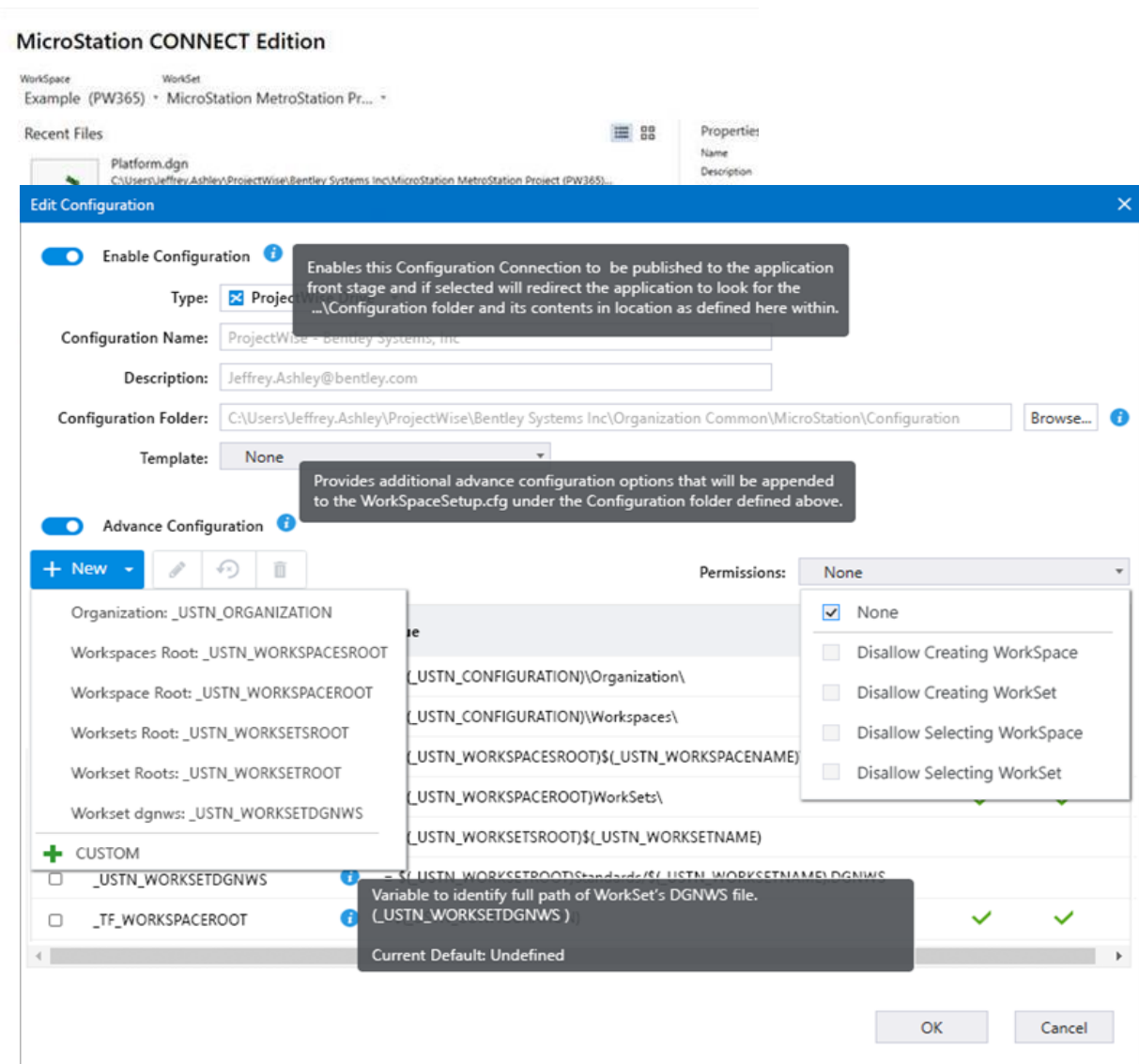
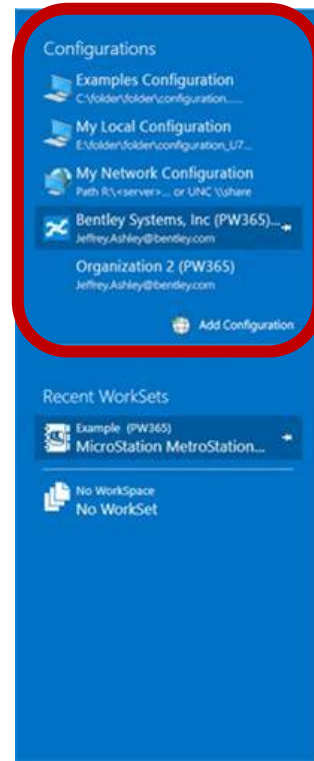


Manage Configuration/ProjectWise Drive Connector

General

Allows users to access Configurations and Data on ProjectWise Drive directly from MicroStation.

- *Problem/Pain* | Sharing Configurations is error prone and confusing
- *For* | CAD Administrators
- *Value* | Easy sharing of Configurations and associated data



Manage Configuration/ProjectWise Drive Connector

IRS Web Component

General

Updated Issue Resolution Service Web Component.

- **Problem/Pain** | Limited functionality of previous implementation
- **For** | Engineers and Reviewers
- **Value** | Improved functionality and way to expand future capabilities

The screenshot shows a web application window titled 'Manage Issues'. At the top, there is a search bar and a dropdown menu for 'Type' set to 'Field Data'. Below this, there is a list of three issues, each with a thumbnail image, a title, a user name, a timestamp, and a status icon.

Issue ID	Title	User	Timestamp	Status
FID-00004	Review Lamp Post lights	Alicia Rodriguez	12/27/2021 9:36 AM	Yellow (Issue Review)
FID-00003	House	Alicia Rodriguez	10/20/2021 4:14 AM	Red (Issue Open)
FID-00002	Missing Footer	Alicia Rodriguez	08/20/2021 4:52 AM	Red (Issue Open)

State/Status

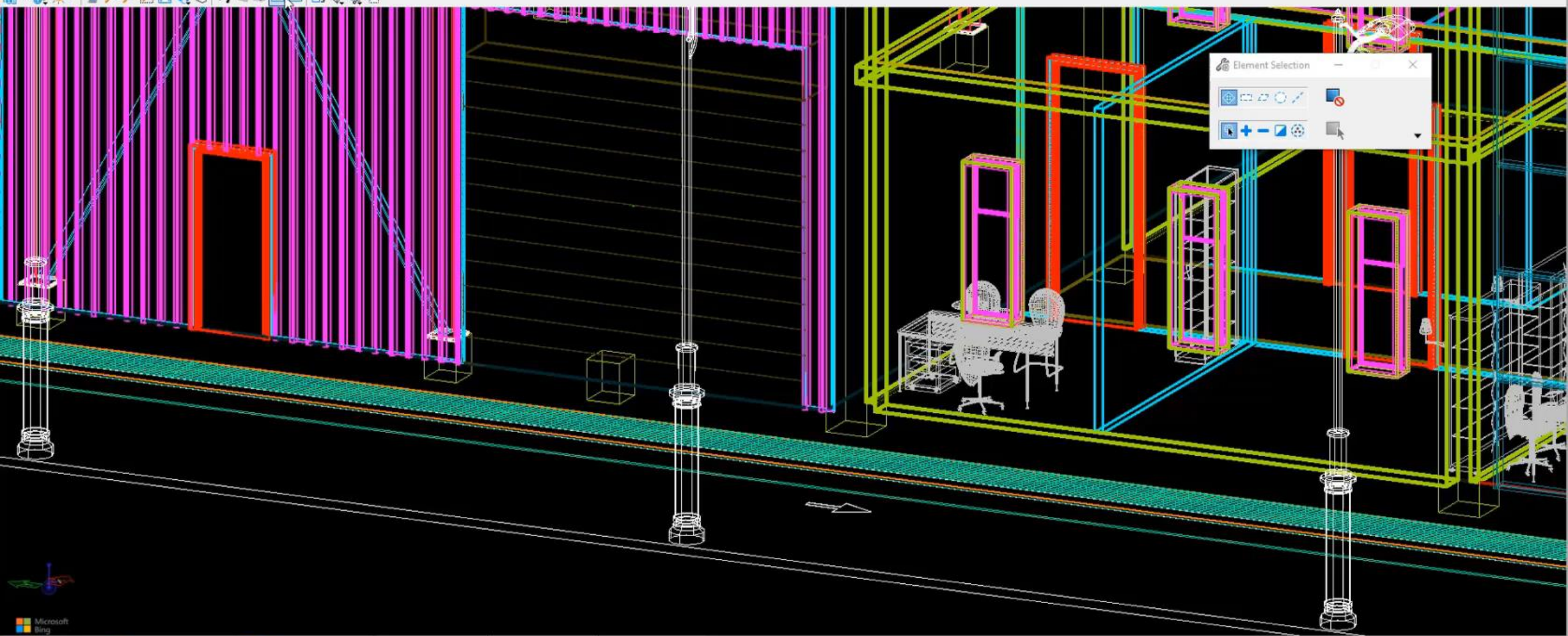
- **Yellow:** Issue Review
- **Red:** Issue Open
- **Green:** Issue Close (approved)
- **Grey:** Issue Closed (void)
- **Orange:** Issue Assigned

File Home View Annotate Attach Analyze Curves Constraints Utilities Drawing Aids Content Collaborate Help

Element Selection Fence Tools Sync to iTwin Attach iTwin Create Manage Issues Open iTwin Project Portal Clash Detection Previous Clash Next Clash Place Label Place Note Cloud by Points

Selection Collaboration Clash Detection Markup Tools

View 1, Design Model



Element Selection

Navigation and selection tools for the 3D model, including icons for pan, zoom, and select.

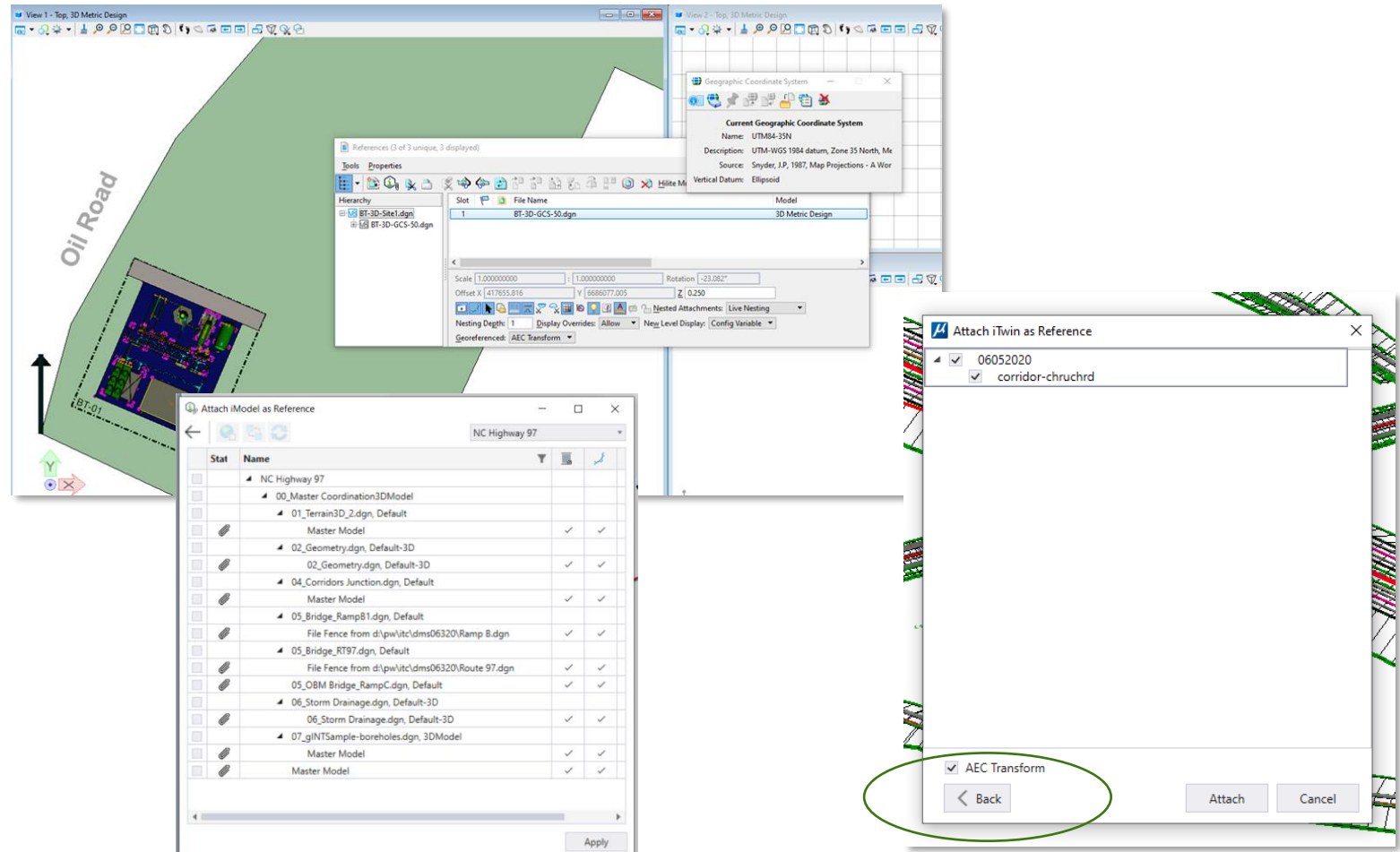


AEC Transform toggle at time of attachment for referencing iTwins

Collaboration

Attach iTwins with AEC Transforms

- **Problem/Pain** | Project North setups for iTwins do not reference into the correct rotation
- **For** | Engineers and Architects
- **Value** | Referenced iTwins at correct AEC Transform allows for easier element placement and manipulation in a relative coordinate system



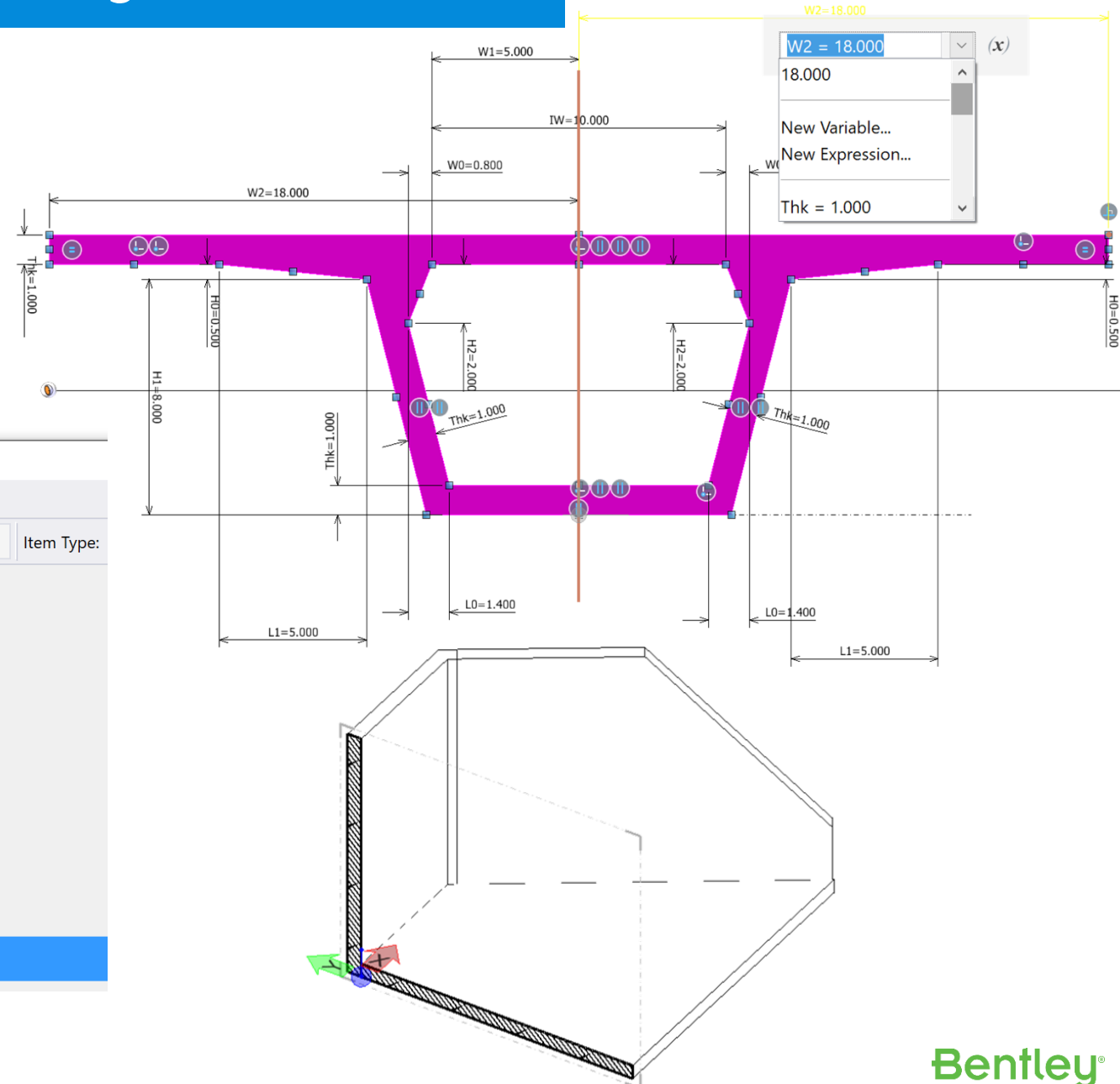
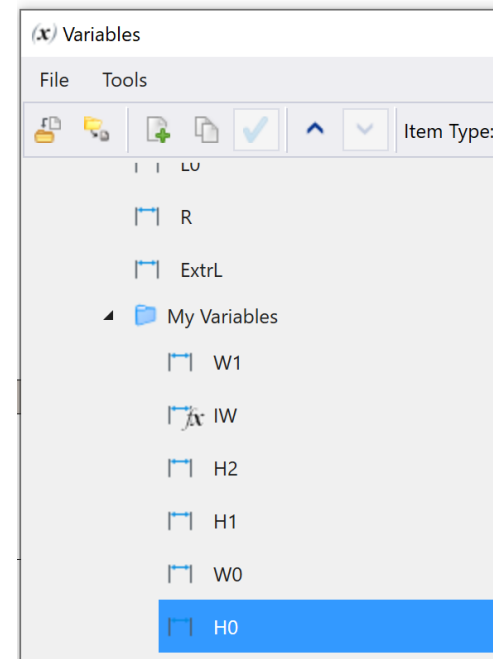
iTwin Powered MicroStation

Product Initiative | Parametric Modeling Enhancements

2D Drawing & 3D Modeling

Improve the usability of the parametric tools.

- **Problem/Pain** | Parametric tools are powerful, but some of the workflows are not as streamlined as one would like
- **For** | Engineers and Architects
- **Value** | Reduced time to create, access and share intelligent and reusable content



(x) Variables

File Tools

Item Type: None

Variables

- Local Variables
 - Thickness
 - Width**
- Variations
 - Variation1
 - Variation2

Properties

Variable Definition

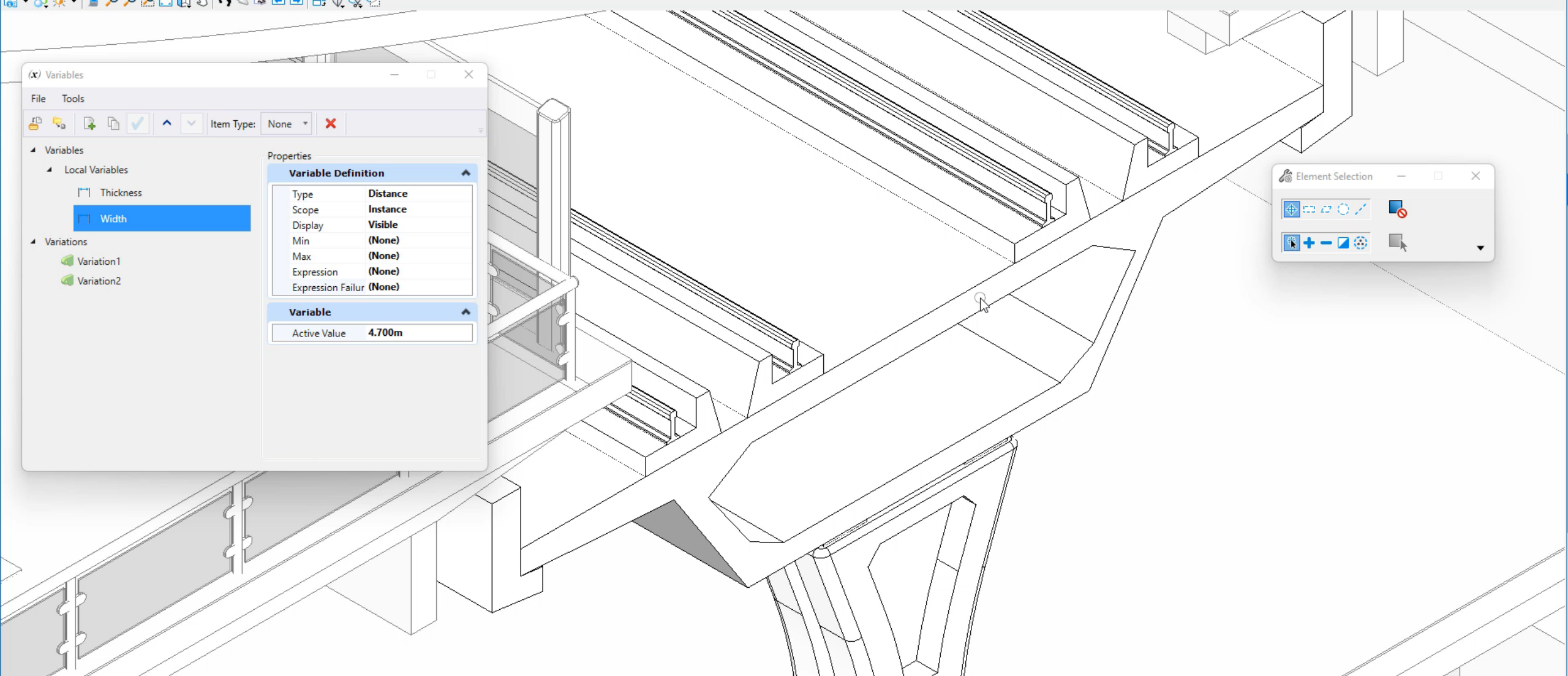
Type	Distance
Scope	Instance
Display	Visible
Min	(None)
Max	(None)
Expression	(None)
Expression Failur	(None)

Variable

Active Value	4.700m
--------------	--------

Element Selection

Identify element to add to set

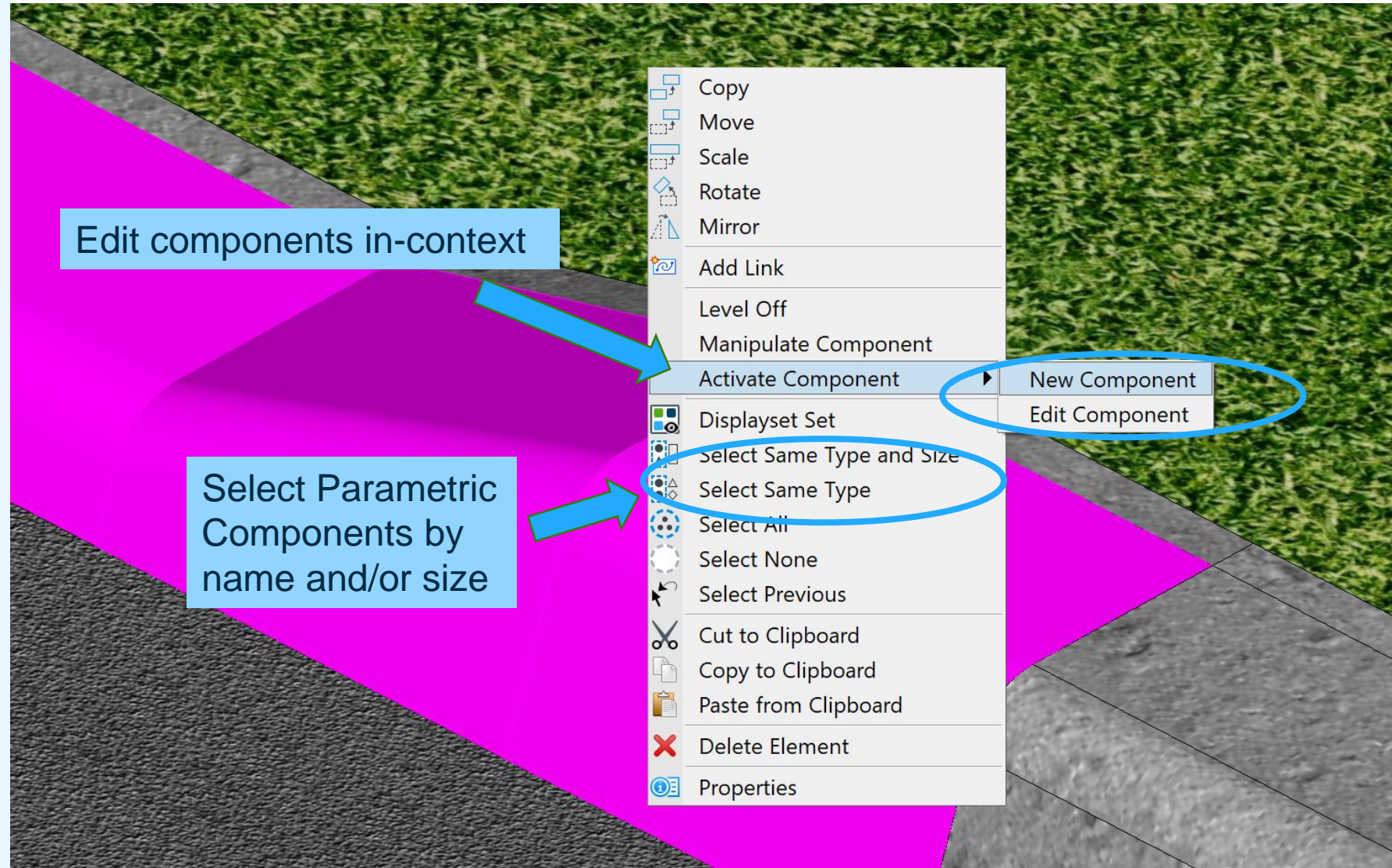


Parametric Components: Intelligent modeling

3D Modeling

Add further intelligence to parametric components.

- **Problem/Pain** | Time consuming, repetitive, manual work in parametric components workflows
- **For** | Engineers and Architects
- **Value** | Automate perforations, use multiple insertion points and re-symbolize components in different view orientations



File Home View Curves Solids Surfaces Mesh Content Analyze Constraints Utilities Drawing Aids Collaborate Help

Slab Cylinder Sphere Cone Torus Linear Solid Extrude Extrude Along Thicken Revolve Loft Cut Fillet Chamfer Hole Protrude Shell Sweep Edge Imprint Taper Face Spin Face Edit Feature Modify Solid Trim Solid Unite Subtract Intersect Delete Piece Associative Extraction Solid Utilities

View 1 - Isometric, Varying_Kerb



Properties

Element Selection

Selection tools: Box, Circle, Line, Arc, Poly, etc.

To see properties something must be selected.

Element Selection > Ic | 1 2 3 4 5 6 7 8 | X -0.09 Y 0.65 Z 2.47

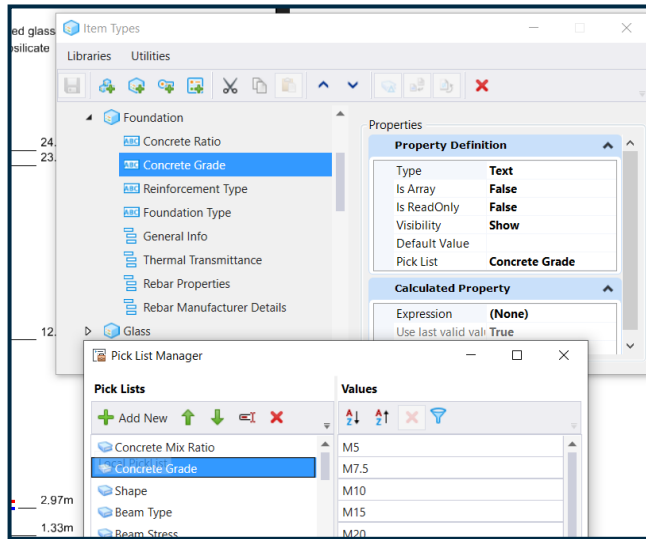
Product Initiative | Advanced Data Reporting

Collaboration

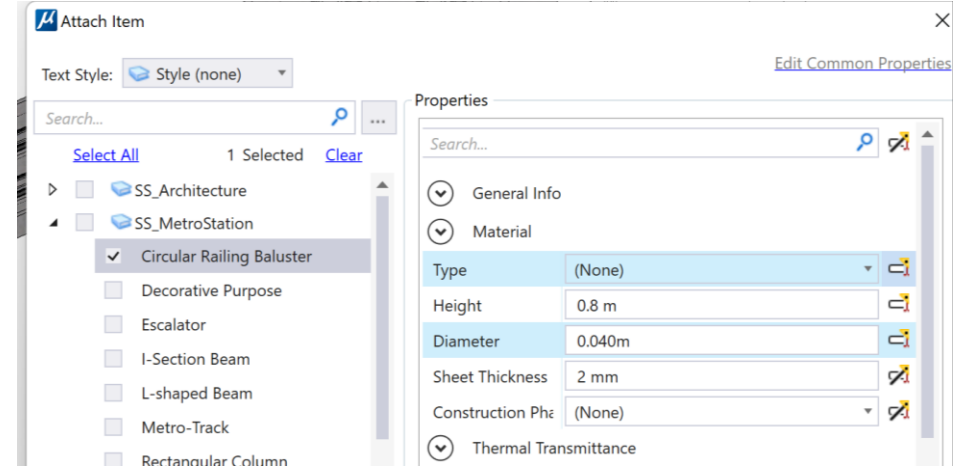
Add intelligence, reduce risk and save time.

- **Problem/Pain** | Certain project tasks can be repetitive and prone to errors
- **For** | Engineers and Architects
- **Value** | Work faster and smarter, adding value to your data

Automatically create Data driven annotations



Better control of tables layout with Table Styles



Conditional picklists Clone Item Types tool Item Types propagation

MetroStation Column Section

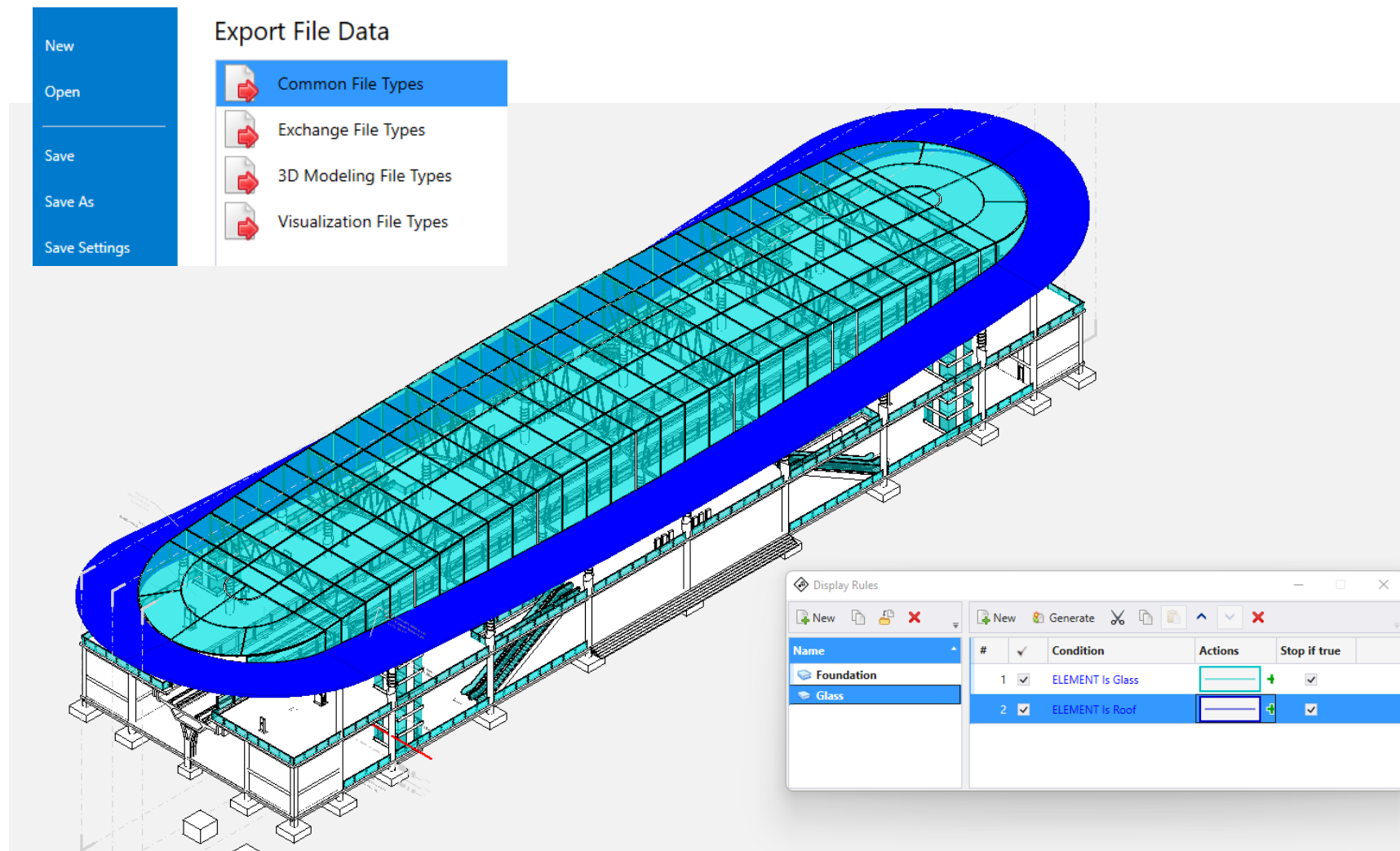
Track Detail Report											
Track No.	Project Name	Track Width of Head	Track Depth of Head	Track Depth of Base	Track Height	Track Material	Track Density	Track Grade	Manufacturer	Track Fishing	Structural Grade
Track 1	MetroStation	0.080m	0.075m	0.042m	0.300m	Stainless Steel	8000.00 kg/m ³	316H	Tony Steel Product PVT.LTM	0.180m	A572
Track 2	MetroStation	0.080m	0.075m	0.042m	0.300m	Stainless Steel	8000.00 kg/m ³	316H	Tony Steel Product PVT.LTM	0.180m	A572
Track 3	MetroStation	0.080m	0.075m	0.042m	0.300m	Stainless Steel	8000.00 kg/m ³	316H	Tony Steel Product PVT.LTM	0.180m	A572
Track 4	MetroStation	0.080m	0.075m	0.042m	0.300m	Stainless Steel	8000.00 kg/m ³	316H	Tony Steel Product PVT.LTM	0.180m	A572

Display Rules Deliverables

Display Rules Deliverables

Display Rules are easier to use and an integral part of deliverables production

- **Problem/Pain** | Levels and layers are limited not flexible and disconnected from information added to designs
- **For** | Engineers and Architects
- **Value** | Change the presentation of your data on the fly using property-based rules and export to DWG



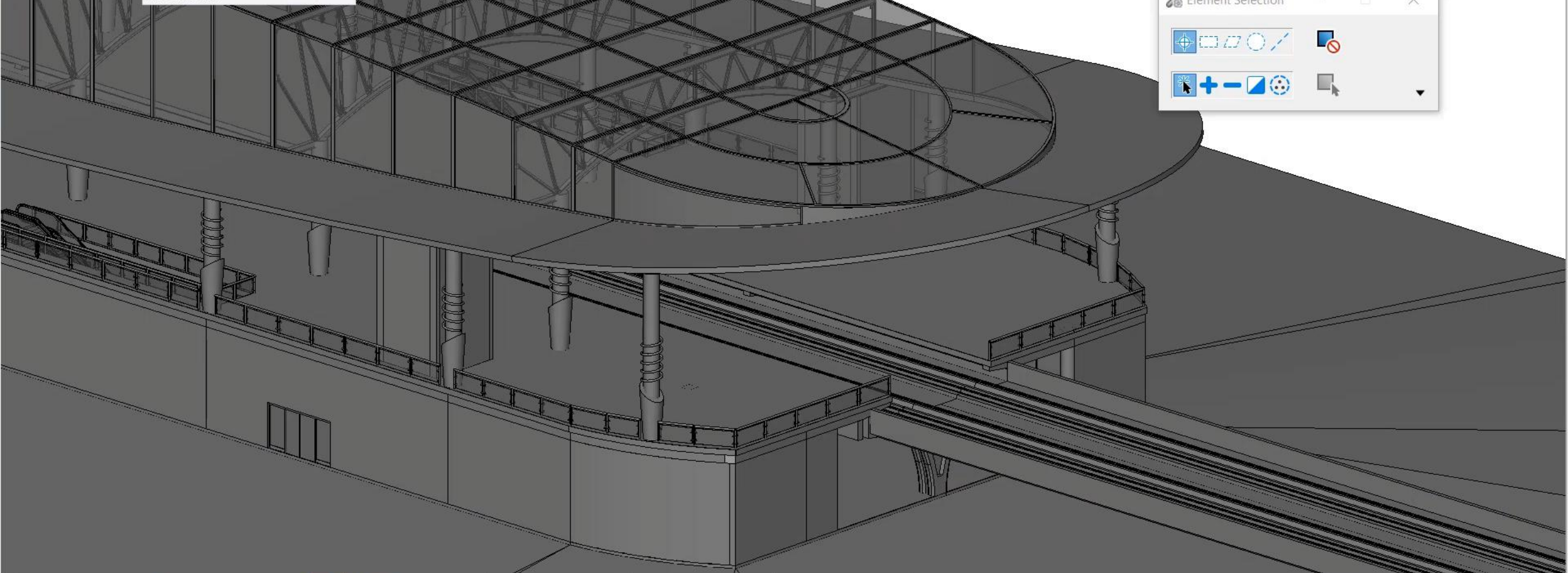
File Home View Curves Solids Surfaces Mesh Content Analyze Constraints Utilities Drawing Aids Collaborate Help

View Attributes Apply Display Style **Apply Display Rule** Window Area Zoom Out Fit View Tools Lens Type Place Camera Camera Place Named Boundary Named Boundaries Clip Volume Clip Create Saved View Update Saved View Settings Apply Saved View Saved Views Cascade View Size Tile Arrange Window Copy View

Prev Next All 1 2 3 4 5 6 7 8 3D Metric Design View Groups

View 1, 3D Metric Design **Apply Display Rule**
(Technology Preview) Apply a display rule to a view

Element Selection



3D Metric Design 1 2 3 4 5 6 7 8 X -14.046 Y 88.084 Z -38.965

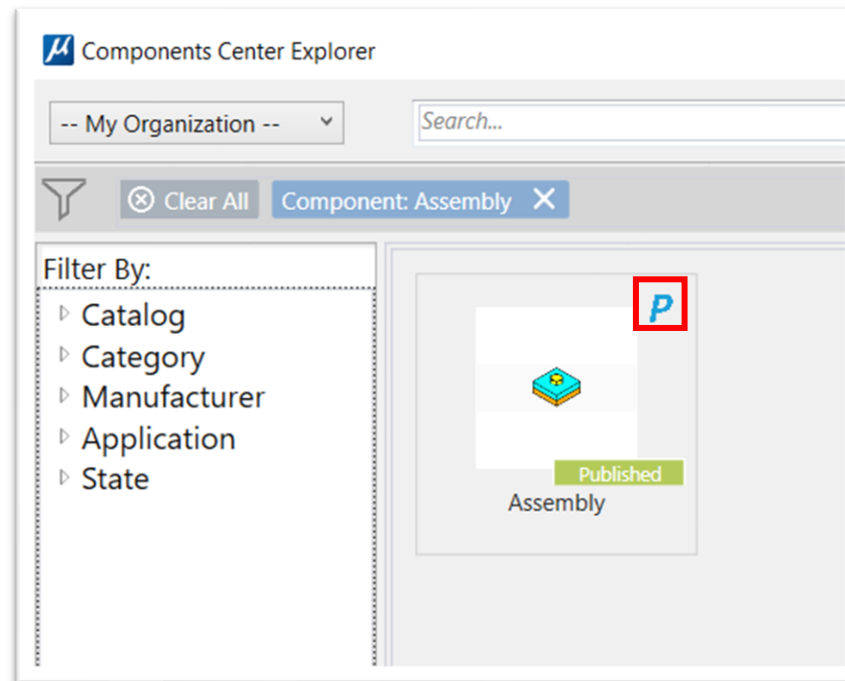
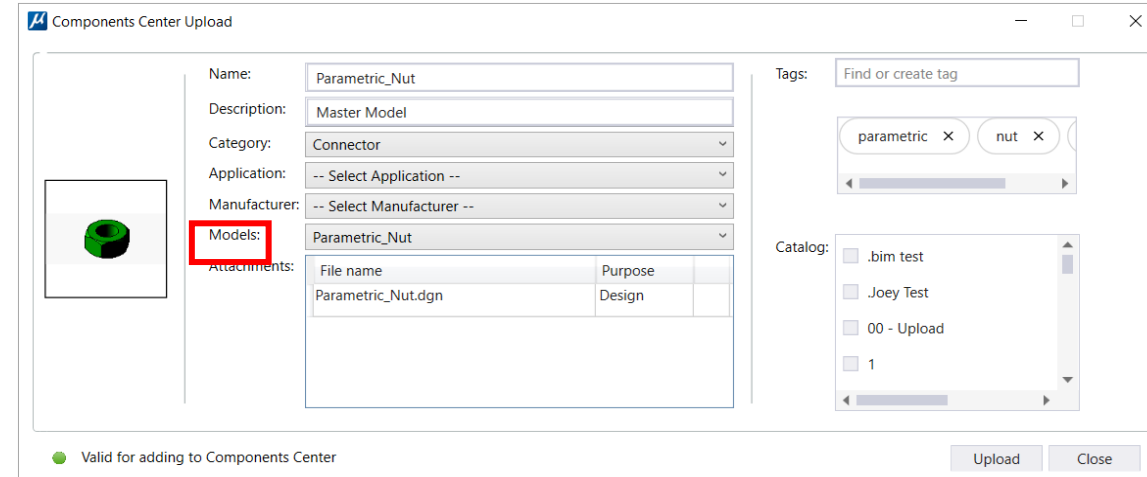
Components Center – 17.1

Component Center Enhancement

Easy to identify Parametric Components

- **Problem/Pain** | Unable to determine what components are Parametrically driven
- **For** | Engineers and Architects
- **Value** | *Easy to identify to save time from searching*

Select a model to upload in the new Models field in the Components Center Upload dialog



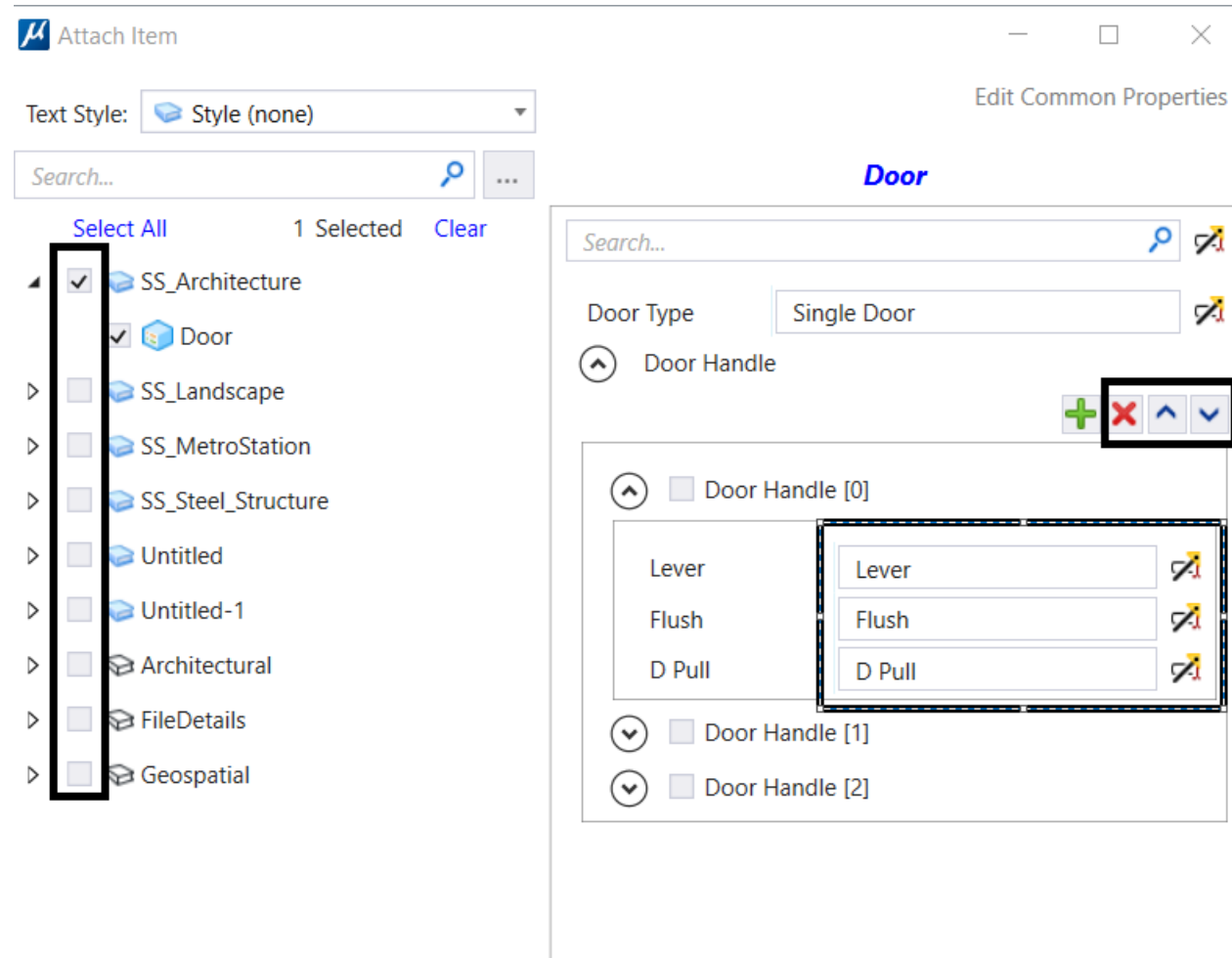
Identify parametric components by a **P** overlaid on their thumbnail previews in the Components Center Explorer dialog

Attach Item Types – UX Improvements 17.1

Item Types

UX Improvements for Attach Item Types Dialog

- **Problem/Pain** | Unable to sort or rearrange components in the Item Types dialog
- **For** | Engineers and Architects
- **Value** | Save Time with multiple selections and moving properties up and down for better sorting

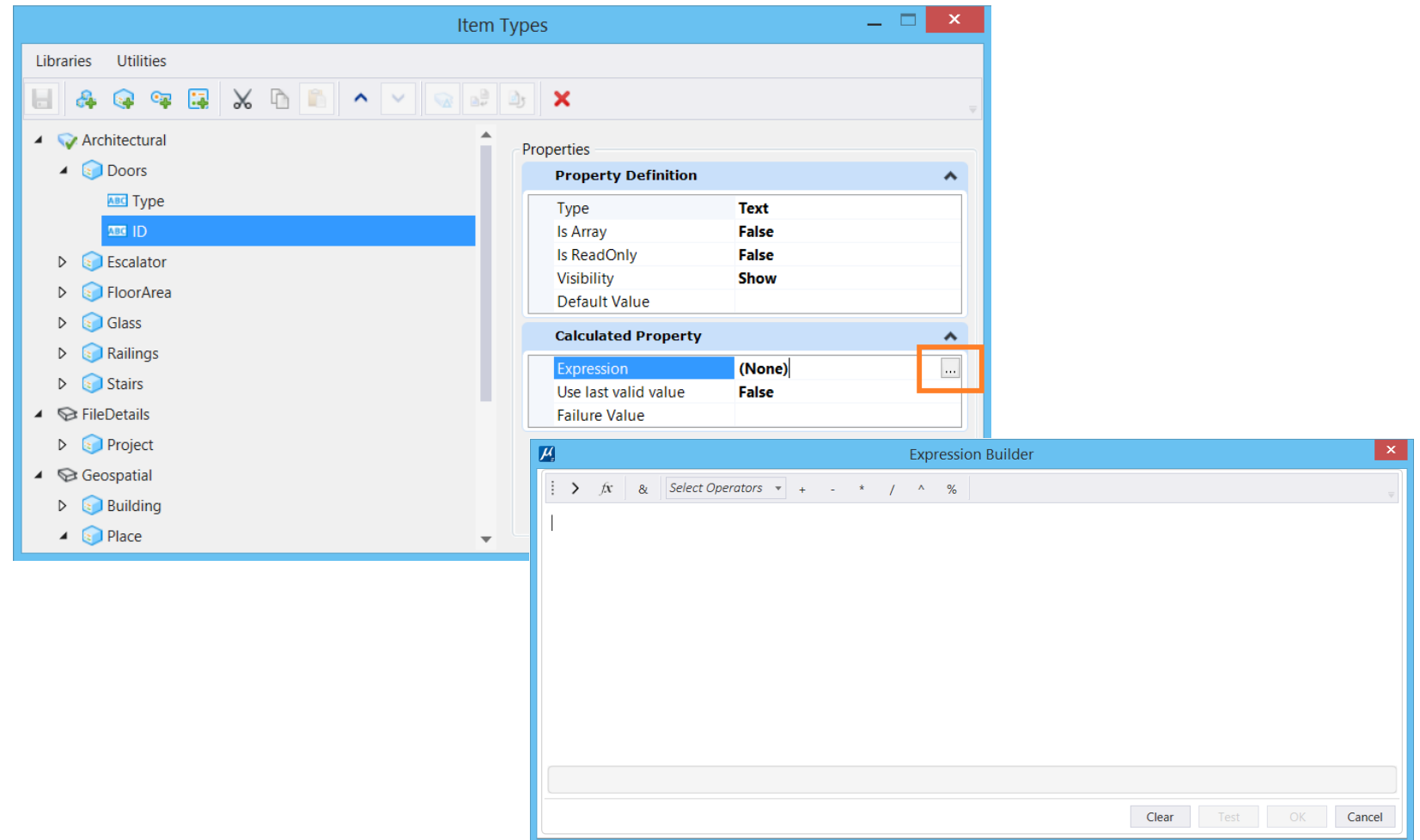


Expressions – ItemType - 17.1

Global Origin for Expressions

Using Expressions – Coordinates are calculated with Global Origin

- *Problem/Pain* | Coordinates were calculated with Respect to Design File Origin, not Global Origin
- *For* | Engineers and Architects
- *Value* | Calculated results with expressions provide alternative information



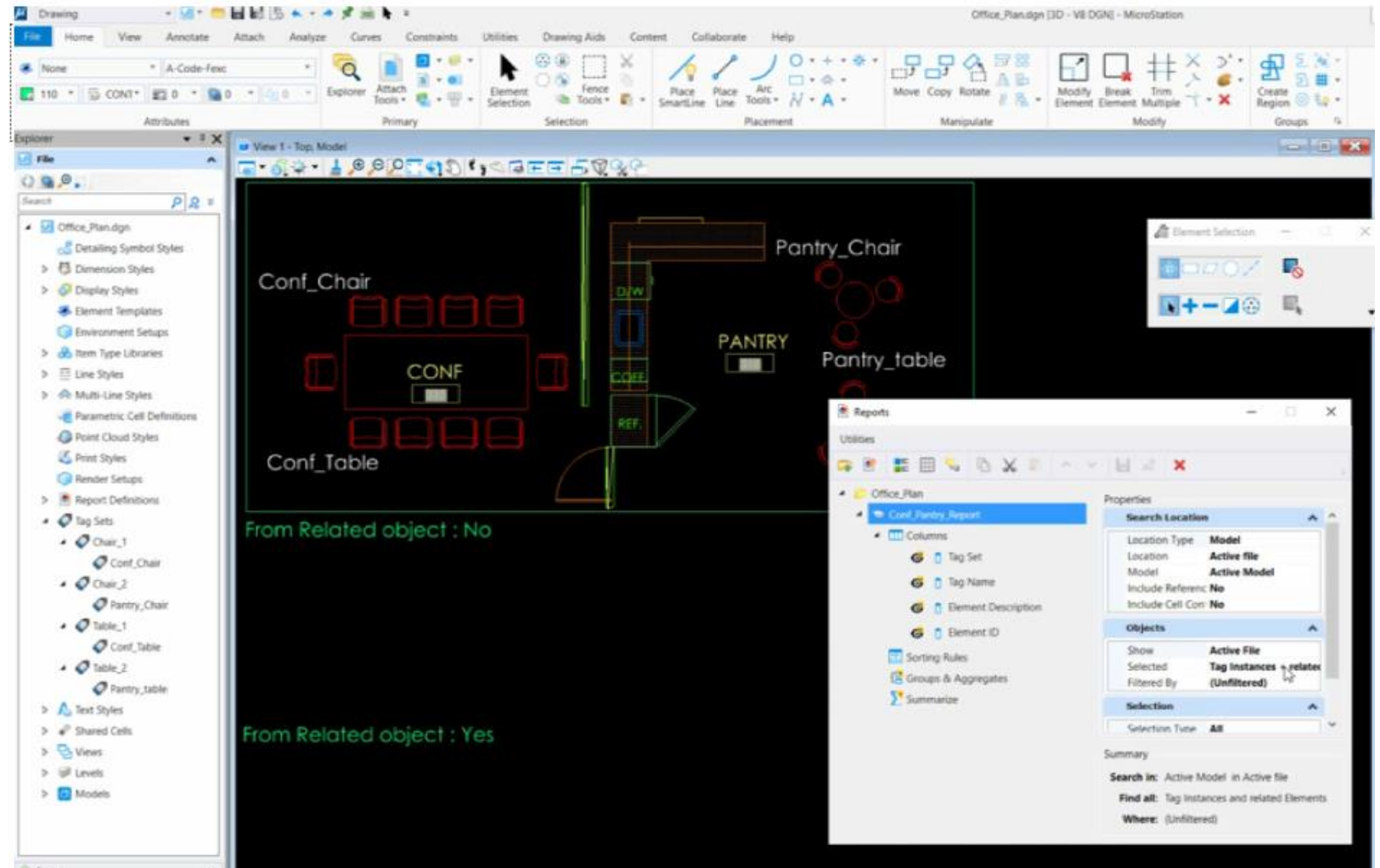
New expressions "**Coordinates.GlobalOrigin.GetX(this.GetElement().Origin)**" will return you the Global Origin converted value for the input point.

Reports- 17.1

Reports/Tables

Bring common properties of two or more related Object Settings.

- *Problem/Pain* | Not a way to report on common properties of related objects
- *For* | Engineers and Architects
- *Value* | Better commonality between properties of similar objects

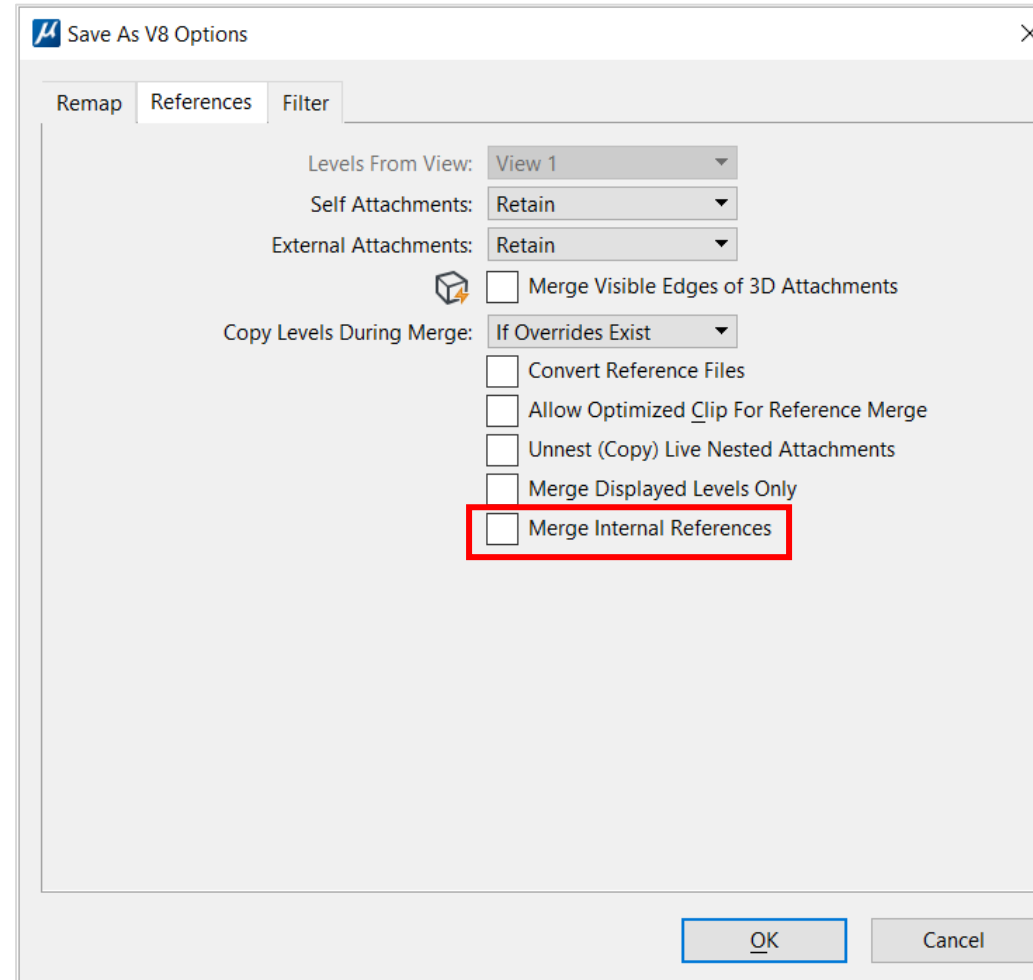


Merge Internal Reference Settings - 17.1

Merge Internal Reference

Non-default models are previously kept as internal references

- **Problem/Pain** | addition references for non-default models
- **For** | Engineers and Architects
- **Value** | *Merge internal references while saving a DGN using the new setting available in the Save As V8 Options Dialog, References Tab*



Explorer

File

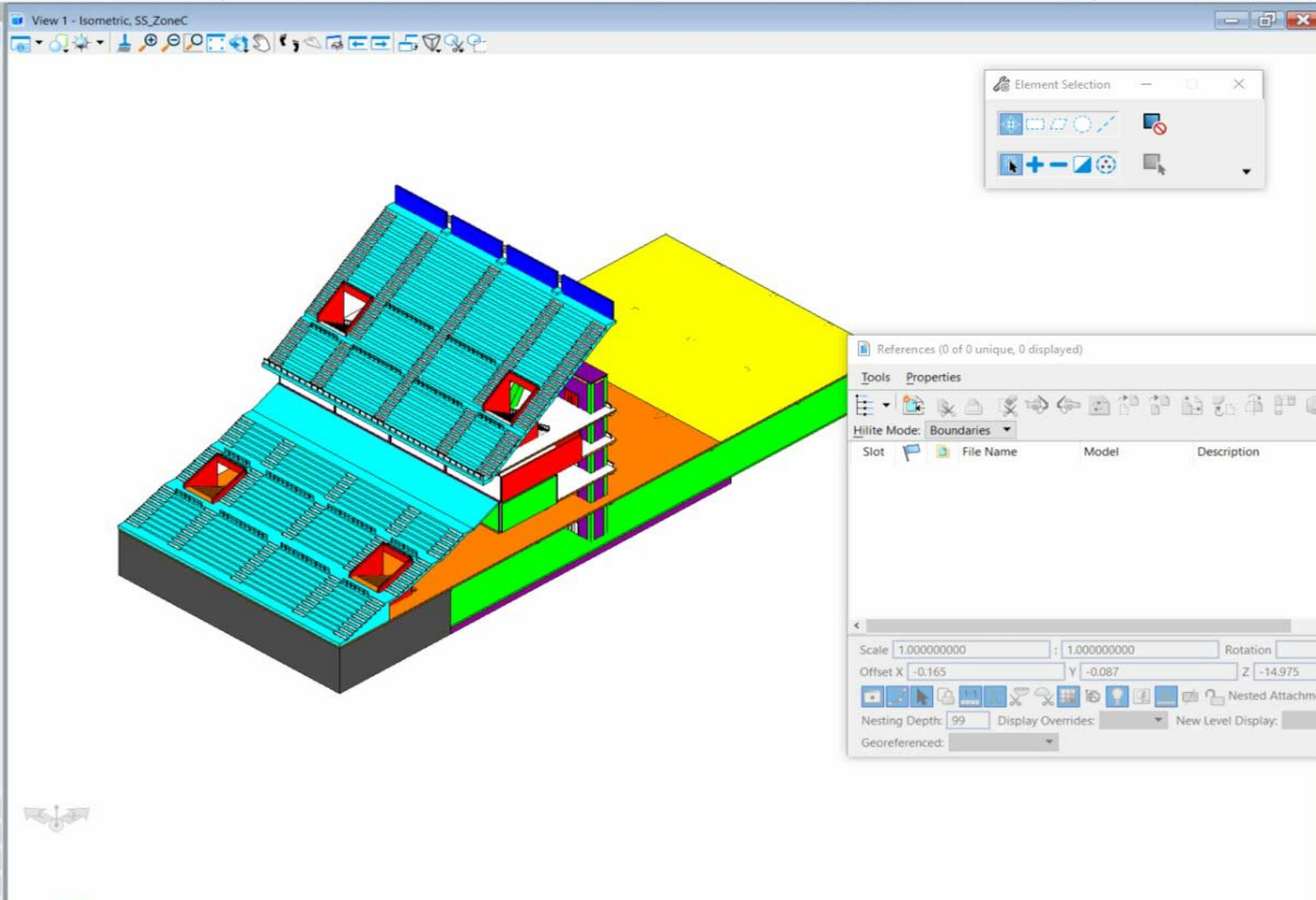
- SS_ZoneC.dgn
- Detailing Symbol Styles
- Dimension Styles
- Display Styles
- Element Templates
- Environment Setups
- Item Type Libraries
- Line Styles
- Multi-Line Styles
- Parametric Cell Definitions
- Point Cloud Styles
- Print Styles
- Render Setups
- Report Definitions
- Tag Sets
- Text Styles
- Shared Cells
- Views
- Levels
- Models

Items

Resources

Sheet Index

Links



Models

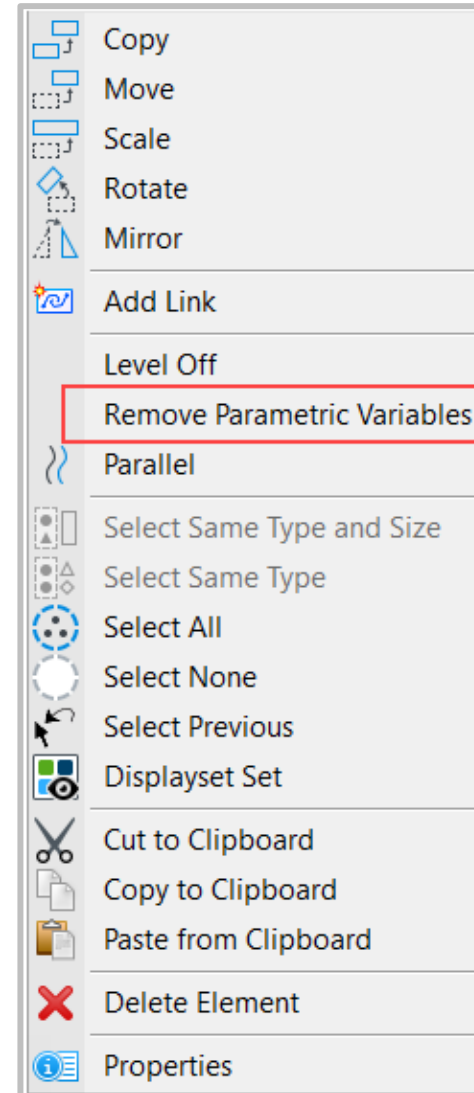
Type	2D/3D	Name	Description
[Icon]	[Icon]	SS_ZoneC	Master Model
[Icon]	[Icon]	SS_ZoneC_Sheet	

Remove Variable from Blocks - 17.1

Remove Parametric Variables

Remove variables from the Parametric Components

- **Problem/Pain** | Time lost removing parametric components from a block that has been placed
- **For** | Engineers and Architects
- **Value** | *Save time with a couple of clicks.*



File Home View Curves Solids Surfaces Mesh Content Analyze Constraints Utilities Drawing Aids Collaborate Help

Attributes: None, Default, 2, 0, 1, 0, 0

Primary: Explorer, Attach Tools

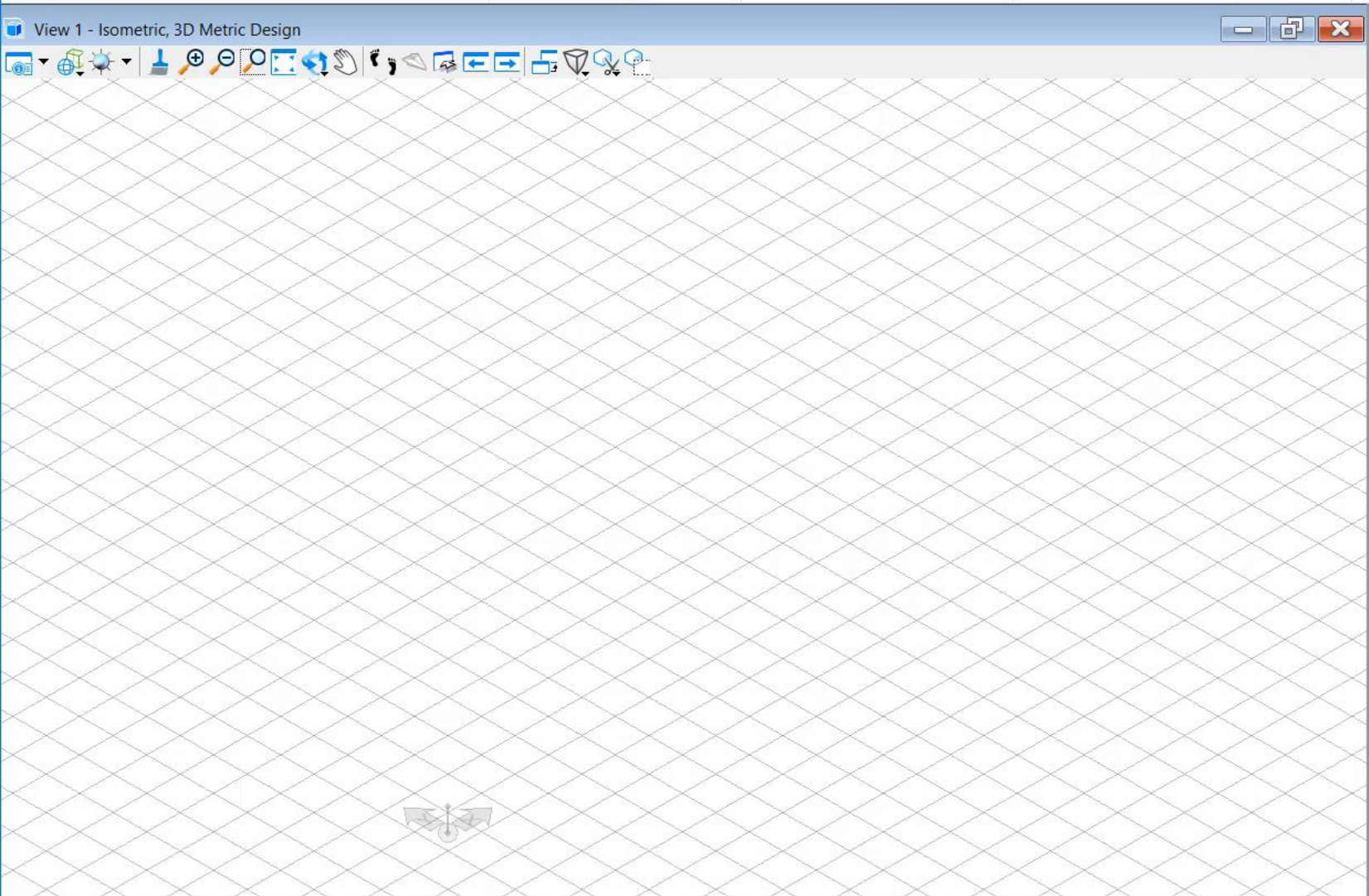
Selection: Element Selection, Fence Tools

Placement: Slab, Sphere, Cylinder, Solid By Profile

Manipulate: Move, Copy, Rotate

Modify: Modify Solid, Features, Boolean Tools

Groups: Create Region



Element Selection Properties

Method: Orthogonal

Edge 1: 14.000 (x)

Edge 2: 14.000 (x)

Area: Solid

Fill Type: None

Fill Color: 2

To see properties something must be selected.

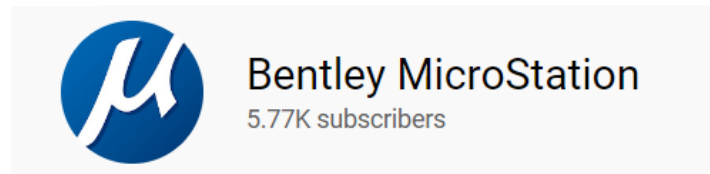
Summarizing video



Link



- https://communities.bentley.com/products/microstation/b/microstation_blog



- <https://www.youtube.com/c/BentleyMicroStation/playlists>

Coffee Corners

- Event Page
- Sigs



Webcasts

Select one or more of the following webcasts and complete registration. Click any webcast listing to view its details.

- Select All
- Coffee Corner: MicroStation – MicroStation in collaboration with iTwin Services**
Thursday, December 15, 2022, 11:00 AM EST
- Coffee Corner: MicroStation – All about the benefits of the DGN file format**

Overview

Title: Coffee Corner: MicroStation – MicroStation in collaboration with iTwin Services

Date: Thursday, December 15, 2022

Time: 11:00 AM Eastern Standard Time

Duration: 1 hour

Summary

Ideas



<https://microstation.ideas.aha.io/>

[Add a new idea](#) Recent **Trending** Popular

FILTER BY STATUS

Needs review	582
Future consideration	84
Already exists	33
Planned	54
Will not implement	91
Shipped	44

FILTER BY CATEGORY

2D Drawing ?	145
3D Modeling ?	96
Collaboration ?	191
General ?	358
Visualization ?	45

[Log in / Sign up](#)

10
VOTE

Repair function for upf (User Profile)

The User Profile File is damaged with many installations "regularly". This causes random effects and issues. And is often leading to lengthy discussions in the forum and probably Service Tickets. It would be good to have a tool to check the upf...

Created 09 May 07:11 by Gerd Eisenacher
General

Future consideration 2

170
VOTE

PDF Converter

Can we please have PDF import to object like lines, fill shapes, arc, text?This way we don't depend on third-party software.

Created 27 Jan 17:39 by Guest
Collaboration

Planned 7

15
VOTE

Property Panel - Property Expression Extraction

Mstn has put a lot of effort into schemas that allow the user to access all kinds properties displayed in the Properties Panel. The Properties Panel is also used to drill down into nested elements. It would be great to allow the user to extract th...

Created 31 Mar 07:42 by Dominic Seah
General

Needs review 1

A green ribbon graphic with a 3D effect, featuring a dark green shadow on the left side. The ribbon is horizontal and contains the text "Thank you for your attention!".

Thank you for your
attention!