



Enable Reality Modeling with Cloud Services

November 2017

Presenter: Jerard Marsh

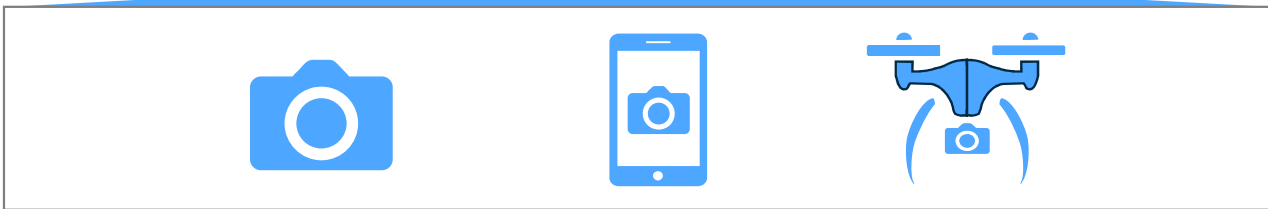
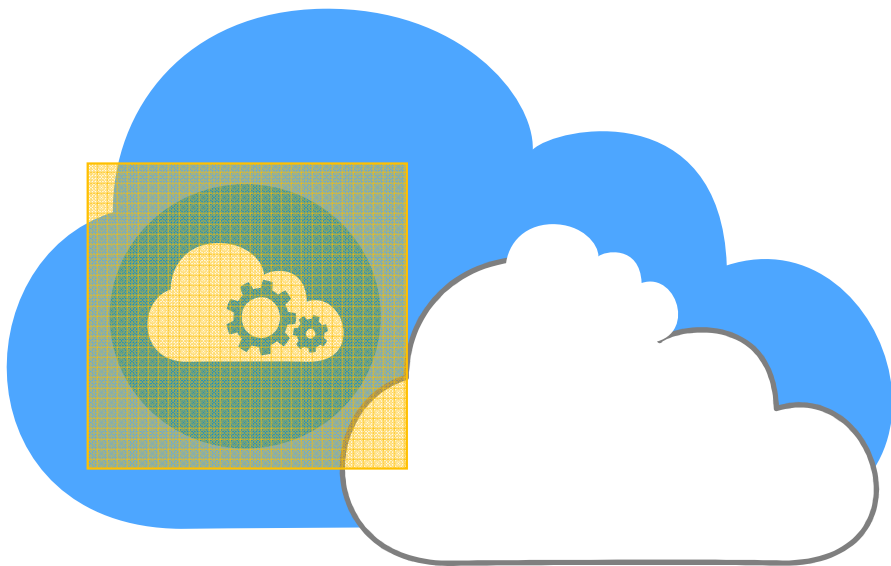
Reality Modeling Cloud Services



ContextCapture Cloud processing service



Projectwise ContextShare



ContextCapture cloud processing service

What is ContextCapture cloud processing service

- A cloud base 3D Reality Modeling solution allowing organizations to process images and point clouds to create a number of deliverables including Reality Meshes, orthophotos, digital surface models and point clouds



Securely upload photos and point clouds



Simply configure your processing task using the console application



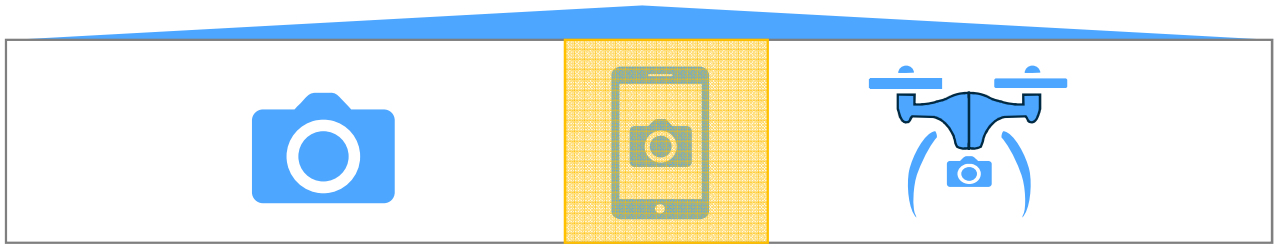
Process the data in the cloud



Save and share data using ProjectWise ContextShare

Why ContextCapture Cloud

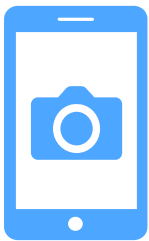
- Make Reality Modeling and ContextCapture more accessible to more people
- Simpler processing workflow
- Does not require purchasing expensive hardware
- Pay per use model
- Scalable multi-engines processing



ContextCapture mobile application

What is ContextCapture mobile application

- A new iOS and Android mobile application



Take photos on
smartphone or tablet



Process in the cloud
with CCCS



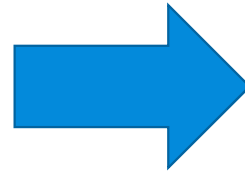
Display resulting 3D
mesh on your device



Save and share data
in Projectwise
ContextShare



Email model link to
your collaborators



Reality modeling
acquisition device

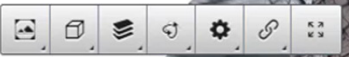


Capturing a reality mesh using the ContextCapture mobile application.
Image courtesy of Bentley Systems

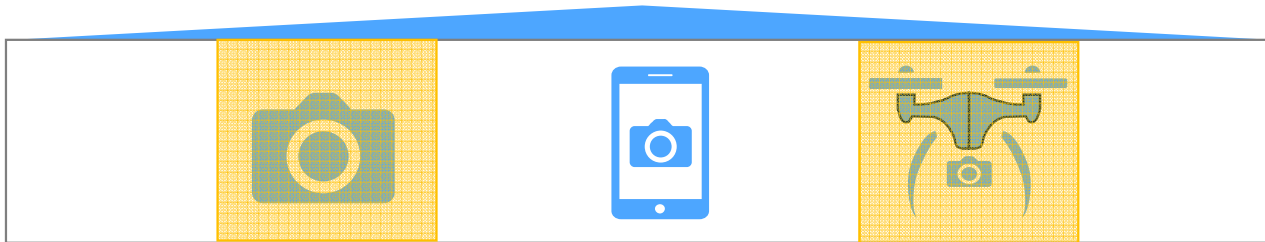
Why ContextCapture Mobile

- Allow anyone to quickly capture reality model
- Allow to share directly the models with collaborators
- Allow to better document as-is situations

More than 110 models created so far !



DEMO

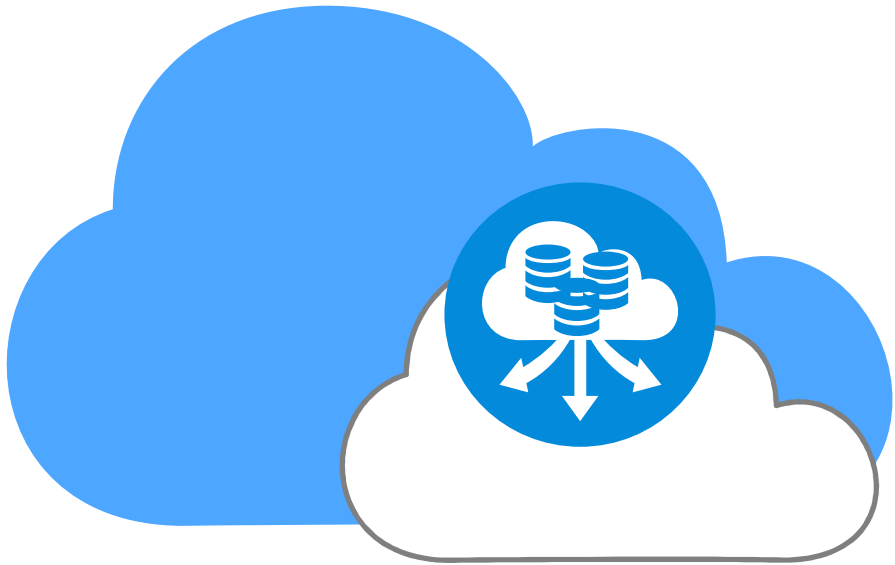


ContextCapture console application

What is ContextCapture console application

- A new ContextCapture desktop application for beginners
- It allows to:
 - Create new cloud processing project
 - Upload photos and point cloud
 - Define ContextCapture settings (e.g.: ground control points)
 - Process those using ContextCapture cloud processing service
 - Store the resulting Reality Mesh inside ProjectWise ContextShare
 - Email the resulting model link to your collaborators

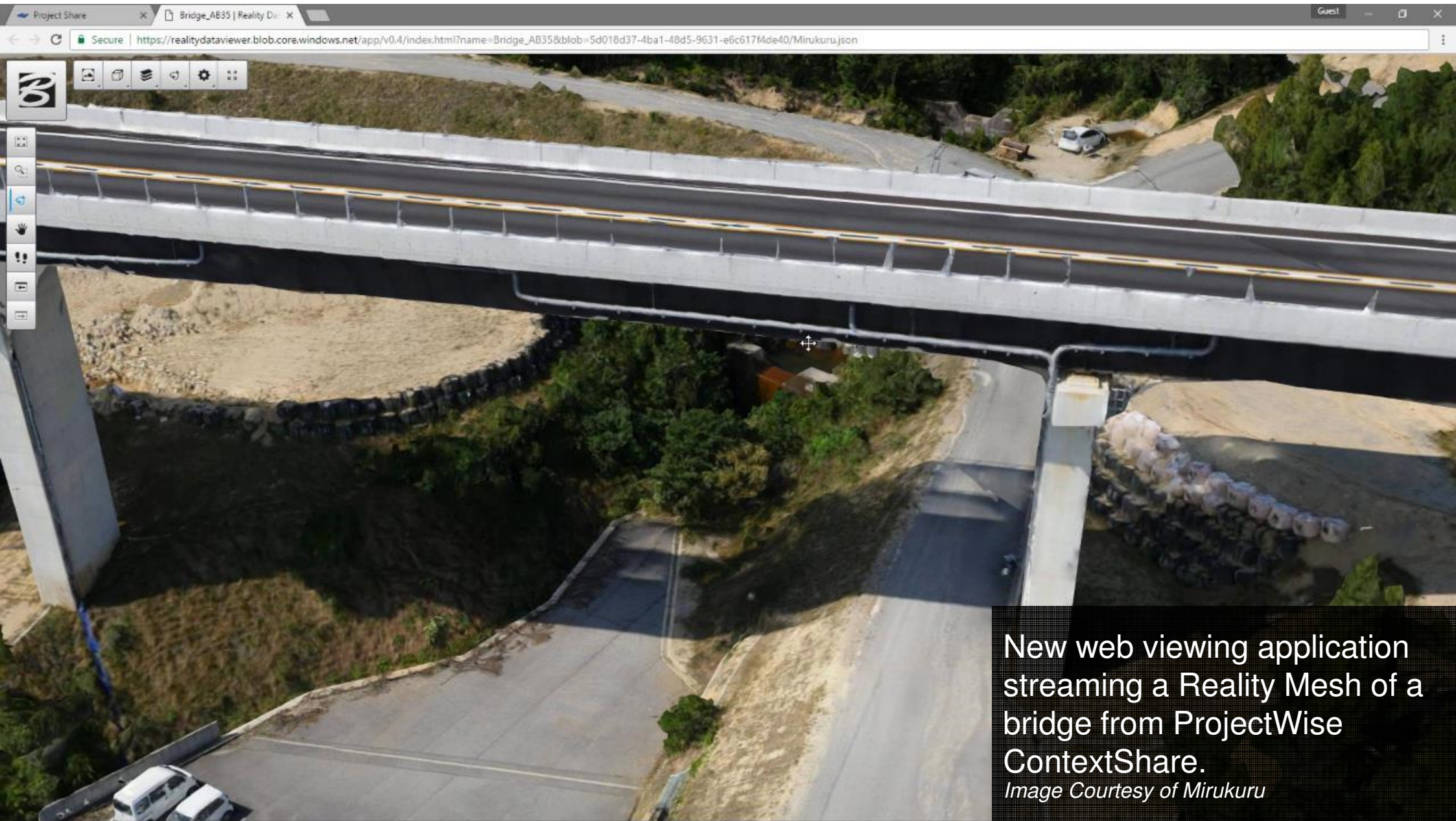




**ProjectWise
ContextShare**

What is ProjectWise ContextShare

- A cloud base solution allowing organizations to manage extremely large quantities of Reality Modeling data including Reality Mesh, Point Cloud and Images
- It allows to:
 - Securely manage your reality data (upload, rename, delete...)
 - Control access to the Reality Modeling data
 - Make data accessible to internal and external users through the CONNECT project
 - Easily search, download or stream this same data from a number of different clients.



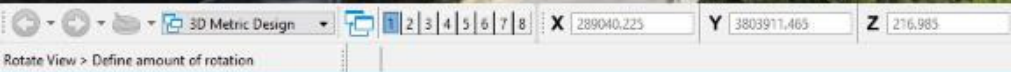
New web viewing application streaming a Reality Mesh of a bridge from ProjectWise ContextShare.

Image Courtesy of Mirukuru



New MicroStation CONNECT streaming a Reality Mesh of a bridge from ProjectWise ContextShare.

Image Courtesy of Mirukuru



Rotate View > Define amount of rotation

Why ProjectWise Contextshare

- Infrastructure engineering consultants and owners have to manage and share an increasing large amount of Reality Modeling data
- Many organizations don't currently have the required IT infrastructure to manage this type of data
- The hardware to manage that much data is expensive and quickly becomes obsolete

Reality Modeling 3SM - ContextShare.dgn [3D - V8 DGN] - ContextCapture Editor

File Home View Attach Analyze Retouch Extract Deliver

None Default

Attributes Primary View Selection Placement

Reality Model Presentation Section Tools Attach Tools

Fit View Window Area

Element Selection

Solid By Profile

Move Cop

View 1 - Isometric, 3D Metric Design

View 2 - Top, 3D Metric Design

View 3 - Front, 3D Metric Design

1 2 3 4 5 6 7 8 X 19.298 Y 4.090 Z 7.106

Element Selection > Identify element to add to set

Default

Bentley CONNECT Advisor

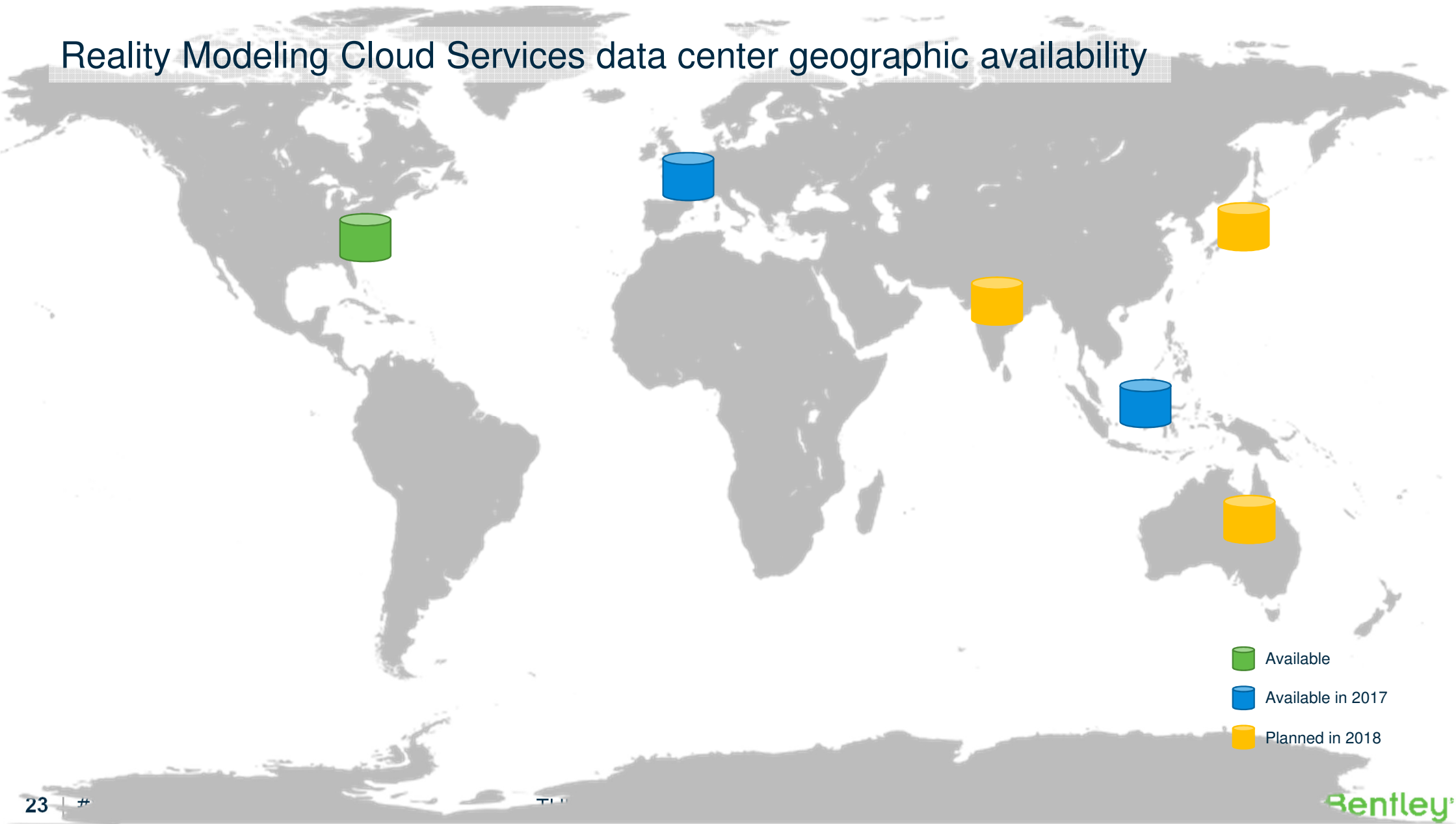
Search

Most Recent

Unable to find relevant content.

0 items

Reality Modeling Cloud Services data center geographic availability



Reality Modeling Cloud Services Business Model

- Organization pre-purchase a bucket of units
 - Image processing units (roughly 1 GigaPixel)
 - Point cloud processing units (roughly 1 million points)
 - Storage units (1GB)
- Minimum amount
 - 48 image processing units
 - 150 point cloud processing units
 - 150 storage units
- Maximum amount -> unlimited

