



OpenRoads



OpenBridge



OpenSite

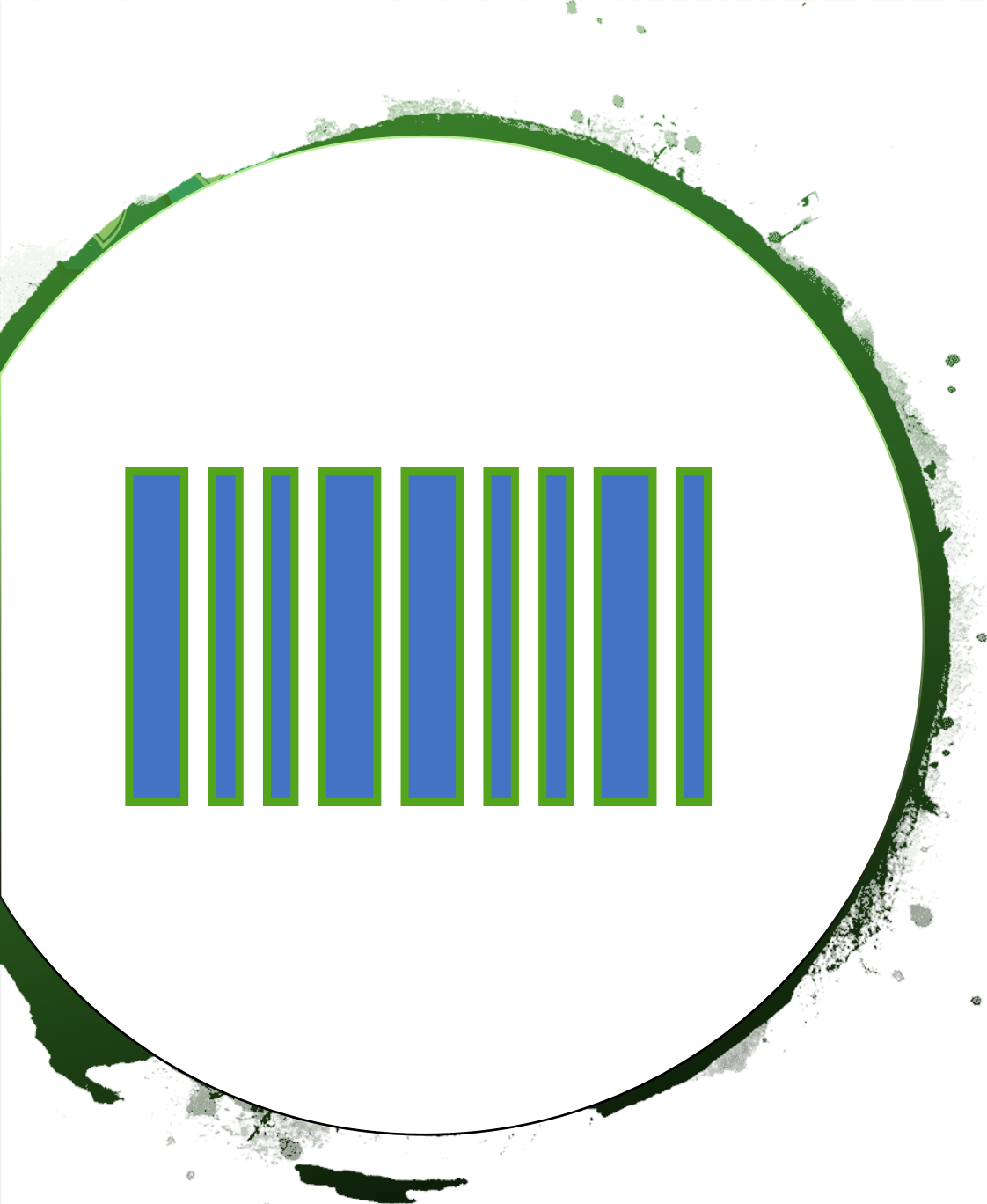


OpenRail



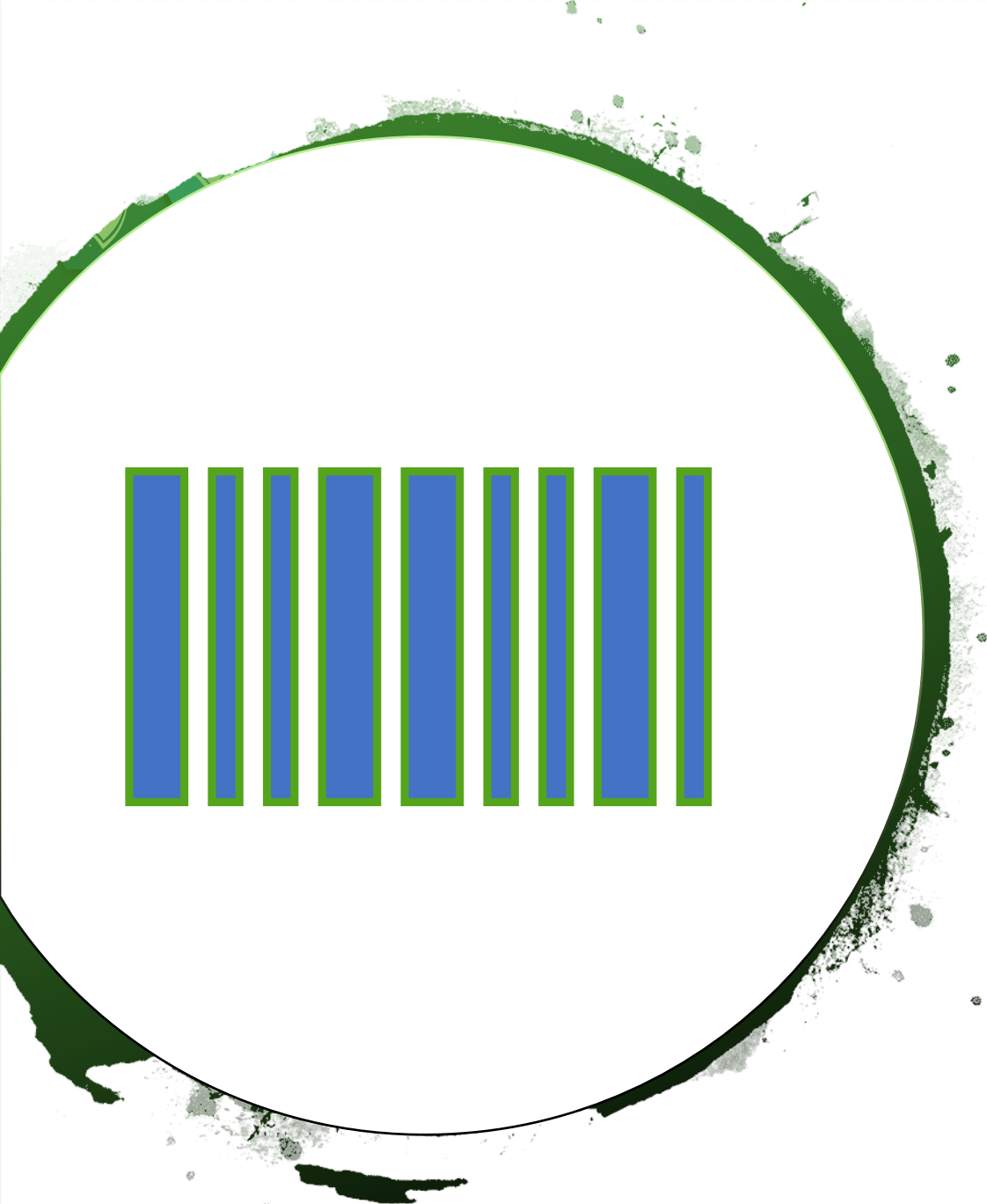
# What's New in Drainage and Utilities 2022 R 1

Hosted by Ian Rosam and Presented by: Jonathan Smith



For a complete list of product versions, enhancements and compatibility requirements, please refer to the ***OpenRoads Designer 2022 R 1 Readme*** at the following link:

<https://docs.bentley.com/LiveContent/>



## **Note:**

***This release is considered a “Major” version in that data created with 2022 R 1 will need to be downgraded in order to be opened with a previous release.***

# OpenRoads Designer 2022 Release 1

Drainage and Utilities

*Computes the volume of a pond  
at a certain elevation or  
incremental pond volumes*

# Compute Pond Volumes

The screenshot displays the Bentley Civil Report Browser interface. On the left, a file tree shows the 'Evaluation' folder expanded, with 'PondVolume.xml' selected. The main window shows the 'Compute Pond Volumes' report. A 'Parameters' dialog box is open, showing the following settings:

- Terrain: [Dropdown]
- Method: Incremental
- Maximum Water Elevation: 605.000
- Minimum Water Elevation: 565.000
- Increment: 10.000
- Elevation Lock:

The report title is 'Pond Volume' and it was created on Wednesday, April 27, 2022, at 10:19:17 AM. The report parameters are:

- Terrain Name: Pond
- Method: Incremental
- Minimum Elevation: 565.000
- Maximum Elevation: 605.000
- Elevation Increment: 10.000
- Elevation Lock: True

Elevation	Incremental Volume	Cumulative Volume	Acre Feet	Surface Area
565.000	0.000	0.000	0.000	0.000
574.146	66633.626	66633.626	1.530	16440.199
583.988	562745.221	629378.846	14.449	87364.796
593.831	1241626.288	1871005.134	42.952	166359.060
603.673	2088126.955	3959132.089	90.889	261505.601
605.000	356223.439	4315355.528	99.067	275505.043

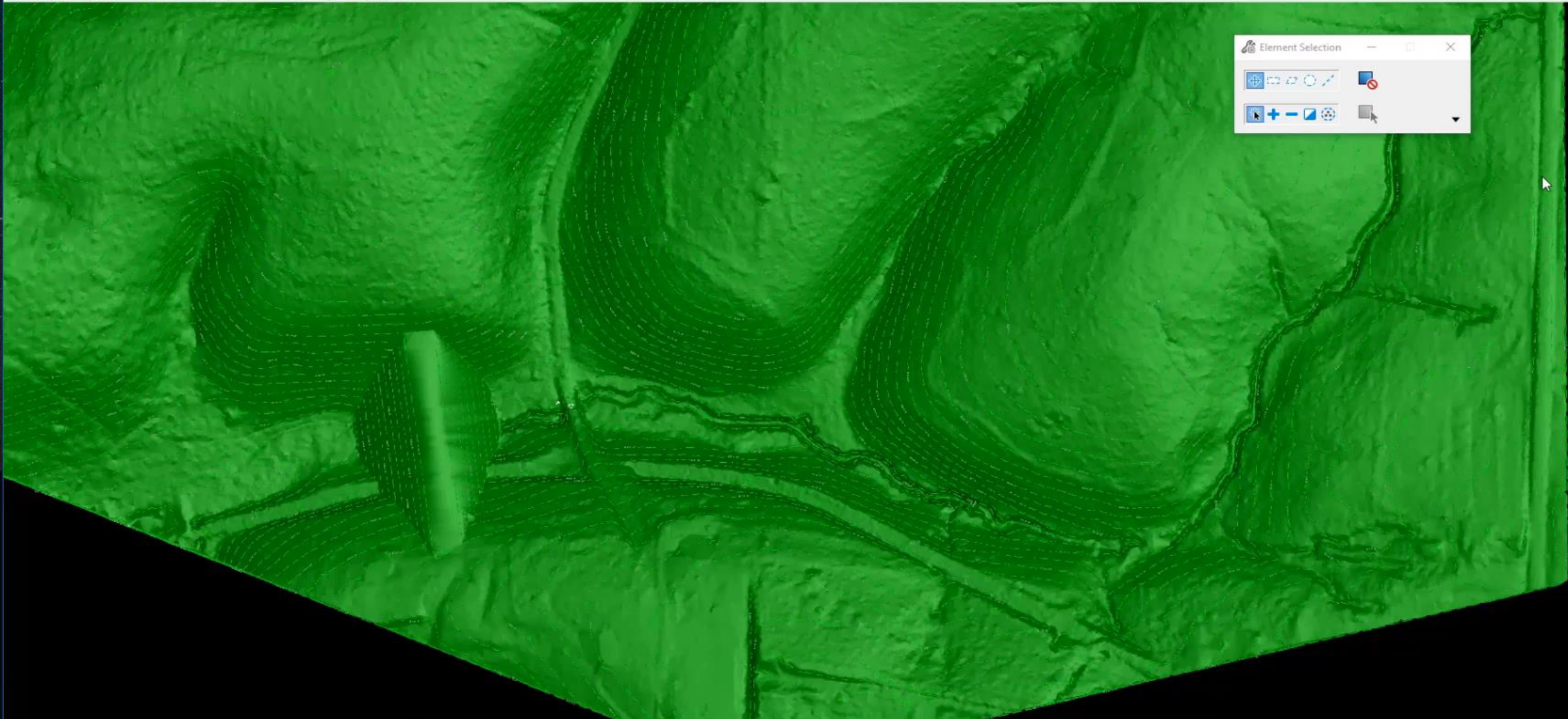


File Home Terrain Geometry Site Corridors Model Detailing Drawing Production Drawing Utilities Collaborate View Help

Primary Selection Create Edit Analysis Miscellaneous Labeling

- From File
- From Graphical Filter
- From Elements
- Additional Methods
- Topo Import
- Active
- Add Features
- Remove Features
- Change Feature Type
- Edit Model
- Edit Complex Model
- Boundary Options
- Transform
- Points
- Calculate Area
- Volumes
- Hydraulic
- Reporting
- Aquaplaning
- Sight Visibility
- Export To File
- Label Terrain Contours
- Label Terrain Spots

View 1 - Top, Default-3D

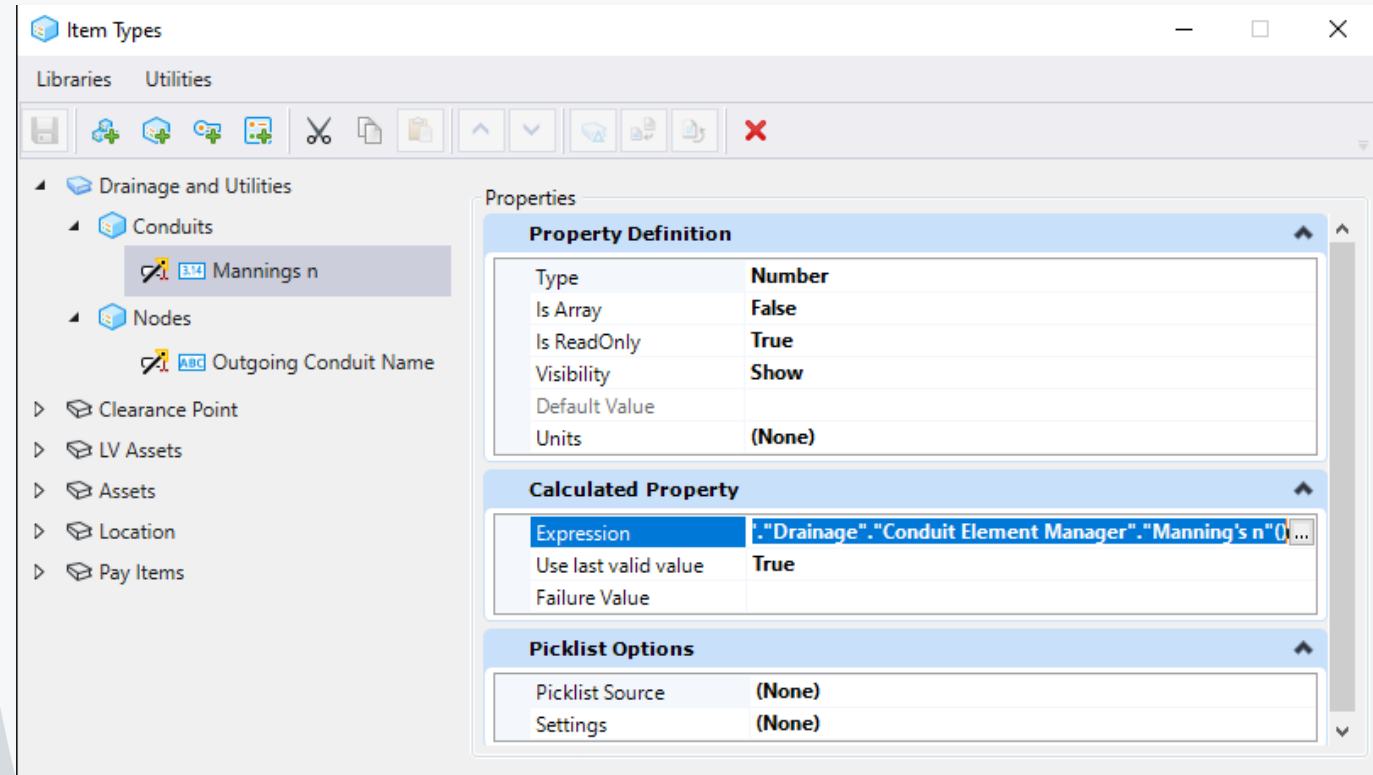


Element Selection

- Selection tools: pan, zoom, rotate, move, delete, copy, paste, undo, redo, refresh, help.

# Support for Item Types in D&U feature definitions, and Single Source of Truth

## Item Types



Item Types

Libraries Utilities

Drainage and Utilities

- Conduits
  - Mannings n
- Nodes
  - Outgoing Conduit Name
- Clearance Point
- LV Assets
- Assets
- Location
- Pay Items

Properties

**Property Definition**

Type	Number
Is Array	False
Is ReadOnly	True
Visibility	Show
Default Value	
Units	(None)

**Calculated Property**

Expression	["Drainage"."Conduit Element Manager"."Manning's n"]
Use last valid value	True
Failure Value	

**Picklist Options**

Picklist Source	(None)
Settings	(None)

File Home Layout Analysis Components Utilities View Tools Report Drawing Production Drawing Utilities Collaborate View Help

Primary Selection Geographic Item Types Reports

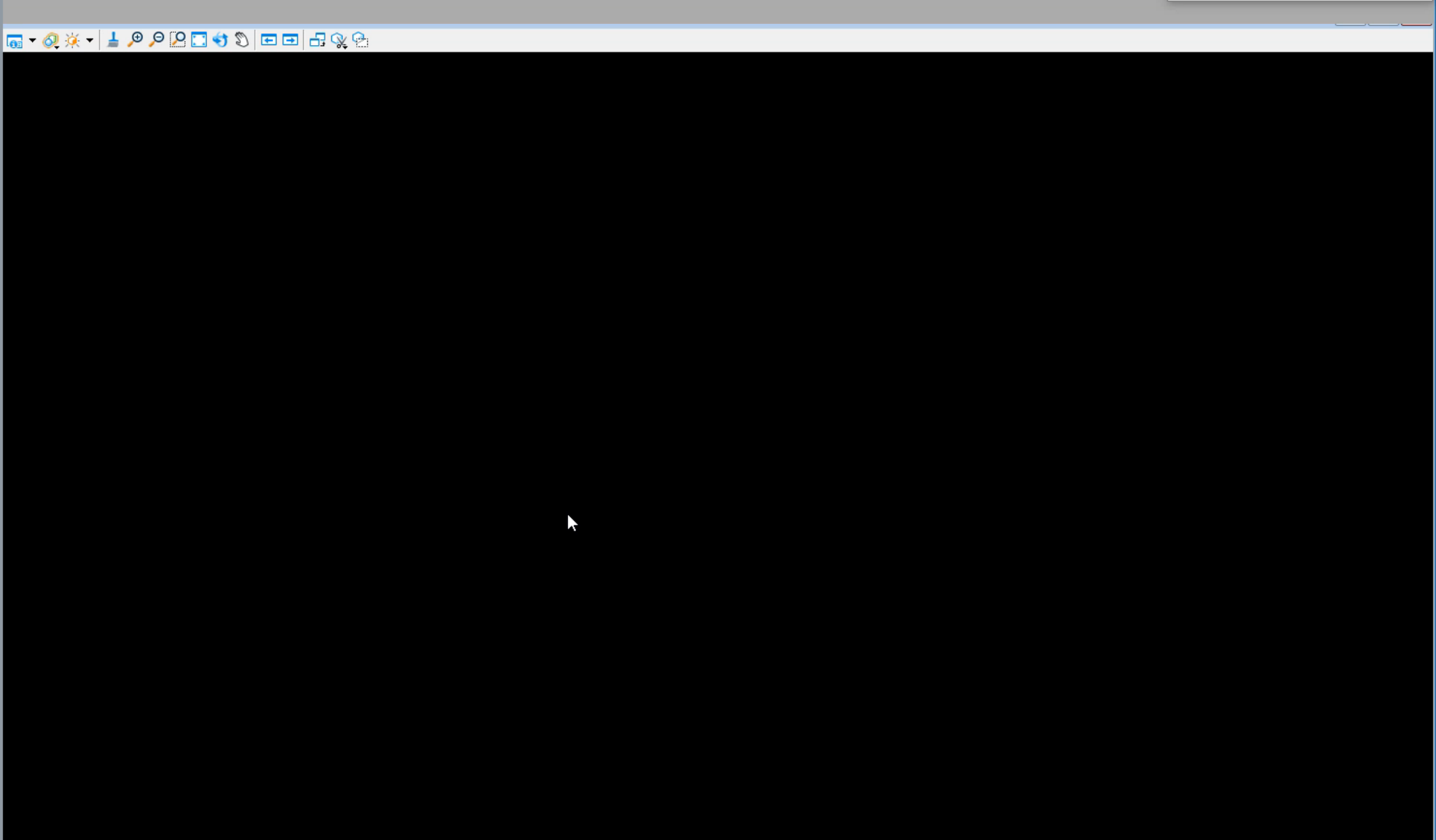
Element Selection Coordinate System Asset Manager Attach Item Detach Item Picklist Import/Export Reports

Search Ribbon (F4)

Element Selection

Explorer

- File
- Items
- Resources
- OpenRail Model
- Sheet Index
- Links
- OpenRail Standards**
  - Standards
    - Libraries
    - Drainage and Utilities Features Annotations Item Types Imperi
      - Feature Definitions
        - Alignment
        - Terrain
        - Corridor
        - Superelevation
        - Linear Template
        - Surface Template
        - Linear
          - Point
          - Mesh
          - Survey
        - Rail
        - Site
        - Analysis
        - Drainage and Utilities
          - Conduit
            - CommunicationsSegment
            - ElectricalSegment
            - GasSegment

- Drainage and Utilities Model
- Survey




# Conduit Symbology

*Show the inner and outer walls for a conduit in plan and profile models.*

*Better control of HGL and EGL symbology in profile.*

*Multiple HGL's on a profile.*

Previous versions

Symbology	
Linear Feature Symbology	Storm Water (Concrete)
Profile Feature Symbology	Storm Water
Solid Feature Symbology	Storm Water (Concrete)



2022 Release 1

Symbology	
Center Feature Symbology	Storm Water (Concrete)
Outer Element Template	Storm Water\Conduits\Pipes\Plan\Storm Water
Inner Element Template	Storm Water\Conduits\Pipes\Plan\Storm Water
Outer Profile Element Template	Storm Water\Conduits\Pipes\Profile\Storm Water
Inner Profile Element Template	Storm Water\Conduits\Pipes\Profile\Storm Water
Profile Feature Symbology	Storm Water
Solid Feature Symbology	Storm Water (Concrete)

HGL/EGL Display Settings	
Display HGL	True
HGL Element Template	Storm Water\Conduits\Hydraulic Grade Line
Display EGL	False
EGL Element Template	Storm Water\Conduits\Energy Grade Line

File Home Layout Analysis Components Utilities View Tools Report Drawing Production Drawing Utilities Collaborate View Help

Primary Selection

Element Selection

Scenarios

Alternatives

Options

Validate

Calculate Summary

Notifications

Compute

Engineering Standards

Compute Center

Design Constraints

Default

Flex Tables

Selection Sets

Queries

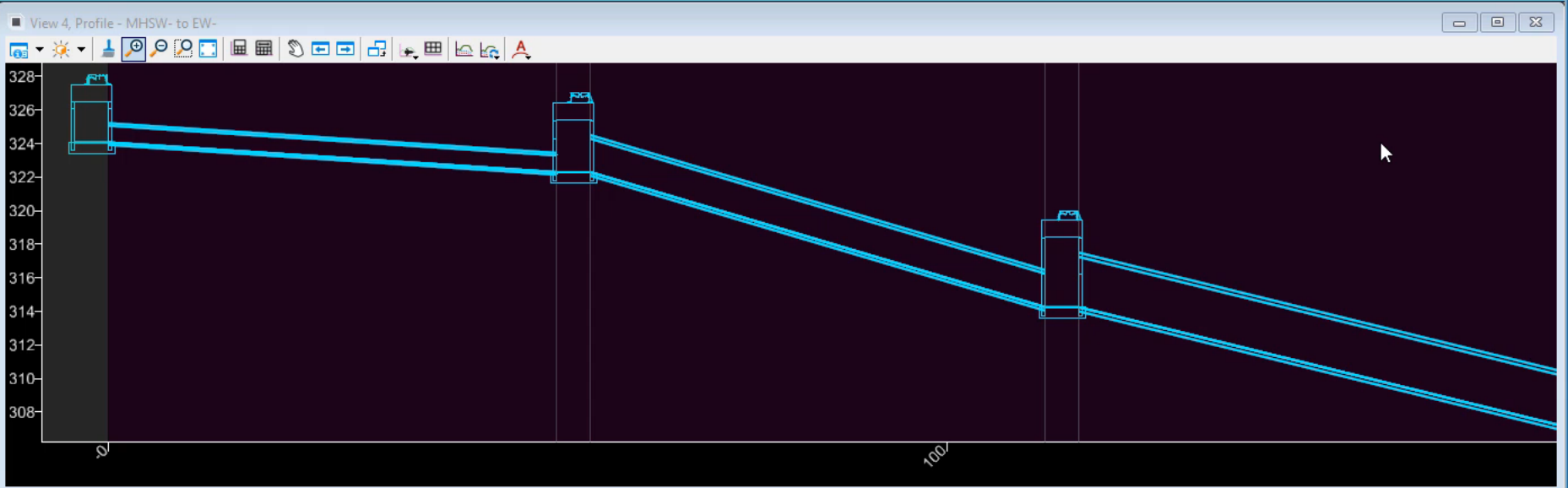
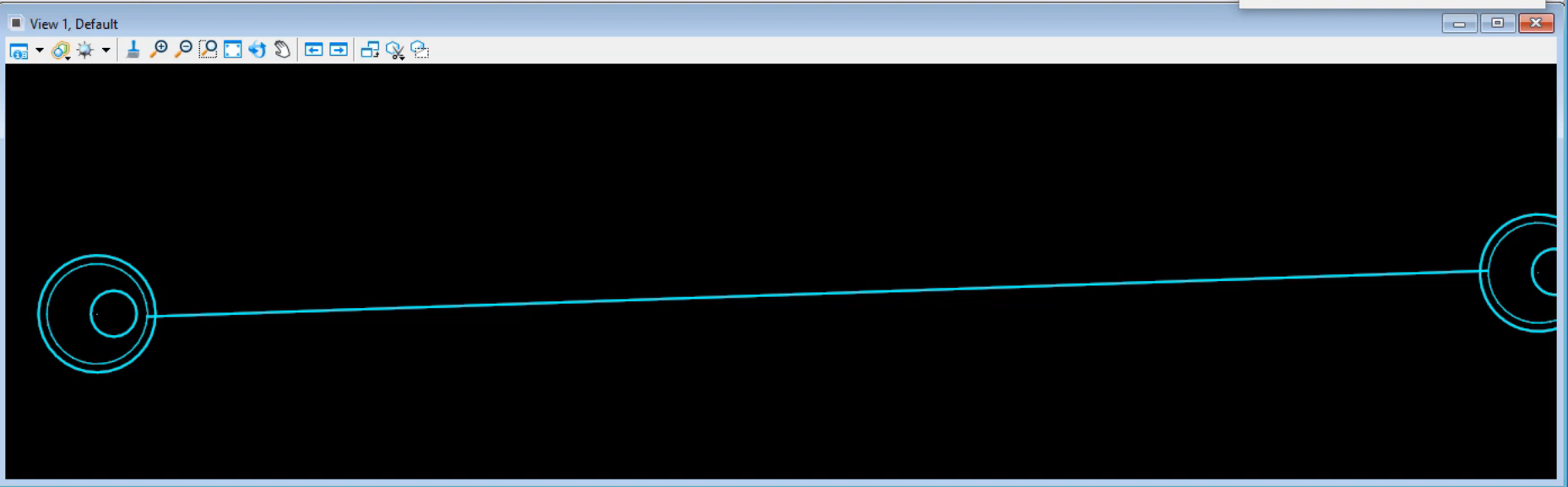
Analysis Tools

Analysis Views

Element Selection

Explorer

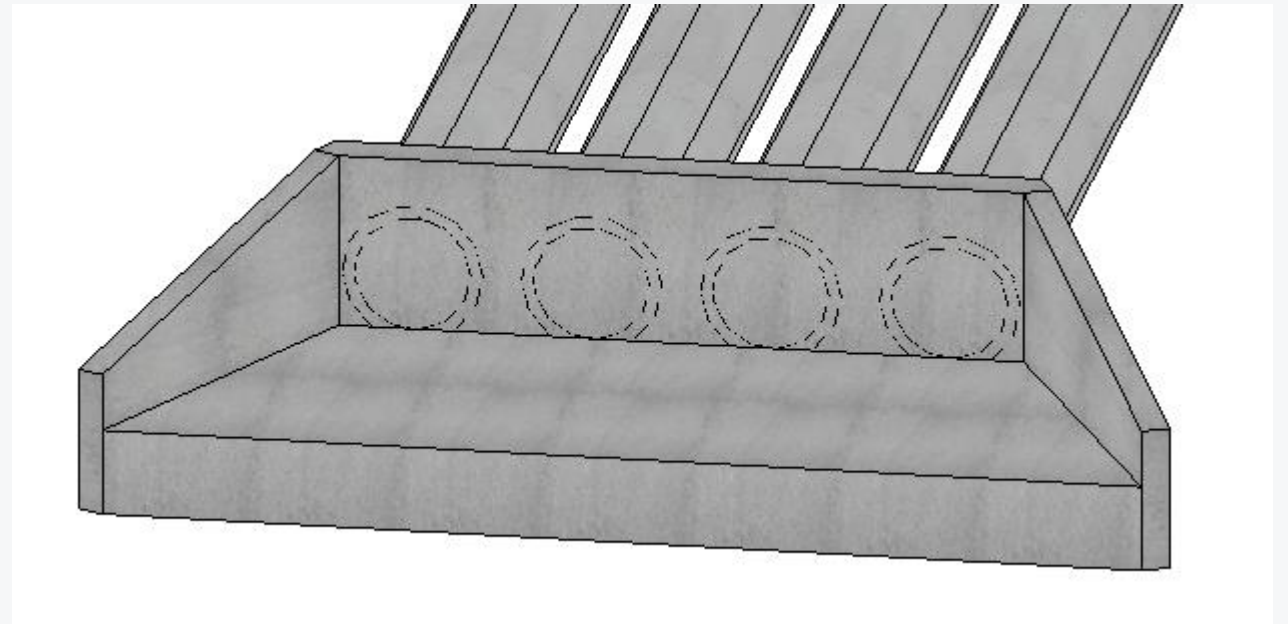
- File
- Items
- Resources
- OpenRail Model
- Sheet Index
- Links
- OpenRail Standards**
  - Rail
  - Site
  - Analysis
  - Drainage and Utilities
    - Conduit
      - CommunicationsSegment
      - ElectricalSegment
      - GasSegment
      - GenericSegmentAsset
      - POLSegment
      - StormWater
        - Pipes
          - Circular
            - Storm Water (Concrete)
            - Storm Water (Small Concrete)
        - ThermalSegment
        - WasteWaterSegment
        - WaterSegment
      - Drainage Area
      - Node
    - Feature Symbologies
    - Annotation Groups
  - Drainage and Utilities Model
  - Survey



# Gap between multiple barrels

*Implemented a gap between barrels.*

*One extra property, but a lot of benefits and simplification*



File Home Layout Analysis Components Utilities View Tools Report Drawing Production Drawing Utilities Collaborate View Help

Primary Selection Element Selection Place Node Place Nodes Insert Node Place Conduit Place Lateral Place Gutter Place Catchment Place Pond Place Low Impact Develo... Place Land Use Area Extract From Graphic Filter Manager Hydraulic Run From Node Hydraulic Runs to Outfall Utility Run From Links Project Run Civil Accudraw Message Center Civil Center

Layout Profile Runs Toggles

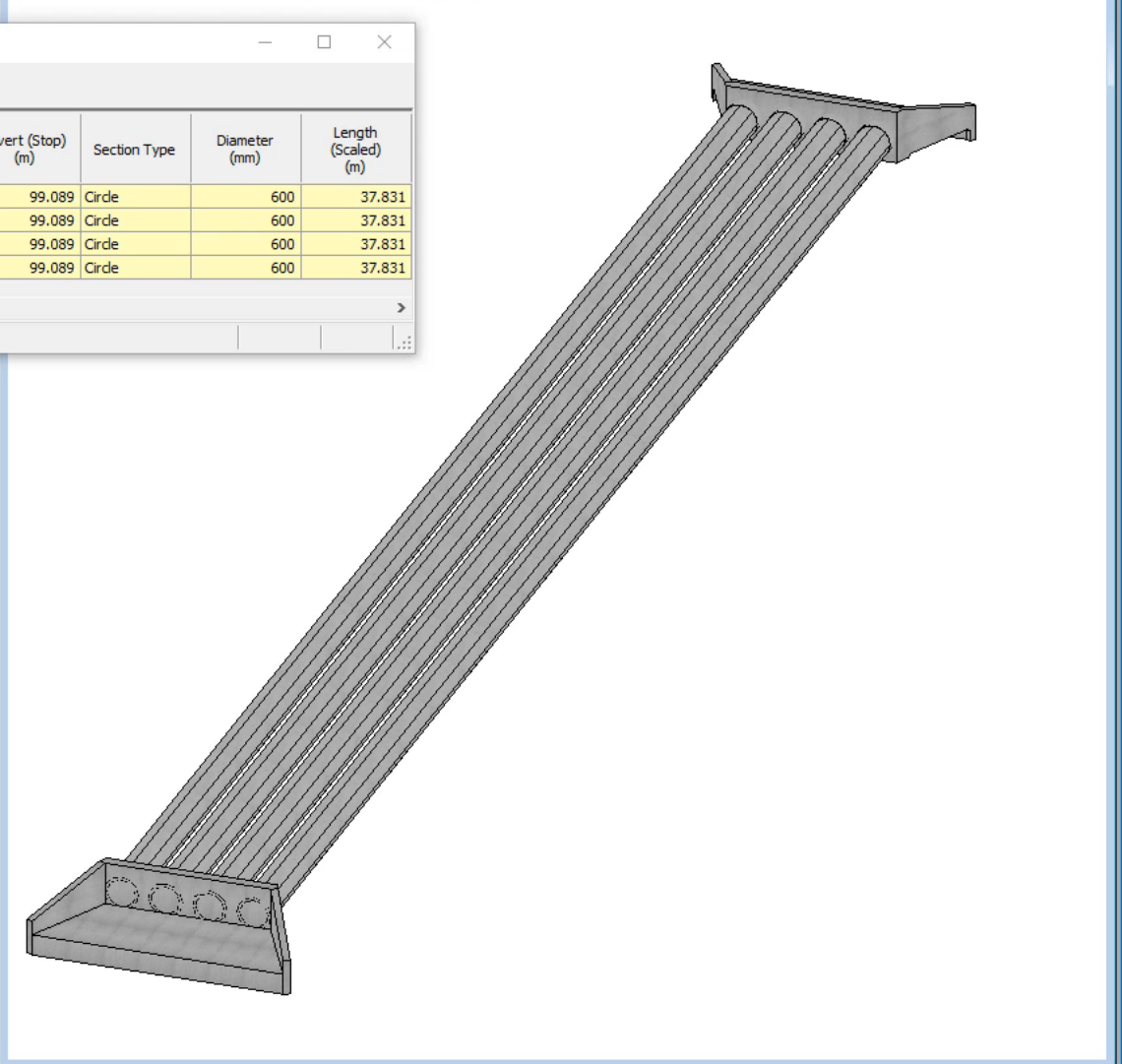
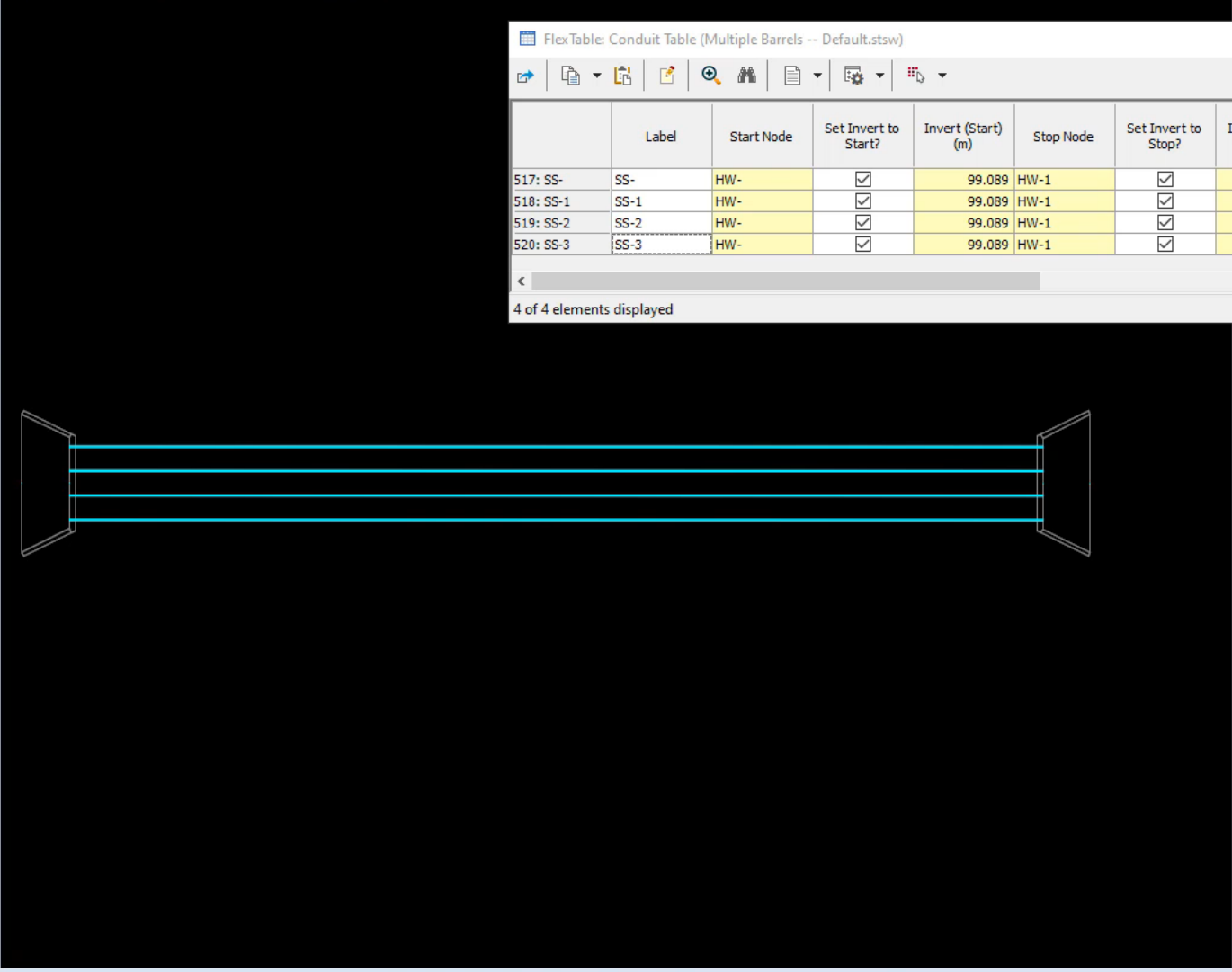
Element Selection

View 1, Default View 2, Default-3D

FlexTable: Conduit Table (Multiple Barrels -- Default.stsw)

	Label	Start Node	Set Invert to Start?	Invert (Start) (m)	Stop Node	Set Invert to Stop?	Invert (Stop) (m)	Section Type	Diameter (mm)	Length (Scaled) (m)
517: SS-	SS-	HW-	<input checked="" type="checkbox"/>	99.089	HW-1	<input checked="" type="checkbox"/>	99.089	Cirde	600	37.831
518: SS-1	SS-1	HW-	<input checked="" type="checkbox"/>	99.089	HW-1	<input checked="" type="checkbox"/>	99.089	Cirde	600	37.831
519: SS-2	SS-2	HW-	<input checked="" type="checkbox"/>	99.089	HW-1	<input checked="" type="checkbox"/>	99.089	Cirde	600	37.831
520: SS-3	SS-3	HW-	<input checked="" type="checkbox"/>	99.089	HW-1	<input checked="" type="checkbox"/>	99.089	Cirde	600	37.831

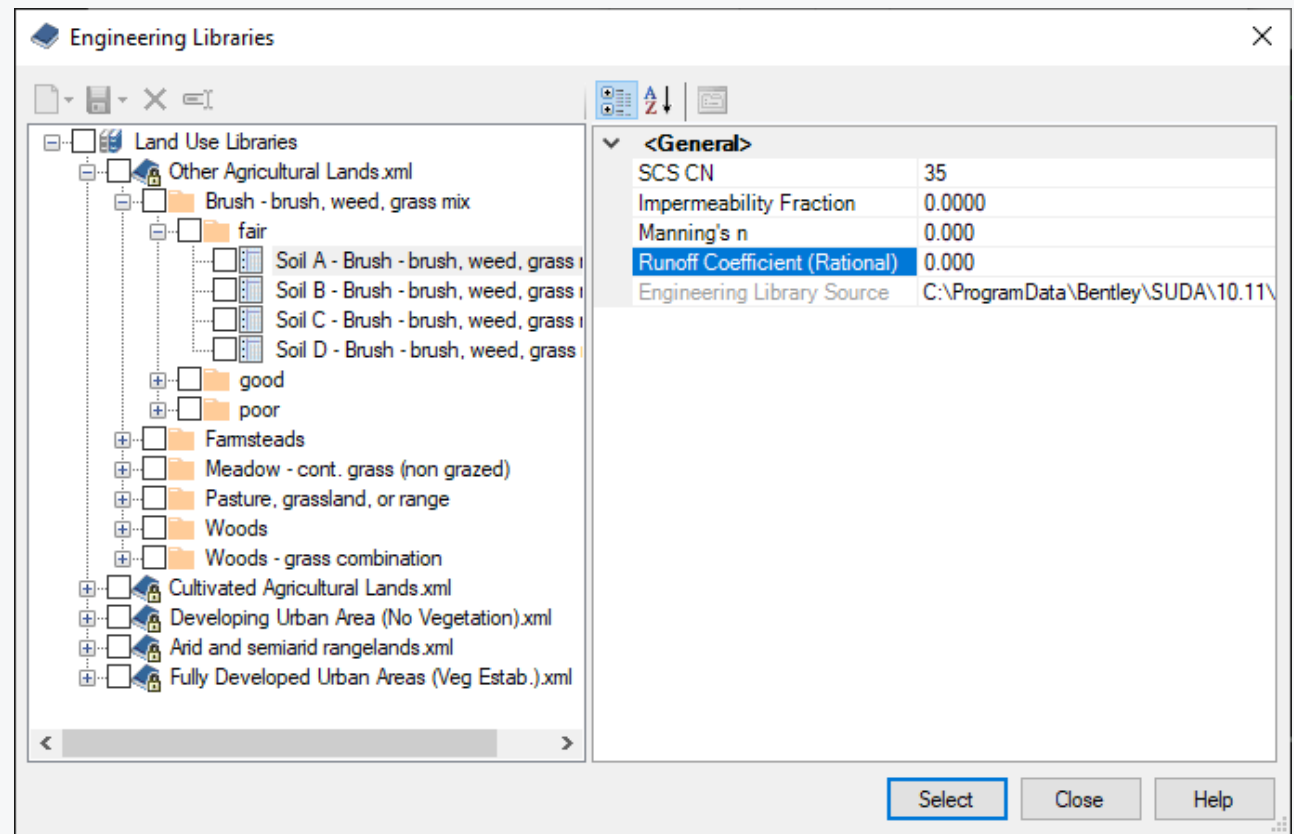
4 of 4 elements displayed





# Land Use Polygons

*New functionality to identify different land use areas. Catchment areas inherit from land use areas, and calculate a weighted runoff coefficient.*



File Home Layout Analysis Components Utilities View Tools Report Drawing Production Drawing Utilities Collaborate View Help

Primary Selection

Place Lateral Place Pond Place Low Impact Develo... Place Land Use Area

Place Node Place Nodes Insert Node Place Conduit Place Catchment

Extract From Graphic Filter Manager

Hydraulic Run From Node Hydraulic Runs to Outfall Utility Run From Links Project Run

Civil Accudraw Message Center Civil Center

Layout Profile Runs Toggles

Properties - Surface Polygon - Grass Land Use-1 (210)

Utilities Drainage

Grass Land Use-1 75%

<Show All>

Property Search

<General>

ID	210
Label	Grass Land Use-1
Notes	
GIS-IDs	<Collection: 0 items>
Hyperlinks	<Collection: 0 items>
Feature Definition	DrainageArea\Surface Polygon\Grass

<Geometry>

Geometry	<Collection: 4 items>
Scaled Area (ha)	0.767

<Active Topology>

Is Active?	True
------------	------

<Land Cover>

Land Cover Type	<None>
Impermeability Fraction Adjustment Type	<None>
Manning's n Adjustment Type	<None>
SCS CN Adjustment Type	<None>
Rational C Adjustment Type	User Defined
Rational C (User Defined)	0.350

<Type/Operations>

Type	Land Use
Priority	0: Lowest/Auto

<Results>

Calculation Messages	<Collection: 0 items>
----------------------	-----------------------

Land Cover

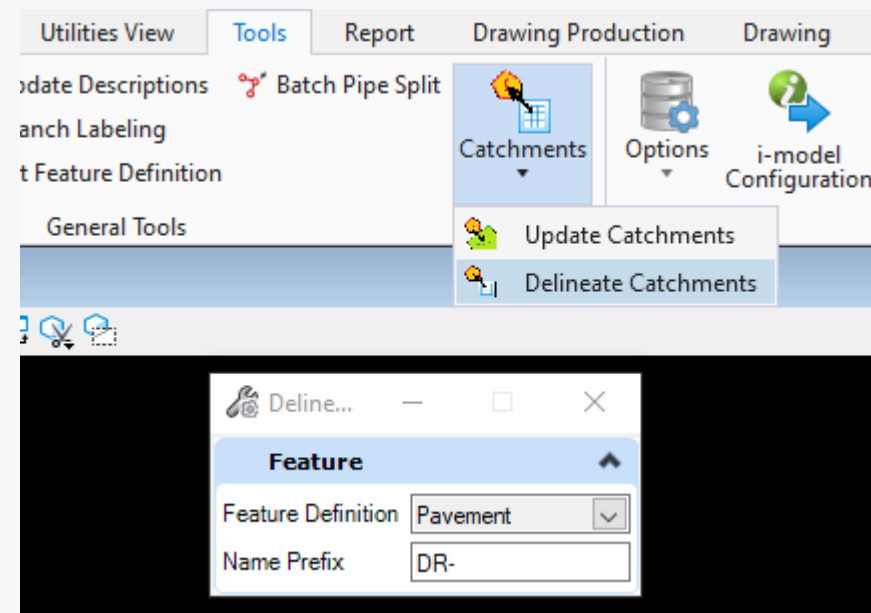
Element Selection

1 2 3 4 5 6 7 8

Polygon: Grass Land Use-1, Level: Util\_Storm\_Areas

# Delineate Catchment

*Added functionality to delineate catchment areas for existing inlets*



File Home Layout Analysis Components Utilities View Tools Report Drawing Production Drawing Utilities Collaborate View Help

Attributes: None, Default, 0, 0, 0, 0, 0

Primary: Explorer, Attach Tools, Element Selection, Fence Tools

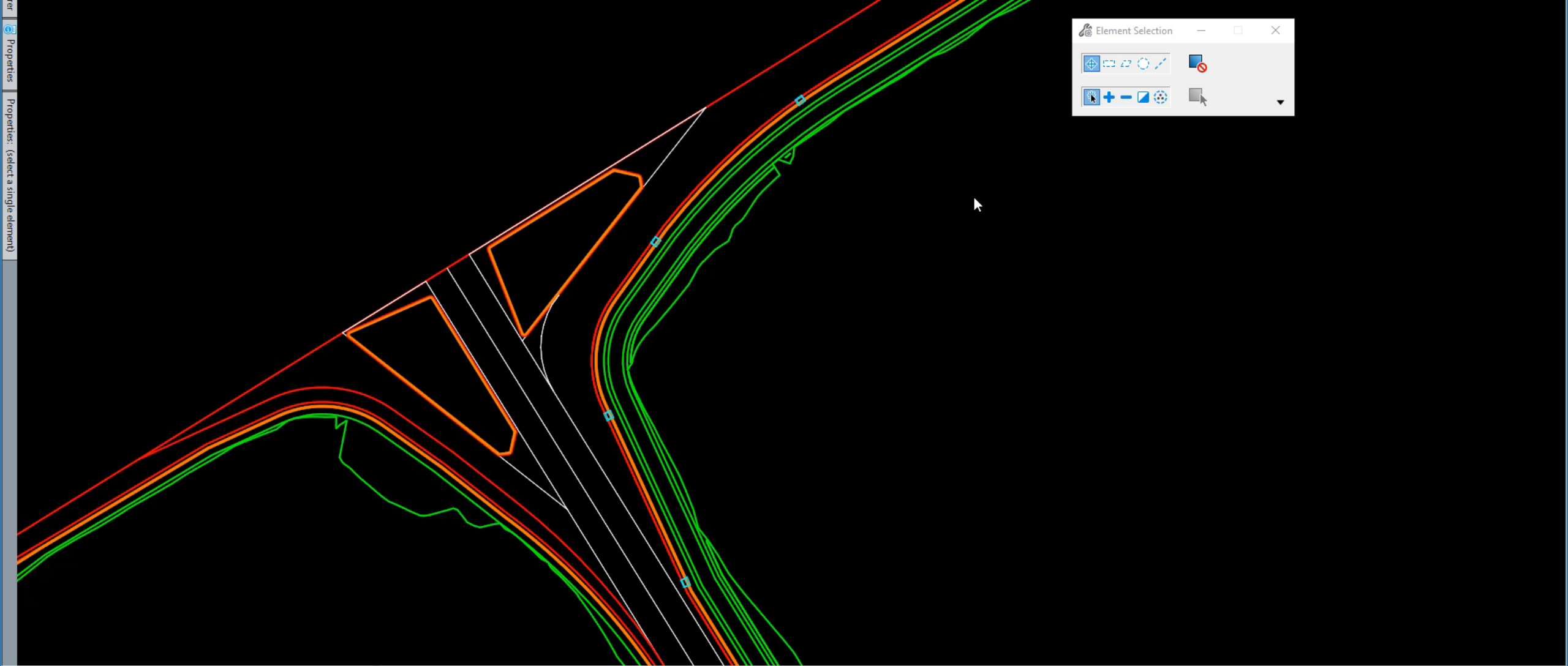
Selection: Civil Analysis, Terrain Import, Import Geometry, Import Utilities, Export Utilities

Model Analysis: About Drainage and Util...

Model Import/Export: Drainage and Utilities Help

View 1, Default

Explorer, Properties, Properties: (Select a single element)



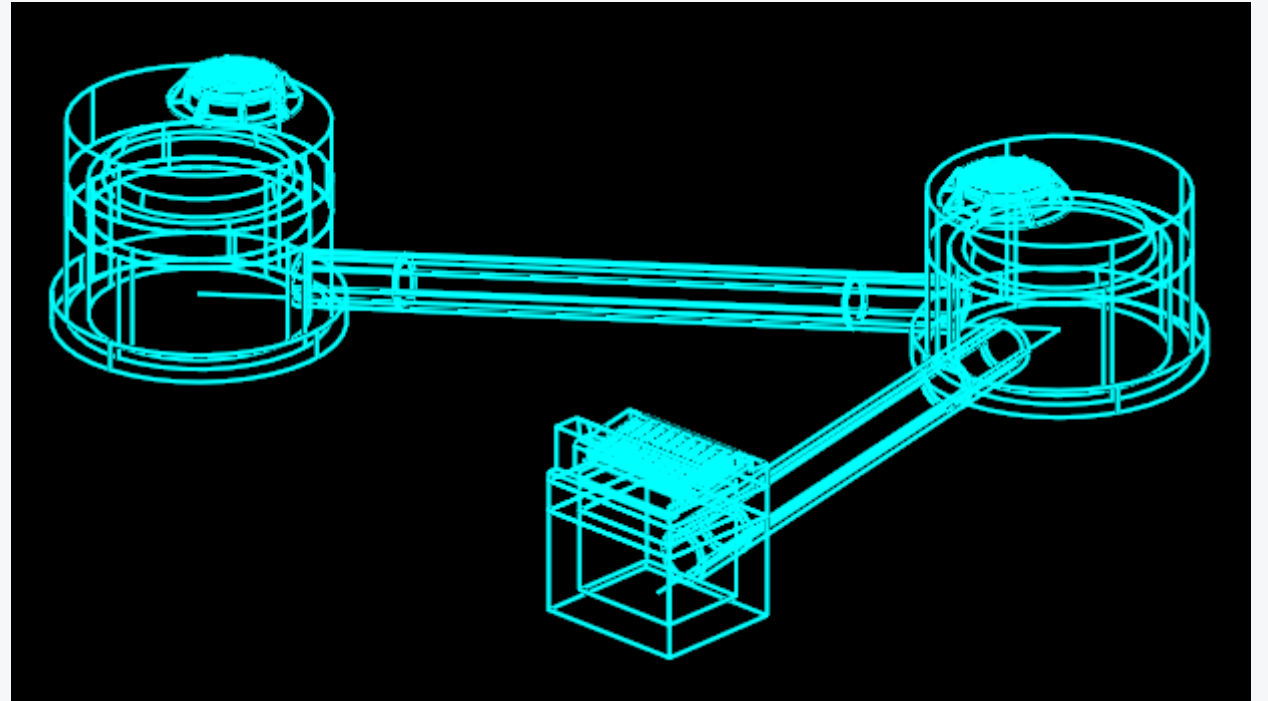
Element Selection

Tools: Selection, Lasso, Window, Polygon, Add, Subtract, Boolean, Erase, Undo, Redo, Help



# Connection Point

*Added a connection point, as opposed to a connection ring or region.*



File Home Layout Analysis Components Utilities View Tools Report Drawing Production Drawing Utilities Collaborate View Help

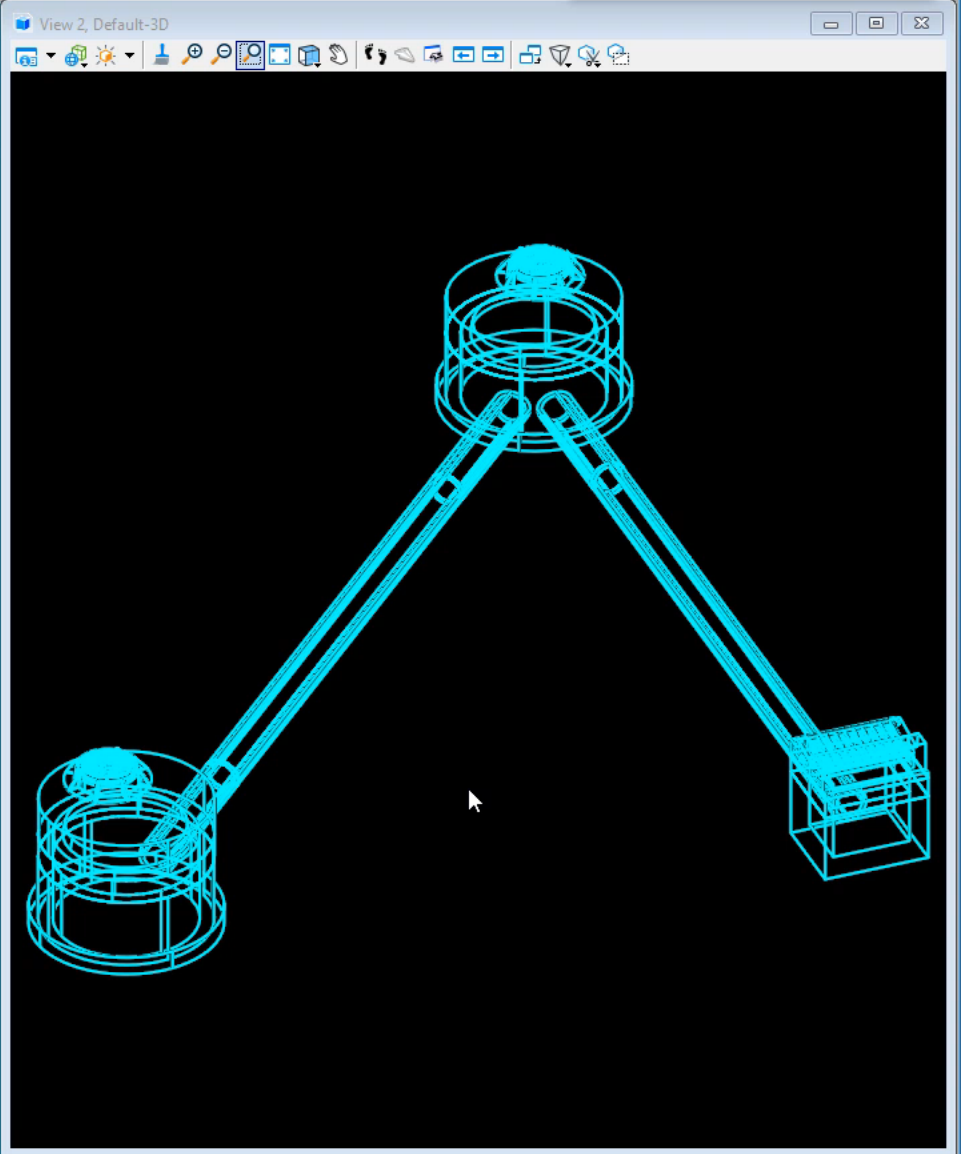
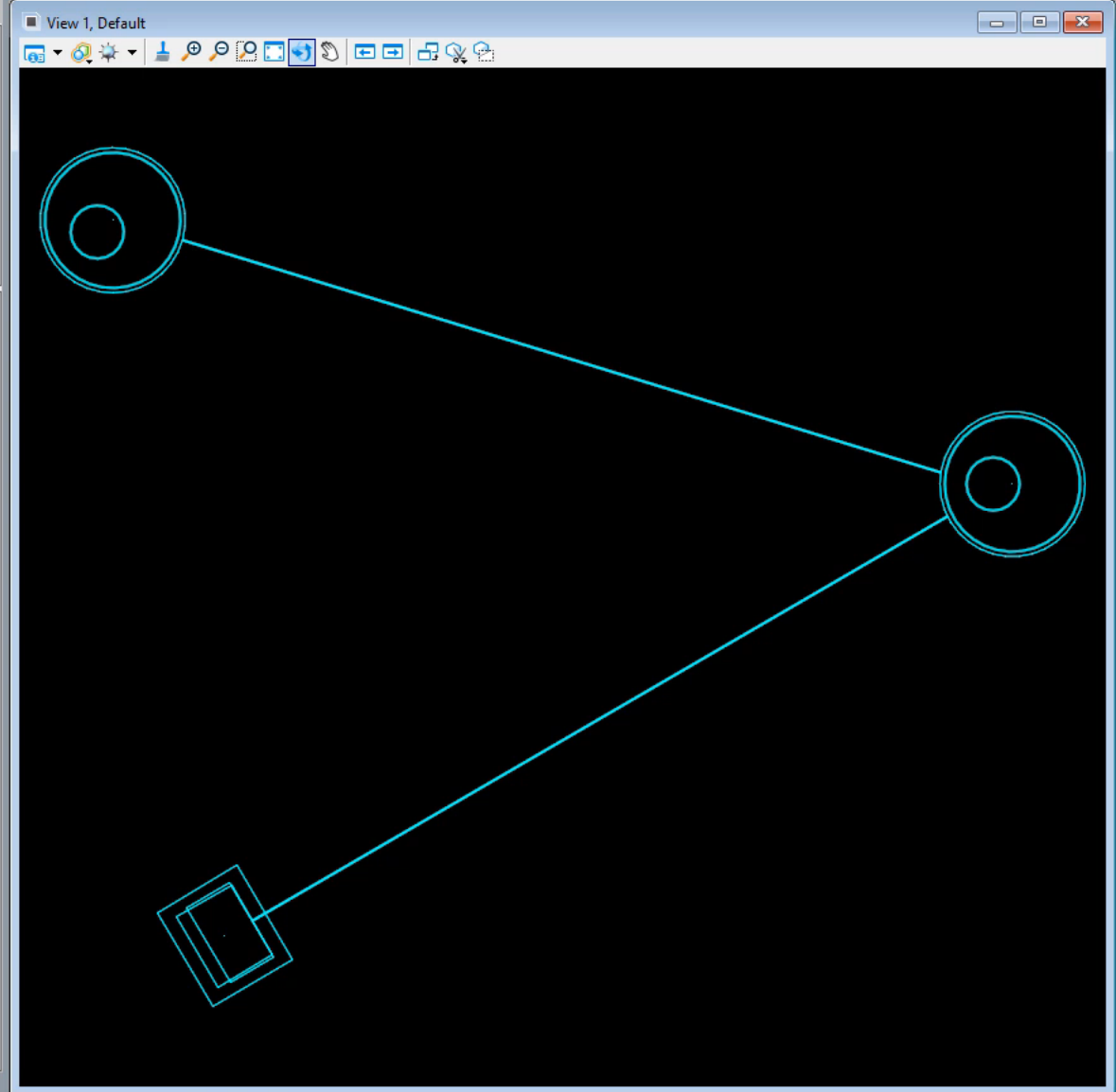
Place Lateral Place Pond Place Pond Place Low Impact Develo... Extract From Graphic Filter Manager Hydraulic Run From Node Hydraulic Runs to Outfall Utility Run From Links Project Run Civil Accudraw Message Center Civil Center

Layout Profile Runs Toggles

Element Selection

Properties

To see properties something must be selected.



# Conflict Detection

*Resolved issues with references*

*Fixed bugs*

*Added a Conflicts count*

*Added a button to open the Conflicts FlexTable*

The screenshot shows a dialog box titled "Criteria" with a "Global Options" tab. It contains a checkbox for "Allow Soft Conflict" which is unchecked, a dropdown menu for "Use Soft Clearance" set to "Use Soft Clearance", and a text input field for "Soft Clearance" with the value "0.00000". Below this are two expandable sections: "Check These Features" and "Against These Features". The "Check These Features" section contains one item: "Conduit\GasSegment\Gas Line (HDPE)". The "Against These Features" section contains three items: "Conduit\CommunicationsSegment\Fiber Optic Cable", "Conduit\WasteWaterSegment\Sanitary Line (A2000 PVC)", and "Conduit\WaterSegment\Water Line (HDPE)". At the bottom, a status bar shows "New Conflicts Found = 12. Total Conflicts = 12." with a red border. To the right of the status bar are three buttons: "Process", "Conflict Table" (highlighted with a red border), and "Close".



OpenRoads



OpenBridge



OpenSite



OpenRail



# What may be new in Drainage and Utilities 2022 R 2

Presented by:





# Disclaimer Statement

Release plans and timelines are forward-looking estimates and projections only. There can be no assurance that Bentley will be able to meet such estimates or projections by the dates specified, or at all. Do not make purchase decisions based on forward looking roadmaps.

# Enhanced API

- The WaterObjects.NET API has been available in OpenFlows for some time
- It works with Drainage and Utilities, but it needs direct access to the databases
- We recently added the ability to export a Utilities Submodel, to help here
- However, it would be easier if the API simply let you specify the DGN file, and state which database to use (Drainage or Utilities)
- The New OpenFlows API does this
- It also simplifies the code that you need to write
- This improved functionality can be used to write XML files, for DanDas (for example)
- Let's see what it looks like





**Thank you!**