



# Using Subsurface Utility Quality Control Tools to Ensure 100% Confidence

Presented by:  
Jonathan Smith – Product Manager – Subsurface Utilities



# Using Subsurface Utility Quality Control Tools to Ensure 10

## 0% Confidence

The Haestad storm water algorithms have been accurately designing projects for decades.

- How do you KNOW your project is correctly modeled?
- Subsurface Utilities has extensive Quality Control tools.
- In this presentation we will explore the built-in tools and what is set up for Quality Control in the delivered workspace.

Be ready! Be confident!

# Subsurface Utilities

---

- Subsurface Utilities is the nom du jour
  - You may see it abbreviated as SU
  - Replaces the name “Subsurface Utilities Design and Analysis (SUDA)”
  - Mostly a Name and Version change
  - It’s part of OpenRoads Designer
  - Encompasses StormCAD/CivilStorm/SewerCAD/SewerGEM

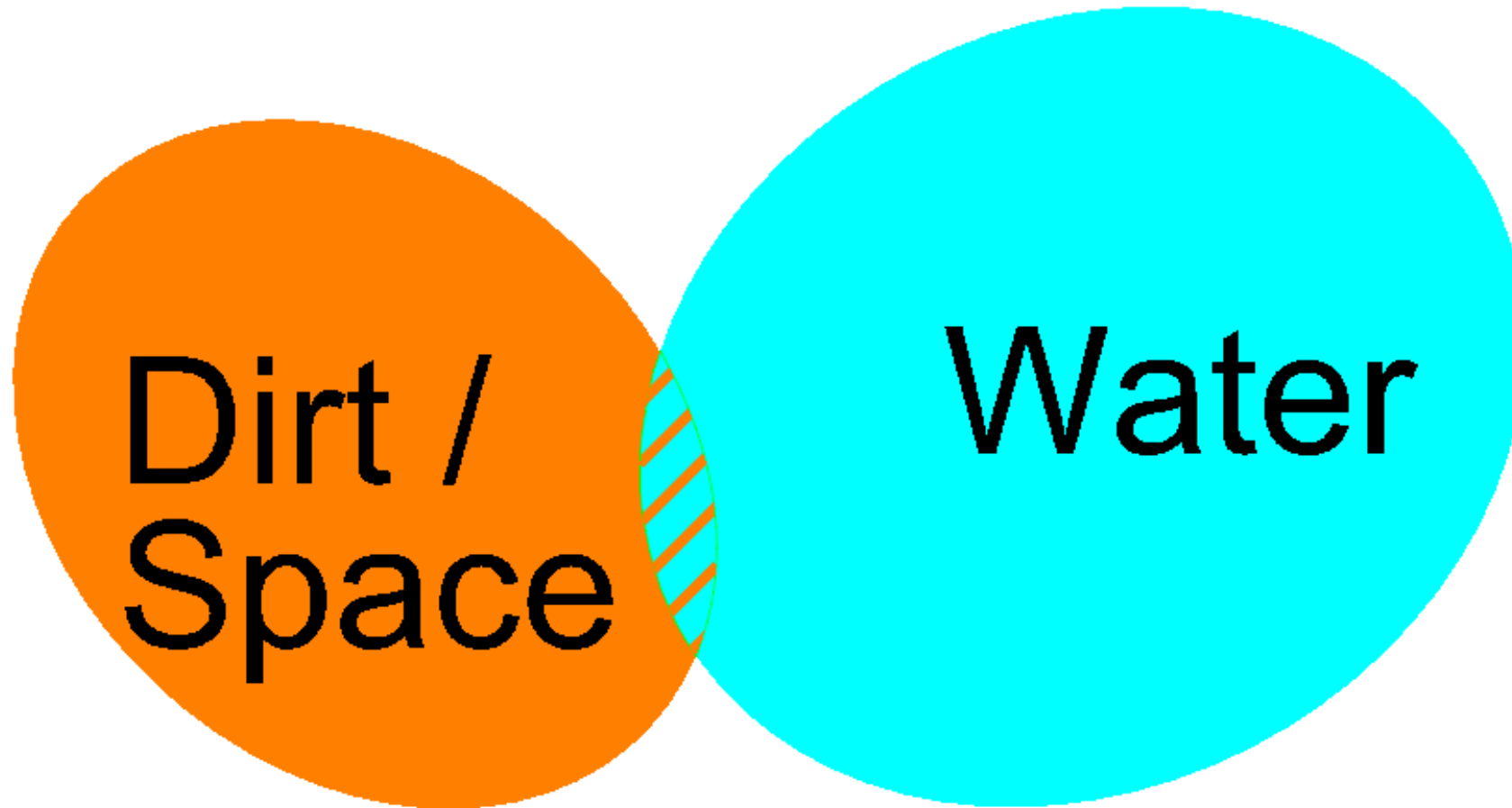
# Outline

Why QC?

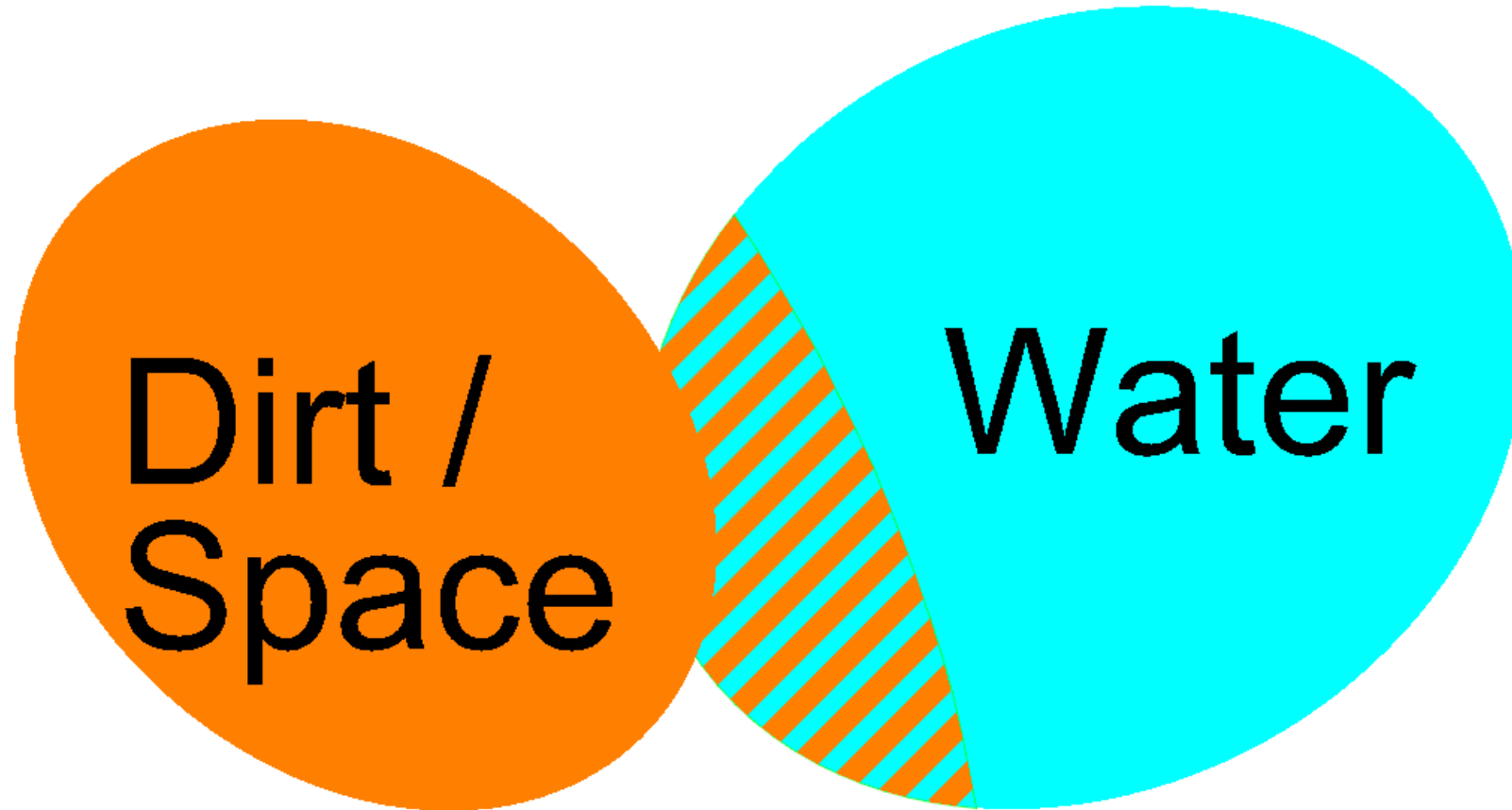
What have we added/changed to the Workspace?

- “Coherent” Inlets (as opposed to “Type G”)
- Color Coding...
- Tooltips works in Update 2...

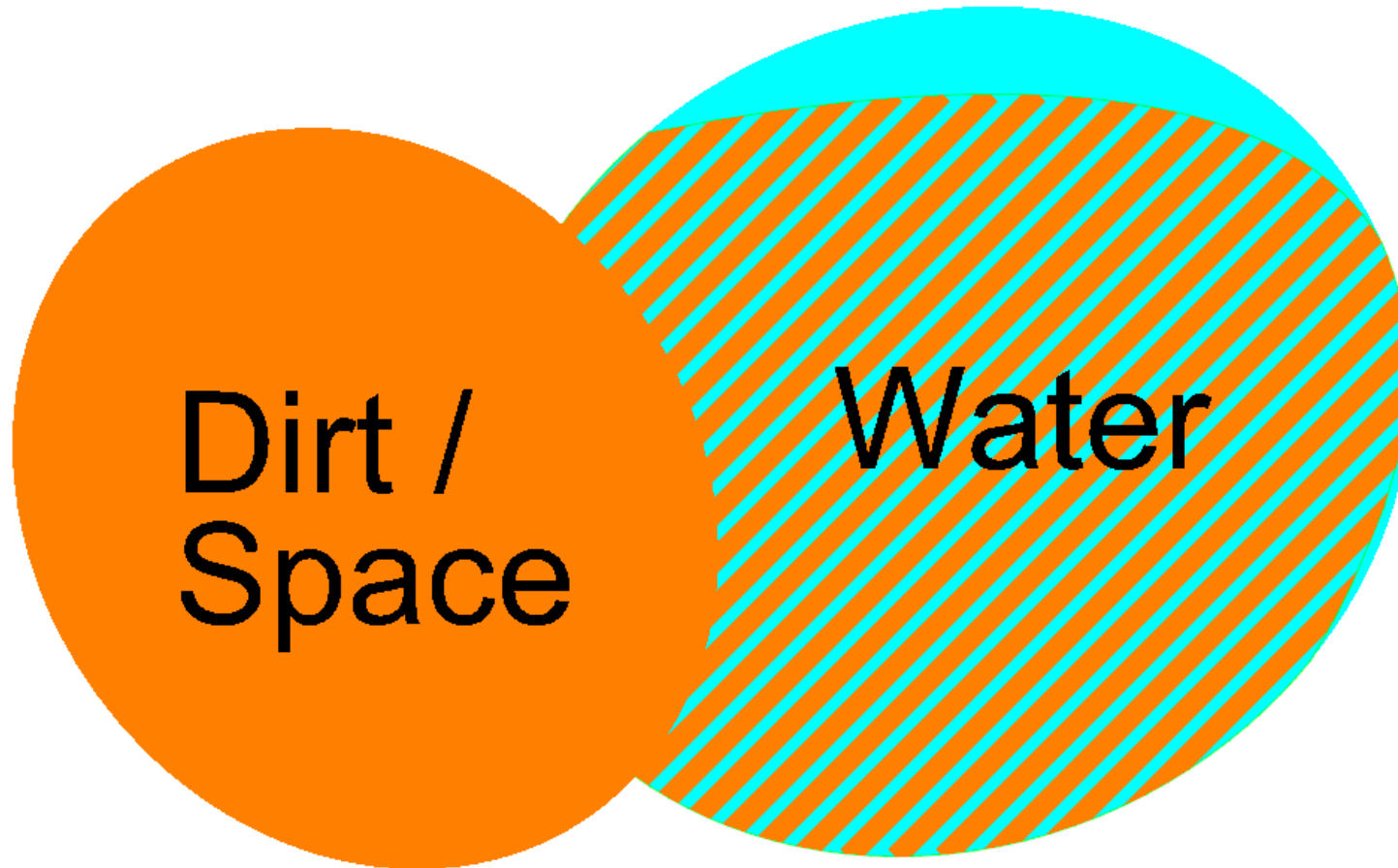
# Two Verticals



# Older Civil Products with Drainage (InRoads, GEOPAK, MX)

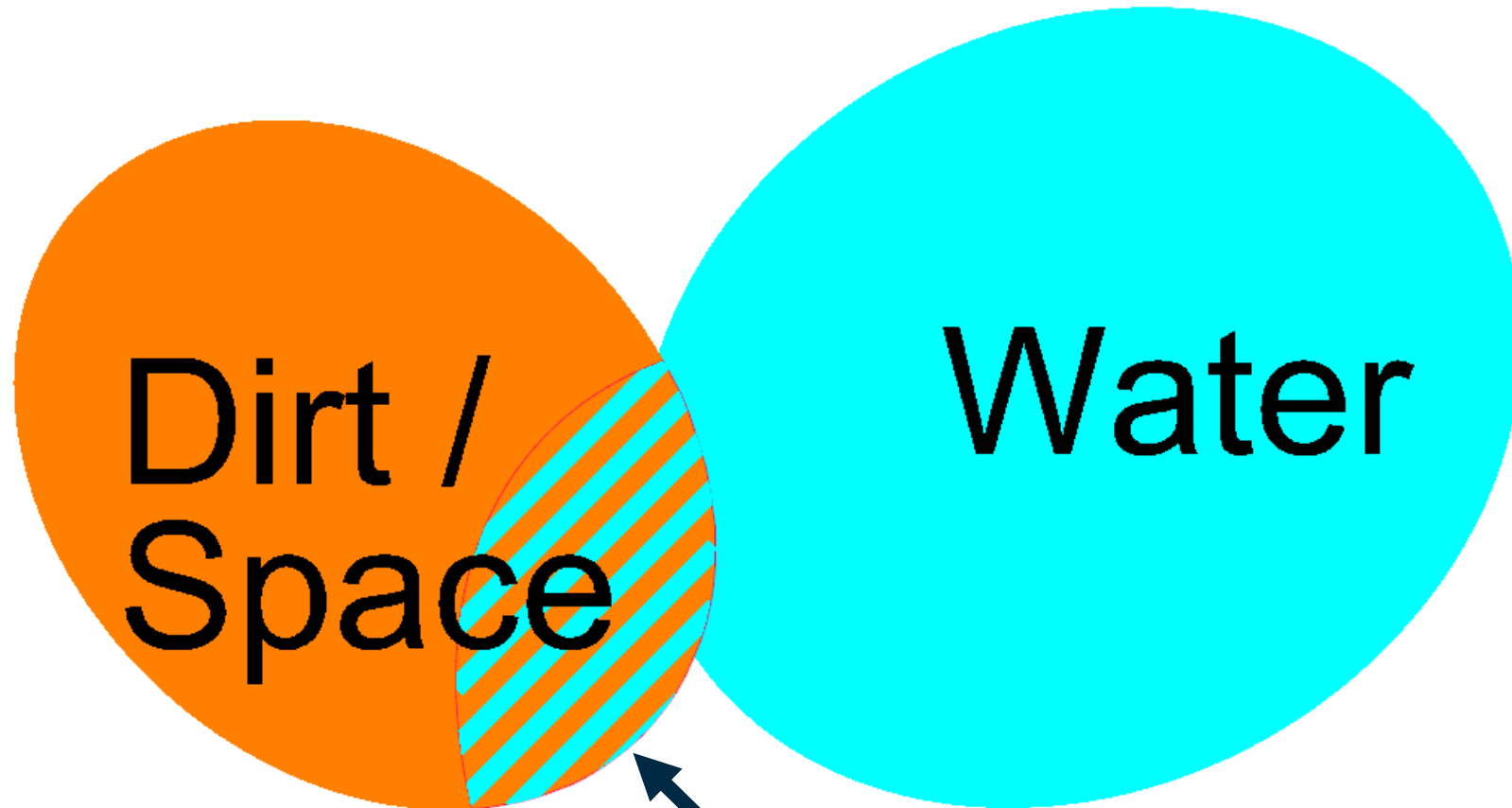


# OpenRoads & Subsurface Utilities: Expands the Scope



And uses proven Hydraulics Engines

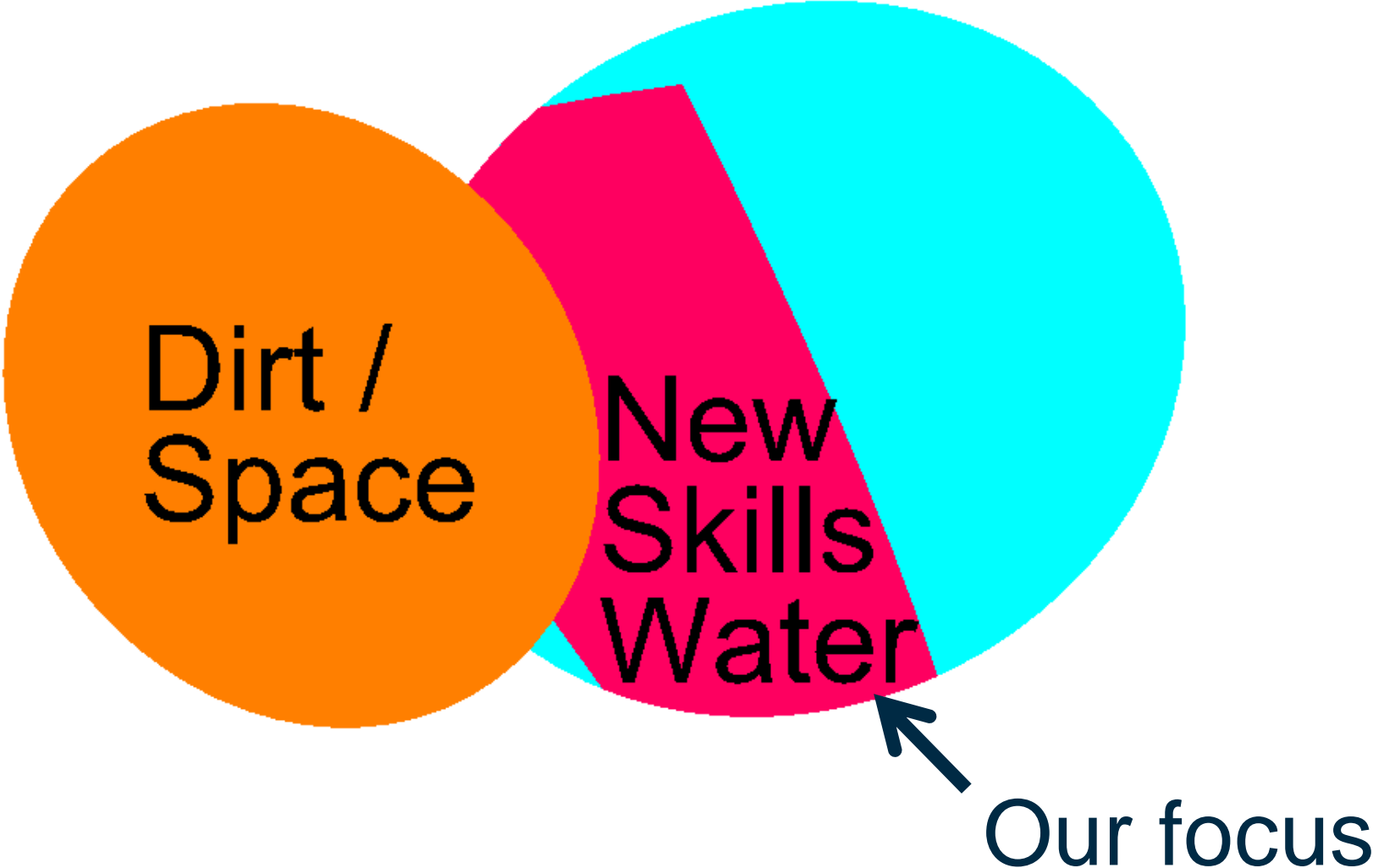
# StormCAD/CivilStorm Users moving to OpenRoads



a little OpenRoads Training  
Bentley



# Non-StormCAD: New Capabilities = New Responsibilities



# How do we become 100% Confident?

- Train the Gaps
  - OpenRoads Fundamentals
  - Subsurface Utilities
    - Operational (Kinesthetic) Training (What to click)
      - Subsurface Utilities Fundamentals
    - Deeper Training
      - “What Happens when you...”
    - QC Tools and Techniques
    - Your Implementation and Standards
- Training as a Process
  - Help and Communities
  - Connect Advisor

# You're Trained up and CONNECTed in...

---

- Do you feel 100% Confident now?
  - Probably Not
  - How do we get there?

# QC Tools and QC Processes!!!

## Why Quality Control?

- If you have staff, how familiar are you with each individual's strengths, weaknesses, and blindspots?
- If you are reviewing subcontractors or clients, can you assume anything at all?
- Why Assume and Hope, when you can KNOW?



~~Happens?~~

# Quality Doesn't “Just Happen”

You have to ***ensure*** it:

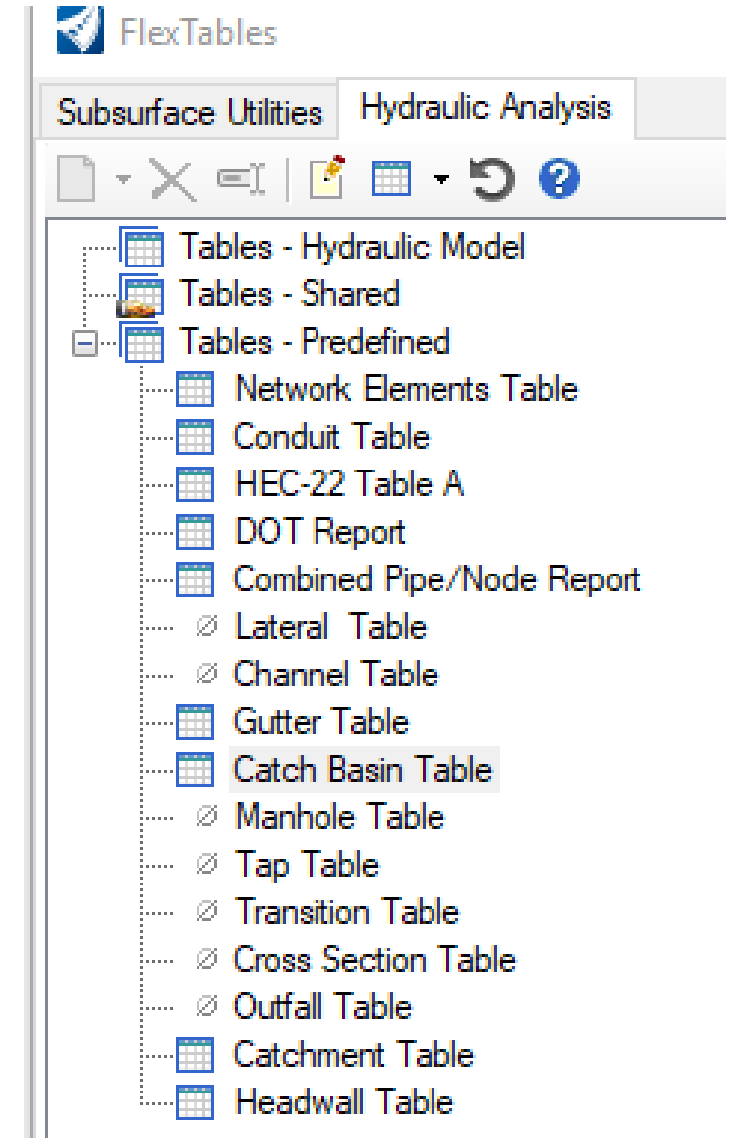
- Know your vulnerabilities/opportunities
- Plan your efforts
- Look for automation
- Automate
- Document
- Confirm

# How Subsurface Utilities facilitates your Quality Assurance

- **Built-in Tools**
  - **Full intrinsic database integration**
    - All tools are based on it
  - **User Defined Extensions**
    - Database extensions
    - Fully integrated into the other tools
    - Formulaic!
  - **Labels**
  - **Color Coding**
  - **Queries**
  - **Reports**
    - Built-in
    - To Excel
- See [\*Evaluating Subsurface Utilities\*](#) class

# Many Tools are available, Some are “Predefined”

- FlexTables Provide powerful Reporting Capabilities
  - Easily User-customizable, but generally: single table (structure type)
  - Predefined FlexTables can span multiple tables (Network Elements, etc.)
  - Custom Formats (HEC-22 Table A, DOT Reports)
- Delivered Workspaces continually add new pre-sets
- What are *your* needs?

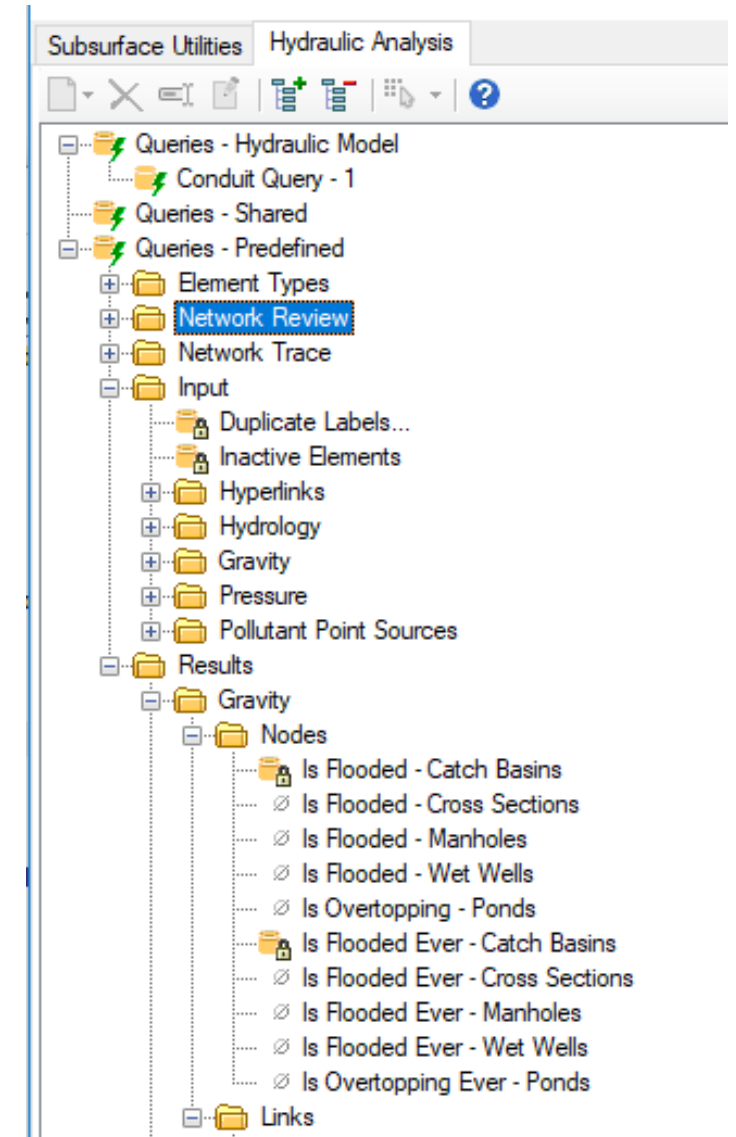




# Many Tools are available, Some are “Predefined”

Queries provide powerful Filtering and QC Capabilities

- Easily User-customizable, but generally: single table (structure type)
  - Predefined Queries can span multiple tables (Network Trace, etc.)
- Predefined Queries are Robustly Populated.
  - Don't forget to look here when you are troubleshooting or looking for QC capabilities.



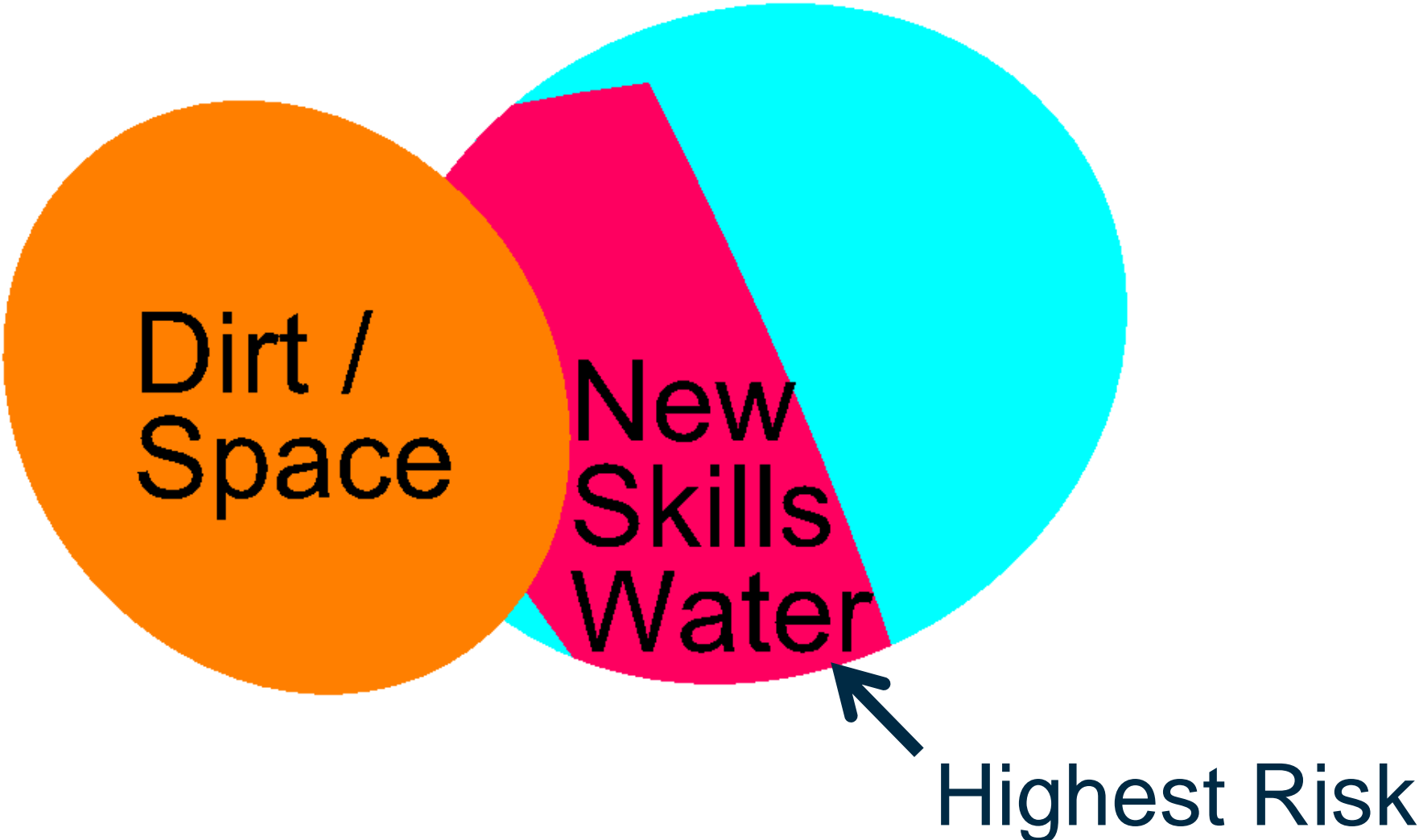
# Many Tools are available, Training Workspace has Presets

- In addition to “Predefined”, you’ll want more...
- Delivered Workspaces continually add new pre-sets
- What are *your* needs?

# Your Workspace Setup

- OpenRoads Workspace Training & Documentation
  - [OpenRoads Designer Workspace Setup Learning Path](#)
- Subsurface Utilities Training & Documentation
  - [4 Subsurface Utility Design and Analysis Learning Path](#)
    - *Meeting Subsurface Utility Standards and Streamlining Design* class

# Biggest Delta = Biggest Need for QC



# New Scope = Higher “Deviation Opportunity” = QC Priority

- SU: StormCAD > Native Drainage (InRoads, GEOPAK)
- SU: StormCAD >> Spreadsheet
- SU: CivilStorm >>> Native Drainage

Broader Scope =	Areas of less expertise
More Advanced Calcs =	More Settings and Variables
More Capability =	Options now where there was none before
More Power =	A Deeper Settings Hierarchy (e.g., Scenarios & Alternative)

# Design Your QC tools to identify the “Deviations”

Areas of less expertise	<ul style="list-style-type: none"><li>• Anticipate what your staff or your contractors may not understand;</li><li>• Set up appropriate workspace defaults;</li><li>• Provide tools that flag incorrect settings.</li></ul>
More Settings and Variables	<ul style="list-style-type: none"><li>• Set up appropriate workspace defaults;</li><li>• Provide tools that flag incorrect settings.</li></ul>
Options now where there was none before	<ul style="list-style-type: none"><li>• Set up appropriate workspace defaults;</li><li>• Provide tools that flag incorrect settings.</li></ul>
A Deeper Settings Hierarchy (e.g., Scenarios & Alternative)	<ul style="list-style-type: none"><li>• Provide tools that flag incorrect settings.</li></ul>

# User Defined Extensions (UDX)

Don't feel limited by the default Data Structure

- UDX = New, Custom Database Fields
  - Anything you want to track, you can add
  - Fully-integrated with other QC Tools (behaves like built-in data fields)
  - Can be included in hydraulic seed files
  - You can build fields specifically for QC
    - General Storage (BIM)
    - Calculated fields
    - True/False QC Checks
  
- [Adding Your Own Data - User Data Extensions](#) class

# The Remainder is an Exploration of Workspace QC Presets

- Customize the ideas here to meet your needs
- New Inlet Types
- Tooltips
- Labels
- Color Coding
- Queries
- Reports



# Inlet Genealogy – Workspace Update

- Place Node
  - Physical Properties
  - Feature Definition
    - Feature Symbology (Plan, Profile, 3D)
    - Hydraulic Prototype
      - Inlet Location (On-Grade or In Sag)
      - Inlet Capture Type
      - Inlet Catalog
        - Design Sizes

# Tooltips

- Example
- Setting GUI
- How to share

# Labels

- Analytic Symbology
- Everything in the database (including UDX)
- New “OpenRoads” Annotation

# Network Navigator

- Has some unique queries and capabilities

# Color Coding

- Allows Quick Visual Identification of Good/Bad structures
  - Based on anything in the database (including UDX)
  - Color Range & Weighting

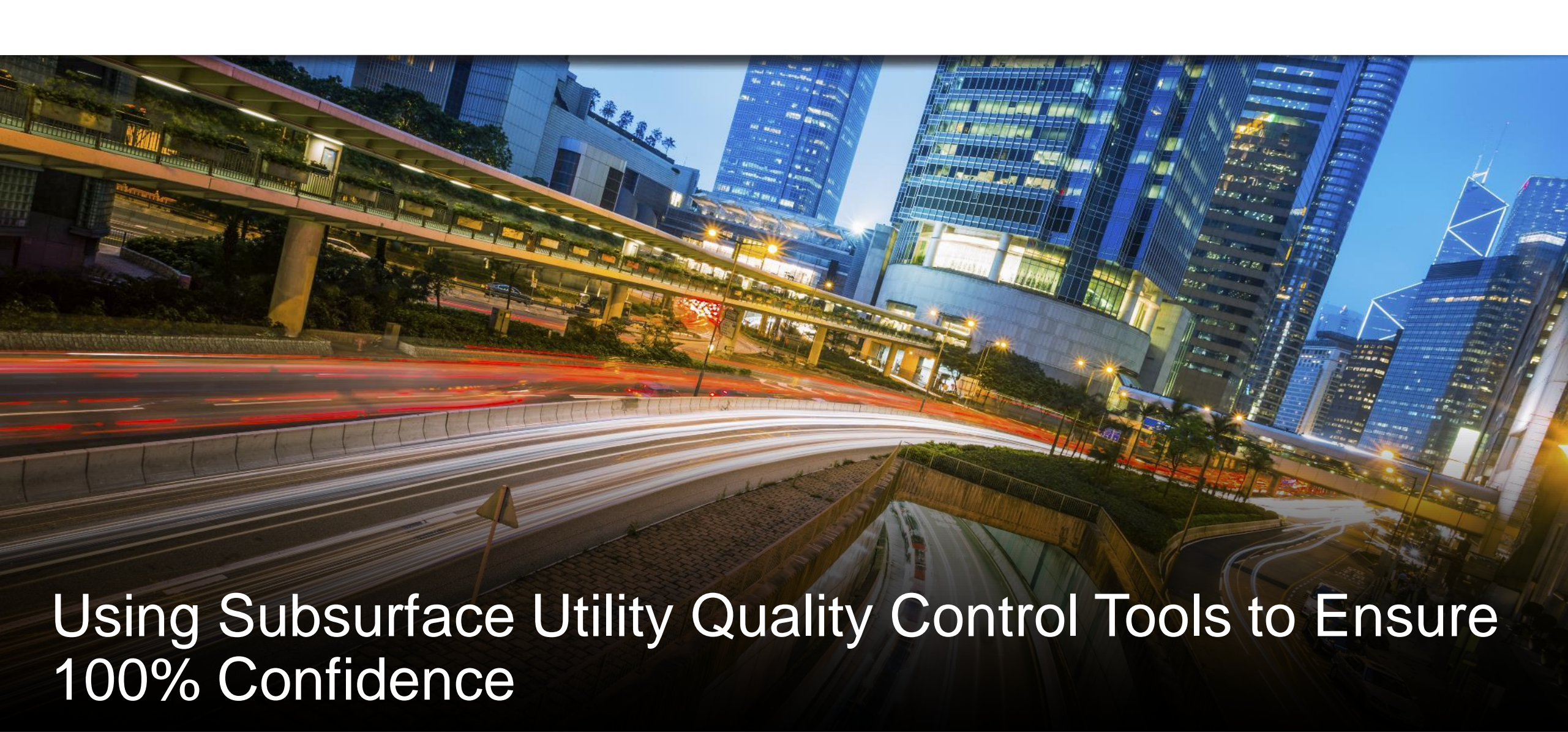
<<<example: scrolling through (mucho down-arrow) multiple ColorCodings (looking for red)>>>

# FlexTables

- Let us know if there are some you need; we can add them to the “Predetermined” list

# Queries

- Let us know if there are some you need; we can add them to the “Predetermined” list



Using Subsurface Utility Quality Control Tools to Ensure  
100% Confidence

Thank You