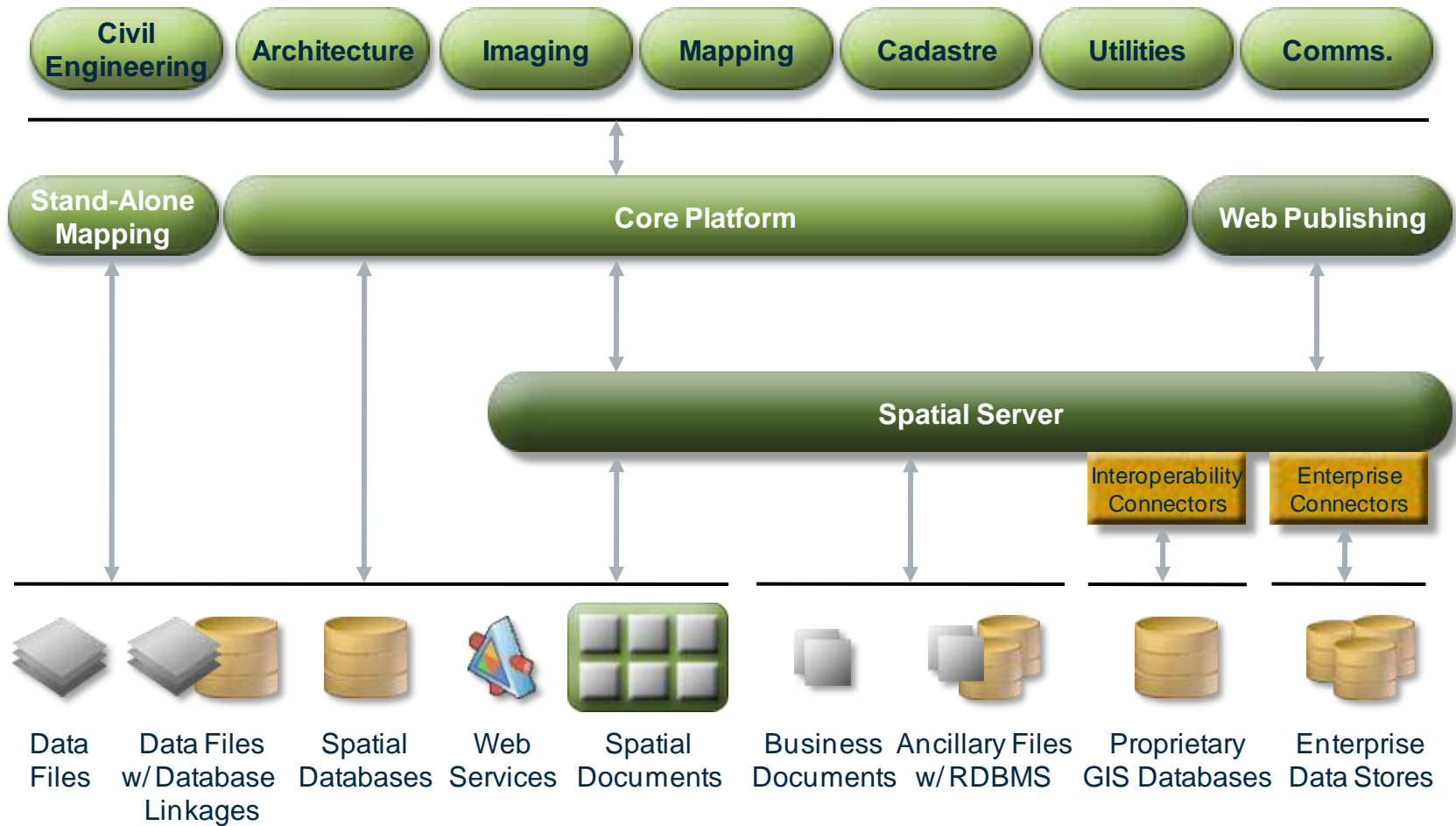




"Import af Mapinfo og ArcGIS filer i MicroStation"

Gijsbert Noordam, Bentley
Vejele, 10 November 2007

The Bentley Geospatial Solution

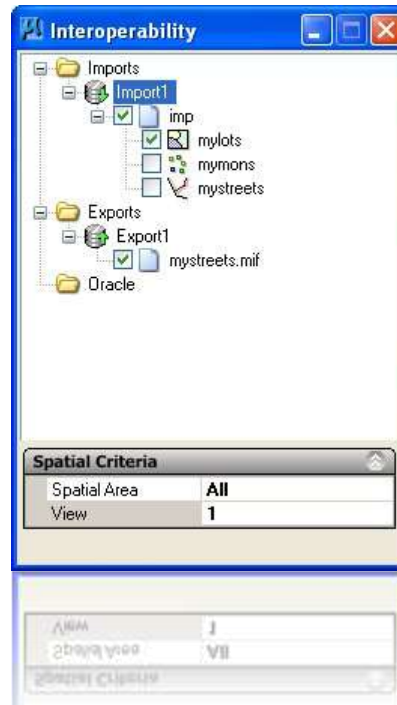


Bentley Map

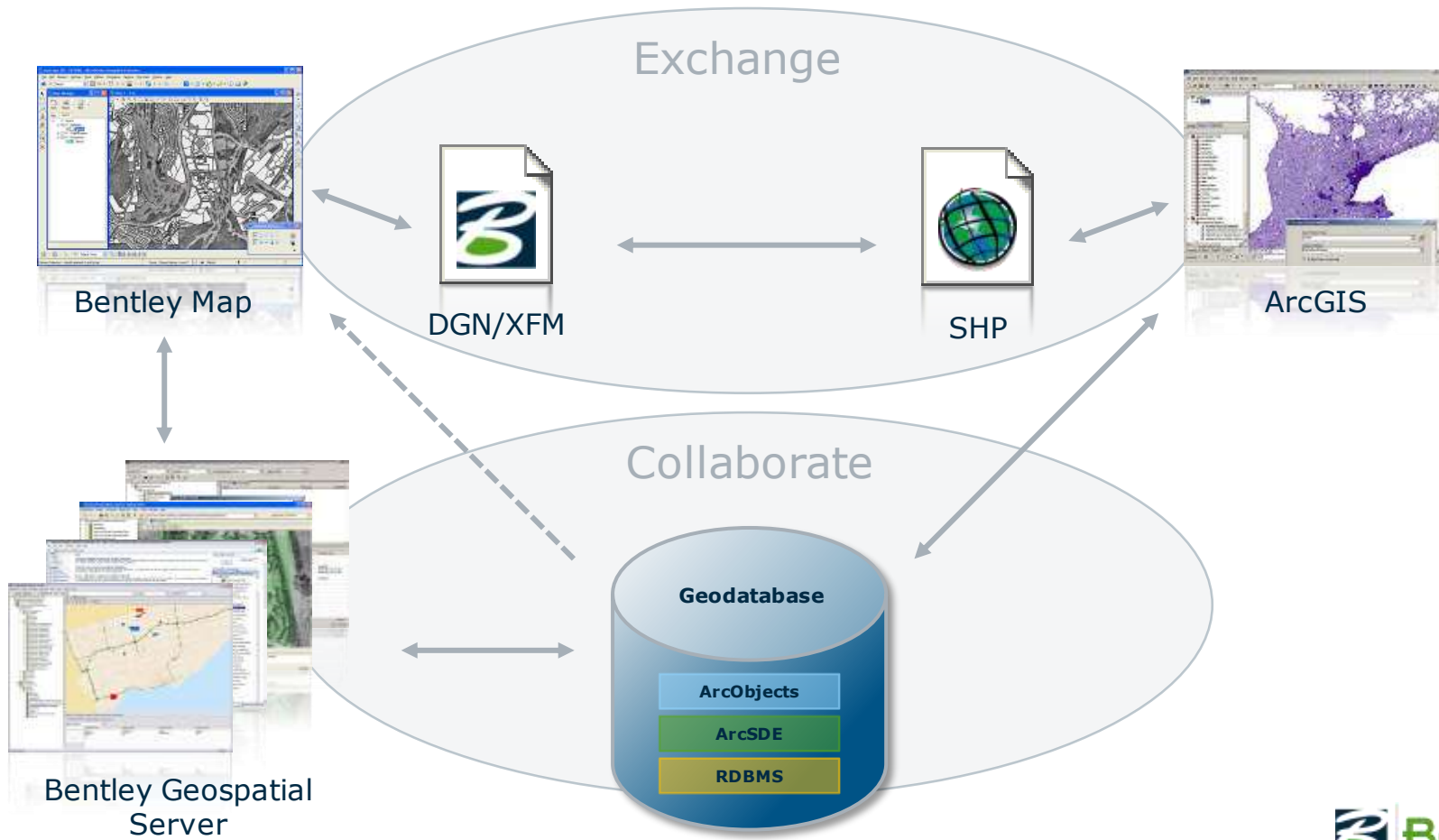
<i>Pain</i>	<i>Feature</i>	<i>Advantage</i>	<i>Benefit</i>
Absence of adequate graphical editing tools	MicroStation-based editing and drawing tools	Comprehensive choice In editing options	<ul style="list-style-type: none"> • Improve editing quality and productivity
Geospatial data lacks intelligence	Bentley Map XFM object modeling environment	Ability to model and use geospatial objects	<ul style="list-style-type: none"> • Increase the value and usefulness of data
Different systems can't share information	Bentley Map interoperability tools	Easy exchange of geospatial data	<ul style="list-style-type: none"> • Improve information sharing
Two environments for editing and analysis are needed	Bentley Map reporting and spatial analysis tools	Editing and analysis in a single environment	<ul style="list-style-type: none"> • Improve efficiency in combined editing and analysis workflows
Cumbersome management of raster and vector data	Bentley Map's map manager tool	Easy 'mix and match' of various data sources	<ul style="list-style-type: none"> • Have access to on-demand, sophisticated digital maps

Interoperability

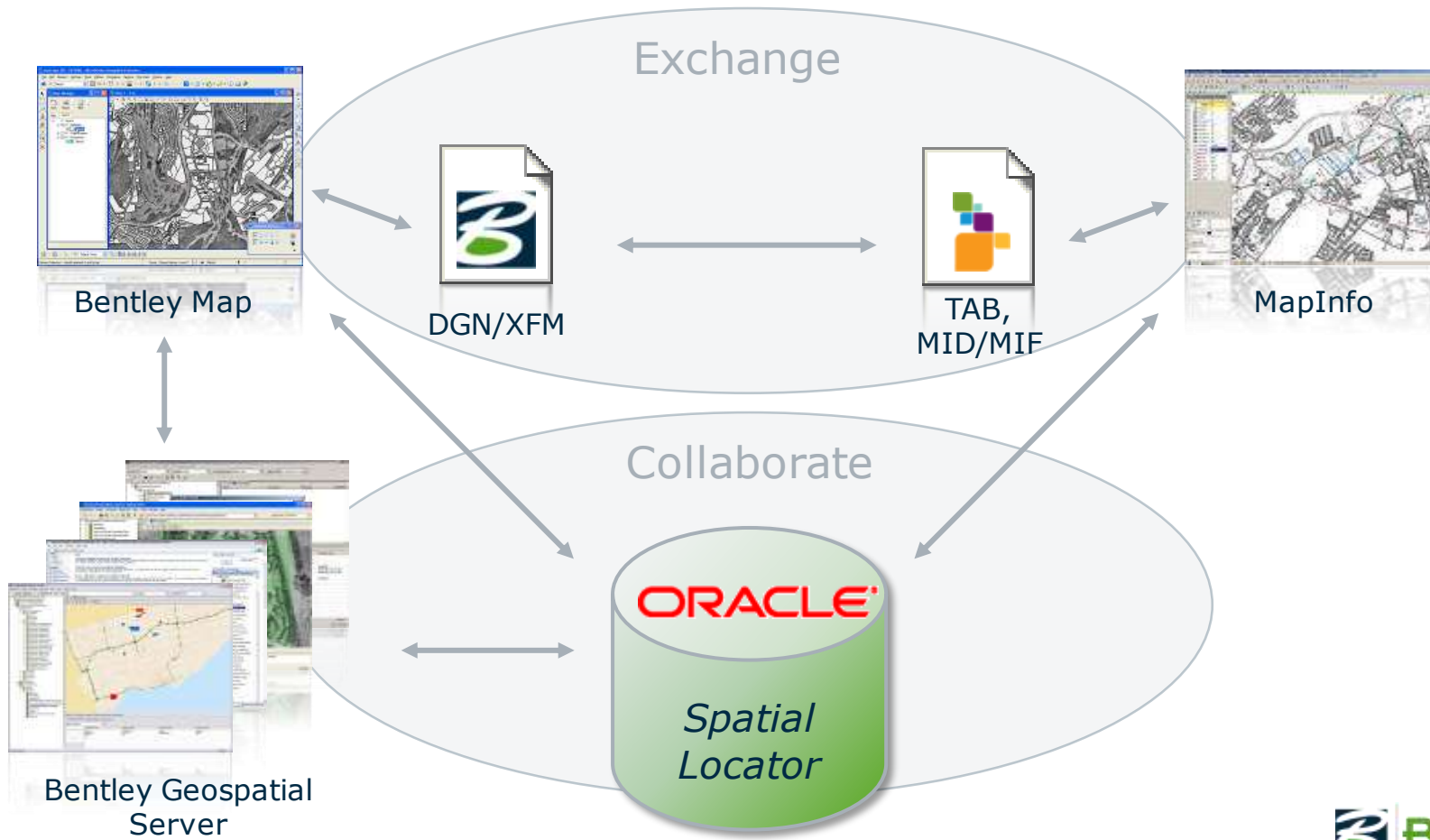
<i>Pain</i>	<i>Feature</i>	<i>Advantage</i>	<i>Benefit</i>
Different systems can't share information	Bentley Map interoperability tools	Easy exchange of geospatial data	<ul style="list-style-type: none"> Improve information sharing



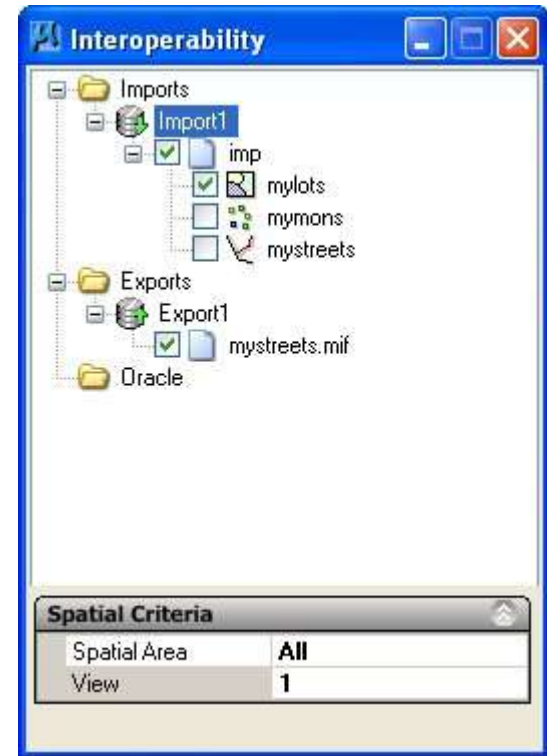
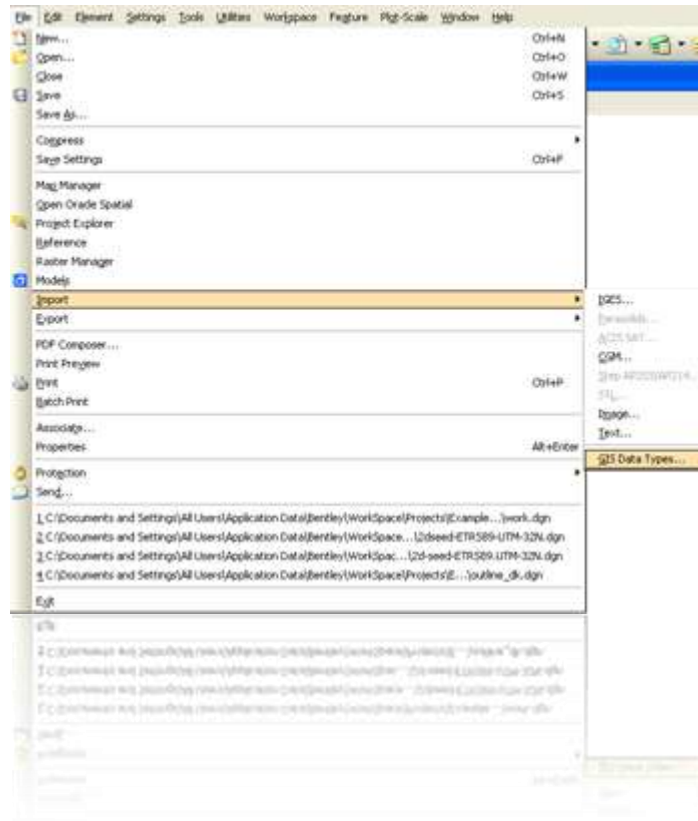
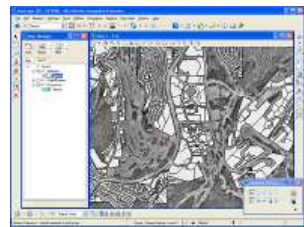
Bentley Map – ArcGIS interoperability



Bentley Map – MapInfo interoperability

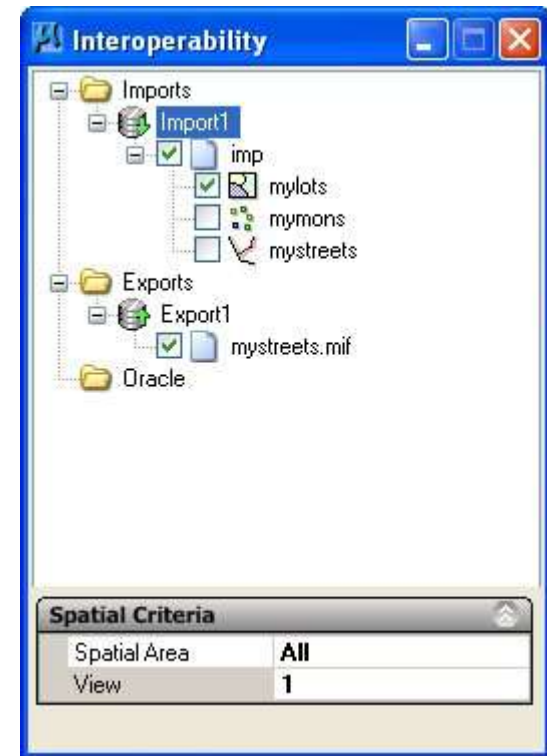


How does it work?



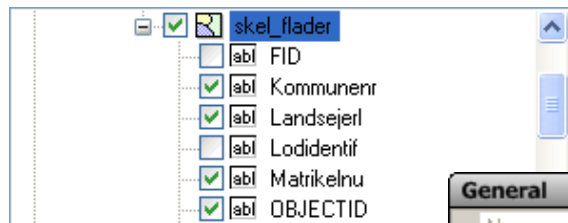
Importing GIS data – features

- Directly reference supported formats
- Import supported formats interactively
 - ESRI SHP, MapInfo MID/MIF and TAB, Oracle Spatial/Locator
- Save the import definitions as Import XML files
- Reference Import XML files
- Use Import XML files to load data



Import options

- Specify the area to import
 - Options: All, Fence, View
- Define feature settings
 - Feature name
 - Where Clause (sub-selection)
- Define “look-and-feel”
- Select, rename attributes



General	
Name	OBJECTID
Mapped Name	OBJECTID

Spatial Criteria	
Spatial Area	All
View	1

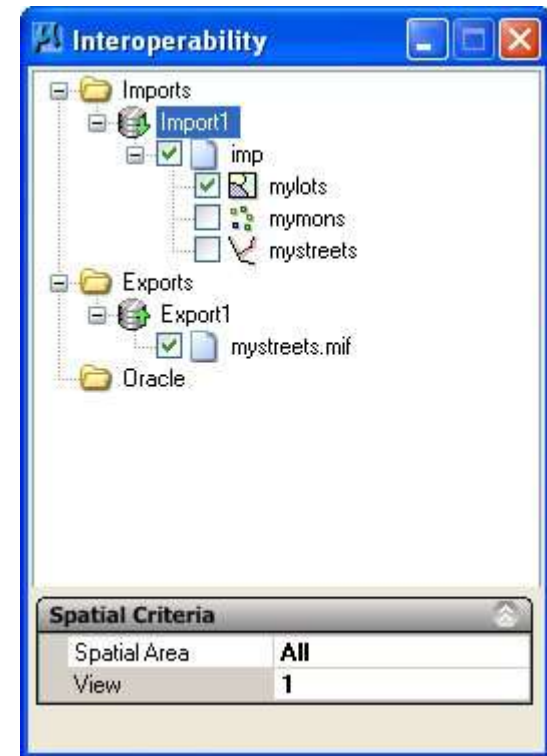
General	
Name	skel_flader
Geometry Type	Polygon
Mapped Name	skel_flader
Where Clause	OBJECTID <= 10

Symbology	
Level	skel_flader
Color	ByLevel
Transparency	0
Weight	ByLevel
Line Style	ByLevel
Priority	0
Element Class	Primary

Polygon	
Fill Mode	Specified Color
Fill Color	(none)

Exporting GIS data – features

- Export supported formats interactively
 - ESRI SHP, MapInfo MID/MIF and TAB, CSV files
- Save the export definitions as Export XML Files
- Use Export XML Files to unload data



Export options

- Specify the area to export
 - Options: All, Fence, View
- Creation options
 - Overwrite output file
 - “Flatten” 3D data
- Where Clause (sub-selection)
- Select, rename attributes

Spatial Criteria	
Spatial Area	All
View	1

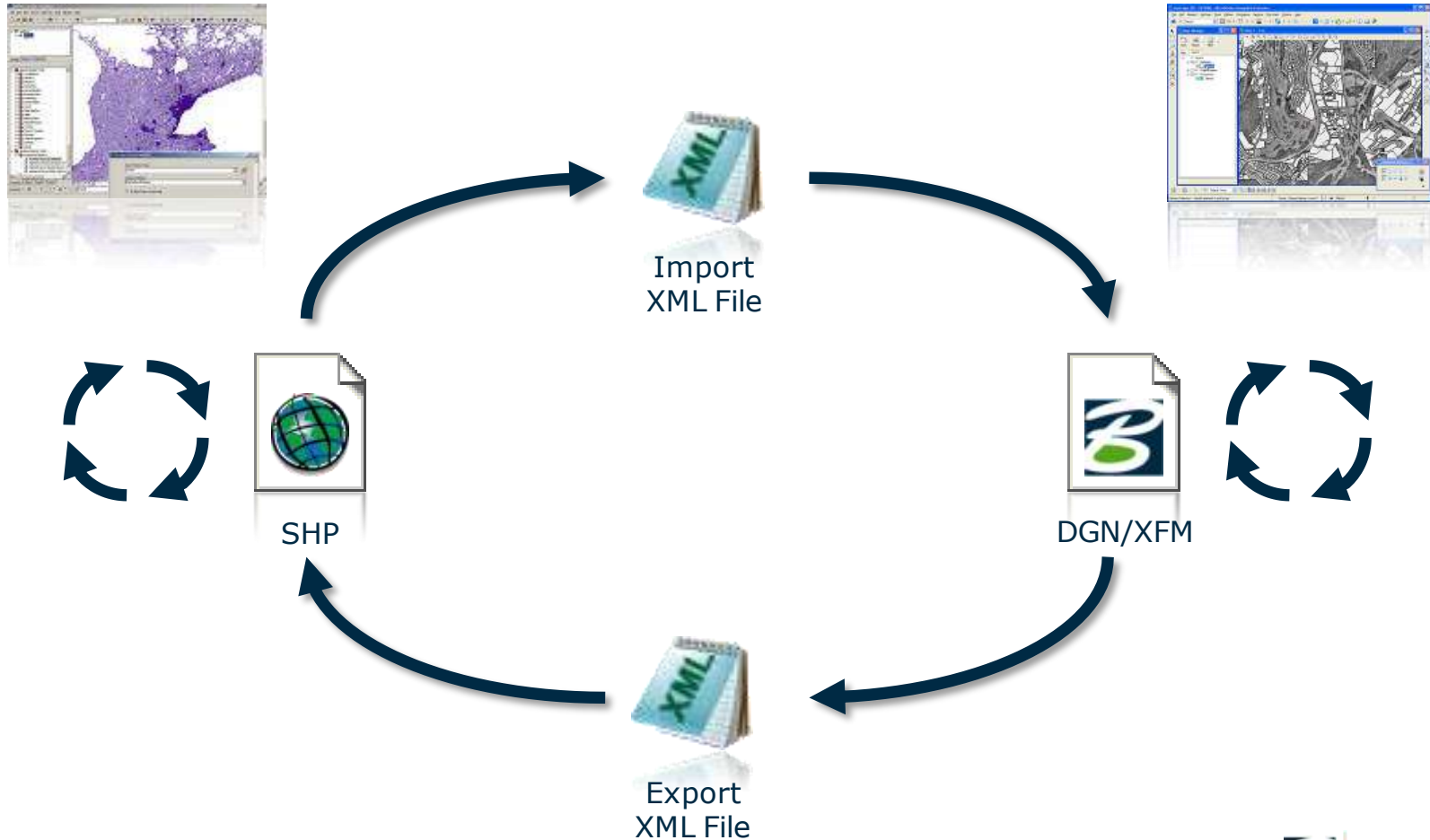
Create Parameters	
File	C:\Documents and Settings
Overwrite	True
Create 2.5D file(s)	False

General	
Name	skel_flader
Geometry Type	Polygon
Where Clause	

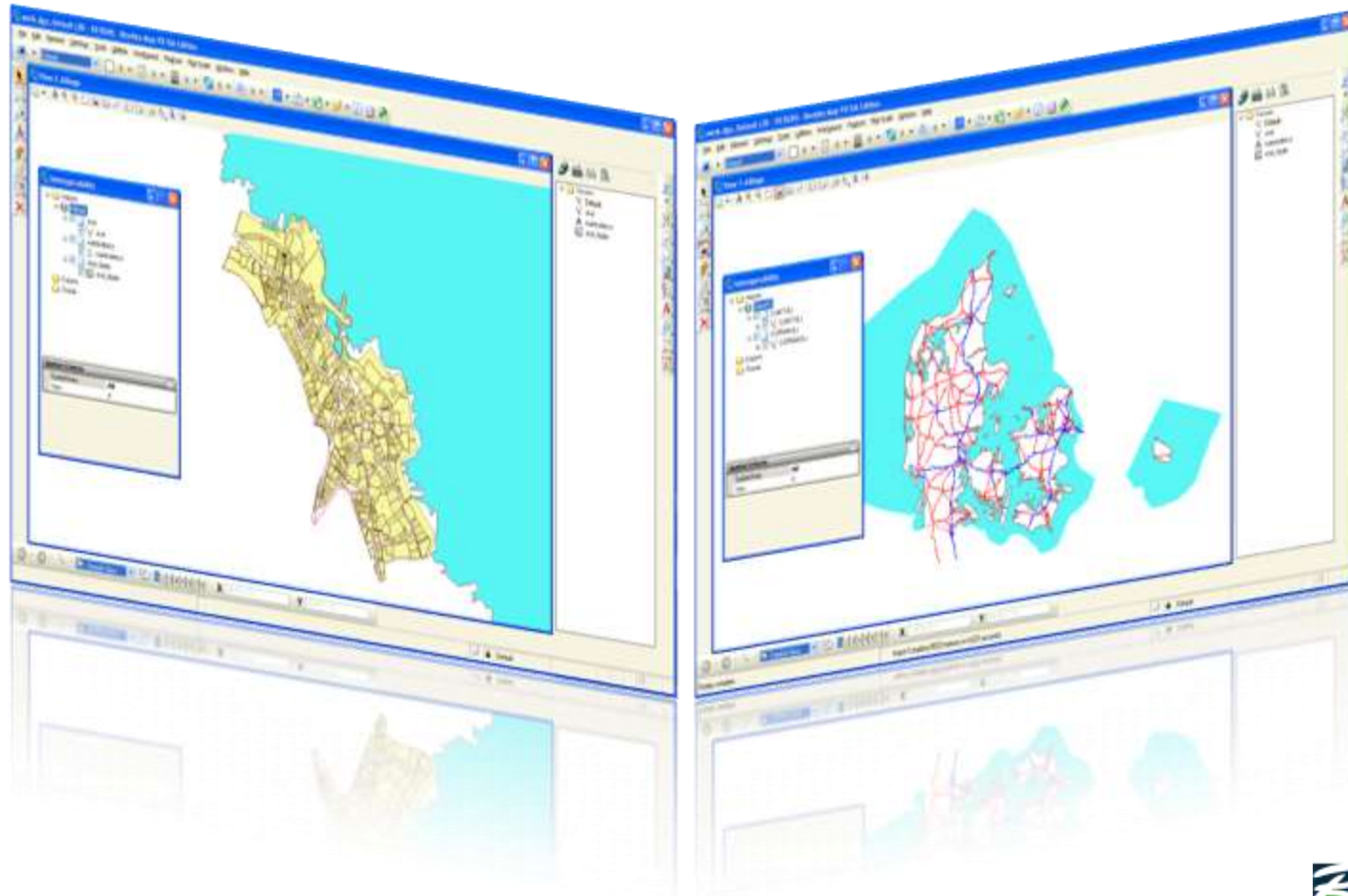
skel_flader	
<input type="checkbox"/>	FID
<input checked="" type="checkbox"/>	Kommunenr
<input checked="" type="checkbox"/>	Landsejerl
<input type="checkbox"/>	Lodidentif
<input checked="" type="checkbox"/>	Matrikelnu
<input checked="" type="checkbox"/>	OBJECTID

General	
Name	OBJECTID
Mapped Name	OBJECTID

Data exchange editing life-cycle



Interoperability... in action



Questions?

question afhøre (fx witnesses), afhøre (fx witnesses), betvivle (fx witnesses), diskussion (fx witnesses), drage i tvivl (fx I do not question his motives), emne (fx I do not question his motives), pinligt forhør (glds), sag (glds), spørge (vb), spørge (vb), spørgsmål (sb), spørgsmål (sb), tortur (sb), tvivl (fx there is some question about his qualifications), tvivl (fx there is some question about his qualifications), udspørge (fx there is some question about his qualifications), undersøge (fx there is some question about his qualifications)