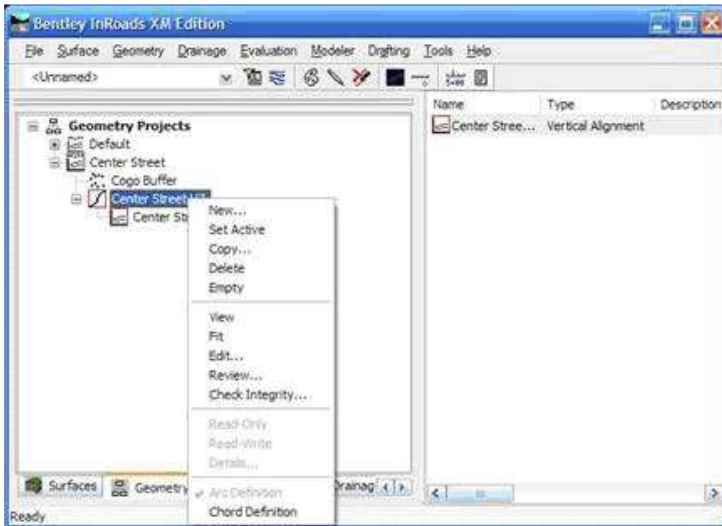


Workspace Bar Shortcuts

InRoads XM makes it quicker and easier for users to access common information via a pop-up menu within the Workspace Bar. This menu provides various shortcuts to commonly used commands and will vary depending on which data category the user has selected. Integrating these shortcuts into a design workflow should help increase user speed and productivity.

Example: Shortcut to editing a horizontal alignment

- 1) Select the Geometry Tab at the bottom of the Workspace Bar.
- 2) Select an opened, defined horizontal alignment and right-click it. You will see the shortcut pop-up menu appear.



- 3) Choose Edit... and the Define Horizontal Curve Set dialogue box will appear.
- 4) From here, you can edit the horizontal alignment as needed.

